

SERIES 1501 AIR SHEET NL 37-1 EDITION 2  
 COMPANION SERIES 1501 SHEET IS EDITION 1

- LEGEND İSARETLER**
- POPULATED PLACES — MESHÜN YERLER**
- Over 100,000 — 100,000 den fazla
  - 50,000 to 100,000 — 50,000 — 100,000
  - 10,000 to 50,000 — 10,000 — 50,000
  - 2,000 to 10,000 — 2,000 — 10,000
  - Less than 2,000 — 2,000 den az
- ROADS — YOLLAR**
- All weather, hard surface — Daimi, sert sahili
  - Two or more lanes wide — İki veya daha fazla şerhiti
  - One lane wide — Tek şerhiti
  - All weather, loose or light surface — Daimi, gevşek sahili
  - Two or more lanes wide — İki veya daha fazla şerhiti
  - One lane wide — Tek şerhiti
  - Fair or dry weather, loose surface — Kuru mevsimde müsait, gevşek sahili
  - Track or trail — Yolu, pathı
- RAILROADS — DEMİRYOLLAR**
- Normal gauge (5') — Tek hat
  - Narrow gauge — Dar hat
- BOUNDARIES — HUDUTLAR**
- International — Devlet
  - Primary administrative — Birinci sınıf idare takatı
  - Secondary administrative — İkinci sınıf idare takatı
  - Reservation — Ayırılmış arazi
- OTHER FEATURES — DİĞERİ SİMA**
- Landmark — Göze Çarpan şekiller
  - Horizontal control point — Üstü kontrol noktası
  - Levee — Toprak sed

**TERRAIN ELEVATIONS — ARAZI YÜKSEKLİKLERİ**

Spot elevation: Normal, Critical  
 Yükseklik: Normal, Kritik

HIGHEST KNOWN elevation is **1066** feet at 47°19'N, 36°35' E

**1066** fit en yukarı yükselir Kuzeyde 47°19' Doğuda 36°35' yerleşmiştir.

**VEGETATION — TENEBBÜT AĞAÇ**  
 Woods/brushwood — Orman ve çalılık

**HYDROGRAPHY — HİDROGRAFI**  
 Swamp or marsh — Bataklık

**Rock: Sunken, Awash**  
 Kayalar: Su altında Su ile beraber

**Wreck: Sunken, Exposed**  
 Eşya: Su altında Su ile dışarıymeyen

**Limnol: Danger, Reef**  
 Sigilik tehlike hududu, sığ kayalık

**Foreshore flat, Salt evaporator**  
 Sahil düzlüğü, tuzla

**Depth curves in feet**  
 Derinlik müşahideleri kulaç olarak verilmiştir

**ASCORBORIC (Military or Civil)**  
 HAVA MEYDANI (Askeri veya sivil)

**FIELD LIMITS, WITH RUNWAY PATTERNS**  
 Alanı hadlar ile uçak pisti numune

**FIELD LIMITS, UNKNOWN, WITH RUNWAY PATTERNS**  
 Alanı hadlar, bilinmeyen, uçak pisti numune

**FIELD LIMITS, UNKNOWN, WITH RUNWAY PATTERNS**  
 Alanı hadlar, bilinmeyen, uçak pisti numune

**FIELD LIMITS, UNKNOWN, WITH RUNWAY PATTERNS**  
 Alanı hadlar, bilinmeyen, uçak pisti numune

**RADIO AIDS TO NAVIGATION**  
 VHF OMNI RANGE (VOR) — VHF OMNI MESAFE İVORU

**VORTAC — VORTAC**

**TACAN — TACAN**

**Other facilities**  
 Diğer kolaylıklar

**CONTROLLED AIRSPACE İDARE EİME HAVA ARALIK**

**ADIZ**

**VISUAL AIDS AND OBSTRUCTIONS**  
 YARDIMLAR GÖRMEGE AID VE ENGELLER

Obstruction Engell  
 1108 — Elevation of obstruction top, above sea level  
 Yüksek engelün üst taraf, yukarı deniz hiza

(259) — Elevation of obstruction top, above ground level  
 Yüksek engelün üst taraf, yukarı zemin hiza

Group obstruction — Grup engel

Radio facility obstruction — Radyo kolaylık engel

Power transmission line — Elektrik enerji hatları

Dune — Mevki geni (Atıldık mevki)

Visual ground sign — Yardımlar zemin işaret

Aero light: Hava fener

**CAUTION**  
**AIR INFORMATION CURRENT THROUGH**  
 29 AUGUST 1975

Consult NOTAMS and Flight Information Publications for the latest air information; the DOD Aeronautical Chart Updating Manual or MOD (U. K.) Aeronautical Chart Amendment document, for other chart revision information.

**MAXIMUM TERRAIN ELEVATIONS**

Maximum Terrain elevation figures, centered in the area bounded by ticked lines of LATITUDE and LONGITUDE are represented in THOUSANDS and HUNDREDS of feet BUT DO NOT INCLUDE ELEVATIONS OF VERTICAL OBSTRUCTION.

EXAMPLE: **51**  
 5100 feet

**NOTES — NOTLAR**

Only obstructions 200 feet or more above ground level are shown. The information on obstructions is not necessarily complete.

**ROAD CLASSIFICATION** should be referred to with caution. Yol işaretli marşrutat etmiş ile hiza etmiş.

On this map a lane is generally considered as being 2.5 meters (8 feet) in width. Bu haritada tek şerhiti bir yol işaretleri 2.5 metredir (8 fit) genişliğinde dir.

Alignment of all boundaries is approximate. Düzün hududların düzime tabiidir.

Names for symbolized populated places are omitted where information is not available or where density of detail does not permit their inclusion. Tüsilin isim çok olduğu yerlerde, işaretlerle gösterilen meshün yerlerin ismi yazılmamıştır.

**CONVERSION OF ELEVATIONS**

FEET	METERS	FEET	METERS
1000	305	10000	3048
900	274	9000	2743
800	244	8000	2438
700	213	7000	2134
600	183	6000	1829
500	152	5000	1524
400	122	4000	1219
300	91	3000	914
200	61	2000	610
100	46	1500	457
100	31	1000	303

**SCALE 1:250,000**  
**ZHDANOV, U.S.S.R.**

SERIES 1501 AIR SHEET NL 37-1 EDITION 2  
 COMPANION SERIES 1501 SHEET IS EDITION 1

Prepared and published by the Defense Mapping Agency Topographic Center, Washington, D.C. 20315. Compiled in 1967. Revised by OMAC AUGUST 1975.

**GRID ZONE DESIGNATION**  
 37T

**UTM GRID ZONE DESIGNATION**  
 37T

**UTM GRID COORDINATE DESIGNATION**  
 37T

**UTM GRID COORDINATE DESIGNATION**  
 37T

**UTM GRID COORDINATE DESIGNATION**  
 37T

**CONTOUR INTERVAL APPROXIMATELY 70 FEET**  
**MÜNHANI ARAĞIĞI TAKRİBEN 70 FIT**

**TRANSVERSE MERCATOR PROJECTION**

**Scale 1:250,000**  
 5 10 15 20 25 30 Statute Miles  
 5 10 15 20 25 30 Kilometers  
 5 10 15 20 25 30 Nautical Miles

**LIMITED DISTRIBUTION** Distribution authorized to Dept. of Defense, except for the 400 series. Release authorized to the public, except for the 400 series. See also the 400 series. See also the 400 series. See also the 400 series.

**RELIABILITY OF THIS GRAPHIC** (as determined by standard practices)

**LOCATION DIAGRAM** (ON INDEX SHOWN IN BLUE) (WAC INDEX SHOWN IN BROWN)

**GEOREF**  
 BASIC 15° QUADRANGLE  
 48° GK  
 42° GJ HC  
 36° 37° 38°

**ELEVATION TINTS**  
 FEET  
 600  
 300  
 0

**GLOSSARY — LÜGATÇE**

Balka.....gully, ravine.....koyak  
 Gora.....mountain.....dağ, dağı  
 More.....sea.....deniz  
 Oblast.....primary administrative division.....birinci sınıf idarî bölge  
 RSFSR.....Russian Soviet Federative Socialist Republic.....Rusya Sosyalist Halklar Sosyalist Cumhuriyeti  
 SSR.....Soviet Socialist Republic.....Sovyet Sosyalist Cumhuriyeti  
 Stantsiya.....station.....istasyon  
 U.S.S.R.....Union of Soviet Socialist Republics.....Birleşik Milletler Sosyalist Cumhuriyetleri Birliği  
 Vozvyshennost'.....hill, plateau, upland.....tepe, yüksel, yer  
 Zalyv.....bay.....körfez

Only obstructions 200 feet or more above ground level are shown. The information on obstructions is not necessarily complete.

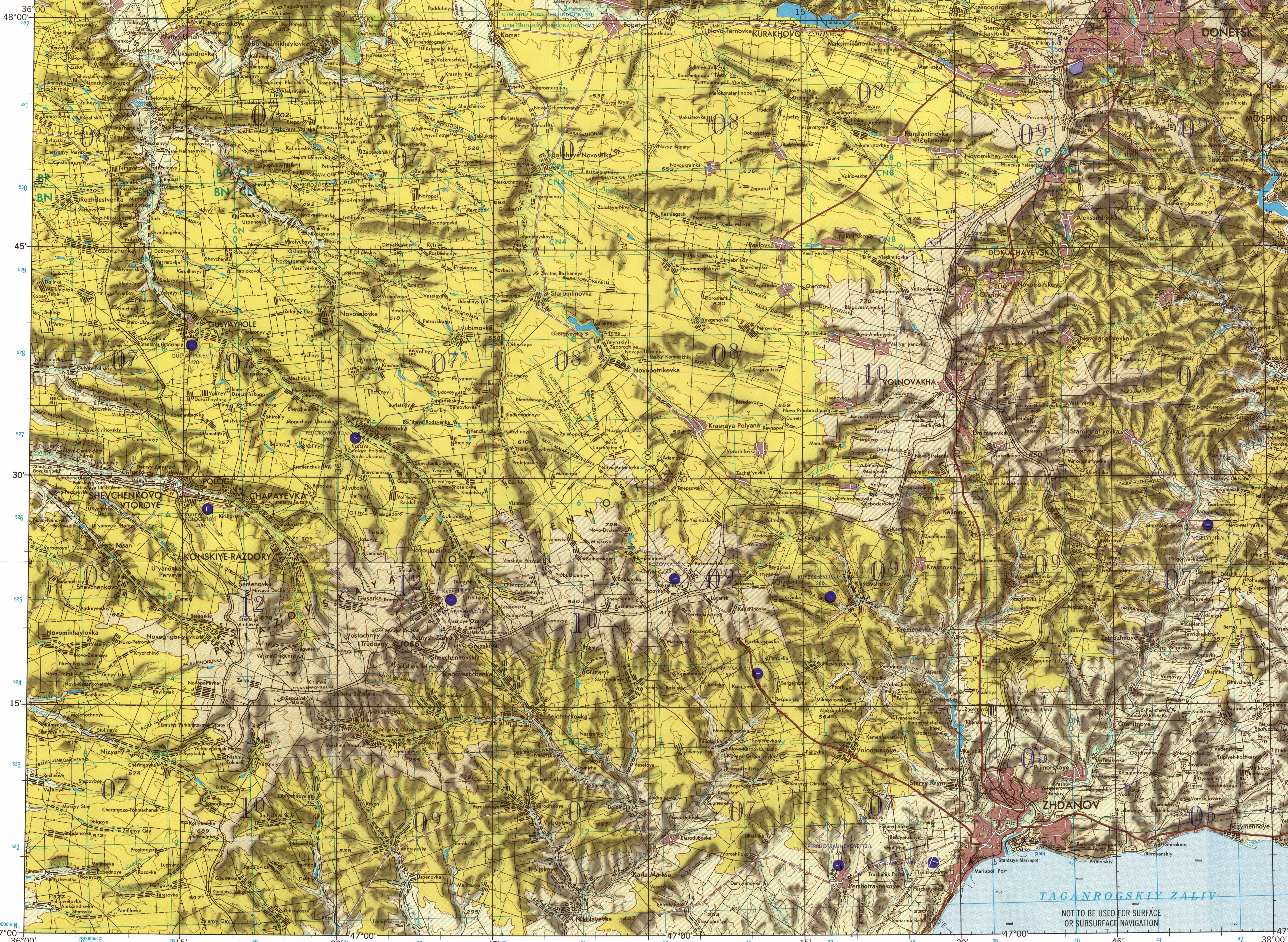
**ROAD CLASSIFICATION** should be referred to with caution. Yol işaretli marşrutat etmiş ile hiza etmiş.

On this map a lane is generally considered as being 2.5 meters (8 feet) in width. Bu haritada tek şerhiti bir yol işaretleri 2.5 metredir (8 fit) genişliğinde dir.

Alignment of all boundaries is approximate. Düzün hududların düzime tabiidir.

Names for symbolized populated places are omitted where information is not available or where density of detail does not permit their inclusion. Tüsilin isim çok olduğu yerlerde, işaretlerle gösterilen meshün yerlerin ismi yazılmamıştır.

NSN 764101410167  
 NMA REF. NO. 1501ANL3701



Only obstructions 200 feet or more above ground level are shown. The information on obstructions is not necessarily complete.

**ROAD CLASSIFICATION** should be referred to with caution. Yol işaretli marşrutat etmiş ile hiza etmiş.

On this map a lane is generally considered as being 2.5 meters (8 feet) in width. Bu haritada tek şerhiti bir yol işaretleri 2.5 metredir (8 fit) genişliğinde dir.

Alignment of all boundaries is approximate. Düzün hududların düzime tabiidir.

Names for symbolized populated places are omitted where information is not available or where density of detail does not permit their inclusion. Tüsilin isim çok olduğu yerlerde, işaretlerle gösterilen meshün yerlerin ismi yazılmamıştır.

NSN 764101410167  
 NMA REF. NO. 1501ANL3701