

SERIES 1501 AIR SHEET NL 35-1 EDITION 2
SERIES 1501 COMPANION SHEET IS EDITION 1

LEGEND LEGGENDA ISARETLER
POPULATED PLACES - LUOGHI ABITATI / MESHKUN YERLER

Over 100,000 BUCURESTI
50,000 to 100,000 SIBIU
10,000 to 50,000 FAGARS
2,000 to 10,000 Domesti
Less than 2,000 Tesla

ROADS - STRADE YOLLAR
Dual highways, Under construction
Autostradă cu spațiu larg în construcție
Super road; Yedigöllerin yolları

All weather, Practicable in all seasons / Dînzat
Hard surface, two or more lanes wide
Con rivestimento duro, due o più carreggiate
Sert asfalt, iki veya daha fazla grida

One or light surface, two or more lanes wide
Con rivestimento leggero o fondo naturale, due o più carreggiate
Geniş asfalt, iki veya daha fazla grida

Hard surface, one lane wide
Con rivestimento duro, o una carreggiata
Sert asfalt, tek grida

One or light surface, one lane wide
Con rivestimento leggero o fondo naturale, o una carreggiata
Geniş asfalt, tek grida

Fair or dry weather, loose surface
Practicabile solo nella buona stagione, o fondo naturale
Kuru havalarda yavaş, gevrek asfalt

Con track, Concrete, Arabe çakıl
Foot path, trail, Sentiero, çakıl Yaya yolu, patika

International Route
Strada internațională
Esternegegenyal Yul

National Road
Strada națională
Devlet Yul

Secondary Road
Strada secundară
Tili Yul

RAILROADS - FERROVIE DEMIRYOLLAR
Normal gauge 1.44m (4'8.5")
A scartamento ordinario 1.44m (4'8.5")
Normal feet 1.41m (4'7")
Narrow gauge
A scartamento ridotto
Dar hat
Aerial Cableway, etc. Teleferico, etc. Hava Demir Hatalı, ve sair

BOUNDARIES - LIMITI HUDUTLAR
International Limit of State / Esterna graniță
Dj Divisione Amministrativa Principale
Sîrniai sîrniță administrativă

TERRAIN ELEVATION - ALTIMETRIA / ABAZI / YÜKSEKLİKLER
HIGHEST KNOWN elevation is 7559 feet at 47°36'N, 24°38'E
La quota massima di cui si ha notizia è di 7559 piedi a 47°36'N, 24°38'E
En YUKARI BELLI 7559 fit yükseklik 47°36'N, 24°38'E

Spot elevation, normal, critical
Puncte cotate, normale, critic
Bakiye yükseklik, normal, kritik
Horizontal control point
Puncte trigonometrice

VEGETATION - VEGETAZIONE / TENEBBÜT
Woods, brushwood, Orchard, Vineyard
Bosch, macischi, Fructe, Vișnegi
Orman, fundaluk, Bahçe-bahçe

DRAINAGE - IDROGRAFIA / DRENAJ
Navigable Canal, Canale navigabile / Strada de Navigație
AERODROMES - AERODROMI / HAVA MEYDANLARI

Field limits with runway pattern
Delimitazione del campo con schema delle piste
Alini marker, de apă și pământ marcat
EDNA/50/s
EDNA - Name Denominazione / İsim
50 - length of longest runway to nearest hundred of feet
Lungimea celei mai lungi piste apropiată de 100 de metri
Lungimea celei mai lungi piste apropiată de 100 de metri
50 - length of longest runway to nearest hundred of feet
Lungimea celei mai lungi piste apropiată de 100 de metri

RADIO AIDS TO NAVIGATION
VHF OMNI RANGE (VOR) VOR with DME
VORTAC Other Facilities
TACAN

CONTROLLED AIRSPACE ATLANTIC ADIZ

VISUAL AIDS AND OBSTRUCTIONS
ASISTENȚE VIZUALE / ESTACADI
YARDIMLAR GÖRMEGE AID VE ENGELLER

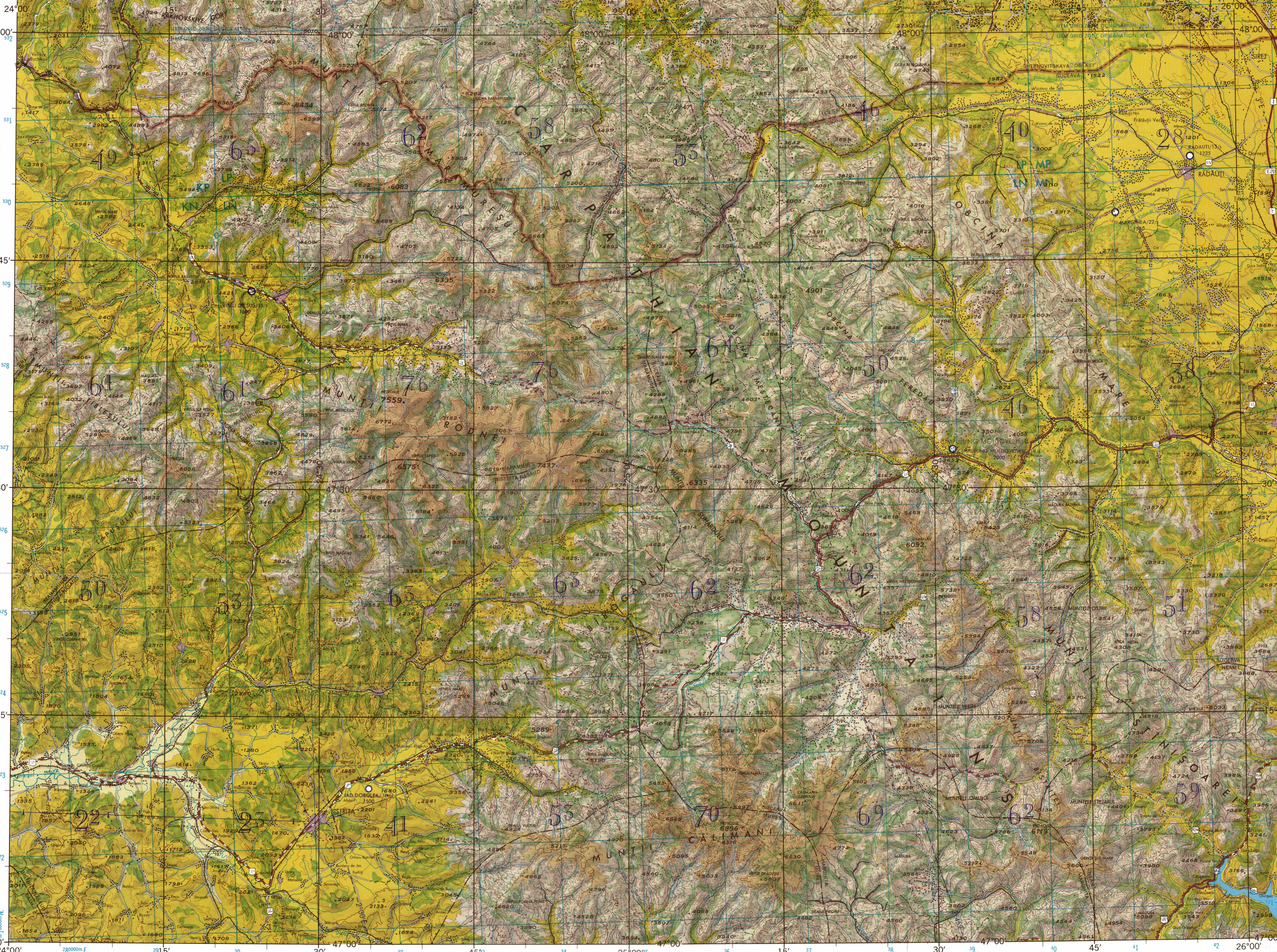
Obstruction / Estacol / Engel
1108 - Elevation of obstruction top above sea level
Cota de la partea de sus a obstacolului față de nivelul mării
Yükseklik engelinin deniz seviyesinden yüksekliği

(259) - Elevation of obstruction top above ground level
Altețea de la partea de sus a obstacolului față de nivelul solului
Yükseklik engelinin yerden yüksekliği

CAUTION
AIR INFORMATION CURRENT THROUGH 22 AUGUST 1975
Consult NOTAMS and Flight Information Publications for the latest air information; the DOD Aeronautical Chart Updating Manual or MOD (U.K.) Aeronautical Chart Amendment Document, for other chart revision information.

LINE OF EQUAL MAGNETIC VARIATION FOR 1975
(Annual rate of change 1° East/yr)
LINEE DE EGAL DECLINAȚIE MAGNETICĂ PENTRU ANUL 1975
(Viteza de schimb anuală de 1° la Est)

NOTES
No obstructions 200 feet or more above ground level are known to exist within this area.
THE REPRESENTATION OF INTERNATIONAL BOUNDARIES IS NOT NECESSARILY AUTHORITATIVE.
THE ALIGNMENT OF ADMINISTRATIVE BOUNDARIES IS APPROXIMATE. A line is generally considered as being a minimum of 2.5 meters (8 1/4) in width.



LIMITED DISTRIBUTION Distribution authorized to DOD, JAN 10/USC 5830 & 456. Release authorized to U.S. DOD contractors, JAN 48/27A, 552,245-7000. Refer other requests to Headquarters, NIMA, ATTN: Release Office, Dept 25, Casey Ave "The Citadel", Charleston, SC 29405. Release of this manual is prohibited.

MAXIMUM TERRAIN ELEVATIONS
Maximum Terrain elevation figures entered in the area bounded by ticked lines of LATITUDE and LONGITUDE are represented in THOUSANDS and HUNDREDS of feet. BUT DO NOT INCLUDE ELEVATIONS OF VERTICAL OBSTRUCTIONS.

EXAMPLE:
5100 feet.....51

SCALE 1:250,000
CÎMPULUNG MOLDOVENESC, ROMANIA; U.S.S.R.
SERIES 1501 AIR SHEET NL 35-1 EDITION 2
SERIES 1501 COMPANION SHEET IS EDITION 1

Prepared and published by the Defense Mapping Agency Aerospace Center, St. Louis Air Force Station, Missouri 63118. Compiled March 1968. Revised by DMAAC August 1975

JOINT OPERATIONS GRAPHIC (AIR)
ELEVATIONS IN FEET QUOTE IN PIEDI / YÜKSEKLİKLER FITDIR
Scale 1:250,000
Scale 1:250,000
Scale 1:250,000
Scale 1:250,000

CONTOUR INTERVAL APPROXIMATELY 330 FEET
L'EGHIDIANȚA E DE PIEDI 330 CÎRCA
MUNHAR ARAKLIGI TARKIRIN 330 FIT

BLUE NUMBERED LINES INDICATE THE 10,000 METER UNIVERSAL TRANSVERSE MERCATOR GRID, ZONE 35, INTERNATIONAL SPHEROID.
LE LINEE CONTRASSEES DE NUMERI IN AZURU INDICANDI IL RETICOLATO U.T.M. DI 10 KM, FUSO 35, ELIPSOIDE INTERNAZIONALE
MAVİ RAKLI HATLAR ENTANSİYONAL SFERİD VE 35. BİLİNE AT 10,000 METRELİK ÜNİVERSAL TRANSVERS MERKATOR GRİDİNİ GÖSTERİR

USERS SHOULD REFER CORRECTIONS, ADDITIONS, AND COMMENTS TO THE NIMA CUSTOMER HELP DESK: 1-800-455-0000 COMMERCIAL: 304-303-1200; OR WRITE TO: ATTN: DOD MAIL STOP P-20, NATIONAL MAPPING AND MAPPING AGENCY, 4000 SANGAMOND ROAD, BETHESDA, MD 20814-0002.

REPRODUCED BY NIMA 12-98
GLOSSARY
Dealul.....gora.....mountain
Muntele.....gora.....mountains
Ocina.....kirebet.....ridge
Vale.....dolina.....valley
Vrfu.....pk.....peak

RELIABILITY OF THIS SHEET (MAP FEATURE) (NOT IN POSITION)
All Features 100%
SOURCE MATERIALS COMPILED FROM BEST AVAILABLE
Horizontal Datum: European Datum
Vertical Datum: Mean Sea Level
Transverse Mercator Projection
NSN 7641014005297
NIMA REF. NO. 1501ANL3501