

SERIES 1501 AIR SHEET NL 34-7 EDITION 8

SERIES 1501 COMPANION SHEET IS EDITION 3

POPULATED PLACES - LUOGHI POPOLATI

Over 100,000	Pop. di 100.000	BEOGRAD
50,000 to 100,000	da 50.000 a 100.000	TITOGRAD
10,000 to 50,000	da 10.000 a 50.000	Tetovo
2,000 to 10,000	da 2.000 a 10.000	Rogatica
Less than 2,000	Meno di 2.000	Dob

ROADS - STRADE

Autostada duale
All weather hard surface
More than two lanes wide
Two lanes wide
One lane wide
All weather loose or light surface
More than two lanes wide
Two lanes wide
One lane wide
Fair or dry weather, loose surface
Superior all-weather aggregate in loose state
Cart track
Footpath, trail
Road marker

RAILROADS - FERROVIE

Normal gauge 1.44m (4'8 1/2")
Standard gauge 1.41m (4'7 1/2")
Station position
Narrow gauge

BOUNDARIES - LIMITI

International
First-order administrative division

OTHER FEATURES - ALTRI CONFIGURAZIONI

School
Ruin
Tank
Submarine

VEGETATION - VEGETAZIONE

Woods
Orchard

RELIEF - RILIEVO

Levee

HYDROGRAPHY - IDROGRAFIA

Swamp
Pantano

TERRAIN ELEVATIONS - ELEVAZIONI DEL TERRENO

Spot elevation
Elevation of point

HIGHEST KNOWN ELEVATION is 1768 feet at the following coordinates:
L'altitudine PIU' ALTA CONOSCIUTA e di 1768 piedi alle coordinate seguenti:
Geographic: 45°09' N, 19°43' E
Grid: 1909 08

AERODROMES (Military or Civil)
Runway pattern known
Field limits and runway pattern unknown

HELIPORT

RADIO FACILITIES
TACAN VOR/DME
RADIO RANGE LF/MF
MULTIPLE RADIO FACILITIES
CONTROLLED AIRSPACE
ADIZ

VISUAL AIDS AND OBSTRUCTIONS
Obstructions
Radio facility obstruction
Power transmission line
Visual ground sign
Aero light

CAUTION
Vertical obstructions, including powerlines, have been indicated on this chart. However, there is no assurance that all are shown, or that their locations or heights are exact.

AVVERTENZA
L'informazione sugli ostacoli verticali, compresa la linea aerea, viene fornita in base ai dati disponibili. Non e' certo che tutti gli ostacoli siano rappresentati o che la loro posizione o altezza siano precise.

CAUTION
AIR INFORMATION CURRENT THROUGH 29 FEBRUARY 1996
Consult NOTAMS and Flight Information Publications for the latest air information; the DOD Aeronautical Chart Updating Manual or MDG 1010 Aeronautical Chart Standardization document, for other chart revision information.

MAGNETIC VARIATION FOR 1995 IS APPROXIMATELY
2°15' EAST OVER THE ENTIRE AREA
(Annual rate of change 3" increase)
VARIAZIONE MAGNETICA PER 1995 E CIRCA 2°15' ALLESTI DAPPERTUTTO L'AREA
(Variazione annuale 3" di aumento)

LOCATION DIAGRAM
(WAC INDEX SHOWN IN RED/BROWN)

WARNING
AIRSPACE OVER BOSNIA-HERZEGOVINA IS A NO FLY ZONE. OVERFLIGHT IS PROHIBITED. VIOLATORS ARE SUBJECT TO INTERCEPTION BY NATO AIRCRAFT. DEVIATIONS SHOULD BE MADE AWAY FROM THE NO FLY ZONE. IF AN EMERGENCY OCCURS OVERFLIGHT CONTACT CALL SIGN MAG 101: 243.0 MHz OR 321.5 MHz FOR COORDINATION.

CONVERSION OF ELEVATIONS

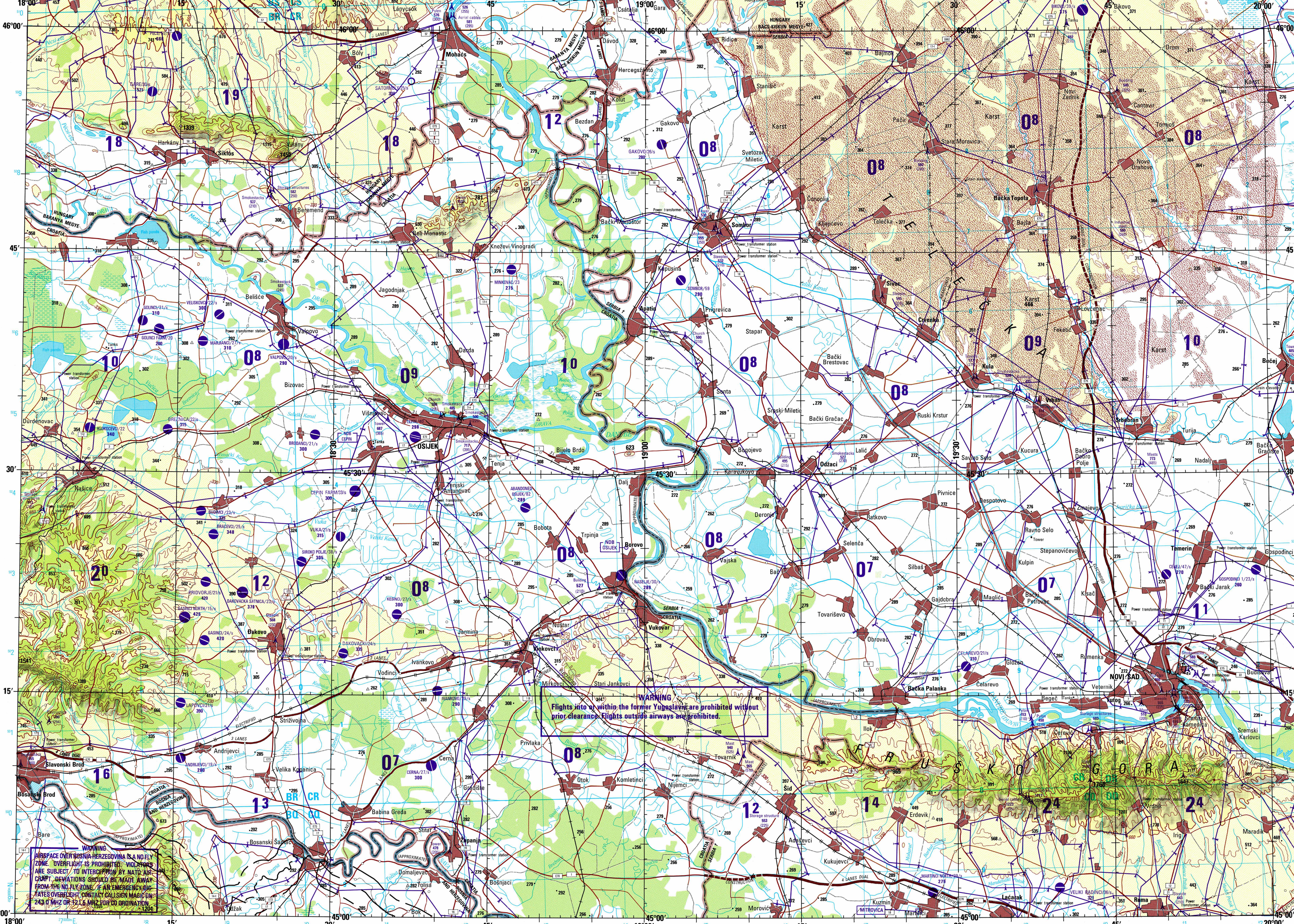
FEET	METERS	FEET	METERS
1000	305	2000	610
2000	610	3000	915
3000	915	4000	1220
4000	1220	5000	1525
5000	1525	6000	1830
6000	1830	7000	2135
7000	2135	8000	2440
8000	2440	9000	2745
9000	2745	10000	3050

LIMITED DISTRIBUTION
Distribuzione limitata a: DA, DM, 16 U.S.C. 1510a & 1796
Rilascio autorizzato da: DA, DM, 16 U.S.C. 1510a & 1796
7900. Release authorized to: DA, DM, 16 U.S.C. 1510a & 1796. Release authorized to: DA, DM, 16 U.S.C. 1510a & 1796. Release authorized to: DA, DM, 16 U.S.C. 1510a & 1796. Release authorized to: DA, DM, 16 U.S.C. 1510a & 1796.

SCALE 1:250,000
NOVI SAD, SERBIA; BOSNIA AND HERZEGOVINA; CROATIA; HUNGARY

SERIES 1501 AIR SHEET NL 34-7 EDITION 8

SERIES 1501 COMPANION SHEET IS EDITION 3



JOINT OPERATIONS GRAPHIC (AIR)

SCALE 1:250,000

ELEVATIONS IN FEET / ELEVAZIONI IN PIEDI

ELEVATIONS IN FEET / ELEVAZIONI IN PIEDI

GEOREF BASIC 15° QUADRANGLE PK

RELIABILITY OF THIS GRAPHIC
As determined by standard practices
PLOTING ACCURACY 90% ASSURANCE
Horizontal: within 814 ft.
Contours: within 85 ft.
Date of information: 1993

NOTES - NOTIZIE
Powerlines are shown except within populated place limits. Other obstructions are shown if they are 200 feet or more above ground level. See caution note.
A line indicating terrain features is shown as a dashed line with a 200-foot step interval.
BOUNDARY REPRESENTATION IS NOT NECESSARILY AUTHENTICATIVE. Names and boundaries of administrative divisions in Bosnia and Herzegovina, Croatia, and Serbia are not available.
Non e' fornito il limite delle divisioni amministrative in Bosnia e Herzegovina, Croazia, e Serbia non sono disponibili.
A linea e' generalmente considerata di avere come minimo 6 piedi (2,50 metri) di larghezza.

ATTENTION
THIS CHART CONTAINS MAXIMUM ELEVATION FIGURES (MEF)
The Maximum Elevation Figures shown in quadrangles bounded by ticked lines of latitude and longitude are represented in THOUSANDS and HUNDREDS of feet above mean sea level. The MEF is based on information available concerning the highest known features in each quadrangle, including terrain and obstructions (trees, towers, antennas, etc.).

EXAMPLE: 12500 feet / 3810 meters

CONTOUR INTERVAL APPROXIMATELY 165 FEET / L'EQUIDISTANZA FRA LE CURVE DI LIVELLO E' DI CIRCA 165 PIEDI

GLOSSARY / GLOSSARIO

Ank	river	stream
Bar	marsh	marsh
Bo	mountain	mountain
Br	road	road
Bu	division administrative	division administrative
Ca	ca	ca
Ch	church	church
Co	contour	contour
Cs	contour interval	contour interval
Cu	contour interval	contour interval
D	dam	dam
Di	division administrative	division administrative
Dr	road	road
Du	division administrative	division administrative
E	elevation	elevation
F	farm	farm
G	ground	ground
H	height	height
I	island	island
J	junction	junction
K	key	key
L	lake	lake
M	marsh	marsh
N	natural	natural
O	obstruction	obstruction
P	power	power
Q	quadrangle	quadrangle
R	road	road
S	station	station
T	town	town
U	unit	unit
V	village	village
W	water	water
X	crossing	crossing
Y	yard	yard
Z	zone	zone

USERS SHOULD REFER TO THE USER'S MANUAL FOR ADDITIONAL INFORMATION AND COMMENTS TO THE USER'S MANUAL. FOR MORE INFORMATION, CONTACT THE NATIONAL AERONAUTICS AND SPACE ADMINISTRATION, 4800 SANDHURST ROAD, BETHESDA, MD 20815-5003.

© COPYRIGHT 1996 BY THE UNITED STATES GOVERNMENT. NO COPYRIGHT CLAIMED UNDER TITLE 17 U.S.C.