

SERIES 1501 AIR SHEET NL 33-12 EDITION 10

POPULATED PLACES — LUOGHI POPOLATI

Over 100,000 Più di 100.000  
 50,000 to 100,000 da 50.000 a 100.000  
 10,000 to 50,000 da 10.000 a 50.000  
 2,000 to 10,000 da 2.000 a 10.000  
 Less than 2,000 Meno di 2.000

ROADS — STRADE

4 LANES DUAL AUTOSTRADA DUALE A 4 CORSE  
 4 CORSE  
 All weather, hard surface Superficie dura, tutto l'anno  
 More than two lanes wide Più larga di due corsie  
 Two lanes wide A due corsie  
 One lane wide Una corsia  
 All weather, loose or light surface Superficie agiuvata, tutto l'anno  
 More than two lanes wide Più larga di due corsie  
 Two lanes wide A due corsie  
 One lane wide Una corsia  
 Fair or dry weather, loose surface Superficie agiuvata, tempo secco  
 Car track Strada non carrozzabile  
 Route marker Segnale di via  
 International Internazionale  
 National Nazionale  
 Secondary Secondaria

RAILROADS — FERROVIE

Normal gauge 4'8 1/2" (1.44m) Scartamento normale 4'8 1/2" (1.44m)  
 Station position Località della stazione  
 Narrow gauge Scartamento ridotto

BOUNDARIES — LIMITI

International Internazionale  
 Inter-entire Zone of Separation  
 Inter-entire Boundary Line  
 First-order administrative division Divisione amministrativa di prima classe

OTHER FEATURES — ALTRI CONFIGURAZIONI

Mine: Active, Abandoned Miniera: Attiva, Abbandonata  
 Dam Diga  
 Tunnel Galleria  
 Land subject to inundation Terreno soggetto all'inondazione  
 Distorted surface Superficie deformata

VEGETATION — VEGETAZIONE

Woods; Scattered trees Bosco; Alberi dispersi  
 Orchard Frutteto

TERRAIN ELEVATIONS — ELEVAZIONI DEL TERRENO

Spot elevation: normal, critical  
 Elevation del posto: normale, critica  
 HIGHEST KNOWN elevation is 6353 feet at the following coordinates:  
 L'elevazione PIÙ ALTA CONOSCIUTA è di 6353 piedi alle coordinate seguenti:  
 Geographic Coordinates: 44°17'N, 17°38'E  
 Grid della Quadretatura: YK1007

AERODROMES (Military or Civil)

EDNA/500/725  
 Runway pattern known  
 EDNA-Name  
 50-Length of the longest runway to nearest hundreds of feet  
 s-Soft or unimproved surface  
 u-Unimproved surface  
 725-Character  
 Runway pattern unknown

HELIPORT/HELIPAD

RADIO FACILITIES

VHF OMNI RANGE (VOR) VOR WITH DME  
 VORTAC Other Facilities  
 TACAN

CONTROLLED AIRSPACE

ADIZ CONUS ADIZ

VISUAL AIDS AND OBSTRUCTIONS

Obstruction 1108 (259)  
 1108: Elevation of obstruction top, above sea level  
 (259): Elevation of obstruction top, above ground level  
 Group obstruction  
 Radio facility obstruction  
 Power transmission line <150 >150  
 High tension power line with aerial cable >150  
 Visual ground sign  
 Aero light; Marine light

CAUTION

Vertical obstructions, including powerlines, have been extracted from the most reliable sources available. However, there is no assurance that all are shown, or that their locations or heights are exact.

CAUTION

AIR INFORMATION CURRENT THROUGH

Consult NOTAMS and Flight Information Publications for the latest air information. For the 1000 Aeromedical Chart Updating Manual or MDD (U.K.) Aeromedical Chart Amendment document, for other chart revision information.

MAGNETIC VARIATION FOR 1995 IS APPROXIMATELY 1°45' EAST OVER THE ENTIRE AREA (Annual rate of change 3" increase)  
 LA VARIAZIONE MAGNETICA PER 1995 SARÀ DI CIRCA 1°45' EST SU TUTTA LA ZONA (Variazione annuale aumenti di 3")

ATTENTION

THIS CHART CONTAINS MAXIMUM ELEVATION FIGURES (MEF)

The Maximum Elevation Figures shown in quadrangles bounded by solid lines of red-brown and included are represented in THOUSANDS and HUNDREDS of feet above mean sea level. The MEF is based on information available concerning the highest known features in each quadrangle, including terrain and obstructions (trees, towers, antennas, etc.)  
 EXAMPLE: 12,500 feet 125

LOCATION DIAGRAM

(NIC INDEX SHOWN IN BLUE)  
 (WAC INDEX SHOWN IN RED-BROWN)

SCALE 1:250,000

BANJA LUKA, BOSNIA AND HERZEGOVINA; CROATIA

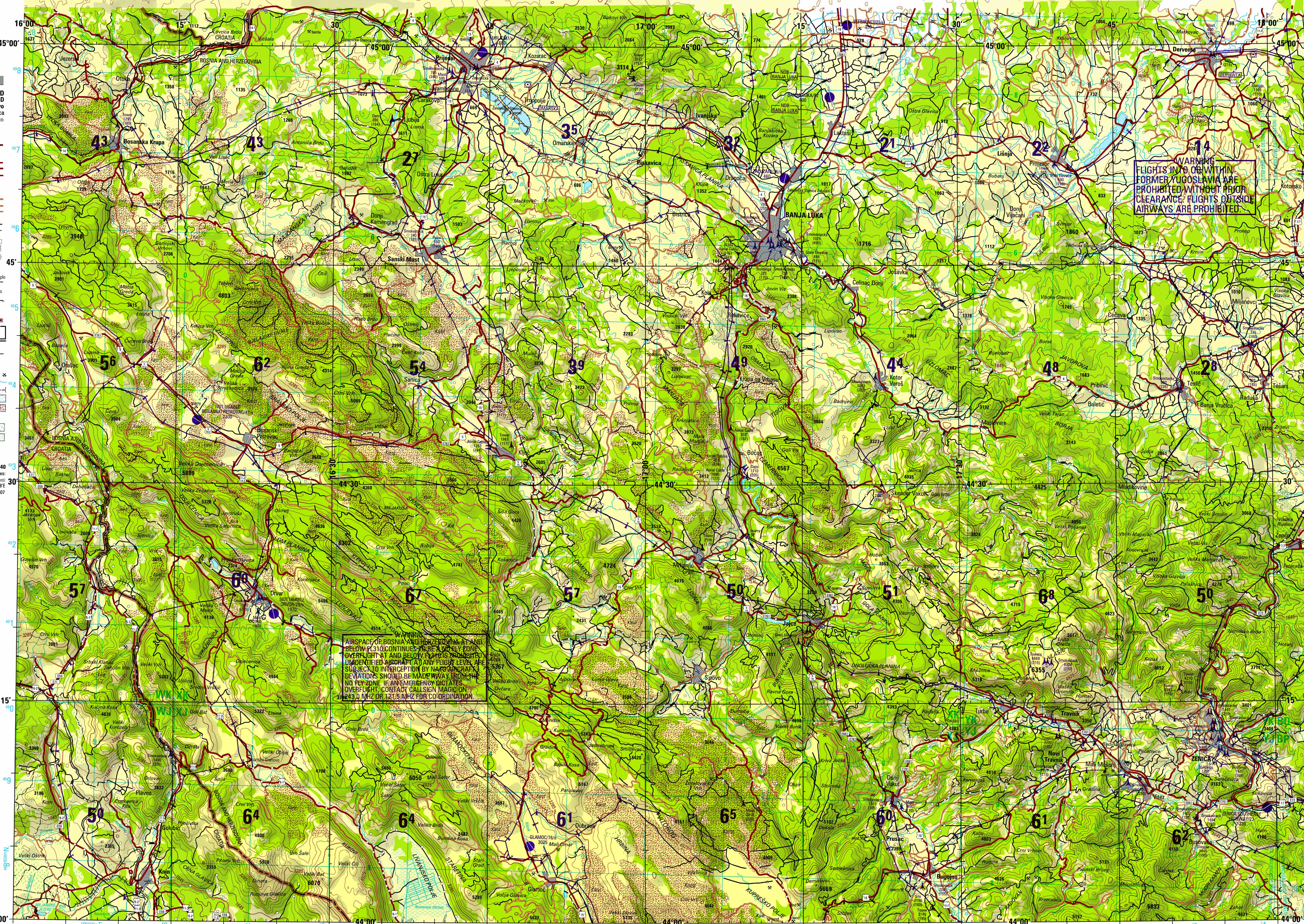
SERIES 1501 AIR SHEET NL 33-12 EDITION 10

CONVERSION OF ELEVATIONS

FEET	METERS	FEET	METERS
1000	305	1000	305
2000	610	2000	610
3000	915	3000	915
4000	1220	4000	1220
5000	1525	5000	1525
6000	1830	6000	1830
7000	2135	7000	2135
8000	2440	8000	2440
9000	2745	9000	2745
10000	3050	10000	3050
11000	3355	11000	3355
12000	3660	12000	3660
13000	3965	13000	3965
14000	4270	14000	4270
15000	4575	15000	4575
16000	4880	16000	4880
17000	5185	17000	5185
18000	5490	18000	5490
19000	5795	19000	5795
20000	6100	20000	6100
21000	6405	21000	6405
22000	6710	22000	6710
23000	7015	23000	7015
24000	7320	24000	7320
25000	7625	25000	7625
26000	7930	26000	7930
27000	8235	27000	8235
28000	8540	28000	8540
29000	8845	29000	8845
30000	9150	30000	9150

MAP INFORMATION AS OF 1994

Prepared and published by the National Imagery and Mapping Agency  
 Compiled February 2000



WARNING

AIRSPACE OF BOSNIA AND HERZEGOVINA AT AND BELOW FL310 CONTINUES TO BE A NO-FLY ZONE OVERFLIGHT AT AND BELOW FL310 IS PROHIBITED UNLESS AUTHORIZED BY THE BOSNIA AND HERZEGOVINA AIR FORCE. DEVIATIONS SHOULD BE MADE PRIOR TO ANY NO-FLY ZONE. IF AN EMERGENCY DICTATES OVERFLIGHT, CONTACT CALL SIGN MAGIC ON 124.0 MHz OR 121.3 MHz FOR CO-ORDINATION

WARNING

FLIGHTS INTO OR WITHIN FORMER YUGOSLAVIA ARE PROHIBITED WITHOUT PRIOR CLEARANCE. FLIGHTS OUTSIDE AIRWAYS ARE PROHIBITED

JOINT OPERATIONS GRAPHIC (AIR)

SCALE 1:250,000

0 5 10 15 Statute Miles  
 0 5 10 15 Nautical Miles

CONTOUR INTERVAL APPROXIMATELY 330 FEET  
 L'EQUIDISTANZA È DI PIEDI 330 CIRCA

BLUE NUMBERED LINES INDICATE THE 10,000 METER UNIVERSAL TRANSVERSE MERCATOR GRID ZONE 33, WHICH IS A 100,000 METER GRID SYSTEM 18A UTM COORDINATE SYSTEM. THE LINES CONTRASSEGNALE DA NUMERI IN AZZURRO INDICANO LA QUADRETTA UTM CON LE COORDINATE DI QUANTITÀ 18A UTM. IL SUO SOSTRUMENTO È UN SISTEMA COORDINATO A 100.000 METER.

USERS SHOULD REFER CORRECTIONS, ADDITIONS, AND COMMENTS TO THE NEA OPERATIONAL HELP DESK: 1-800-455-8899; COMMERCIAL: 314-263-4884; DSN 680-4864 OR WRITE TO: DIRECTOR, NATIONAL GEOSPATIAL INTELLIGENCE AGENCY, ATTN: ES, MAIN STOP 46, 4808 SANGARE ROAD, BETHESDA, MD 20816-9000.

© COPYRIGHT 2000 BY THE UNITED STATES GOVERNMENT  
 NO COPYRIGHT CLAIMED UNDER TITLE 17 U.S.C.  
 © IL GOVERNO DEGLI STATI UNITI 2000  
 NON SI RIVENDICANO DIRITTI D'AUTORE SOTTO IL TITOLO 17 U.S.C. (CODICE DEGLI STATI UNITI)

GLOSSARY

Bosnian	English	Croatian
Brida	picco, collina, montagna	peak, hill, mountain
Brjag	collina	hill
Gleba	montagna	mountain
Gleba	picco, collina, montagna	peak, hill, mountain
Gavica	montagna	mountain
Gavica	montagna, cresta, creste	mountain, ridge, ridges
Gradina	collina	hill
Greda	picco, montagna, cresta, creste	peak, mountain, ridge, ridges
Gornja	montagna	mountain
Jenero	lago	lake
Kar	montagna	mountain
Klanac	valico	pass
Kosa	picco, collina, montagna	mountain, ridge, ridges
Planina	collina, montagna, montagna	hill, mountain, mountains
Plat	plana, planura	plain, plains
Polak	montagna, cresta, creste	mountain, ridge, ridges
Ravan	cresta, creste	ridge, ridges
Reka	corrente	stream
Ribnjak	peschiere	fishponds
Rijeka	corrente	stream
Ukva	vall	valley
Vid	picco, collina, montagna	peak, hill, mountain
Vrh	picco, montagna	peak, mountain
Vrhovi	picco, picco	peak, peaks
Vrhuc	picco, montagna	peak, mountain
Zelenka stanica	stazione ferroviaria	railroad station

GLOSSARIO

Bosnio	Inglese	Croato
Brida	picco, collina, montagna	peak, hill, mountain
Brjag	collina	hill
Gleba	montagna	mountain
Gleba	picco, collina, montagna	peak, hill, mountain
Gavica	montagna	mountain
Gavica	montagna, cresta, creste	mountain, ridge, ridges
Gradina	collina	hill
Greda	picco, montagna, cresta, creste	peak, mountain, ridge, ridges
Gornja	montagna	mountain
Jenero	lago	lake
Kar	montagna	mountain
Klanac	valico	pass
Kosa	picco, collina, montagna	mountain, ridge, ridges
Planina	collina, montagna, montagna	hill, mountain, mountains
Plat	plana, planura	plain, plains
Polak	montagna, cresta, creste	mountain, ridge, ridges
Ravan	cresta, creste	ridge, ridges
Reka	corrente	stream
Ribnjak	peschiere	fishponds
Rijeka	corrente	stream
Ukva	vall	valley
Vid	picco, collina, montagna	peak, hill, mountain
Vrh	picco, montagna	peak, mountain
Vrhovi	picco, picco	peak, peaks
Vrhuc	picco, montagna	peak, mountain
Zelenka stanica	stazione ferroviaria	railroad station

Printed by NIMA 10-00  
 Reprinted by NSA 05-04

BASIC 15° QUADRANGLE  
 GEOREF  
 PJ

RELIABILITY OF THIS GRAPHIC  
 (as determined by standard practices)

GRAPHIC FEATURE	DATE OF INFORMATION
Contours	within 425 ft.
Contours	within 165 ft.
Contours	within 165 ft.
Other features	1999
Other features	1993-94

BOUNDARY REPRESENTATION IS NOT NECESSARILY AUTHENTICATIVE.  
 LA RAPPRESENTAZIONE DEI LIMITI NON È NECESSARIAMENTE AUTOREVOLTA.

ATTENTION: IF LINES ELECTRIC INDICATED WITH THE VERTICAL OBSTRUCTION SYMBOL, RANGE FROM 577 TO 1880 FEET IN HEIGHT ABOVE SEA LEVEL OR FROM 151 TO 371 FEET IN HEIGHT ABOVE GROUND LEVEL FOR THE ENTIRE SHEET.

Vertical Datum: World Geodetic System 1984  
 Horizontal Datum: Mean Sea Level  
 Transverse Mercator Projection

NOTES — NOTAR

Powerlines are shown except within populated place limits. Other obstructions are shown if they are 150 feet or more above ground level. See caution note. Sono rappresentate tutte le linee elettriche esclusa quella all'interno dei centri abitati. Gli altri ostacoli sono rappresentati solo se la loro altezza supera i 150 piedi sul livello del suolo. Vedere l'avvertenza.

On this graphic a lane is generally considered as being 8 feet (2.5 meters) in width. Su questo grafico una corsia è generalmente considerata essere a 8 piedi (2,5 metri) di larghezza.

BOUNDARY REPRESENTATION IS NOT NECESSARILY AUTHENTICATIVE. LA RAPPRESENTAZIONE DEI LIMITI NON È NECESSARIAMENTE AUTOREVOLTA.

ATTENTION: IF LINES ELECTRIC INDICATED WITH THE VERTICAL OBSTRUCTION SYMBOL, RANGE FROM 577 TO 1880 FEET IN HEIGHT ABOVE SEA LEVEL OR FROM 151 TO 371 FEET IN HEIGHT ABOVE GROUND LEVEL FOR THE ENTIRE SHEET.

Vertical Datum: World Geodetic System 1984  
 Horizontal Datum: Mean Sea Level  
 Transverse Mercator Projection

NSN 7641014106516  
 NSA Ref No 1501ANL3312