

SERIES 1501 AIR SHEET NK 43-1 EDITION 1
SERIES 1501 COMPANION SHEET IS EDITION 1



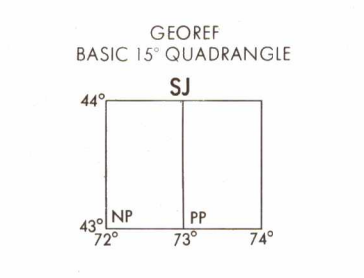
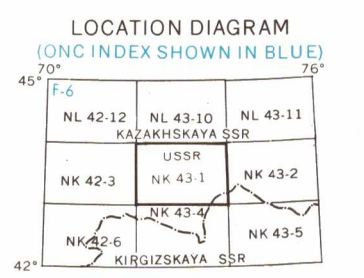
RELIABILITY OF THIS SHEET (as determined by standard practices)

MAP FEATURE	Date of information
All Features	1969

COMPILED FROM BEST AVAILABLE SOURCE MATERIALS

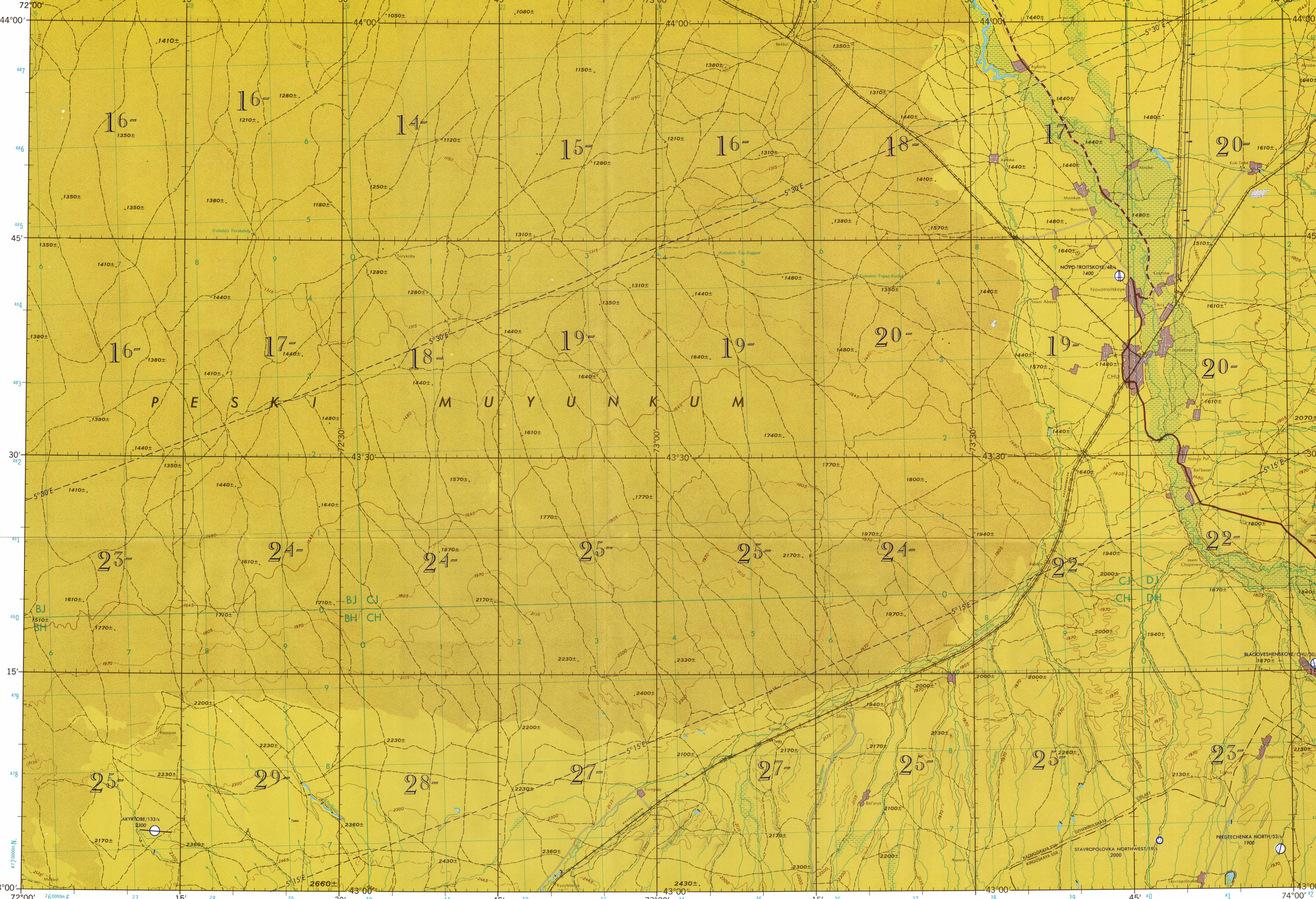
Horizontal Datum: WGS 66
Vertical Datum: Mean Sea Level
Transverse Mercator Projection

GLOSSARY
Kolodets well
Peski desert



CAUTION
AIR INFORMATION CURRENT THROUGH 2 DECEMBER 1969
Consult Notices to Airmen (NOTAMS) and Flight Information Publications (FIPs) for the latest air information. Use Chart Updating Manual (CHUM) for other chart revision information.

LINE OF EQUAL MAGNETIC VARIATION FOR 1965
(Annual rate of change 3' decrease)



Prepared under the direction of the Department of Defense and published by the Aeronautical Chart and Information Center, U.S. Air Force, St. Louis, Missouri, 63118. Compiled March 1969 from best available source.



SCALE 1:250,000
CHU, U.S.S.R.

SERIES 1501 AIR SHEET NK 43-1 EDITION 1
SERIES 1501 COMPANION SHEET IS EDITION 1

HYDROGRAPHY

Seawalls, piers
Depth curve
Reef, limit of danger
Rocks, Sunken, Awash

VEGETATION
Woods - brushwoods

ROADS
All weather hard surface
Two or more lanes wide
One lane wide
All weather loose or light surface
Two or more lanes wide
One lane wide
Fair or dry weather loose surface
Track or rail

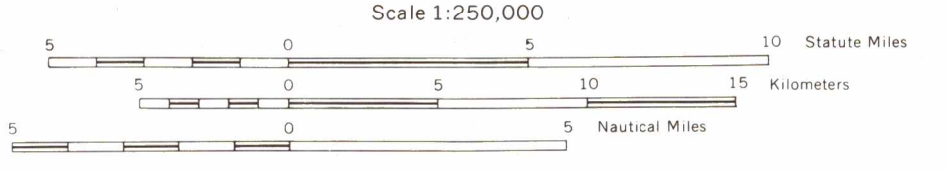
RAILROADS
Normal gauge 1.523m (5'0")
Narrow gauge

BOUNDARIES
International
Primary administrative
Secondary administrative

GLACIERS
Inundated land
Swamp or marsh
Intermittent stream
Well, Spring
Perennial lake
Navigable canal
Salt pan
Falls
Rapids
Glacier, Glacial Moraine

None shown

JOINT OPERATIONS GRAPHIC (AIR)



CONTOUR INTERVAL APPROXIMATELY 330 FEET (100 METERS)
WITH SUPPLEMENTARY CONTOURS AT APPROXIMATELY 165 FEET (50 METERS)

BLUE NUMBERED LINES INDICATE THE 10,000 METER UNIVERSAL TRANSVERSE MERCATOR GRID, ZONE 43, INTERNATIONAL SPHEROID

USERS SHOULD REFER CORRECTIONS, ADDITIONS, AND COMMENTS TO THE NIMA CUSTOMER HELP DESK: 1-800-455-3889; COMMERCIAL: 314-280-5522; OR WRITE TO: DIRECTOR, NATIONAL CHART AND MAPING AGENCY, ATTN: CDD, MAIL STOP P-31, 4600 SANDHURST ROAD, BETHESDA, MD 20814-5002

AERODROMES (Military or Civil)
Field limits with runway pattern
EDNA - Name
50 - length of longest runway to nearest hundreds of feet
S - Soft or unimproved surface
W - Unknown surface
725 - Elevation
Field limits, with runway pattern unknown
Field limits unknown, with runway pattern
Field limits and runway pattern unknown

SEAPLANE BASE
SEAPLANE (EMERGENCY)

HELIPORT

RADIO FACILITIES
RADIO RANGE U/M
MULTIPLE RADIO FACILITIES

EDNA/50's
725

RUNWAYS
RUNG
RUNW
PARIS

CONTROLLED AIRSPACE
ADIZ
ATLANTIC ADIZ

VISUAL AIDS AND OBSTRUCTIONS
Obstruction
1108 - Elevation of obstruction top, above sea level.
(299) - Elevation of obstruction top, above ground level.
Group obstruction
Radio facility obstruction
Power transmission line

TERRAIN ELEVATIONS
HIGHEST KNOWN elevation is **2660±** feet at 43°00'N, 72°28'E
Spot elevation Normal, Critical
768
1549
Horizontal control point
±: following elevation value indicates accuracy is not within 100 feet.

Maximum Terrain elevation figures centered in the area bounded by ticked lines of LATITUDE and LONGITUDE, are represented in THOUSANDS and HUNDREDS of feet, BUT DO NOT INCLUDE ELEVATIONS OF VERTICAL OBSTRUCTION. MAXIMUM TERRAIN ELEVATION FIGURES ARE OMITTED IN UNSURVEYED AREAS AND AREAS WHERE RELIEF INFORMATION IS INADEQUATE.



NOTES:
No obstructions 500 feet or more above ground level are known to exist in this area.
CAUTION: Power transmission line information on this sheet is incomplete. ALIGNMENT OF ALL BOUNDARIES IS APPROXIMATE.
Road classification should be referred to with caution.
On this graphic a lone is generally considered as being 2.5 meters (8 feet) in width.

Printed by NIMA 6-00

NSN 7641014756702
ED. NO. 001
NIMA REF. NO. 1501ANK4301