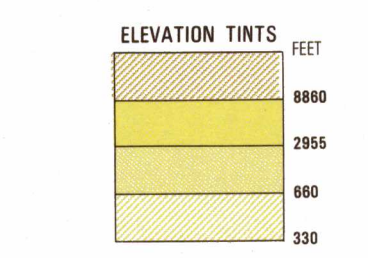
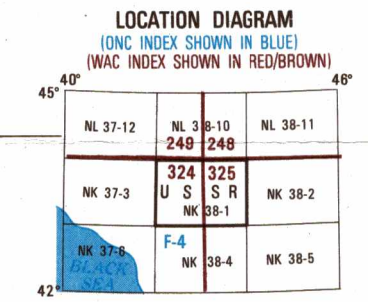


SERIES 1501 AIR SHEET NK 38-1 EDITION 2

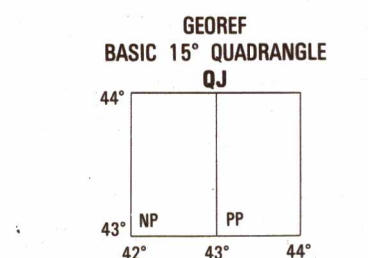


RELIABILITY OF THIS GRAPHIC: Completed from best available source materials.

GLOSSARY-LUGATÇE: A table listing geographical features in English and their corresponding symbols in Turkish.



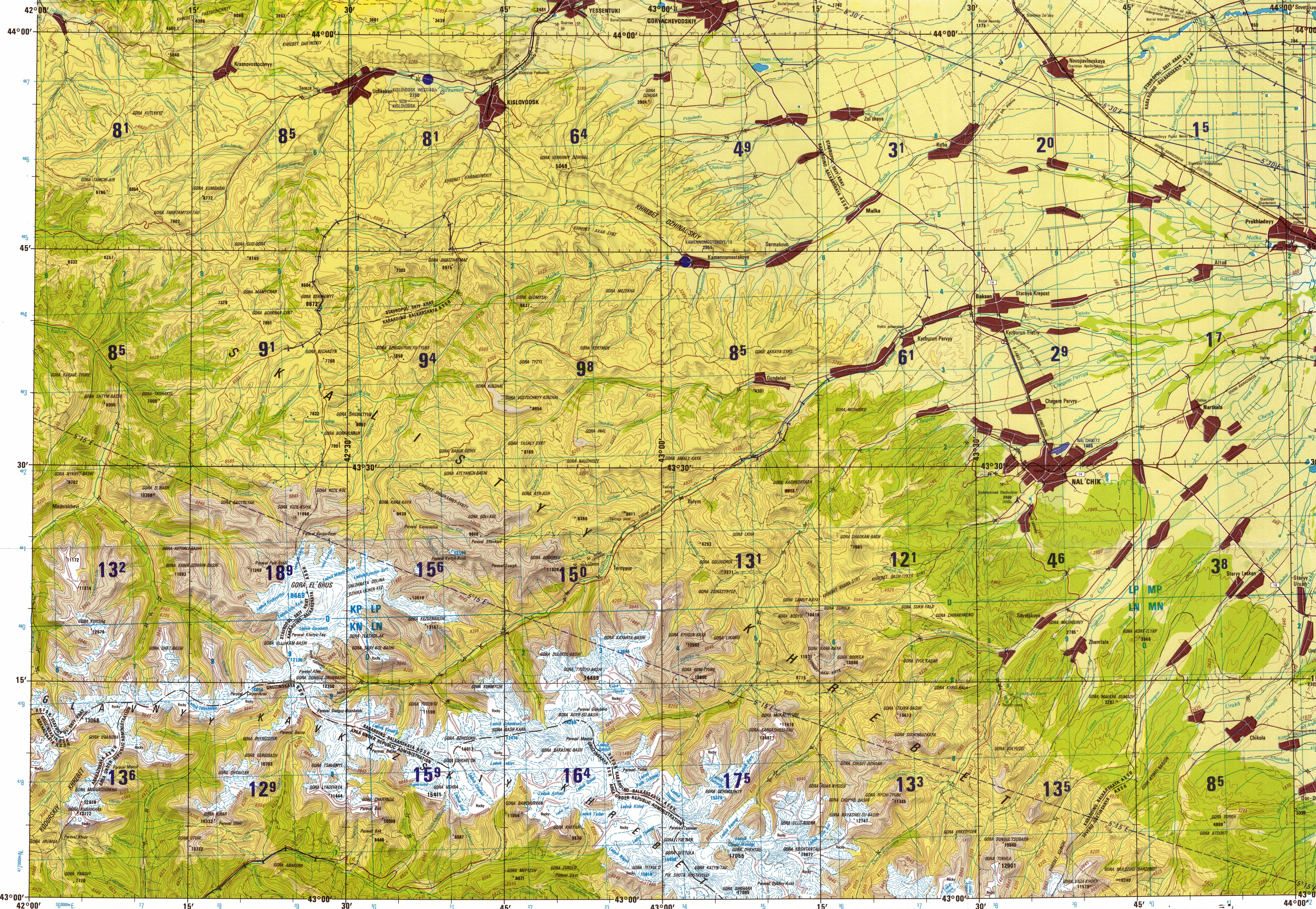
CONVERSION OF ELEVATIONS: A table for converting between feet and meters.



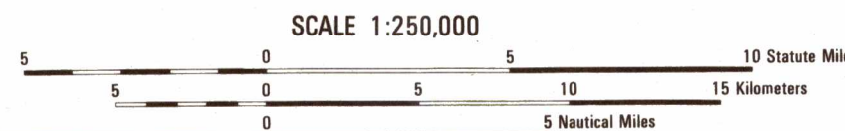
AIR INFORMATION CURRENT THROUGH 17 FEBRUARY 1981: A notice regarding the latest flight information.

Prepared and published by the Defense Mapping Agency Hydrographic/Topographic Center, Washington, D.C. Completed January 1981.

SCALE 1:250,000: A block of text providing scale information and sheet identification.



JOINT OPERATIONS GRAPHIC (AIR)



CONTOUR INTERVAL APPROXIMATELY 330 FEET WITH RELIEF PARTIALLY SHOWN BY FORM LINES.

USERS SHOULD REPORT CORRECTIONS, ADDITIONS, AND COMMENTS TO THE NIMA OPERATIONAL HELP DESK.

ROADS-YOLLAR: A table describing road types and symbols.

RAILROADS-DEMIRYOLLAR: A table describing railway lines and symbols.

BOUNDARIES-HUDUTLAR: A table describing administrative boundaries and symbols.

AERODROMES (Military or Civil): A table describing airports and symbols.

VISUAL AIDS AND OBSTRUCTIONS: A table describing obstructions and symbols.

ATTENTION: A box containing a large number '125' and related information.

NOTES-NOTLAR: A section of notes providing additional information and warnings.