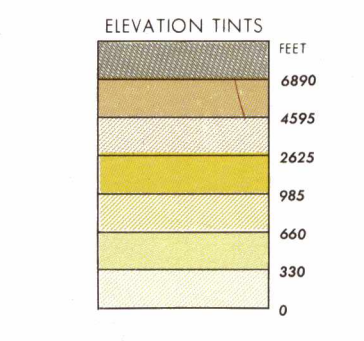
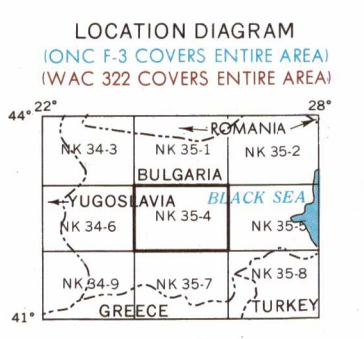


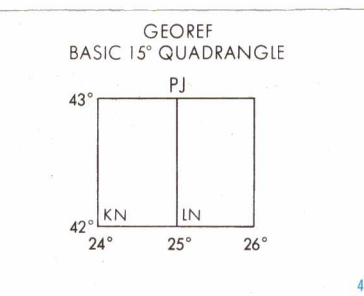
SERIES 1501 AIR SHEET NK 35-4 EDITION 2



RELIABILITY OF THIS SHEET (as determined by standard practices) MAP FEATURE DATE OF INFORMATION



GLOSSARY defining symbols for Gora (mountain range), Gora (railroad station), and Yazovir (reservoir).

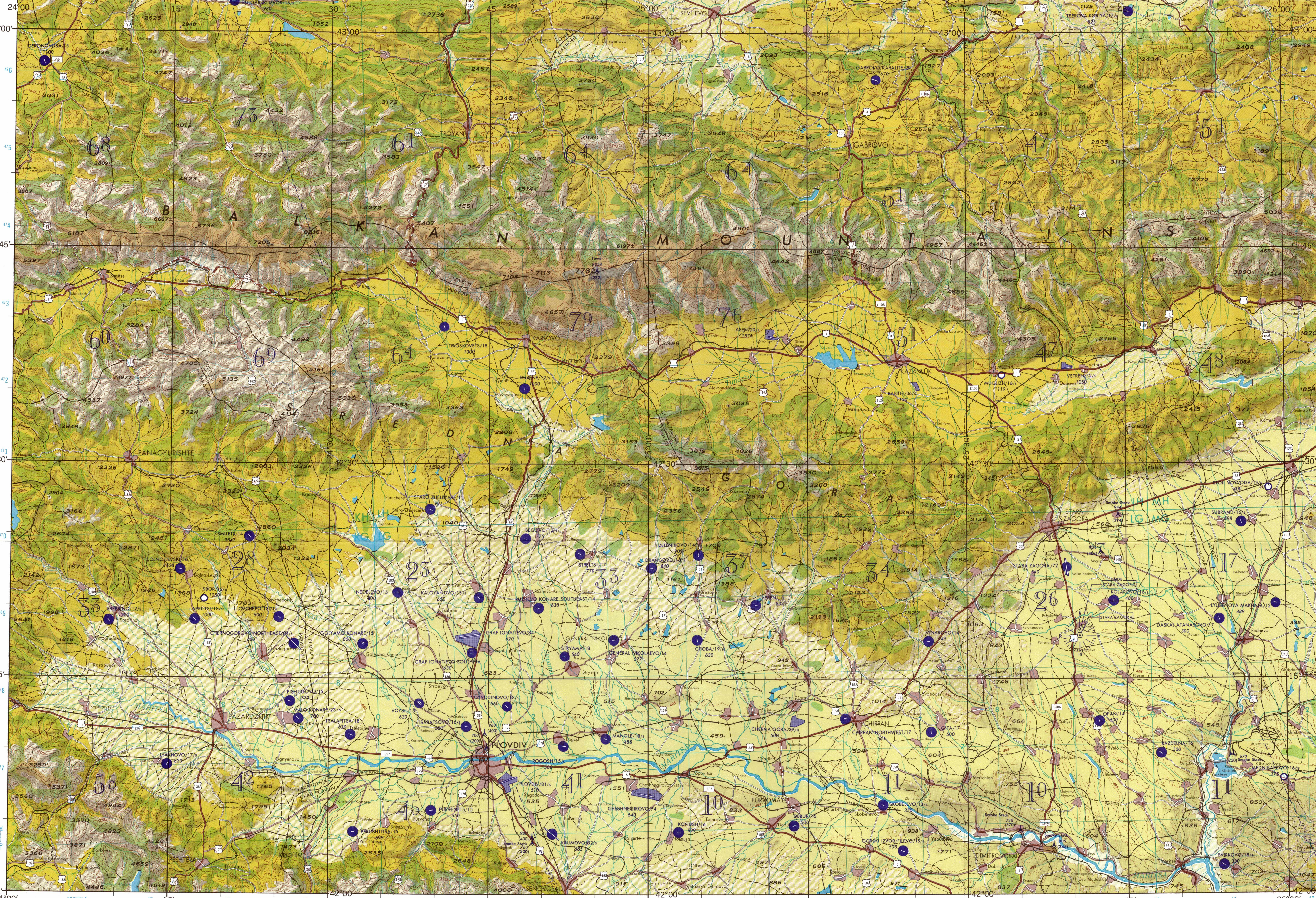


CAUTION AIR INFORMATION CURRENT THROUGH 23 JULY 1975

LINE OF EQUAL MAGNETIC VARIATION FOR 1975 (Annual rate of change 1' increase)

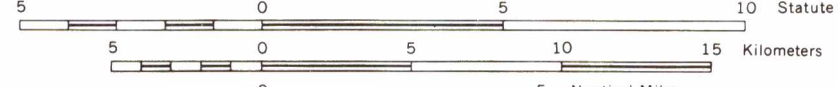
Prepared and published by the Defense Mapping Agency Aeronautical Center, St. Louis Air Force Station, Missouri 63118.

Scale 1:250,000 PLOVDIV, BULGARIA. Includes series information and a small map of Bulgaria.



VEGETATION - ΒΑΣΙΣΤΗΣ - TENEBOBT

JOINT OPERATIONS GRAPHIC (AIR)



ELEVATIONS IN FEET ΤΨΗ ΕΙΣ ΠΟΔΑΣ YÜKSEKLİKLER FITDIR

AERODROMES - ΑΕΡΟΠΟΡΙΑ - HAVA MEYDANLARI. Includes details for EDNA (50/725) and other facilities.

Other facilities VISUAL AIDS AND OBSTRUCTIONS. Includes symbols for towers and obstructions.

Notes and additional information including terrain elevation details and a maximum terrain elevation diagram.

Table with columns for road types (SS1, LG) and their corresponding symbols.

CONTOUR INTERVAL APPROXIMATELY 330 FEET WITH SUPPLEMENTARY CONTOURS AT APPROXIMATELY 165 FEET. Includes a note about blue numbered lines.

Other facilities VISUAL AIDS AND OBSTRUCTIONS. Includes a note about terrain elevation details.

Notes: CAUTION: Power transmission line information on this sheet is incomplete. Includes a note about the alignment of administrative boundaries.