

SERIES 1501 AIR  
SHEET NJ 42-5  
EDITION 2

SERIES 1501 COMPANION SHEET IS EDITION 1

LEGEND

- POPULATED PLACES**
- OVER 100,000: ALMATY
  - 50,000 to 100,000: BALKHASH
  - 10,000 to 50,000: TATARSK
  - 2,000 to 10,000: *Forab*
  - less than 2,000: *Klerk*
  - landmark feature: *Landmark*
- ROADS**
- All weather hard surface: *Principal* (3/4" WIDE), *Secondary* (1/4" WIDE)
  - Two or more lanes wide: *3/4" WIDE*
  - One lane wide: *1/4" WIDE*
  - All weather loose or light surface: *3/4" WIDE*
  - Two or more lanes wide: *3/4" WIDE*
  - One lane wide: *1/4" WIDE*
  - Fair or dry weather: *Loose surface*
  - Loose surface: *Loose surface*
  - Track or trail: *Track or trail*
- RAILROADS**
- Normal gauge 1,523m (5'0")
  - Narrow gauge
- BOUNDARIES**
- International
  - Primary administrative
  - Secondary administrative
- VEGETATION**
- Woods-brushwood
  - Orchard-Vineyard
- HYDROGRAPHY**
- Inundated land
  - Seawalls, piers
  - Swamp or marsh
  - Intermittent lake
  - Depth curve
  - Keel, limit of danger
  - Wall, Spring
  - Perennial lake
  - Navigable canal
  - Dam
  - Salt pan
  - Falls
  - Rapids
  - Rocks, Sunken, Awash
  - Glacier, Glacial Moraine

**TERRAIN ELEVATIONS**

HIGHEST KNOWN elevation is 14670± feet at 39°01'N, 67°33'E  
Spot elevation, Normal, Critical: 768 ±1549  
Horizontal control point: ±  
± following elevation value indicates accuracy is not within 100 feet.

**AERODROMES (Military or Civil)**

EDNA/50s: *EDNA/50s*

Runway pattern known: *EDNA/50s*

EDNA-Name: *EDNA-Name*

50-Length of longest runway to nearest hundreds of feet

s-Soft or unimproved surface

u-Unknown surface

725-Elevation

Runway pattern unknown: *EDNA/50s*

HELIPORT/HELIPAD: *HELIPORT/HELIPAD*

**CONTROLLED AIRSPACE**

ADIZ: *ADIZ*

**VISUAL AIDS AND OBSTRUCTIONS**

Obstruction: *Obstruction*

1108-Elevation of obstruction top, above sea level

(259)-Elevation of obstruction top, above ground level

Group obstruction: *Group obstruction*

Radio facility obstruction: *Radio facility obstruction*

Power transmission line: *Power transmission line*

**CAUTION**

Vertical obstructions, including powerlines, have been extracted from the most reliable sources available. However, there is no assurance that all are shown, or that their locations or heights are exact.

**CAUTION**

**AIR INFORMATION CURRENT THROUGH 3 APRIL 1992**

Consult NOTAMS and Flight Information Publications for the latest air information; the DOD Aeronautical Chart Updating Manual or MOD (U.K.) Aeronautical Chart Amendment document, for other chart revision information.

**LINE OF EQUAL MAGNETIC VARIATION FOR 1990**  
(Annual rate of change, no change.)

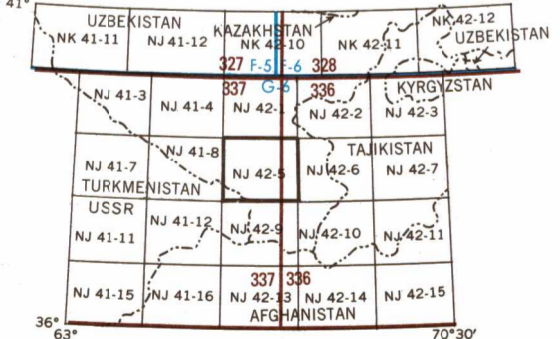
**ATTENTION**

**THIS CHART CONTAINS MAXIMUM ELEVATION FIGURES (MEF)**

The Maximum Elevation Figures shown in quadrangles bounded by ticked lines of latitude and longitude are represented in THOUSANDS and HUNDREDS of feet above mean sea level. The MEF is based on information available concerning the highest known feature in each quadrangle, including terrain and obstructions (trees, towers, antennas, etc.).

EXAMPLE: 12,500 feet **125**

**LOCATION DIAGRAM**  
(ONIC INDEX SHOWN IN BLUE)  
(WAC INDEX SHOWN IN RED-BROWN)



**LIMITED DISTRIBUTION**

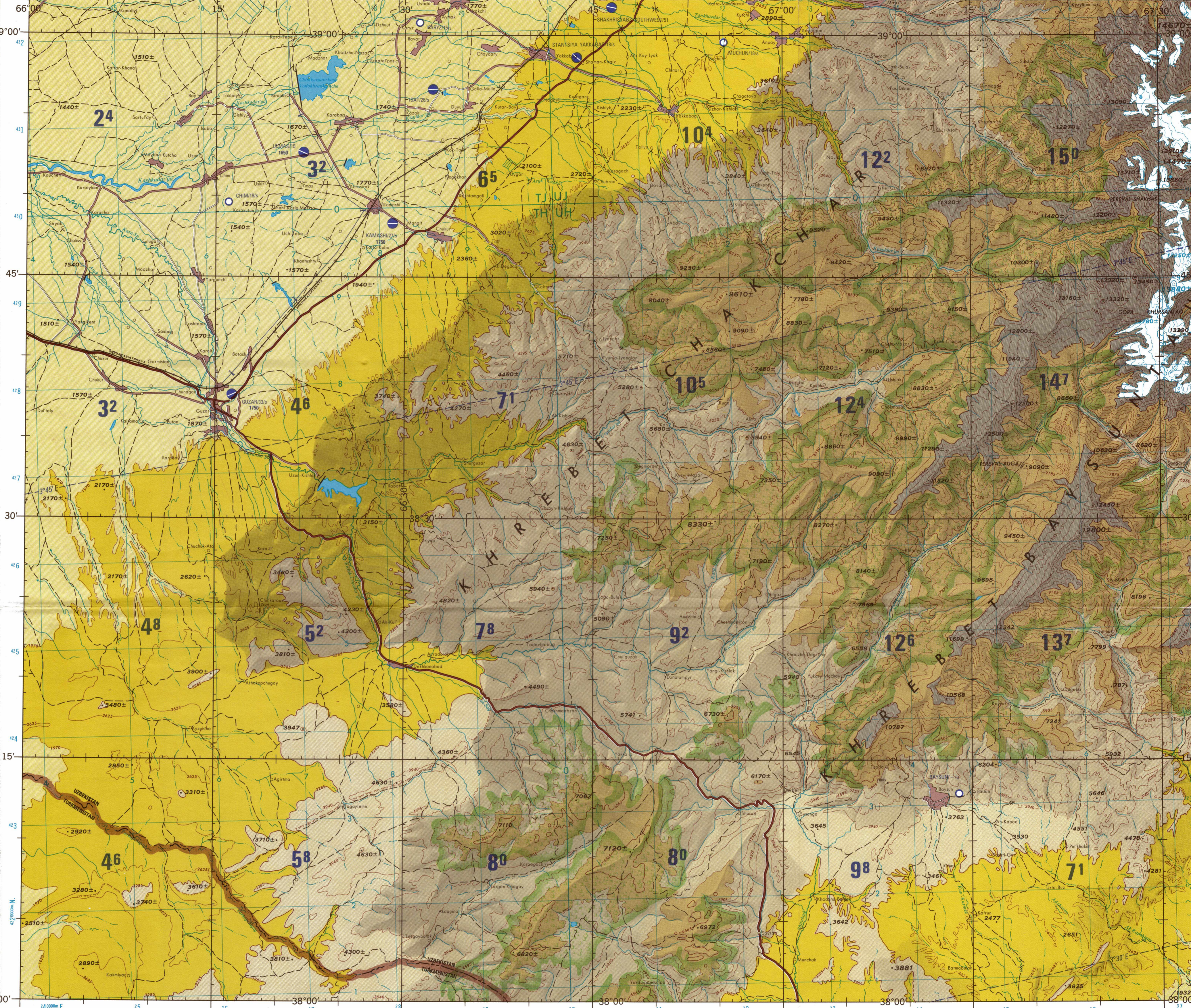
Distribution authorized to DoD, IAW 10 U.S.C. 59130 & 455. Release authorized to U.S. DoD contractors, IAW 48 C.F.R. 5252.245-7000. Refer other requests to Headquarters, NIMA, ATTN: Release Officer, Stop P-25, Destroy as 'For Official Use Only.' Removal of this caveat is prohibited.

**SCALE 1:250,000**  
GUZAR, UZBEKISTAN;  
TURKMENISTAN

SERIES 1501 AIR  
SHEET NJ 42-5  
EDITION 2



Prepared and published by the Defense Mapping Agency Hydrographic/Topographic Center, Bethesda, MD. Compiled 1970.



**JOINT OPERATIONS GRAPHIC (AIR)**

Scale 1:250,000  
0 5 10 15 20 25 30 Statute Miles  
0 5 10 15 20 25 30 Kilometers  
0 5 10 15 20 25 30 Nautical Miles

CONTOUR INTERVAL APPROXIMATELY 660 FEET (200 METERS)

BLUE NUMBERED LINES INDICATE THE 10,000 METER UNIVERSAL TRANSVERSE MERCATOR GRID, ZONE 42, WORLD GEODETIC SYSTEM ELLIPSOID.

THE DATUM AND ELLIPSOID FOR THIS MAP HAVE CHANGED FROM PREVIOUS EDITIONS. FOR ADJACENT AND OVERLAPPING SHEETS, THERE ARE NO SIGNIFICANT CHANGES IN GRID OR GEOGRAPHIC VALUES AT THIS SCALE.

GRID ZONE IDENTIFICATION	TO GRID X STANDARD REFERENCE ON THIS SHEET TO NEAREST 1000 METERS
42S	SAMPLE POINT: Shimb
TH	1. Read letters identifying 100,000 meter squares in which the point lies.
UH	2. Locate first VERTICAL grid line to LEFT of point and read LARGE figure showing the line number in the bottom margin, or on the line itself.
	3. Estimate tenths from grid line to point.
	4. Locate first HORIZONTAL grid line BELOW point and read LARGE figure showing the line number in the left margin, or on the line itself.
	5. Estimate tenths from grid line to point.
SAMPLE REFERENCE	6. Reporting beyond 3F in any direction, give Grid Zone Designation, ex: 42SUN309

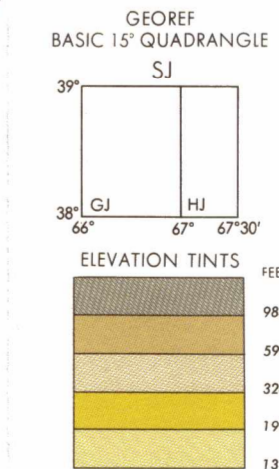
**GLOSSARY**

Gora ..... mountain

Khrebet ..... range

Pereval ..... mountain pass

Vodokhranilishche ..... reservoir



**RELIABILITY OF THIS SHEET**  
(As determined by standard practices)

MAP FEATURE	Date of information
ALL FEATURES	1989

COMPILLED FROM BEST AVAILABLE SOURCE MATERIALS

Horizontal Datum: World Geodetic System  
Vertical Datum: Mean Sea Level  
Transverse Mercator Projection

**NOTES:**

Powerlines are shown except within populated place limits. Other obstructions are shown if they are 200 feet or more above ground level. See caution note.

BOUNDARY REPRESENTATION IS NOT NECESSARILY AUTHORITY-TATM.

Names for symbolized populated places are omitted where information is not available or where density of detail does not permit their inclusion.

On this graphic a lone is generally considered as being 8 feet (2.5 meters) in width.

Names and boundaries of administrative divisions in Uzbekistan and Turkmenistan are not available.

DEFICIENCY OF INTERNATIONAL BOUNDARIES HAS BEEN CHANGED SINCE THE LAST EDITION.

Reprinted by NIMA 1-2000

USERS SHOULD REFER CORRECTIONS, ADDITIONS, AND COMMENTS FOR IMPROVING THIS PRODUCT TO:  
(US Users: Director, NIMA, ATTN: COD, 4600 Sangamon Road, Bethesda, MD 20816-5003)  
(UK Users: Directorate General of Military Survey, Ministry of Defence, Elmwood Avenue, Farnham, Middlesex, England TW 13 7AH)

NSN 7641014102877  
NIMA REF. NO. 1501ANJ4205