

SERIES 1501 AIR SHEET NI 53-4 EDITION 2

POPULATED PLACES
 Over 500,000
 100,000 to 500,000
 25,000 to 100,000
 2,500 to 25,000
 Less than 2,500

TOKYO
 GIFU
 YAMAGUCHI
 Kaitachi
 Kaita

ROADS
 Dual highway, under construction
 All weather
 Hard surface, two or more lanes wide
 Loose or light surface, two or more lanes wide
 Hard surface, one lane wide
 Loose or light surface, one lane wide
 Fair or dry weather, loose surface
 Cart track
 Footpath, trail
 National route marker

RAILROADS
 Normal gauge 3'6" (1.067m)
 Narrow gauge 2'6" (0.762m)

BOUNDARIES
 Primary administrative

TERRAIN ELEVATIONS
 HIGHEST KNOWN elevation is 70 050 feet at 35°53'N, 137°29'E
 Spot elevation: normal, critical

VEGETATION
 Woods, brushwood, Orchard

HYDROGRAPHY
 Swamp, Rice
 Depth curves in fathoms
 Rock, Awash, Sunken
 Wreck, Exposed, Sunken
 Limit of danger, Reef
 Foreshore flat

AERODROMES (Military or Civil)
 Field limits with runway pattern
 EDNA—Name
 50—Length of longest runway to nearest hundreds of feet
 S—Soft or unimproved surface
 725—Elevation

SEAPLANE BASE
 SEAPLANE (EMERGENCY)

HELIPORT

RADIO FACILITIES
 RADIO RANGE L/MF
 MULTIPLE RADIO FACILITIES

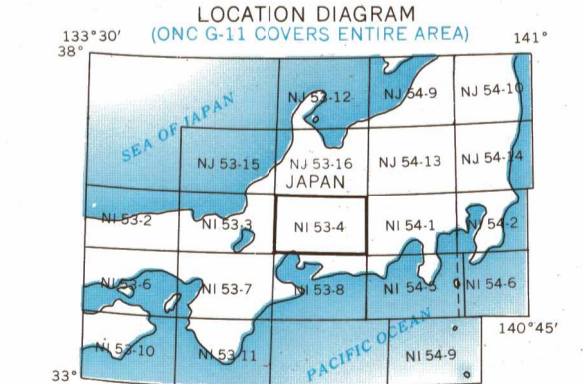
CONTROLLED AIRSPACE
 ADIZ
 ATLANTIC ADIZ

VISUAL AIDS AND OBSTRUCTIONS
 Obstruction
 1108—Elevation of obstruction top, above sea level
 (259)—Elevation of obstruction top, above ground level
 Group obstruction
 Radio facility obstruction
 Power transmission line
 Ocean station vessel (Normal position)
 Visual ground sign
 Aero light, Marine light

CAUTION
 AIR INFORMATION CURRENT THROUGH 13 NOVEMBER 1978
 Consult NOTAMS and Flight Information Publications for the latest air information; the DOD Aeronautical Chart Updating Manual or MOD (U.K.) Aeronautical Chart Amendment document, for other chart revision information.

LINE OF EQUAL MAGNETIC VARIATION FOR 1975
 (Annual rate of change, no change)

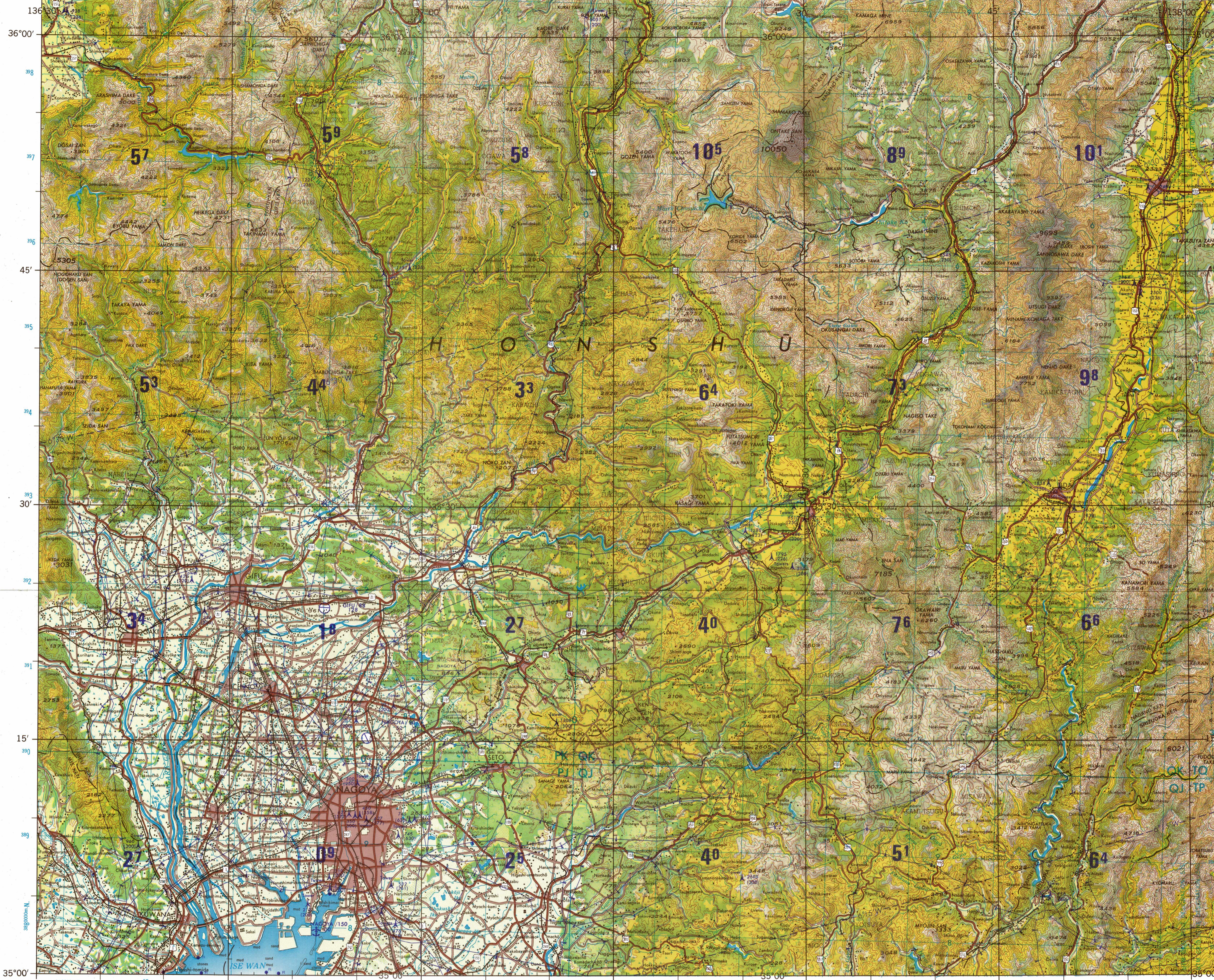
ATTENTION
 THIS CHART CONTAINS
 MAXIMUM ELEVATION FIGURES (MEF)
 The Maximum Elevation Figures shown in quadrangles bounded by ticked lines of latitude and longitude are represented in THOUSANDES and HUNDREDS of feet above mean sea level. The MEF is based on information available concerning the highest known feature in each quadrangle, including terrain and obstructions (towers, antennas, etc.). In areas of extensive unreliable relief, the MEF is shown by a note spaced across the area.
 EXAMPLE: 12,500 feet **125**



LIMITED DISTRIBUTION Distribution authorized to DOD
 IAW 10 USC 9630 & 456; Release authorized to U.S. Civilian Contractors
 IAW 48 CFR 1.52-246-7002. Mail other requests to Headquarters,
 NIMA, ATTN: Special Officer, Dept. 25, Division of the Chief of Staff,
 Removal of the cover is prohibited.

SCALE 1:250,000
 NAGOYA, JAPAN

SERIES 1501 AIR SHEET NI 53-4 EDITION 2

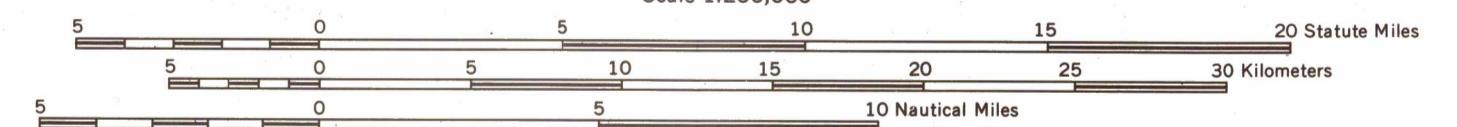


ELEVATIONS IN FEET DEPTHS IN FATHOMS
 JOINT OPERATIONS GRAPHICS (AIR)
 Scale 1:250,000
 ELEVATIONS IN FEET DEPTHS IN FATHOMS



Prepared and published by the Defense Mapping Agency Hydrographic/Topographic Center, Washington, D. C.

GRID ZONE DESIGNATION: 53S		TO GIVE A STANDARD REFERENCE ON THIS SHEET TO NEAREST 1000 METERS	
100,000 M. SQUARE IDENTIFICATION	SAMPLE POINT: Ena		
PK QK			
NO PJ OJ			
IGNORE THE SMALLER FIGURES OF ANY GRID NUMBER; THESE ARE FOR FINDING THE FULL COORDINATES. USE ONLY THE LARGER FIGURES OF THE GRID NUMBER; EXAMPLE: 5800000		SAMPLE REFERENCE: QK1925 If existing feature 58.2 is 10' W. point, Grid Zone Designation is: 53SUK1925	



CONTOUR INTERVAL APPROXIMATELY 330 FEET

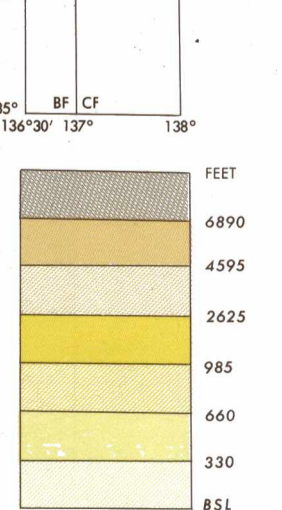
BLUE NUMBERED LINES INDICATE THE 10000 METER UNIVERSAL TRANSVERSE MERCATOR GRID ZONE 53, BESSER SPHEROID

USERS SHOULD REFER TO CORRECTIONS, ADDITIONS, AND COMMENTS TO THE NIMA CUSTOMER HELP DESK: 1-800-455-0880; COMMERCIAL: 314-200-6032; (204) 480-5032; OR WRITE TO: DIRECTOR, NATIONAL IMAGERY AND MAPPING AGENCY, ATTN: CDD, MAIL STOP P-37, 4800 SANGAMORE ROAD, BELTHERD, MD 20719-5033

GLOSSARY

- Dake.....mountain
- Dam.....dam
- Gawa.....stream, river
- Honsen.....railroad
- Kansen.....stream, river
- Ken.....primary administrative division
- Ko.....reservoir, pond, lake
- Ko.....harbor
- Min.....mountain
- San.....mountain
- Sen.....railroad
- Susono.....lower slope
- Take.....mountain
- To.....primary administrative division
- Tage.....mountain pass
- Wan.....bay, cove
- Yama.....hill, mountain, mountain range
- Zan.....mountain

GEOREF BASIC 15° QUADRANGLE XJ



RELIABILITY OF THIS SHEET (as determined by standard practices)

PLOTTING ACCURACY 90% ASSURANCE	
Horizontal	within 410 ft.
Vertical	within 164 ft.
DATE OF INFORMATION	
Road classification	1970
Vegetation	1963
Coastal hydrography	1961
All other features	1963
Map field checks	1970

NOTES
 A lane is generally considered as being 2.44 to 4.88 meters (8 to 16 feet) in width.
 Only obstructions 200 feet or more above ground level are shown. The information on obstructions is not necessarily complete.

NSN 7641014101435
 NIMA REF. NO. 1501ANI5304