

1:250,000 - EDITION 1
PATHANKOT, INDIA
1501A NI 43-15
INDIA, JAMMU AND KASHMIR, PAKISTAN

- LEGEND**
- POPULATED PLACES**
- Over 100,000
 - 50,000 to 100,000
 - 10,000 to 50,000
 - 5,000 to 10,000
 - Less than 5,000
- ROADS**
- Dual Highway under construction
 - All weather
 - Hard surface, two or more lanes wide
 - Hard surface, one lane wide
 - Loose or light surface, two or more lanes wide
 - Loose or light surface, one lane wide
 - Fair or dry weather, loose surface
 - Cart track
 - Foot path, trail
 - National Route
- RAILROADS**
- Normal gauge 1.6m. 156"0
 - Narrow gauge
- BOUNDARIES**
- International
 - Province or state
 - Details
 - Landmark feature
 - Mine
- TERRAIN ELEVATIONS**
- Highest elevation is 19040 ± feet located at 32°52'N, 76°32'E
Spot elevation, normal, critical 000 0000
+ following elevation value indicates accuracy is not within 100 feet
Horizontal control point

- HYDROGRAPHY**
- Depth curve fathoms
 - Falls, Rapids
 - Salt evaporator
 - Swamp or marsh
 - Mangrove (Mud Swamp)
 - Reef, limit of gangster
 - Rocks, Surfer's Awash
 - Terrace flat
 - Levee
 - Unclassified stream
 - Glacier, Glacial moraine
- VEGETATION**
- Woods, brushwood, plantation, Tropical grass
- AERODROMES**
- Field limits with runway pattern
 - EDNA - Name
 - 50 - Length of longest runway to nearest hundreds of feet
 - S - Soft or unimproved surface
 - 725 - Elevation
 - Field limits, with runway pattern unknown
 - Field limits and runway pattern unknown
- SEAPLANE BASE**
- SEAPLANE (EMERGENCY)**
- HELIPORT**
- RADIO FACILITIES**
- RADIO RANGE (F/MF)
 - MULTIPLE RADIO FACILITIES
 - CONTROLLED AIRSPACE
- ADIZ**
- VISUAL AIDS AND OBSTRUCTIONS**
- Obstruction
 - 1108 - Elevation of obstruction top, above sea level
 - (259) - Elevation of obstruction top, above ground level
 - Group obstruction
 - Radio facility obstruction
 - Power transmission line
 - Ocean station, vessel (Normal position)
 - Visual ground sign
 - Aero light, Marine Light

CAUTION
AIR INFORMATION CURRENT THROUGH
3 MAY 1967
Consult Notices to Airmen (NOTAMs) and Flight Information Publications (FIPs) for the latest air information; the Chart Updating Manual (CHUM) for other chart revision information.

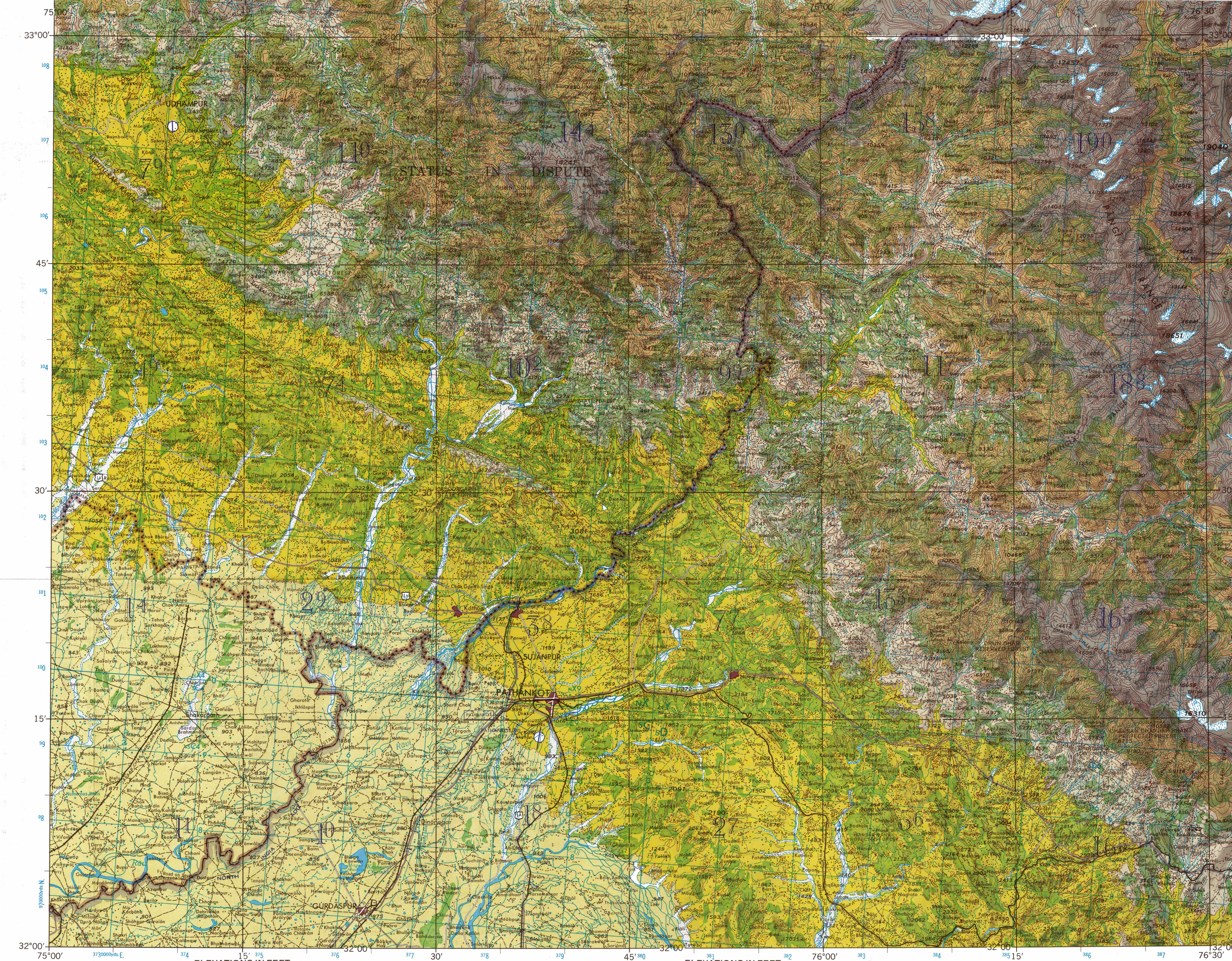
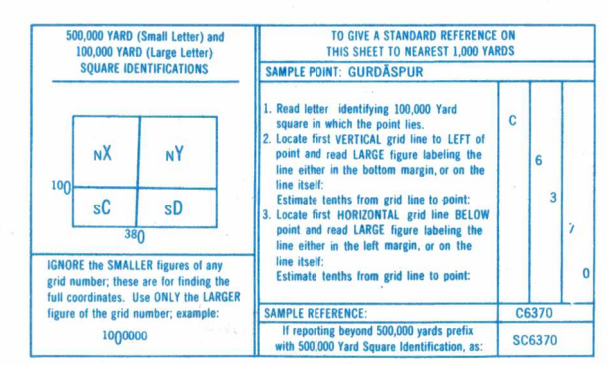
HIGHEST TERRAIN elevation for each 15 MINUTE QUADRANGLE is represented in THOUSANDS and HUNDREDS of feet. They are omitted where relief information is inadequate. A minus sign (-) following the figure indicates that the figure is based on an estimated elevation.

EXAMPLES

51 81-

MAGNETIC VARIATION FOR 1965 IS APPROXIMATELY
+1°52' OVER THE ENTIRE AREA.
(Annual rate of change 3' decrease)

NOTES:
No obstructions 200 feet or more above ground level are known to exist within this area.
CAUTION: Power transmission line information on this sheet is incomplete.
THE REPRESENTATION OF INTERNATIONAL BOUNDARIES IS NOT NECESSARILY AUTHORITY.



JOINT OPERATIONS GRAPHIC (AIR)

Scale 1:250,000

20 Statute Miles

30 Kilometers

10 Nautical Miles

CONTOUR INTERVAL 500 FEET
VERTICAL DATUM: MEAN SEA LEVEL
HORIZONTAL DATUM: INDIAN
TRANSVERSE MERCATOR PROJECTION

GLOSSARY

- Dhar: mountain range
- Gad: stream
- Jhil: lake
- Kanda: hill
- Khad: stream
- Nadi: stream
- Nala: stream
- Sir: tank

RELIABILITY OF THIS SHEET (as determined by standard practices)

MAP FEATURE	DATE OF INFORMATION
ALL FEATURES	1966
COMPILED FROM BEST AVAILABLE SOURCE MATERIALS	

GEOREF BASIC 15' QUADRANGLE TJ

LOCATION DIAGRAM FOR NI 43-15 (MAC INDEX SHOWN IN BLUE)

NI 43-5	NI 43-6	NI 43-7	NI 43-8	NI 43-9
NI 43-10	NI 43-11	NI 43-12	NI 43-13	NI 43-14
NI 43-15	NI 43-16	NI 43-17	NI 43-18	NI 43-19

ELEVATION TINTS

15000
10000
5000
3000
1000
500

Prepared under the direction of the Defense Intelligence Agency and published by the Aeronautical Chart and Information Center, U.S. Air Force, St. Louis, Missouri, 63118. Compiled from maps and intelligence information available as of December 1966.

DECLASSIFIED BY AUTHORITY OF THE DMA DOPPO, 10 JUNE 1980.

USERS SHOULD REFER TO THE MMS OPERATIONAL HELP DESK: 1-800-455-0880, COMMERCIAL 314-263-4864; OR WRITE TO: DIRECTOR, NATIONAL IMAGERY AND MAPPING AGENCY, ATTN: IS, MAIL STOP 1-68, 4800 SANGAREE ROAD, BETHESDA, MD 20815-5002.

1:250,000 - EDITION 1
PATHANKOT, INDIA
1501A NI 43-15

NSN 7641014096058
NIMA REF. NO. 1501ANI4315
ED. NO. 001