

SERIES 1501 AIR SHEET NI 43-13 EDITION 2

POPULATED PLACES

Over 100,000 ISLAMĀBĀD

50,000 to 100,000 QUETTA

10,000 to 50,000 Mianwāli

2,000 to 10,000 Fatehjang

Less than 2,000 Akhori

ROADS

Dual highway 4 LANES DUAL

All weather, hard surface 4 LANES

More than two lanes wide 4 LANES

Two lanes wide 4 LANES

One lane wide 4 LANES

All weather, loose or light surface 3 LANES

More than two lanes wide 3 LANES

Two lanes wide 3 LANES

One lane wide 3 LANES

Fair or dry weather, loose surface 3 LANES

Cart track 3 LANES

Footpath, trail 3 LANES

Route marker 3 LANES

RAILROADS

Normal gauge, single track 1.44m (4'8 1/2") Double track 3 LANES

Narrow gauge 3 LANES

BOUNDARIES

International 3 LANES

OTHER FEATURES

Area name RÜDAK

Mine or quarry RÜDAK

Campsite, Ruins, Watermill RÜDAK

School, Church, Landmark RÜDAK

Mosque, Muslim shrine RÜDAK

Small reservoir or cistern RÜDAK

Well, Personal, Intersecting, Spring RÜDAK

Underground aqueduct with shafts RÜDAK

Sakhsa or Dry lake, Intermittent lake RÜDAK

Single line intermittent stream, Wadi RÜDAK

Marsh or swamp; Land subject to inundation RÜDAK

Mound, Levée RÜDAK

Mudflat; Distorted surface RÜDAK

Sand, flat or rolling; Sand dunes RÜDAK

Horizontal control point RÜDAK

VEGETATION

Woods RÜDAK

Orchard RÜDAK

HYDROGRAPHY

Rocks, uncovering or awash RÜDAK

Exposed wreck RÜDAK

Limit of danger, Reef RÜDAK

Foreshore flat RÜDAK

Depth curve, Lighthouse RÜDAK

TERRAIN ELEVATIONS

Spot elevation, normal, critical 1:646 '840

HIGHEST KNOWN elevation is 3970 feet at the following coordinates:
Geographic: 32°32' N, 72°11' E
Grid: BS3503

Following elevation value indicates accuracy is not within 100 feet

AERODROMES (Military or Civil)

EDNA/50/4 725

Runway pattern known 725

Field limits and runway pattern unknown 725

HELIPORT

RADIO FACILITIES

VOR VORTAC 725

TACAN VOR/DME 725

RADIO RANGE LP/MF 725

MULTIPLE RADIO FACILITIES 725

CONTROLLED AIRSPACE

ADIZ ATLANTIC ADIZ

VISUAL AIDS AND OBSTRUCTIONS

Obstruction 1108

1108 Elevation of obstruction top, above sea level
(259) Elevation of obstruction top, above ground level

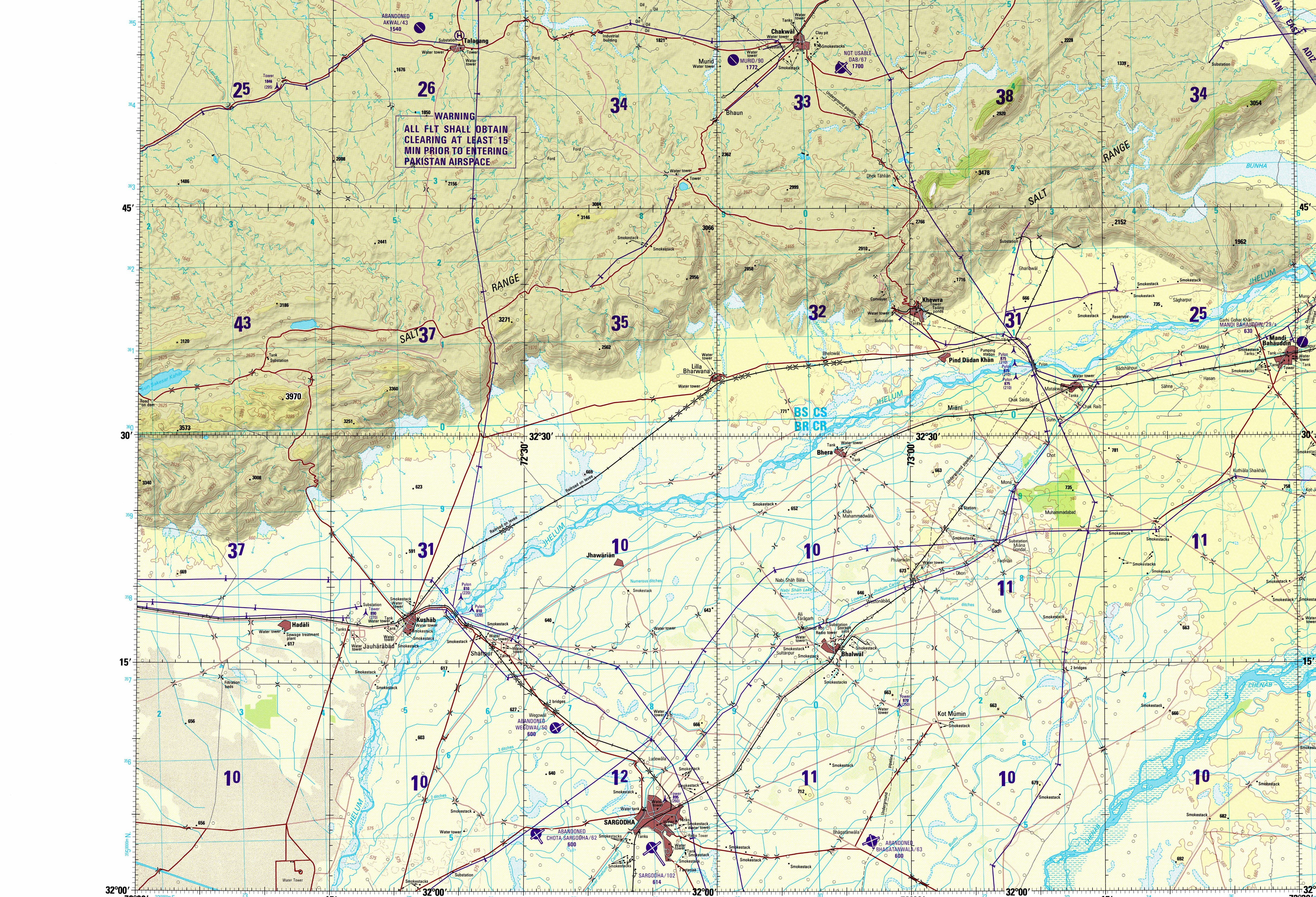
Group obstruction 1108

Radio facility obstruction 1108

Power transmission line 1108

Visual ground sign 1108

Aero light; Marine light 1108

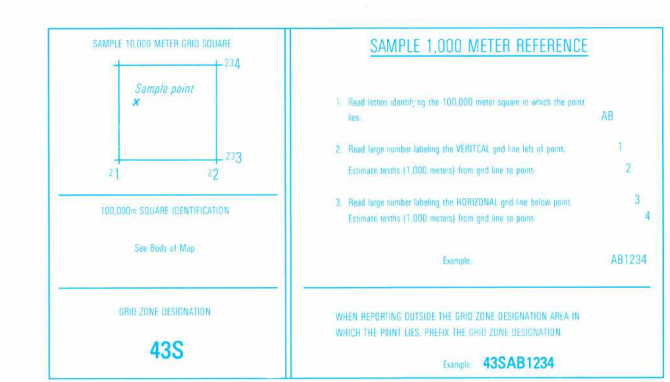


Prepared and published by the Defense Mapping Agency
Aerospace Center, St. Louis, Missouri.
Compiled August 1993.



CONVERSION OF ELEVATIONS

FEET	METERS	FEET	METERS
1000	305	10000	3048
500	152	5000	1524
300	91	3000	914
200	61	2000	610
150	46	1500	457
100	31	1000	305



JOINT OPERATIONS GRAPHIC (AIR)

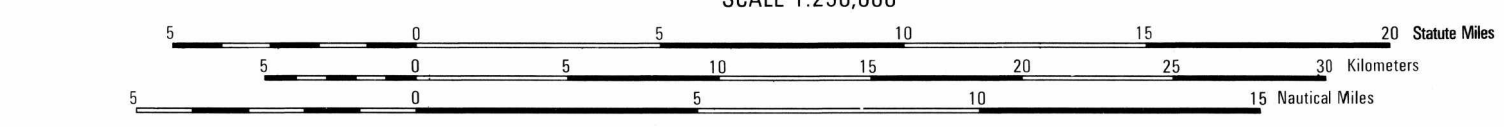
SCALE 1:250,000

CONTOUR INTERVAL APPROXIMATELY 165 FEET WITH SUPPLEMENTARY CONTOURS AT APPROXIMATELY 85 FEET

BLUE NUMBERED LINES INDICATE THE 10,000 METER UNIVERSAL TRANSVERSE MERCATOR GRID, ZONE 43, WGS 84 ELLIPSOID

COORDINATE CONVERSION FROM WGS 84 DATUM TO INDIAN DATUM EVEREST ELLIPSOID
Geographic: Add +2.4' Long., Add +1.3' Lat.

USERS SHOULD REFER CORRECTIONS, ADDITIONS, AND COMMENTS TO THE NIMA OPERATIONAL HELP DESK:
1-800-495-0899 COMMERCIAL 314-263-4864 OR WRITE TO: DIRECTOR, NATIONAL IMAGERY AND MAPPING AGENCY, ATTN: CG, MAIL STOP L-68, 4809 SANGAMORE ROAD, BETHESDA, MD 20815-5003.



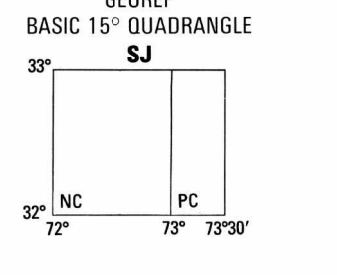
GLOSSARY

Kahar lake

Kas stream

Kot hamlet

Nala stream



RELIABILITY OF THIS GRAPHIC
(as determined by standard practices)

PLOTING ACCURACY 90% ASSURANCE	AREA		
	I	II	III
Horizontal	within 425 ft	within 425 ft	within 85 ft
Vertical	within 85 ft	within 85 ft	within 85 ft
GRAPHIC FEATURE	AREA I	AREA II	AREA III
All other features	1993	1992	

Foot information not verified by reconnaissance. Contours not field checked.

Horizontal Datum: WGS84
Vertical Datum: Mean Sea Level
Transverse Mercator Projection

NOTES

Powerlines are shown except within populated place limits. Other obstructions are shown, if they are 200 feet or more above ground level. See caution note. On this graphic a lane is generally considered as being 8 feet (2.5 meters) in width. BOUNDARY REPRESENTATION IS NOT NECESSARILY AUTHORITY.

ALIGNMENT OF ALL BOUNDARIES IS APPROXIMATE. Food classification should be referred to with caution.

REPRINTED BY NIMA 10-01

NSN 7641014103063
NIMA Ref No. 1501ANI4313