

SERIES 1501 AIR SHEET NI 42-15 EDITION 2

POPULATED PLACES

- Over 100,000: **KÁBUL**
- 50,000 to 100,000: **HERÁT**
- 10,000 to 50,000: **Qandúz**
- 2,000 to 10,000: **Kóhák**
- Less than 2,000: **Mansáh**

ROADS

- Dual highway: 4 LANES DUAL
- All weather, hard surface: 4 LANES
- More than two lanes wide: 4 LANES
- Two lanes wide: 4 LANES
- One lane wide: 4 LANES
- All weather, loose or light surface: 3 LANES
- More than two lanes wide: 3 LANES
- Two lanes wide: 3 LANES
- One lane wide: 3 LANES
- Fair or dry weather, loose surface: 3 LANES
- Cart track: 3 LANES
- Footpath, trail: 3 LANES
- Road marker: 3 LANES

RAILROADS

- Normal gauge, single track 1.68m (5'6"): Double track
- Narrow gauge: 3 LANES

BOUNDARIES

- International: 4 LANES
- First-order administrative: 4 LANES

OTHER FEATURES

- Area name: 4 LANES
- Mine or quarry: 4 LANES
- Campsite, Ruins, Watermill: 4 LANES
- School, Church, Landmark: 4 LANES
- Mosque, Modern shrine: 4 LANES
- Small reservoir or cistern: 4 LANES
- Well, Perennial, Intermittent, Spring: 4 LANES
- Underground aqueduct with shafts: 4 LANES
- Sakha or Dry lake, Intermittent lake: 4 LANES
- Single line intermittent stream, Wadi: 4 LANES
- Marsh or swamp, Land subject to inundation: 4 LANES
- Mound, Levee: 4 LANES
- Mudflat, Distorted surface: 4 LANES
- Sand, flat or rolling, Sand dunes: 4 LANES
- Horizontal control point: 4 LANES

VEGETATION

- Woods, brushwood, Scattered trees: 4 LANES
- Orchard, vineyard, Scrub: 4 LANES

HYDROGRAPHY

- Rocks, uncovering or smash: 4 LANES
- Exposed wreck: 4 LANES
- Limit of danger, Reef: 4 LANES
- Foreshore flat: 4 LANES
- Depth curve, Lighthouse: 4 LANES

TERRAIN ELEVATIONS

- Spot elevation, normal: 4 LANES
- HIGHEST KNOWN ELEVATION IN GEOGRAPHIC GRID: **11,526** feet at the following coordinates: 32°36' N, 69°43' E, MW7413
- ± following elevation value indicates accuracy is not within 100 feet

AERODROMES (Military or Civil)

- Runway pattern known: 4 LANES
- Field limits and runway pattern unknown: 4 LANES

RADIO FACILITIES

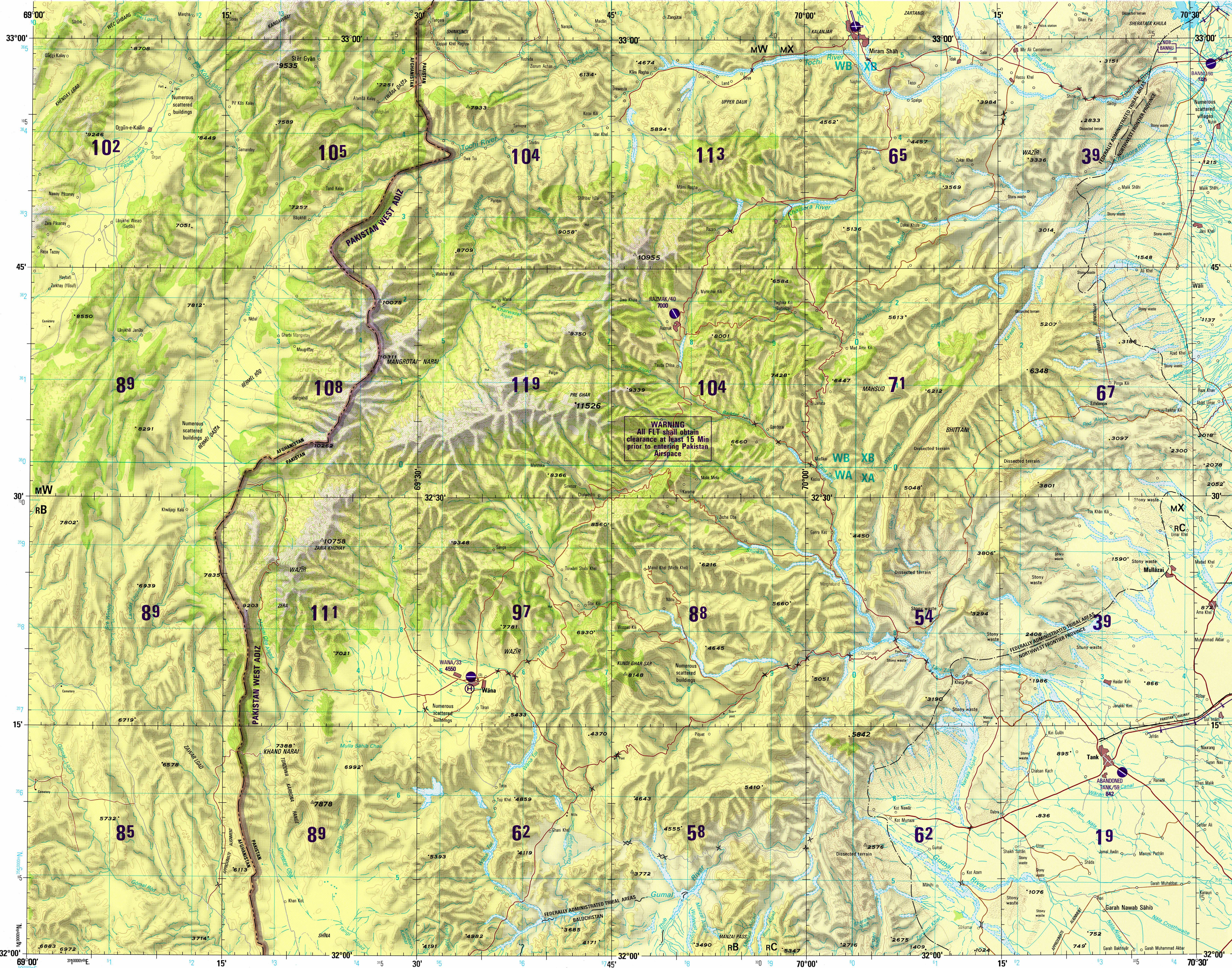
- VOR VORTAC: 4 LANES
- TACAN VOR/DME: 4 LANES
- RADIO RANGE LF/MF: 4 LANES
- MULTIPLE RADIO FACILITIES: 4 LANES

CONTROLLED AIRSPACE

- ADIZ: 4 LANES

VISUAL AIDS AND OBSTRUCTIONS

- Obstruction: 4 LANES
- 1100' Elevation of obstruction top, above sea level (250' Elevation of obstruction top, above ground level)
- Group obstruction: 4 LANES
- Radio facility obstruction: 4 LANES
- Power transmission line: 4 LANES
- Visual ground sign: 4 LANES
- Aero light, Marine light: 4 LANES



WARNING
All FLT shall obtain clearance at least 15 Min prior to entering Pakistan Airspace

CAUTION
AIR INFORMATION CURRENT THROUGH 15 FEBRUARY 1996
Consult NOTAMS and Flight Information Publications for the latest air information; the DINA Aeronautical Chart Updating Manual or MOD (U.K.) Aeronautical Chart Amendment document, for other chart revision information.

MAGNETIC VARIATION FOR 1995 IS APPROXIMATELY 1°45' EAST OVER THE ENTIRE AREA
(Annual rate of change, 1" increase)

ATTENTION
THIS CHART CONTAINS MAXIMUM ELEVATION FIGURES (MEF)
The Maximum Elevation Figures shown in quadrangles bounded by ticked lines of latitude and longitude are represented in THOUSANDS and HUNDREDS of feet above mean sea level. The MEF is based on information available concerning the highest known feature in each quadrangle, including terrain and obstructions (trees, towers, antennas, etc.).
125
EXAMPLE: 12,500 feet

LOCATION DIAGRAM
The representation of boundaries is not necessarily authoritative.

32°00'	69°00'	69°15'	69°30'	69°45'	70°00'
NI 42-9	NI 42-6	NI 42-7	NI 42-8	NI 42-5	
NI 42-9	NI 42-10	AFGHANISTAN	NI 42-11	NI 42-12	NI 42-9
NI 42-9	NI 42-11	NI 42-15	NI 42-16	NI 42-13	
430	431	432	433	441	440
NI 42-9	NI 42-7	NI 42-2	NI 42-4	NI 42-1	
NI 42-5	NI 42-6	NI 42-7	NI 42-8	NI 42-5	

Prepared and published by the Defense Mapping Agency, Compiled February 1996.

ELEVATIONS IN FEET

JOINT OPERATIONS GRAPHIC (AIR)

SCALE 1:250,000

CONTOUR INTERVAL APPROXIMATELY 330 FEET WITH SUPPLEMENTARY CONTOURS AT APPROXIMATELY 165 FOOT INTERVALS

BLACK NUMBERED TICKS INDICATE THE 1000-YARD MORAINE ZONE 1 GRID, EVEREST ELLIPSOID

USERS SHOULD REFER CORRECTIONS, ADDITIONS, AND COMMENTS TO THE NSA OPERATIONAL HELP DESK: 1-800-485-0886, COMMERCIAL 314-253-4864, GEN-REG-AREA OR WRITE TO: DIRECTOR, NATIONAL GEOSPATIAL-INTELLIGENCE AGENCY, ATTN: ES, MAIL STOP L-48 4600 SANGAMORE ROAD, BETHESDA, MD 20816-5003.

©COPYRIGHT 1996 BY THE UNITED STATES GOVERNMENT. NO COPYRIGHT CLAIMS UNDER TITLE 17 U.S.C.

ELEVATIONS IN FEET

GEOREF BASIC 15° QUADRANGLE SJ

COORDINATE CONVERSION WGS-84 TO INDIAN DATUM
Geographic: Add 1.1" Long, Add 1.1" Lat.

COORDINATE CONVERSION WGS-84 TO HERAT NORTH DATUM, INTERNATIONAL ELLIPSOID
Geographic: Subtract 23m E, Subtract 134m N.

Geographic: Subtract 9" Long, Subtract 6" Lat.

CONVERSION OF ELEVATIONS

FEET	METERS	FEET	METERS
1000	304.8	8000	2438
800	274	8000	2438
600	244	8000	2438
400	213	7000	2134
200	183	6000	1829
100	152	5000	1524
100	122	4000	1219
200	61	3000	914
100	46	2000	609
100	46	1500	457
100	31	1000	305

GLOSSARY

- Aligad: stream
- Dahic, dah: plain
- Ghar: mountain
- Khar: stream
- Ligad: stream
- Nah: stream
- Nara: press
- Ride, rid: stream
- To: stream
- Wahat: first order administrative division

ELEVATION TINTS

FEET
8800
2955
660

RELIABILITY OF THIS GRAPHIC
Compiled from best available source materials.
Horizontal Datum: World Geodetic System 1984
Vertical Datum: Mean Sea Level
Transverse Mercator Projection

NOTES
Paved areas are shown except within populated place tints. Obstructions are shown if they are 200 feet or more above ground level. See caution note. Following elevation value indicates accuracy is not within 100 feet. On this graphic a line is generally considered as being 2.5 to 3.8 meters (8 to 12 feet) in width. In built-up areas only through routes are classified. Caution: Not all telephone and electric service lines are shown. THE REPRESENTATION OF BOUNDARIES IS NOT NECESSARILY AUTHORITATIVE.

SCALE 1:250,000
WANA, PAKISTAN; AFGHANISTAN

SERIES 1501 AIR SHEET NI 42-15 EDITION 2

SERIES 1501 COMPANION SHEET IS EDITION 2

TO OBTAIN A STANDARD REFERENCE ON THIS SHEET TO RELATED 1:250,000 SHEETS

GRID ZONE DESIGNATION	EASTING	NORTHING
MW	430	431
MX	431	432
NA	432	433
NB	433	434
NC	434	435

CONTOUR INTERVAL APPROXIMATELY 330 FEET WITH SUPPLEMENTARY CONTOURS AT APPROXIMATELY 165 FOOT INTERVALS

BLACK NUMBERED TICKS INDICATE THE 1000-YARD MORAINE ZONE 1 GRID, EVEREST ELLIPSOID

USERS SHOULD REFER CORRECTIONS, ADDITIONS, AND COMMENTS TO THE NSA OPERATIONAL HELP DESK: 1-800-485-0886, COMMERCIAL 314-253-4864, GEN-REG-AREA OR WRITE TO: DIRECTOR, NATIONAL GEOSPATIAL-INTELLIGENCE AGENCY, ATTN: ES, MAIL STOP L-48 4600 SANGAMORE ROAD, BETHESDA, MD 20816-5003.

©COPYRIGHT 1996 BY THE UNITED STATES GOVERNMENT. NO COPYRIGHT CLAIMS UNDER TITLE 17 U.S.C.

NSN 764101 4093248
NGA Ref No: 1501ANI4215