

SERIES 1501 AIR SHEET NI 37-3 EDITION 4  
SERIES 1501 COMPANION SHEET IS EDITION 2

**POPULATED PLACES**

Over 100,000 TEL AVIV-YAFO  
50,000 to 100,000 BE'ER SHEVA'  
10,000 to 50,000 MA'AN  
2,000 to 10,000 Shawbak  
less than 2,000 Al Jafri

**ROADS**

All weather, hard surface  
Two or more lanes wide  
One lane wide  
All weather, loose or light surface  
Two or more lanes wide  
One lane wide  
Fair or dry weather, loose surface  
Track  
Trail

**RAILROADS**

Normal gauge 1.44 M (48 1/2")  
Narrow gauge

**BOUNDARIES**

International  
Primary administrative  
Armistice  
Building or landmark feature, School  
Church, Mosque, Synagogue  
Wall  
Intermittent lake  
Wadi, Wadi spread  
Well, Spring  
Marsh or swamp, Salsola  
Sand, Distorted surface  
Mudpan  
Cinder cone  
Burial mound  
Cemeteries, Moslem, Christian  
Horizontal control point  
Spot elevation in feet: Normal, Critical

**TERRAIN ELEVATIONS**

HIGHEST elevation 2799 feet located at 35°24'N, 39°29'E  
± following elevation value indicates accuracy is not within 100 feet

**VEGETATION**

Woods, brushwood  
Orchard, vineyard, scrub

**AERODROMES (Military or Civil)**

Field limits with runway pattern  
EDNA-Name  
50-Length of longest runway to nearest hundreds of feet  
-Soft or unimproved  
-Unknown surface  
725-Elevation  
Field limits, with runway pattern unknown  
Field limits and runway pattern unknown

**HELIPORT**

**RADIO AIDS TO NAVIGATION**

VHF OMNI RANGE (VOR) VOR with DME  
VORTAC Other Facilities  
TACAN

**CONTROLLED AIRSPACE**

ADIZ ATLANTIC ADIZ

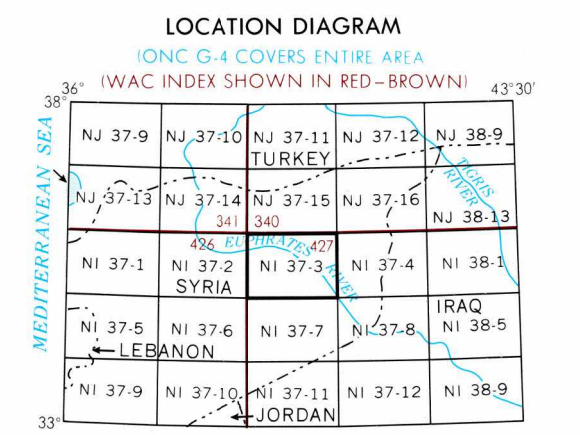
**VISUAL AIDS AND OBSTRUCTIONS**

Obstruction 7108  
1108-Elevation of obstruction top, above sea level  
2591-Elevation of obstruction top, above ground level  
Group obstruction  
Radio facility obstruction  
Power transmission line  
Visual ground sign  
Aero light

**CAUTION**  
AIR INFORMATION CURRENT THROUGH 20 APRIL 1977  
Consult NOTAMS and Flight Information Publications for the latest air information, the DOD Aeronautical Chart Updating Manual or MOD (U.K.) Aeronautical Chart Amendment Document, for other chart revision information.

MAGNETIC VARIATION FOR 1975 IS APPROXIMATELY 3° EASTERLY OVER THE ENTIRE AREA.  
(Annual rate of change—no change)

**ATTENTION**  
THIS CHART CONTAINS MAXIMUM ELEVATION FIGURES (MEF)  
The Maximum Elevation Figures shown in quadrangles bounded by ticked lines of latitude and longitude are represented in THOUSANDS and HUNDREDS of feet above mean sea level. The MEF is based on information available concerning the highest known feature in each quadrangle, including terrain and obstructions (trees, towers, antennas, etc.).  
Example: 12,500 feet **12<sup>5</sup>**

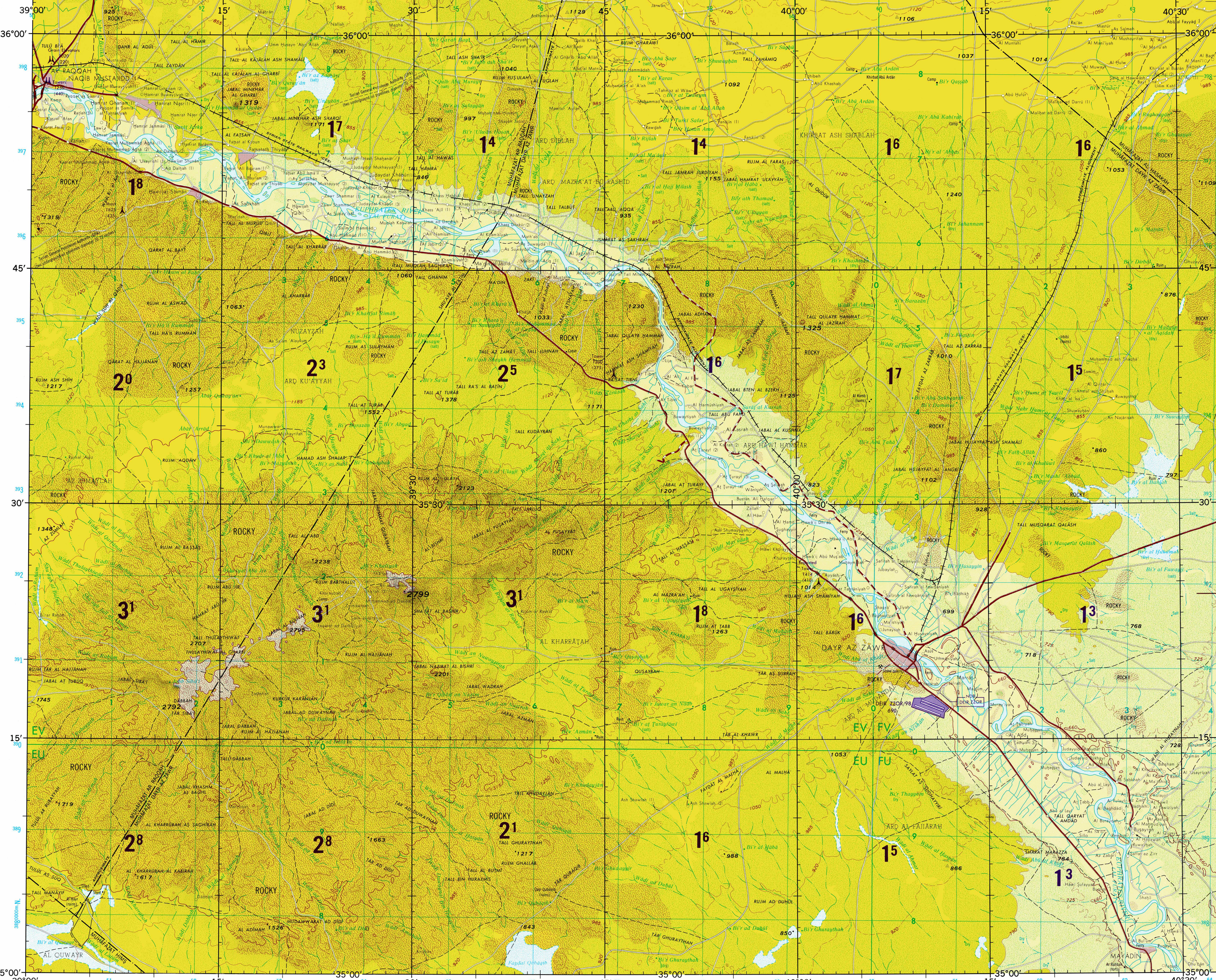


SCALE 1:250,000  
DAYR AZ ZAWR, SYRIA

SERIES 1501 AIR SHEET NI 37-3 EDITION 4  
SERIES 1501 COMPANION SHEET IS EDITION 2

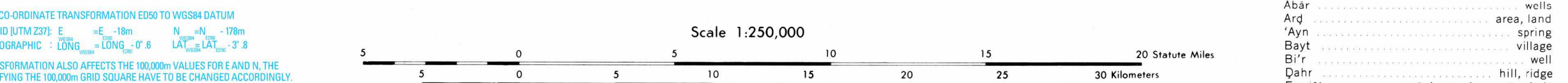
**CONVERSION OF ELEVATIONS**

FEET	METERS	FEET	METERS
1000	305	1000	305
900	274	900	274
800	244	800	244
700	213	700	213
600	183	600	183
500	152	500	152
400	122	400	122
300	91	300	91
200	61	200	61
100	31	100	31
100	31	1000	305



Prepared and published by the Defense Mapping Agency Topographic Center, Washington, D.C. 20315, Completed October 1972. Revised by DMAAC June 1977.

**JOINT OPERATIONS GRAPHIC (AIR)**



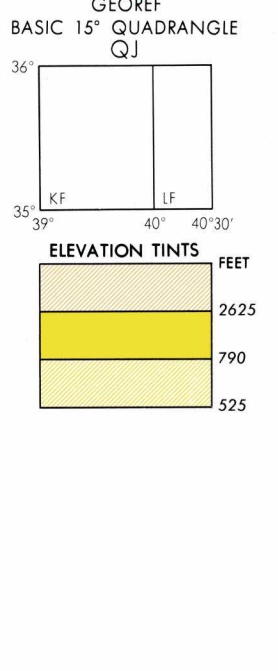
CONTOUR INTERVAL APPROXIMATELY 135 FEET WITH SUPPLEMENTARY CONTOURS AT 70 FOOT INTERVALS

BLUE NUMBERED LINES INDICATE THE 10,000 METER UNIVERSAL TRANSVERSE MERCATOR GRID, ZONE 37, INTERNATIONAL SPHEROID

USERS SHOULD REFER CORRECTIONS, ADDITIONS, AND COMMENTS TO THE NSA OPERATIONAL HELP DESK: 1-800-455-2888 COMMERCIAL 314-263-4884; OR WRITE TO: DIRECTOR, NATIONAL GEOSPATIAL INTELLIGENCE AGENCY, ATTN: ES, MAIL STOP L-88, 4800 SANGAREE ROAD, BETHESDA, MD 20816-5003  
(UK Users: Directorate of Military Survey, Ministry of Defence, London)

**ELEVATIONS IN FEET DEPTHS IN FEET GLOSSARY**

Abar	area, wells
Ayn	spring
Bayt	village
Bir	well
Dahr	hill, ridge
Fayda	wet depression, water hole
Hawiyat	well
Jabal	mountain
Jubb	well
Khirrat	ruin
Muhafazat	primary administrative division
Nahr	primary administrative division
Qarat	crack, stream, wadi
Qarat	hill
Qaryat	village
Qaryat	Fort
Rujm	hill
Shu'ayb	wadi
Tall	hill
Tullu	hills
Wadi	wadi



Reprinted by NSA 11-05 (lithographed by DMAAC 8-77)

**NOTES**

Only obstructions 200 feet or more above ground level are shown.  
The information on obstructions is not necessarily complete.  
THIS GRAPHIC IS NOT AN AUTHORITY ON INTERNATIONAL BOUNDARIES  
On this map a line is considered as being 8 to 16 feet (2.44 to 4.88 meters) in width.  
Names for symbolized populated places are omitted where information is not available or where density of detail does not permit their inclusion.  
The number in parenthesis following a populated place name indicates more than one populated place is so named.  
Prominent walls within unamed populated places are indicated by blue lines labeling the town circles.

NSN 7641014103255  
GSA Ref No: 1501ANI3703  
ED. NO 004