

SERIES 1501 AIR SHEET NI 34-15 EDITION 2  
SERIES 1501 COMPANION SHEET IS EDITION 2

**LEGEND**

**POPULATED PLACES**

- Over 100,000
- 50,000 to 100,000
- 10,000 to 50,000
- 2,000 to 10,000
- Less than 2,000

**ROADS**

- All weather, hard surface
- Two or more lanes wide
- All weather, loose or light surface
- Two or more lanes wide
- All weather, hard surface
- One lane wide
- All weather, loose or light surface
- One lane wide
- Fair or dry weather, loose surface, dirt road
- Cart track, trail
- Footpath, trail

**ROUTE MARKERS**

**BOUNDARIES**

**HORIZONTAL CONTROL POINTS**

**TERRAIN ELEVATIONS**

HIGHEST KNOWN ELEVATION IS **2861** FEET AT 32°38'N, 21°50'E  
± following elevation value indicates accuracy is not within 85 feet.  
Spot elevation: Normal; Critical

**VEGETATION**

**HYDROGRAPHY**

**AERODROMES (Military or Civil)**

**RADIO AIDS TO NAVIGATION**

**CONTROLLED AIRSPACE**

**VISUAL AIDS AND OBSTRUCTIONS**

**CAUTION**  
AIR INFORMATION CURRENT THROUGH 29 SEPTEMBER 1975

Consult NOTAMS and Flight Information Publications for the latest air information; the DOD Aeronautical Chart Updating Manual or MOD (U.K.) Aeronautical Chart Amendment Variation, for other chart revision information.

MAGNETIC VARIATION FOR 1975 IS APPROXIMATELY 30° EASTERLY OVER THE ENTIRE AREA.  
(Annual rate of change 3" increase)

**ATTENTION**  
THIS CHART CONTAINS MAXIMUM ELEVATION FIGURES (MEF)

The Maximum Elevation Figure shown in the area bounded by ticked lines of LATITUDE and LONGITUDE represents the minimum clearance over the highest feature in that area and the highest possible elevation including obstructions (towers, towers, etc.) above mean sea level. The MEF is represented in THOUSANDS and HUNDREDS of feet. In areas of inadequate relief information, the MEF is shown by a note spaced across the area.

EXAMPLE: 12,500 feet **12<sup>5</sup>**

**NOTES**

Only obstructions 200 feet or more above ground level are shown. The information on obstructions is not necessarily complete.

**DISTRIBUTION LIMITED—DESTROY WHEN NO LONGER NEEDED**

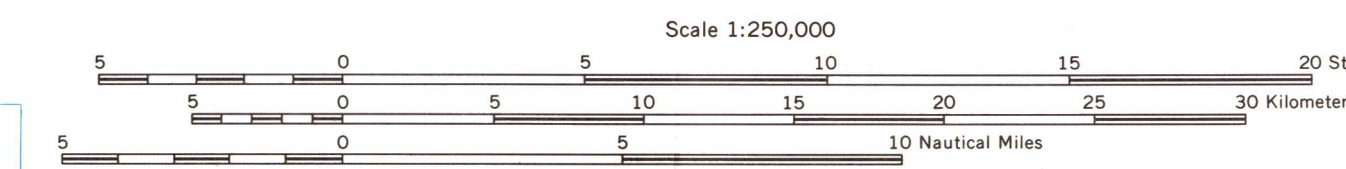
SCALE 1:250,000  
AL BAYDĀ', LIBYA

SERIES 1501 AIR SHEET NI 34-15 EDITION 2  
SERIES 1501 COMPANION SHEET IS EDITION 2



Prepared and published by Defense Mapping Agency Topographic Center, Washington, D.C. 20315. Compiled in 1967. Revised by DMAAC, September 1975.

# JOINT OPERATIONS GRAPHIC (AIR)



CONTOUR INTERVAL APPROXIMATELY 165 FEET WITH SUPPLEMENTARY CONTOURS AT 85 FOOT INTERVALS

**CONVERSION OF ELEVATIONS**

FEET	METERS	FEET	METERS
1000	305	10000	3048
800	274	9000	2743
600	244	8000	2438
400	213	7000	2134
200	183	6000	1829
100	152	5000	1524
0	122	4000	1219
300	91	3000	914
200	61	2000	610
150	46	1500	457
100	31	1000	305

**GLOSSARY**

Abyār	well	Mingār	hill
Aqār	depression	Qabr	tomb, grave
Arqūb	mountain	Qārā	village
Ayn	spring	Qārāt	fort, castle
Bajāt	mud pan	Qāsr	fort, castle
Br	well, cistern	Qūqār	fort
Chāq	depression	Qūqār	fort
Hijāf	cistern	Ra's	hill, mountain
Hawsh	house	Sāniyat	well
Itāq	well	Shā'at	well
Jabbānat	cemetery	Shu'bat	wadi
Jazīrat	island	Sid	shrine
Kānt	island	Tārīq	trail, road
Khalīj	bay	Umī	shrine
Madrasat	school	Wād	wadi
Majīn	cistern	Zāwiyat	religious center
Marsā	cove, harbor		
Ma'tān	well		

**RELIABILITY OF THIS MAP**

Accuracy, as related to control of map:  
Horizontal positions within 45 m.  
Centroids within 80 m.  
Vertical positions within 80 m.  
Latest date of map information: 1963  
Coastal hydrography: 1952-60  
Vegetation: 1960  
All other map features: 1960

Horizontal Datum: European Datum  
Vertical Datum: Mean Sea Level  
Transverse Mercator Projection

**LOCATION DIAGRAM**  
(IWC INDEX SHOWN IN BLUE)  
(IWA INDEX SHOWN IN BROWN)

**ELEVATION TINTS**

FEET	TINT
1970	Lightest tint
985	Light tint
330	Dark tint
0	Black

STOCK NO. 1501AN13415