

SERIES 1501 AIR SHEET NI 31-8 EDITION 2

POPULATED PLACES LIEUX HABITES  
Over 100,000  
50,000 to 100,000  
10,000 to 50,000  
2,000 to 10,000  
Less than 2,000  
Landmark features Pointe repère

ROADS ROUTES  
Dual highway Autoroute  
3 LANES  
TROIS VOIES  
All weather, hard surface, two or more lanes wide  
A toute saison, revêtement dur, deux voies ou plus  
All weather, loose or light surface, two or more lanes wide  
A toute saison, revêtement léger ou à surface meuble, deux voies ou plus  
All weather, hard surface, one lane wide  
A toute saison, revêtement dur, une voie  
All weather, loose or light surface, one lane wide  
A toute saison, revêtement léger ou à surface meuble, une voie  
Fair or dry weather, loose surface  
Par temps sec, à surface meuble  
Coh track, Footpath, trail  
Chemin d'exploitation, Sentier, piste  
International, National, Secondary  
Internationale, Nationale, Secondaire  
Mine, Mosquée  
Santé, lateral dunes  
Sable, Dunes latérales  
Horizontal control point  
Pointe géodésique

RAILROADS CHEMINS DE FER  
Normal gauge 1.44m 4'8.5"  
Single track  
Voie unique  
Multiple track  
Voies multiples  
Vide normale  
Voie étroite

BOUNDARIES LIMITES  
International Limite d'Etat  
First-order administrative division  
De division administrative principale  
VEGETATION VEGETATION  
Woods Bois  
Palm trees, Orchards, Palmiers, Vergers

HYDROGRAPHY HYDROGRAPHIE  
Wells, Spring, Puits, Source  
Depth curves Courbes bathymétriques  
Wrecks Epaves, Submergées  
Rocks Awaish, Sunken  
Limits of Danger, Real  
Limites de danger, Réel  
Wadi, Qued  
Sobkha, Sebkhah  
Foreshore flats Rivages plats

TERRAIN ELEVATIONS ALTITUDES DU TERRAIN  
HIGHEST KNOWN elevation is 4308 feet at 34°49'N, 4°40'E  
Le point culminant connu est 4308 pieds à 34°49'N, 4°40'E  
Spot elevations: normal, critical  
Point coté: normal, critique  
Elevations: normal, critical  
Elevations: normal, critical  
Following elevation value indicates accuracy is not within 100 feet  
Suivant une valeur d'altitude indique une précision inférieure aux 100 pieds

AERODROMES Military or Civil  
AERODROMES Militaire ou Civil  
Field limits with runway pattern  
Limites du champ d'aviation avec réseau des pistes  
EDNA-Name Designation  
50' length of longest runway to nearest hundreds of feet  
Longueur de la piste principale aux cent pieds près  
Soft or unimproved surface  
Surface molle ou non aménagée  
Unknown surface  
Surface inconnue  
725-Elevation Altitude  
725-Elevation Altitude  
Field limits with runway pattern unknown  
Limites du champ avec réseau des pistes inconnu  
Field limits unknown, with runway pattern  
Limites du champ inconnu, avec réseau des pistes  
Field limits and runway pattern unknown  
Limites du champ et réseau des pistes inconnu  
SEAPLANE BASE BASE D'HYDRATIONS  
SEAPLANE EMERGENCY PLAN D'EAU DE SECOURS  
HELIPORT HELIPORT  
RADIO AIDS TO NAVIGATION  
AIDS RADIO A LA NAVIGATION  
VHF OMNI RANGE (VOR)  
RADIOPHARE OMNIDIRECTIONNEL (VOR)  
VORTAC  
TACAN  
OTHERS-AUTRES

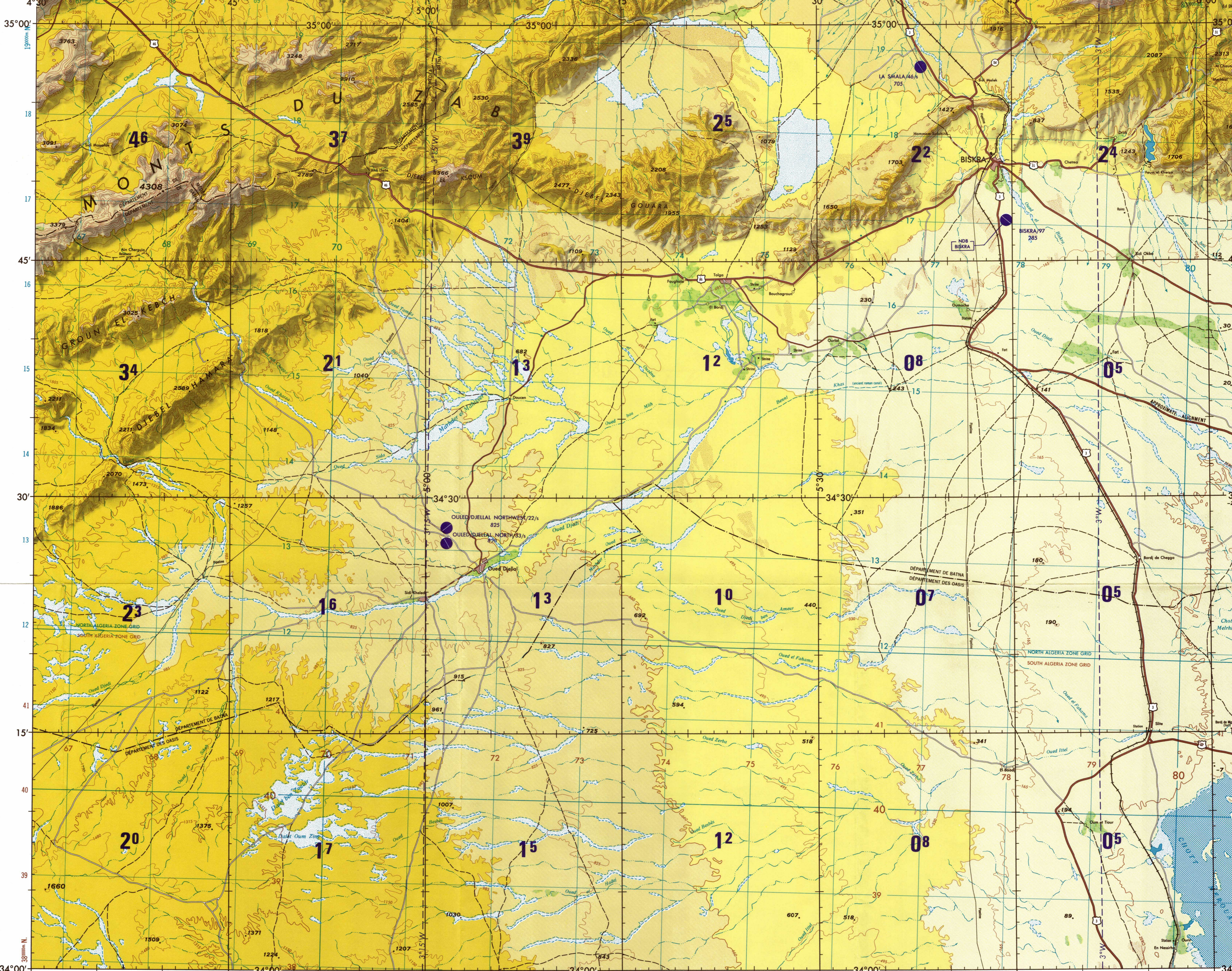
CONTROLLED AIRSPACE  
ESPACE AERIEN CONTROLÉ  
ADIZ  
ATLANTIC ADIZ

VISUAL AIDS AND OBSTRUCTIONS  
AIDS VISUELLES ET OBSTACLES  
Obstruction Obstacle  
1108-Elevation of obstruction top above sea level  
Altitude du sommet de l'obstacle au-dessus du niveau de la mer  
1209-Elevation of obstruction top above ground level  
Hauteur au sommet de l'obstacle au-dessus du niveau du sol  
Group obstruction  
Groupe d'obstacles  
Radio facility obstruction  
Obstacle dû à une installation radio  
Power transmission line  
Ligne de haute tension  
Visual ground sign  
Signe visuel sur sol  
Aero light  
Feu aéronautique

CAUTION  
AIR INFORMATION CURRENT THROUGH  
2 MARCH 1978  
Consult NOTAMS and Flight Information Publications for the latest air information, the DOD Aeronautical Chart Updating Manual or MOD (U, K) Aeronautical Chart Amendment document, for other chart revision information.  
LINES OF EQUAL MAGNETIC VARIATION FOR 1975  
Annual rate of change 5' decrease  
LIGNES D'EGALE DECLINAISON MAGNETIQUE POUR 1975  
Variation annuelle: diminution de 5'

ATTENTION  
THIS CHART CONTAINS MAXIMUM ELEVATION FIGURES (MEF)  
The Maximum Elevation Figures shown in quadrangles bounded by ticked lines of latitude and longitude are represented in THOUSANDS and HUNDREDS of feet above mean sea level. The MEF is based on information available concerning the highest known feature in each quadrangle, including terrain and obstructions (trees, towers, antennas, etc.). In areas of extensive available relief, the MEF is shown by a note spaced across the area.  
EXAMPLE: 12,500 feet  
125

LOCATION DIAGRAM  
(ONC INDEX SHOWN IN BLUE)  
(WAC INDEX SHOWN IN RED/BROWN)



Prepared and published by the Defense Mapping Agency Topographic Center, Washington, D. C. Compiled January 1973.

LIMITED DISTRIBUTION: Distribution authorized to the Department of Defense, U.S. DOD contractors and to U.S. Government Agencies supporting DOD functions (by authority of the Director, Defense Mapping Agency, 30 May 1980). Other requests shall be referred to Headquarters, DMA, ATTN: TMC, STOP A-10, Deseray as "For Official Use Only."

CONVERSION OF ELEVATIONS  
FEET METERS  
1000 305  
900 274  
800 244  
700 213  
600 183  
500 152  
400 122  
300 91  
200 61  
150 46  
100 31

ELEVATIONS IN FEET ALTITUDES EN PIEDS

# JOINT OPERATIONS GRAPHIC (AIR)

Scale 1:250,000  
Scale 1:250,000  
Scale 1:250,000  
Scale 1:250,000

CONTOUR INTERVAL APPROXIMATELY 165 FEET  
EQUIDISTANCE DES COURBES DE NIVEAU 165 PIEDS ENVIRON

BLUE NUMBERED LINES INDICATE THE 10,000 METER FRENCH LAMBERT GRID, NORTH ALGERIA ZONE, CLARKE 1880 SPHEROID.  
LIGNES CHIFFRÉES EN BLEU CORRESPONDENT AU QUADRILLAGE HYPOMÉTRIQUE LAMBERT-NORD ALGÈRE, ELIPSOÏDE DE CLARKE 1880.

BROWN NUMBERED LINES INDICATE THE 10,000 METER FRENCH LAMBERT GRID, SOUTH ALGERIA ZONE, CLARKE 1880 SPHEROID.  
LIGNES CHIFFRÉES EN BROWN CORRESPONDENT AU QUADRILLAGE HYPOMÉTRIQUE LAMBERT-SUD ALGÈRE, ELIPSOÏDE DE CLARKE 1880.

USERS SHOULD REFER TO CORRECTIONS, ADDITIONS AND COMMENTS FOR IMPROVING THIS PRODUCT.

(US Users) Director, Defense Mapping Agency, ATTN: PR, 8613 Lee Highway, Fairfax, VA 22031-2132  
(UK Users) Directorate of Military Survey, Ministry of Defence, London

ELEVATIONS IN FEET ALTITUDES EN PIEDS

Scale 1:250,000  
Scale 1:250,000  
Scale 1:250,000  
Scale 1:250,000

CONTOUR INTERVAL APPROXIMATELY 165 FEET  
EQUIDISTANCE DES COURBES DE NIVEAU 165 PIEDS ENVIRON

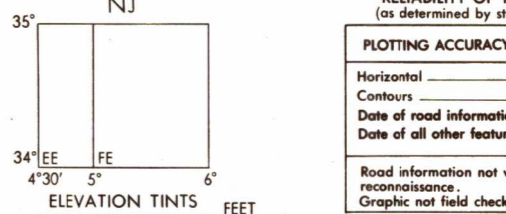
BLUE NUMBERED LINES INDICATE THE 10,000 METER FRENCH LAMBERT GRID, NORTH ALGERIA ZONE, CLARKE 1880 SPHEROID.  
LIGNES CHIFFRÉES EN BLEU CORRESPONDENT AU QUADRILLAGE HYPOMÉTRIQUE LAMBERT-NORD ALGÈRE, ELIPSOÏDE DE CLARKE 1880.

BROWN NUMBERED LINES INDICATE THE 10,000 METER FRENCH LAMBERT GRID, SOUTH ALGERIA ZONE, CLARKE 1880 SPHEROID.  
LIGNES CHIFFRÉES EN BROWN CORRESPONDENT AU QUADRILLAGE HYPOMÉTRIQUE LAMBERT-SUD ALGÈRE, ELIPSOÏDE DE CLARKE 1880.

USERS SHOULD REFER TO CORRECTIONS, ADDITIONS AND COMMENTS FOR IMPROVING THIS PRODUCT.

(US Users) Director, Defense Mapping Agency, ATTN: PR, 8613 Lee Highway, Fairfax, VA 22031-2132  
(UK Users) Directorate of Military Survey, Ministry of Defence, London

GEOREF BASIC 15° QUADRANGLE NJ



RELIABILITY OF THIS GRAPHIC  
(As determined by visual inspection)  
NOTING ACCURACY ASSURANCE  
Horizontal: within 750 ft  
Vertical: within 80 ft  
Contours: within 80 ft  
Date of road information: 1971  
Date of all other features: 1969

Horizontal Datum: World Datum  
Vertical Datum: Mean Sea Level  
Transverse Mercator Projection

REPRESENTATION OF INTERNATIONAL BOUNDARIES ON THIS GRAPHIC IS NOT NECESSARILY AUTHORITY. LA REPRESENTATION DE LIMITES D'ETAT SUR CE GRAPHIQUE N'EST PAS NECESSAIREMENT AUTHORITY.

CAUTION: Power transmission line information on this graphic is incomplete. AVIS: Les renseignements de cette carte sur les lignes de transport de force sont incomplets.

DMA STOCK NO. 1501ANI3108  
ED NO 002