

SERIES 1501 AIR  
SHEET NI 31-6  
EDITION 2  
SERIES 1501 COMPANION SHEET IS EDITION 2

POPULATED PLACES LIEUX HABITÉS

Over 100,000  
50,000 to 100,000  
10,000 to 50,000  
2,000 to 10,000  
Less than 2,000

ALGER  
SAFI  
SETTAT

ROADS ROUTES

Dual highway Autoroute  
All weather, hard surface, two or more lanes wide  
A route saison, revêtement dur, deux voies ou plus  
All weather, loose or light surface, two or more lanes wide  
A route saison, revêtement léger ou à surface meuble, deux voies ou plus  
All weather, hard surface, one lane wide  
A route saison, revêtement dur, une voie  
All weather, loose or light surface, one lane wide  
A route saison, revêtement léger ou à surface meuble, une voie  
For or dry weather, loose surface  
Par temps sec, à surface meuble  
Carr track, Footpath, trail  
Chemin de exploitation, Sentier, piste  
International, National, Secondary  
Internationale, Nationale, Secondaire  
Mine, Mosque  
Mine, Mosquée  
Sand, laterals dunes  
Sable, Dunes latérales  
Horizontal control point  
Pointe géodésique

RAILROADS CHEMINS DE FER

Single track  
Voie unique  
Multiple track  
Voies multiples  
Normal gauge 1.44m (4'8.5")  
Voie normale  
Narrow gauge Voie étroite

BOUNDARIES LIMITES

International Limit of State  
Frontière administrative internationale  
First-order administrative division  
De division administrative principale

VEGETATION VÉGÉTATION

Woods Bois  
Palm trees, Orchards, Palmyras, Vergers

HYDROGRAPHY HYDROGRAPHIE

Wells, Spring, Puits, Source  
Depth curves Courbes bathymétriques  
Wrecks, Exposed, Submerged  
Épaves, Vissibles, Submergées  
Rocks, Awash, Sunken  
Rochers, À fleur d'eau, Submergés  
Limits of Danger, Reef  
Limite de danger, Récif  
Wadi, Oued  
Sakha, Sebkh  
Fossiliferous flats, Rivages plats

TERRAIN ELEVATIONS ALTITUDES DU TERRAIN

HIGHEST KNOWN elevation 5643 feet at 34°02'N, 1°49'E  
Le point culminant connu est 5643 pieds à 34°02'N, 1°49'E  
Spot elevations, normal, critical  
Point coté: normal, critique  
Following elevation value indicates accuracy is not within 100 feet  
La valeur d'altitude indique une précision inférieure aux 100 pieds

AERODROMES (Military or Civil) EDNA/50's

Field limits with runway pattern  
Limites du champ d'aviation, avec réseau des pistes  
EDNA-Name Désignation  
50'-Length of longest runway to nearest hundreds of feet  
Longueur de la piste principale aux cent plus près  
S-Soft or unimproved surface Surface molle ou non aménagée  
U-Unknown surface Surface inconnue  
725-Elevation Altitude  
Field limits with runway pattern unknown  
Limites du champ avec réseau des pistes inconnu  
Field limits unknown, with runway pattern  
Limites du champ inconnu, avec réseau des pistes  
Field limits and runway pattern unknown  
Limites du champ et réseau des pistes inconnu

SEAPLANE BASE BASE D'HYDRATIONS

SEAPLANE EMERGENCY PLAN D'EAU DE SECOURS

HELIPORT HELIPORT

RADIO AIDS TO NAVIGATION AIDES RADIO A LA NAVIGATION

VHF OMNI RANGE (VOR)  
RADIOPHARE OMNIDIRECTIONNEL VHF (VOR)  
VORTAC VOR with DME VOR avec DME  
TACAN OTHERS-AUTRES

CONTROLLED AIRSPACE ESPACE AÉRIEN CONTRÔLÉ

ADIZ ATLANTIC ADIZ

VISUAL AIDS AND OBSTRUCTIONS AIDES VISUELLES ET OBSTACLES

Obstruction Obstacle  
1108-Elevation of obstruction top above sea level  
Altitude du sommet de l'obstacle au-dessus du niveau de la mer  
2591-Elevation of obstruction top above ground level  
Hauteur du sommet de l'obstacle au-dessus du niveau du sol  
Group of obstructions  
Groupe d'obstacles  
Radio facility obstruction  
Obstacle dû à une installation radio  
Power transmission line  
Ligne de haute tension  
Visual ground sign  
Signal visuel sur sol  
Aero light  
Feu aéronautique

CAUTION AIR INFORMATION CURRENT THROUGH 5 FEBRUARY 1978

Consult NOTAMS and Flight Information Publications for the latest air information; the DOD Aeronautical Chart Updating Manual or MOD (U.K.) Aeronautical Chart Amendment document, for other chart revision information.

LINES OF EQUAL MAGNETIC VARIATION FOR 1975

LIGNES D'ÉGALÉ DÉCLINAISON MAGNÉTIQUE POUR L'ANNÉE 1975

THIS CHART CONTAINS MAXIMUM ELEVATION FIGURES (MEF)

The Maximum Elevation Figures shown in quadrangles bounded by ticked lines of latitude and longitude are represented in THOUSANDS and HUNDREDS of feet above mean sea level. The MEF is based on information available concerning the highest known features in each quadrangle, including terrain and obstructions (trees, towers, antennas, etc.). In areas of extensive unreliable relief, the MEF is shown by a wide spaced across the area.  
EXEMPLE: 12,500 feet 125

LOCATION DIAGRAM (IWC INDEX SHOWN IN BROWN)

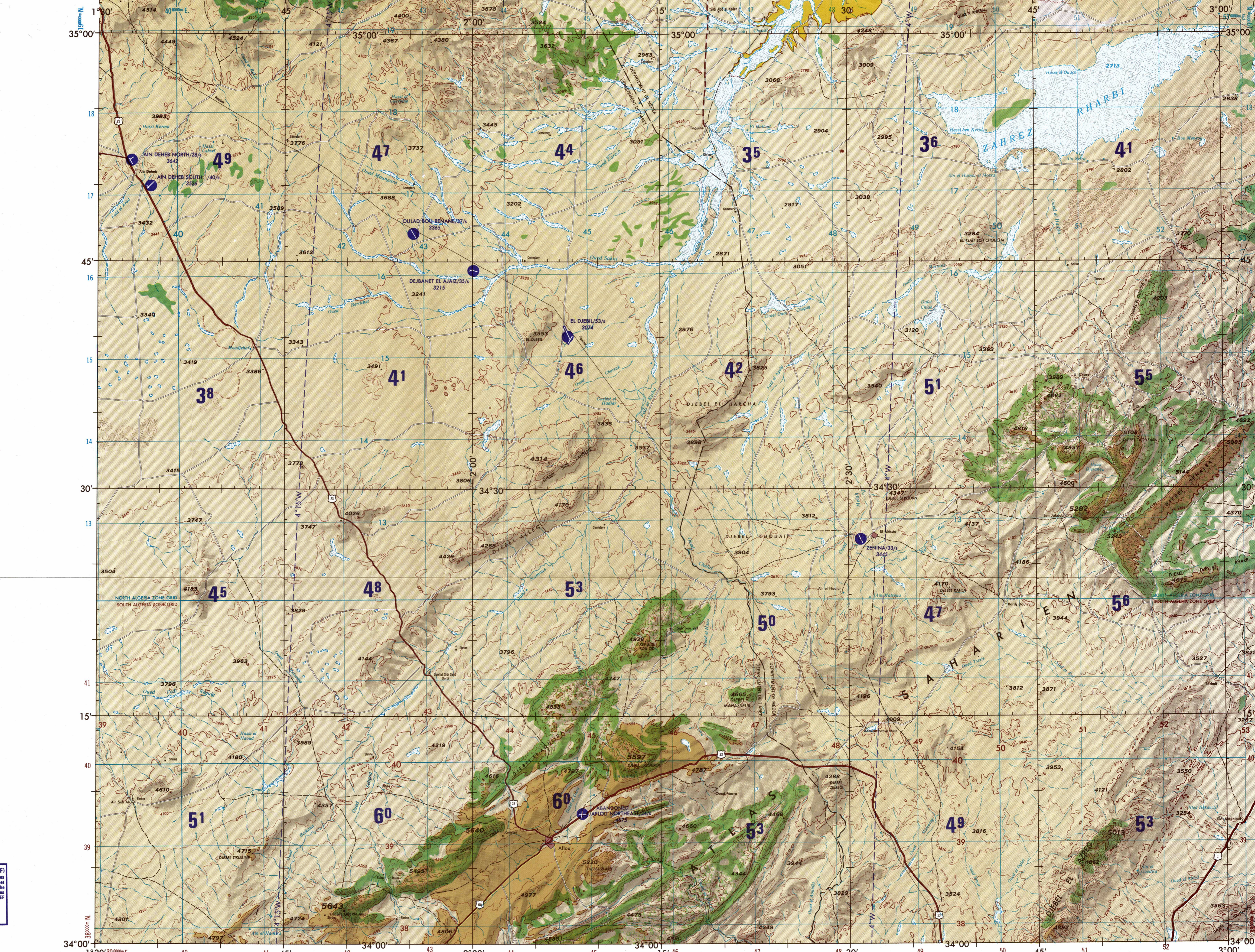
NORTH AFRICA			
NI 31-13	NI 31-14	NI 31-15	NI 31-16
NI 31-12	NI 31-13	NI 31-14	NI 31-15
NI 30-11	NI 31-12	NI 31-13	NI 31-14
NI 30-10	NI 31-11	NI 31-12	NI 31-13
NI 30-09	NI 31-10	NI 31-11	NI 31-12
NI 30-08	NI 31-09	NI 31-10	NI 31-11
NI 30-07	NI 31-08	NI 31-09	NI 31-10
NI 30-06	NI 31-07	NI 31-08	NI 31-09
NI 30-05	NI 31-06	NI 31-07	NI 31-08
NI 30-04	NI 31-05	NI 31-06	NI 31-07
NI 30-03	NI 31-04	NI 31-05	NI 31-06
NI 30-02	NI 31-03	NI 31-04	NI 31-05
NI 30-01	NI 31-02	NI 31-03	NI 31-04
NI 30-00	NI 31-01	NI 31-02	NI 31-03

CONVERSION OF ELEVATIONS

FEET	METERS	FEET	METERS
1000	305	10000	3048
900	274	9000	2743
800	244	8000	2438
700	213	7000	2134
600	183	6000	1829
500	152	5000	1524
400	122	4000	1219
300	91	3000	914
200	61	2000	610
100	31	1500	457
0	0	1000	305

SCALE 1:250,000 AFLOU, ALGERIA

SERIES 1501 AIR  
SHEET NI 31-6  
EDITION 2  
SERIES 1501 COMPANION SHEET IS EDITION 2



Prepared and published by the Defense Mapping Agency Topographic Center, Washington, D. C. Compiled January 1973



ELEVATIONS IN FEET ALTITUDES EN PIEDS

JOINT OPERATIONS GRAPHIC (AIR)

Scale 1:250,000  
Scale 1:250,000  
EQUIDISTANCE DES COURBES DE NIVEAU 165 PIEDS ENVIRON

CONTOUR INTERVAL APPROXIMATELY 165 FEET  
ÉQUIDISTANCE DES COURBES DE NIVEAU 165 PIEDS ENVIRON

BLUE NUMBERED LINES INDICATE THE 10,000 METER FRENCH LAMBERT GRID, NORTH ALGERIA ZONE, CLARKE 1880 SPHEROID  
LES LIGNES CHIFFRÉES EN BLEU CORRESPONDENT AU QUADRILLAGE MATHÉMATIQUE LAMBERT-NORD ALGÉRIE, ELLIPSOÏDE DE CLARKE 1880.

BROWN NUMBERED LINES INDICATE THE 10,000 METER FRENCH LAMBERT GRID, SOUTH ALGERIA ZONE, CLARKE 1880 SPHEROID  
LES LIGNES CHIFFRÉES EN MARRON CORRESPONDENT AU QUADRILLAGE MATHÉMATIQUE LAMBERT-SUD ALGÉRIE, ELLIPSOÏDE DE CLARKE 1880.

USERS SHOULD REFER TO THE NATIONAL OPERATIONAL HELP DESK: 1 800 452-6266, COMMERCIAL: 202-462-4000, OR WRITE TO: DIRECTOR, NATIONAL IMAGERY AND MAPPING AGENCY, ATTN: ES, MAIL STOP L-88, 4600 SANGHAMORE ROAD, BETHESDA, MD 20816-5002

SIMPLE REFERENCE	NI 31-6	45	9
SIMPLE REFERENCE	NI 31-6/45816	41	6

ELEVATIONS IN FEET ALTITUDES EN PIEDS

SCALE 1:250,000

Scale 1:250,000  
Scale 1:250,000  
EQUIDISTANCE DES COURBES DE NIVEAU 165 PIEDS ENVIRON

CONTOUR INTERVAL APPROXIMATELY 165 FEET  
ÉQUIDISTANCE DES COURBES DE NIVEAU 165 PIEDS ENVIRON

BLUE NUMBERED LINES INDICATE THE 10,000 METER FRENCH LAMBERT GRID, NORTH ALGERIA ZONE, CLARKE 1880 SPHEROID  
LES LIGNES CHIFFRÉES EN BLEU CORRESPONDENT AU QUADRILLAGE MATHÉMATIQUE LAMBERT-NORD ALGÉRIE, ELLIPSOÏDE DE CLARKE 1880.

BROWN NUMBERED LINES INDICATE THE 10,000 METER FRENCH LAMBERT GRID, SOUTH ALGERIA ZONE, CLARKE 1880 SPHEROID  
LES LIGNES CHIFFRÉES EN MARRON CORRESPONDENT AU QUADRILLAGE MATHÉMATIQUE LAMBERT-SUD ALGÉRIE, ELLIPSOÏDE DE CLARKE 1880.

USERS SHOULD REFER TO THE NATIONAL OPERATIONAL HELP DESK: 1 800 452-6266, COMMERCIAL: 202-462-4000, OR WRITE TO: DIRECTOR, NATIONAL IMAGERY AND MAPPING AGENCY, ATTN: ES, MAIL STOP L-88, 4600 SANGHAMORE ROAD, BETHESDA, MD 20816-5002

SIMPLE REFERENCE	NI 31-6	45	9
SIMPLE REFERENCE	NI 31-6/45816	41	6

ELEVATIONS IN FEET ALTITUDES EN PIEDS

SCALE 1:250,000

Scale 1:250,000  
Scale 1:250,000  
EQUIDISTANCE DES COURBES DE NIVEAU 165 PIEDS ENVIRON

CONTOUR INTERVAL APPROXIMATELY 165 FEET  
ÉQUIDISTANCE DES COURBES DE NIVEAU 165 PIEDS ENVIRON

BLUE NUMBERED LINES INDICATE THE 10,000 METER FRENCH LAMBERT GRID, NORTH ALGERIA ZONE, CLARKE 1880 SPHEROID  
LES LIGNES CHIFFRÉES EN BLEU CORRESPONDENT AU QUADRILLAGE MATHÉMATIQUE LAMBERT-NORD ALGÉRIE, ELLIPSOÏDE DE CLARKE 1880.

BROWN NUMBERED LINES INDICATE THE 10,000 METER FRENCH LAMBERT GRID, SOUTH ALGERIA ZONE, CLARKE 1880 SPHEROID  
LES LIGNES CHIFFRÉES EN MARRON CORRESPONDENT AU QUADRILLAGE MATHÉMATIQUE LAMBERT-SUD ALGÉRIE, ELLIPSOÏDE DE CLARKE 1880.

USERS SHOULD REFER TO THE NATIONAL OPERATIONAL HELP DESK: 1 800 452-6266, COMMERCIAL: 202-462-4000, OR WRITE TO: DIRECTOR, NATIONAL IMAGERY AND MAPPING AGENCY, ATTN: ES, MAIL STOP L-88, 4600 SANGHAMORE ROAD, BETHESDA, MD 20816-5002

SIMPLE REFERENCE	NI 31-6	45	9
SIMPLE REFERENCE	NI 31-6/45816	41	6

ELEVATION TINTS

ELEVATION TINTS	FEET
Lightest tint	4595
Light tint	2625
Dark tint	985

RELIABILITY OF THIS GRAPHIC

(As determined by standard practice)  
Horizontal: within 80 ft  
Contour: within 80 ft  
Date of information: 1958  
Road information not verified by: none  
Graphic not field checked

Horizontal Datum: World Datum  
Vertical Datum: Mean Sea Level  
Transverse Mercator Projection

Reliability of this graphic is not necessarily authoritative. The representation of international boundaries on this graphic is not necessarily authoritative. The representation of limits of state or civil geographic is not necessarily authoritative.

Horizontal Datum: World Datum  
Vertical Datum: Mean Sea Level  
Transverse Mercator Projection

NSN 7641014101353  
NIMA REF. NO. 1501ANI3106