

SERIES 1501 AIR SHEET NI 30-7 EDITION 2 3

POPULATED PLACES LIEUX HABITÉS

Over 100,000 ALGER
50,000 to 100,000 SAFI
10,000 to 50,000 SETTAT
2,000 to 10,000 Tiflet
Less than 2,000 Other

ROADS ROUTES

Dual highway Autoroute... 3 LINES
Trois voies

All weather, hard surface, two or more lanes wide.
A route saison, revêtement dur, deux voies ou plus
All weather, loose or light surface, two or more lanes wide.
A route saison, revêtement léger ou à surface meuble, deux voies ou plus

RAILROADS CHEMINS DE FER

Normal gauge 1446 (48.5") Single track Voie simple
Voie normale

BOUNDARIES LIMITES

International Limit of State
First order administrative division

VEGETATION VÉGÉTATION

Woods Bois

HYDROGRAPHY HYDROGRAPHIE

Well, Spring Puit, Source

TERRAIN ELEVATIONS ALTITUDES DU TERRAIN

HIGHEST KNOWN elevation is 6040 feet at 34°29'N, 1°32'W
Le point culminant connu est 6040 pieds à 34°29'N, 1°32'W

AERODROMES MILITARY OR CIVIL

Field limits with runway pattern
Limites du champ d'aviation avec réseau des pistes

CONTROLLED AIRSPACE

ESPACE AÉRIEN CONTRÔLÉ

RADIO AIDS TO NAVIGATION

VHF OMNI RANGE (VOR)
RADIOPHARE OMNIDIRECTIONNEL (VHF) (VOR)

CONTROLLED AIRSPACE

ESPACE AÉRIEN CONTRÔLÉ

CAUTION

AIR INFORMATION CURRENT THROUGH 12 DECEMBER 1977

CAUTION

AIR INFORMATION CURRENT THROUGH 12 DECEMBER 1977

ATTENTION

THIS CHART CONTAINS MAXIMUM ELEVATION FIGURES (MEF)

LOCATION DIAGRAM

IONC G-1 COVERS ENTIRE AREA

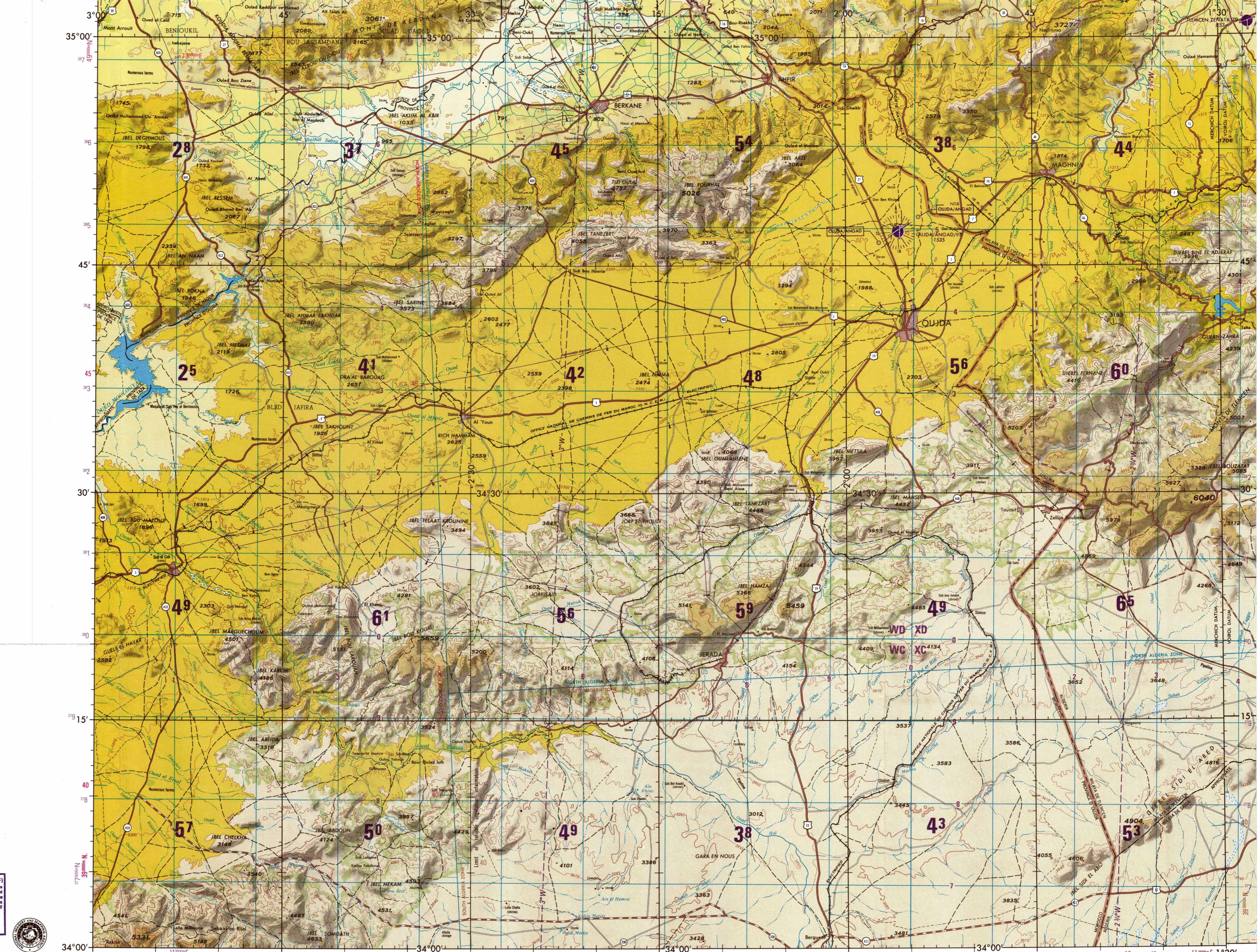
CONVERSION OF ELEVATIONS

FEET	METERS	FEET	METERS
1000	305	10000	3048
900	274	9000	2743
800	244	8000	2438
700	213	7000	2134
600	183	6000	1829
500	152	5000	1524
400	122	4000	1219
300	91	3000	914
200	61	2000	610
100	31	1000	305

SCALE 1:250,000

OUJDA, MOROCCO; ALGERIA

SERIES 1501 AIR SHEET NI 30-7 EDITION 2 3



JOINT OPERATIONS GRAPHIC (AIR)

Scale 1:250,000

20 Statute Miles / 30 Nautical Miles

CONTOUR INTERVAL APPROXIMATELY 330 FEET

EQUIDISTANCE DES COURBES DE NIVEAU 330 PIED ENVIRON

BLUE NUMBERED TICKS INDICATE THE 10,000 METRE FRENCH LAMBERT GRID, NORTH ALGERIA ZONE, CLARKE 1880 SPHEROID

LES AMORCES CHIFFRÉS EN BLEU CORRESPONDENT AU QUADRILLAGE MYRIAMÉTRIQUE LAMBERT-NORD ALGÈRE, ELLIPSOÏDE DE CLARKE 1880

RED NUMBERED TICKS INDICATE THE 10,000 METRE FRENCH LAMBERT GRID, NORTH MOROCCO ZONE, CLARKE 1880 SPHEROID

LES AMORCES CHIFFRÉS EN ROUGE CORRESPONDENT AU QUADRILLAGE MYRIAMÉTRIQUE LAMBERT-NORD MAROC, ELLIPSOÏDE DE CLARKE 1880

BROWN NUMBERED TICKS INDICATE THE 10,000 METRE FRENCH LAMBERT GRID, SOUTH ALGERIA ZONE, CLARKE 1880 SPHEROID

LES AMORCES CHIFFRÉS EN BRUN CORRESPONDENT AU QUADRILLAGE MYRIAMÉTRIQUE LAMBERT-SUD ALGÈRE, ELLIPSOÏDE DE CLARKE 1880

PURPLE NUMBERED TICKS INDICATE THE 10,000 METRE UNIVERSAL TRANSVERSE MERCATOR GRID, ZONE 30 WEST SPHEROID

LES LIGNES CHIFFRÉS EN VIOLETTE CORRESPONDENT AU QUADRILLAGE MYRIAMÉTRIQUE UTM WGS 84

USERS SHOULD REFER TO THE ICAO OPERATIONAL PROCEDURE (OPS) 1400-400-000, COMMERCIAL 34-25-4004, OR WRITE TO THE DIRECTOR, NATIONAL MAPS AND MAPPING AGENCY, ATTN: 15, MAIL STOP 1-85, 4600 SANDWATER ROAD, BETHESDA, MD 20815-5005

ELEVATIONS IN FEET / ALTITUDES EN PIEDS

GLOSSARY - GLOSSAIRE

Ain	source	spring
Asif	ruisseau	stream
Bled	étendue	area
Chabet	ruisseau	stream
Dar	village	village
Djebel	montagne	mountain
Dra'al	colline	hill
Gera	colline	hill
Jail	colline	hill
Guern	colline	hill
Jorf	colline	hill
Koudia	colline	hill
Mouta	montagne	mountain
Ojlat	puits	well
Oued	wadi	stream
Province	province	first-order administrative division
Sebah	wadi	stream
Taf	coll	pass
Wilaya	province	first-order administrative division

ELEVATION TINTS

4595
3625
985
640
330
85

RELIABILITY OF THIS GRAPHIC (as determined by standard practices)

PLOTTING ACCURACY 90% ASSURANCE

Horizontal: within 400 ft.
Vertical: within 165 ft.
Date of information: 1977

NOTES - NOTES

No obstruction 200 feet or more above ground level are known to exist in this area.

On ne connaît pas dans cette région l'existence d'aucun obstacle dont le hauteur dépasse les 200 pieds hors sol.

A line is generally considered as being a minimum of 2.5 metres (8 feet) in width.

Une voie est généralement définie comme ayant une largeur minima 2,5 mètres (8 pieds).

THE REPRESENTATION OF INTERNATIONAL BOUNDARIES ON THIS GRAPHIC IS NOT NECESSARILY AUTHORITY.

LA REPRÉSENTATION DE LIMITES D'ÉTAT SUR CE GRA PHIQUE N'EST PAS NÉCESSAIREMENT AUTHORITY.

CONTOUR INTERVAL APPROXIMATELY 330 FEET

USE THIS BOX FOR GIVING REFERENCES ON THE UTM GRID

SAMPLE 1000 METRE REFERENCE

30	31	32
3146		
3147		
3148		
3149		
3150		

USE THIS BOX FOR GIVING REFERENCES ON THE UTM GRID

SAMPLE 1000 METRE REFERENCE

30	31	32
3146		
3147		
3148		
3149		
3150		

CO-ORDINATE CONVERSION LOCAL DATUM (VOIROU) TO WGS 84

Geographic: Decrease 2° 0' Latitude; Increase 9° 2' Longitude.

CO-ORDINATE CONVERSION LOCAL DATUM (MERCHECH) TO WGS 84

Geographic: Decrease 9° 8' Latitude; Decrease 9° 8' Longitude.

NSN 7641014101331

NSM REF. NO. 1501ANI3007