

SERIES 1501 AIR SHEET NH 42-8 EDITION 2

SERIES 1501 COMPANION SHEET IS EDITION 3

POPULATED PLACES

- First Importance ISLAMĀBĀD
- Second Importance QUETTA
- Third Importance MĀNWĀLĪ
- Fourth Importance Fatehjang
- Fifth Importance
- District headquarters Gujrat

ROADS

- Dual highway 4 LANES DUAL
- All weather, hard surface More than two lanes wide 2 LANES
- Two lanes wide 2 LANES
- One lane wide 2 LANES
- All weather, loose or light surface More than two lanes wide 2 LANES
- Two lanes wide 2 LANES
- One lane wide 2 LANES
- Fair or dry weather, loose surface 2 LANES
- Cart track 2 LANES
- Footpath, trail 2 LANES
- Route marker 2 LANES

RAILROADS

- Normal gauge, 1.68m (5'6") Single track Multiple track
- Narrow gauge Single track Multiple track

BOUNDARIES

- International
- First-order administrative division

OTHER FEATURES

- Area Name
- Hut, kraal, landmark feature
- School, Church, Mosque, Muslim shrine
- Well (other than water), Tank
- Well: Perennial, intermittent
- Spring, fountain or cistern
- Underground aqueduct with shaft, Sakha (Kawi)
- Well: Intermittent lake
- Marsh or swamp; Land subject to inundation
- Mount, Level
- Disturbed surface: Sand
- Dunes: Rippled, Crescent, Lateral
- Horizontal control point

VEGETATION

- Wooded: Scattered trees
- Orchard, plantations, vineyards

TERRAIN ELEVATIONS

- Spot elevation: normal, critical
- HIGHEST KNOWN ELEVATION is 2375 feet at the following coordinates: 30°30'N, 70°30'E
- Grid: X04475
- Following elevation value indicates accuracy is not within 100 feet

AERODROMES (Military or Civil)

- EDNA/50's 725
- Runway pattern known
- EDNA-Name
- 50-Length of longest runway to nearest hundreds of feet
- S-Soft or unimproved surface
- U-Unknown surface
- 725-Elevation

Runway pattern unknown

HELIPORT/HELIPAD

- HELIPORT/HELIPAD AT HOSPITAL

RADIO AIDS TO NAVIGATION

- VHF (OMNI RANGE (VOR)
- VORTAC
- TACAN
- VOR with DME
- Other facilities

RADIO FACILITIES

- RADIO RANGE LF/MF
- MULTIPLE RADIO FACILITIES

CONTROLLED AIRSPACE

- ADIZ ATLANTIC ADIZ

VISUAL AIDS AND OBSTRUCTIONS

- Obstruction 1108
- 1108-Elevation of obstruction top, above sea level (1230)
- (259)-Elevation of obstruction top, above ground level
- Group obstruction
- Radio facility obstruction
- Power transmission line
- Visual ground sign
- Aero light: Marine light

CAUTION

AIR INFORMATION CURRENT THROUGH 30 MARCH 1989

Consult NOTAMS and Flight Information Publications for the latest air information; the DOD Aeronautical Chart Updating Manual or MOD (U.K.) Aeronautical Chart Amendment document, for other chart revision information.

MAGNETIC VARIATION FOR 1985 IS APPROXIMATELY 1° EAST OVER THE ENTIRE AREA.

(Annual rate of change 2' increase)

ATTENTION

THIS CHART CONTAINS MAXIMUM ELEVATION FIGURES (MEF)

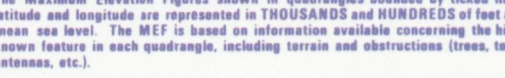
The Maximum Elevation Figures shown in quadrangles bounded by ticked lines of latitude and longitude are represented in THOUSANDS and HUNDREDS of feet above mean sea level. The MEF is based on information available concerning the highest known feature in each quadrangle, including terrain and obstructions (towers, towers, antennas, etc.).

EXAMPLE: 12300 feet

125

LOCATION DIAGRAM

(GRID INDEX SHOWN IN BLUE) (MAG. INDEX SHOWN IN RED/BROWN)



Prepared and published by the Defense Mapping Agency Hydrographic/Topographic Center, Washington, D.C. Compiled in January 1988.

CAUTION

Vertical obstructions, including antennas, have been extracted from the most reliable sources available. However, there is no assurance that all are shown, or that their locations or heights are exact.

CONVERSION OF ELEVATIONS

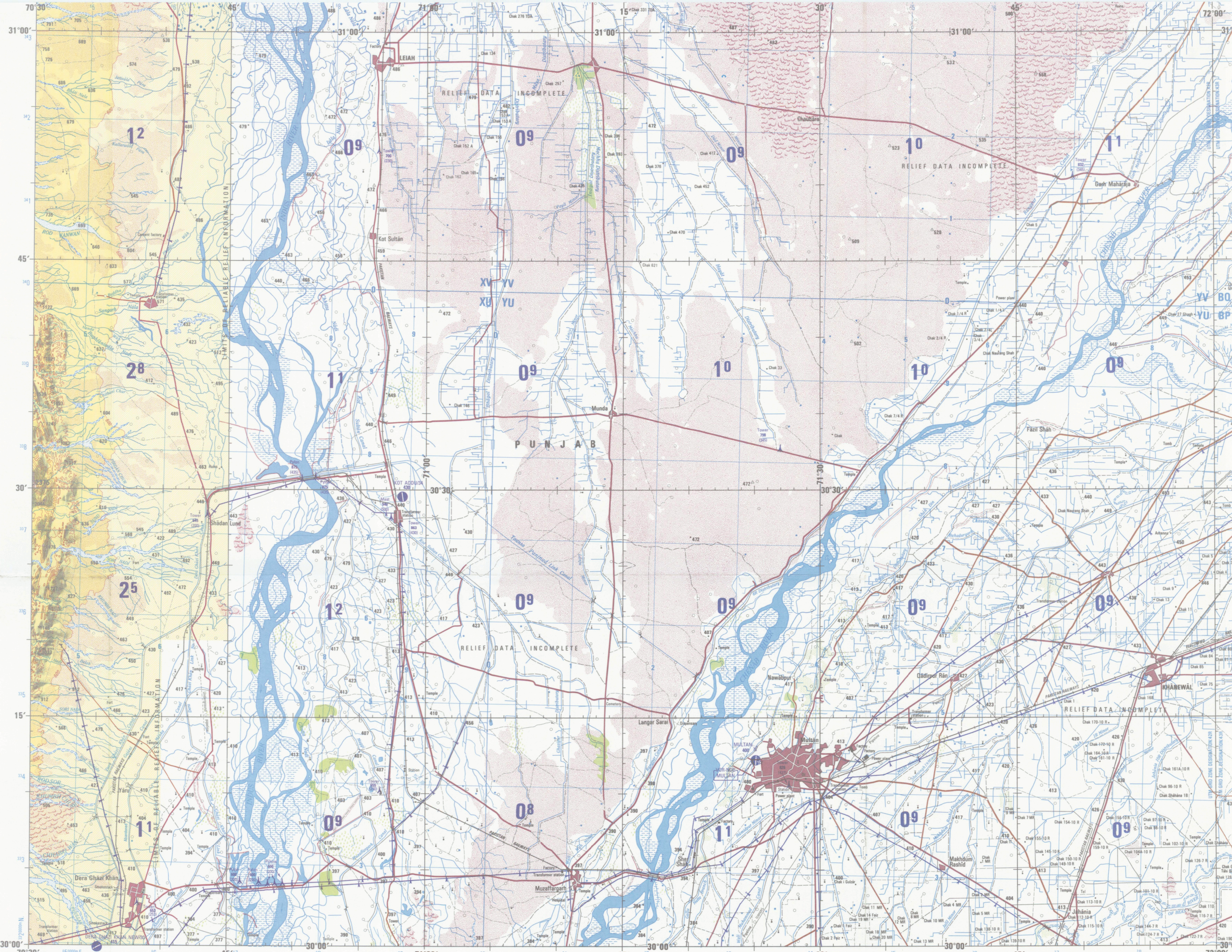
FEET	METERS
1000	305
800	244
600	183
400	122
200	61
100	31

SCALE 1:250,000

MULTAN, PAKISTAN

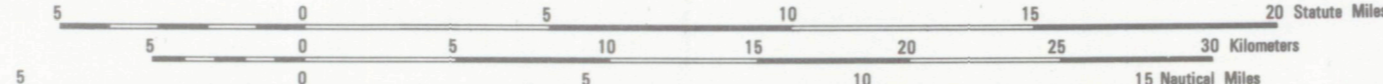
SERIES 1501 AIR SHEET NH 42-8 EDITION 2

SERIES 1501 COMPANION SHEET IS EDITION 3



JOINT OPERATIONS GRAPHIC (AIR)

SCALE 1:250,000



CONTOUR INTERVAL 200 FEET

COORDINATE CONVERSION WGS TO INDIAN

Geographic: Add 0.8" Long, Add 0.5" Lat.

EXAMPLE: 42R

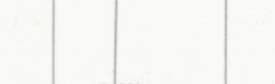
42R

BLUE NUMBERED LINES INDICATE THE 10,000 METER UNIVERSAL TRANSVERSE MERCATOR GRID, ZONE 42, WORLD GEODETIC SYSTEM ELLIPSOID

USERS SHOULD REFER CORRECTIONS, ADDITIONS, AND COMMENTS TO THE NIMA CUSTOMER HELP DESK: 1-800-455-0899; COMMERCIAL 314-260-5032; DSN 490-5032; OR WRITE TO: DIRECTOR, NATIONAL IMAGERY AND MAPPING AGENCY, ATTN: CDD, MAIL STOP P-37, 4600 SANGHVI ROAD, BETHESDA, MD 20815-5003

GEOREF

BASIC 15° QUADRANGLE



LA MA

31° 70°30' 71° 72°

NOTES

Powerlines are shown except within populated place tints. Other obstructions are shown if they are 200 feet or more above ground level. See caution note.

THE REPRESENTATION OF BOUNDARIES IS NOT NECESSARILY AUTHORITATIVE.

On this graphic a lane is generally considered being 8 feet (2.44 meters) in width.

Names for symbolized populated places are omitted where information is not available or where density of detail does not permit their inclusion.

At the Tamsa Barrage (30°31'N, 70°51'E) two 435 foot high towers carry the powerlines across the span of 4,288 feet over the Indus River.

RELIABILITY OF THIS GRAPHIC

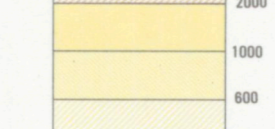
Compiled from best available source materials

Horizontal Datum: World Geodetic System

Vertical Datum: Mean Sea Level

Transverse Mercator Projection

ELEVATION TINTS



GLOSSARY

- Basin
- Chak
- Char
- Chowk
- Chuk
- Kor
- Nadi
- Nala
- Wah
- hamlet
- farm, estate
- stream
- hamlet
- village
- stream
- stream

NSN 7641014102550

NIMA REF. NO. 1501ANH4208

ED. NO. 002