

SERIES 1501 AIR SHEET NH 39-12 EDITION 3

POPULATED PLACES

- Over 100,000: **TEHRAN**
- 50,000 to 100,000: **KHERMAN**
- 2,000 to 50,000: **KHERMANSHAR**
- Less than 2,000: **Farinān**

ROADS

- Dual highway: **4 LANES**
- All weather, hard surface: **4 LANES**
- More than two lanes wide: **4 LANES**
- Two lanes wide: **3 LANES**
- One lane wide: **3 LANES**

RAILROADS

- Normal gauge single track 4'8 1/2" (1.44m): **4 LANES**
- Narrow gauge: **3 LANES**

BOUNDARIES

- International: **4 LANES**
- First-order administrative division: **3 LANES**

OTHER FEATURES

- Area name: **ROAD**
- Mine or quarry: **ROAD**
- Landmark feature or object: **ROAD**
- School, Mosque, shrine: **ROAD**
- Disappearing stream: **ROAD**
- Well, Spring or cistern: **ROAD**
- Underground aqueduct with shafts: **ROAD**
- Wadi, intermittent lake: **ROAD**
- Swamp; Land subject to inundation: **ROAD**
- Mount; Level: **ROAD**
- Distorted surface: **ROAD**
- Sand, flat or rolling; Sand dunes: **ROAD**
- Horizontal control point: **ROAD**

TERRAIN ELEVATIONS

- Spot elevation normal; critical: **10726** feet at the following coordinates: **29°53'N 53°40'E**
- Grid: **VP9709**

AERODROMES (Military or Civil)

- Runway pattern known: **EDNA/50's**
- EDNA-Name: **725**
- 50-Length of longest runway to nearest hundreds of feet
- s-Soft or unimproved surface
- u-Unknown surface
- 725-Elevation

HELIPORT/HELIPAD

- HELIPORT/HELIPAD AT HOSPITAL: **H**

RADIO FACILITIES

- RADIO RANGE LF/MF: **RING HURN**
- MULTIPLE RADIO FACILITIES: **NDB-RING PARS**

CONTROLLED AIRSPACE

- ADIZ: **IRAN ADIZ**

VISUAL AIDS AND OBSTRUCTIONS

- Obstruction: **1108** - Elevation of obstruction top, above sea level. **(259)** - Elevation of obstruction top, above ground level.
- Group obstruction: **1108**
- Radio facility obstruction: **1108**
- Power transmission line: **1108**
- Visual ground sign: **1108**
- Aero light; Marine light: **1108**

CAUTION

Vertical obstructions, including powerlines, have been omitted from this chart because they are not available. However, there is no assurance that all are shown, or that their locations or heights are exact.

CAUTION

AIR INFORMATION CURRENT THROUGH 30 JULY 1997

Consult NOTAMS and Flight Information Publications for the latest air information; the NIMA Aeronautical Chart Updating Manual or MDD (U.S. Aeronautical Chart Amendment document) for other chart revision information.

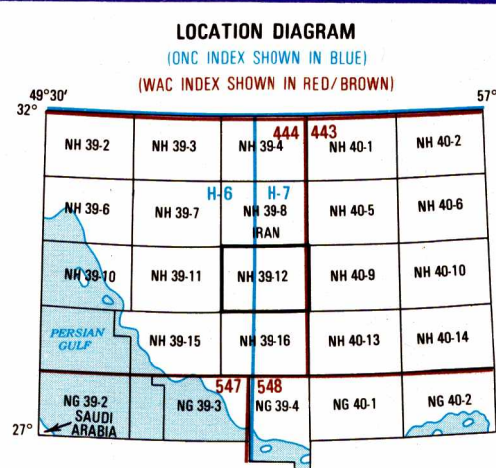
MAGNETIC VARIATION FOR 1995 IS APPROXIMATELY 2 1/2° EAST OVER THE ENTIRE AREA (Annual rate of change 1° increase)

ATTENTION

THIS CHART CONTAINS MAXIMUM ELEVATION FIGURES (MEF)

The Maximum Elevation Figures shown in quadrangles bounded by ticked lines of latitude and longitude are represented in THOUSANDS and HUNDREDS of feet above mean sea level. The MEF is based on information available concerning the highest known feature in each quadrangle, including terrain and obstructions (trees, towers, antennas, etc.)

EXAMPLE: 12,500 feet **125**

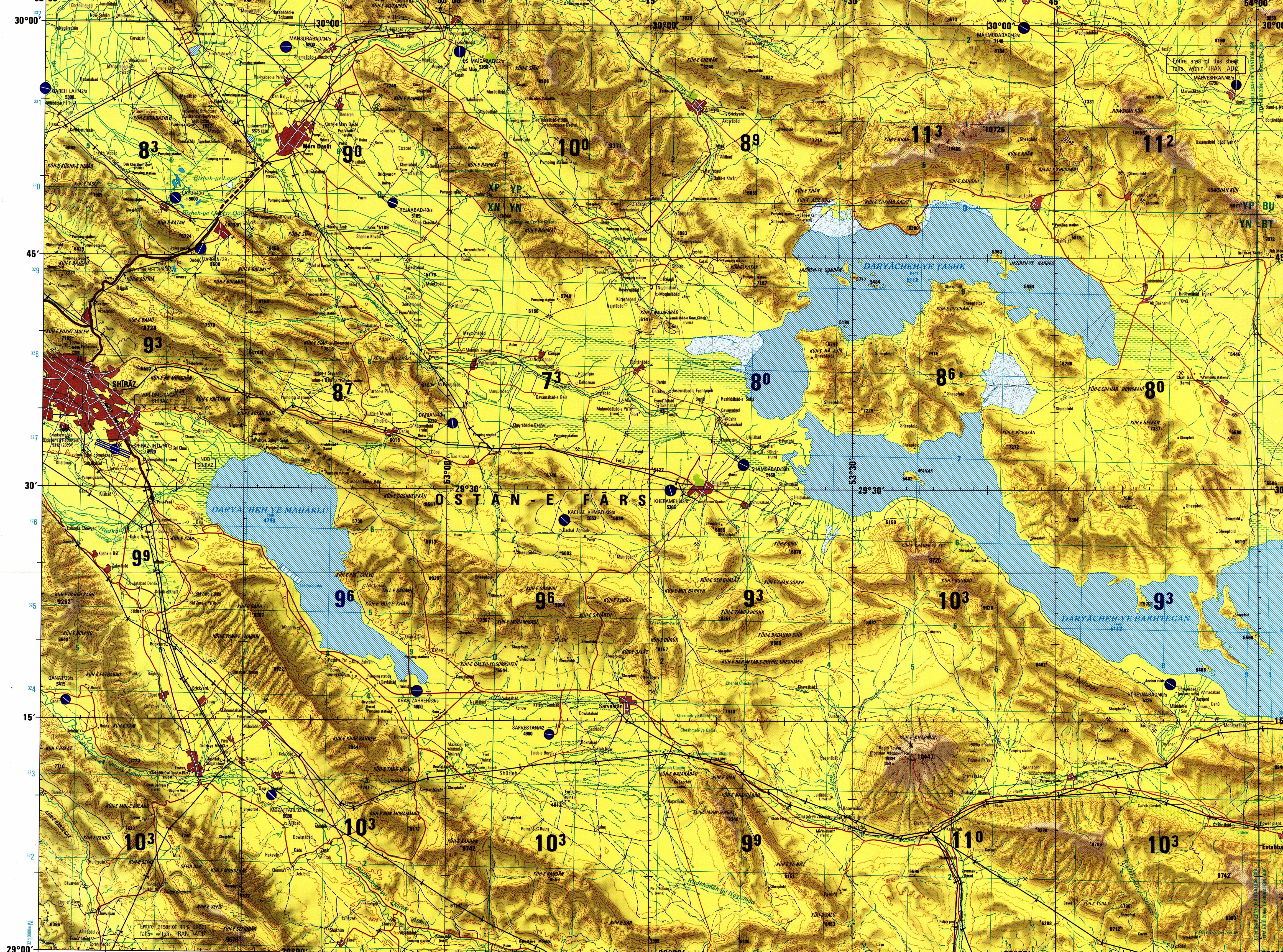


SCALE 1:250,000

SHIRAZ, IRAN

SERIES 1501 AIR SHEET NH 39-12 EDITION 3

SERIES 1501 COMPANION SHEET IS EDITION 1

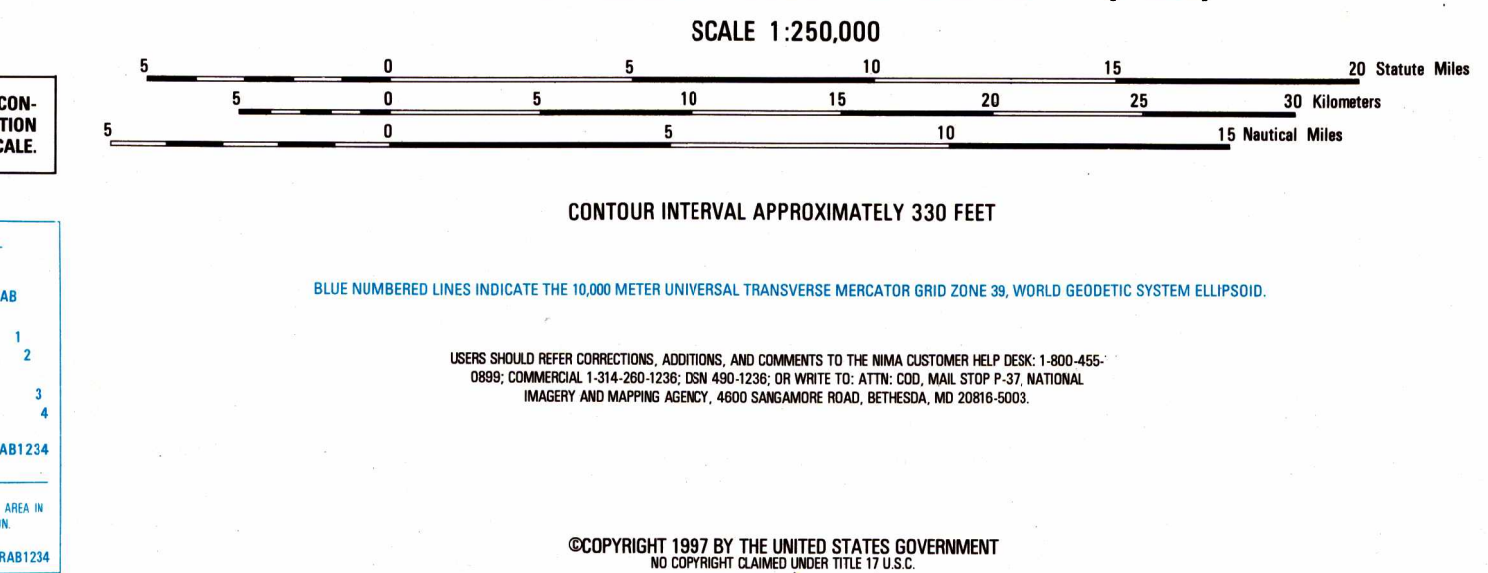
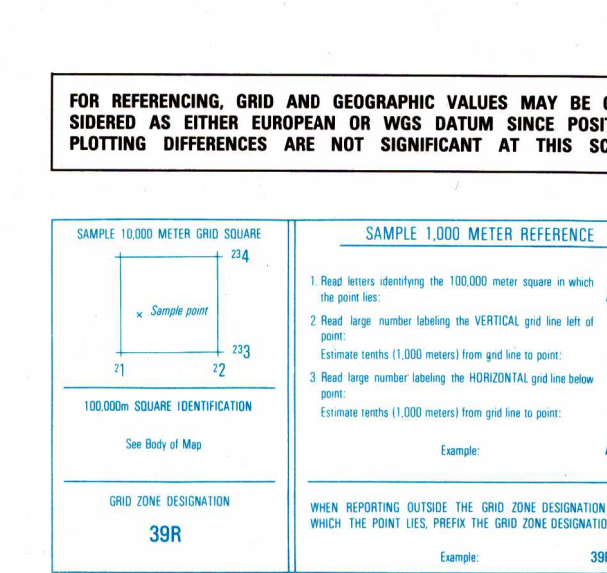


Prepared and published by the National Imagery and Mapping Agency. Compiled 1983. Revised April 1996.

Reprinted by NIMA 3-88

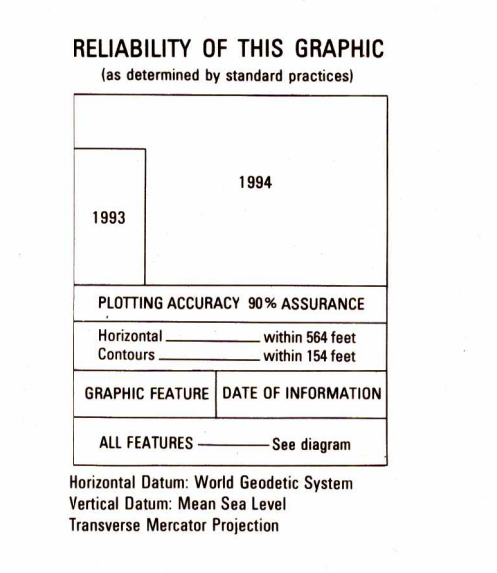
CONVERSION OF ELEVATIONS

FEET	METERS	FEET	METERS
1500	457	3000	914
1000	305	2000	606
900	274	1000	304
800	244	9000	2743
700	213	8000	2286
600	183	7000	2134
500	152	6000	1829
400	122	5000	1524
300	91	4000	1219
200	61	3000	914
150	46	2000	610
100	31	1500	457



GLOSSARY

Abād	populated place
Cheshneh	spring
Dabestan	primary school
Daryābāsh	lake
Deh	settlement
Gardneh	pass
Jashn	island
Kārkāneh	factory
Kūh	mountain
Kūzāq	village
Masrah	farm
Orstān	first-order administrative division
Pol	bridge
Qalat	mountain
Qal'eh	fort
Qasr	palace
Rud	stream
Rūdkāneh	stream
Tāll	mountain
Tāng	pass



RELIABILITY OF THIS GRAPHIC (as determined by standard practices)

1994

PLOTTING ACCURACY 90% ASSURANCE

Horizontal: within 154 feet

Contour: within 154 feet

GRAPHIC FEATURE DATE OF INFORMATION

ALL FEATURES See diagram

Horizontal Datum: World Geodetic System  
Vertical Datum: Mean Sea Level  
Transverse Mercator Projection

NOTES

Powerlines are shown except within populated place tints. Other obstructions are shown if they are 200 feet or more above ground level. See caution note.

On this graphic a lane is generally considered as being 8 feet (2.5 meters) in width.

Names for symbolized populated places are omitted where information is not available or where density of detail does not permit their inclusion. BOUNDARY REPRESENTATION IS NOT NECESSARILY AUTHORITATIVE.

NSN 7641014470534

NIMA REF. NO. 1501ANH3912

ED. NO. 003