

SERIES 1501 AIR SHEET NH 38-10 EDITION 2

POPULATED PLACES table with categories: Over 100,000 (AR RIYAD), 50,000-100,000 (AL QATIF), 10,000-50,000 (TURAYF), 2,000-10,000 (AL UQAYR), Less than 2,000 (DUBA).

ROADS table with categories: Dual highway (4 LANES ROAD), All weather, hard surface (More than two lanes wide, Two lanes wide, One lane wide), All weather, loose or light surface (More than two lanes wide, Two lanes wide, One lane wide), Fair or dry weather, loose surface, Cart track, Footpath, trail, Route marker.

RAILROADS table with categories: Normal gauge 4' 8 1/2" (1.44m), Station position (known, unknown), Narrow gauge.

BOUNDARIES table with categories: International, First-order administrative division.

OTHER FEATURES table with categories: Area name, School, Church, Mosque, Landmark, feature or object, Tank, Well, Wall, Fence, Hut, kraal, Pass, Mine or quarry, Horizontal control point, Aeronomic position, Sand, Distorted surface, Sand and gravel, Mound, Cliff, Levee.

HYDROGRAPHY table with categories: Underground aqueduct with shafts, Small reservoir, Dry lake, Sabkha (Kavir), Intermittent lake, Intermittent streams, Well, Perennial, Intermittent, Disappearing stream, Spring, fountain, cistern, Dam, Salt evaporator, Well, Land subject to inundation.

TERRAIN ELEVATIONS table with categories: Spot elevation: Normal, Critical, HIGHEST KNOWN elevation is 1873 feet at the following coordinates: Geographic 29°00'N, 43°30'E, Grid LT 5409.

AERODROMES (Military or Civil) table with categories: Runway pattern known (EDNA/50's), EDNA-Name, 50-Length of longest runway to nearest hundreds of feet, s-Soft or unimproved surface, u-Unknown surface, 725-Elevation, Runway pattern unknown.

HELIPORT/HELIPAD table with categories: HELIPORT/HELIPAD, HELIPORT/HELIPAD AT HOSPITAL.

RADIO FACILITIES table with categories: RADIO RANGE LF/MF, MULTIPLE RADIO FACILITIES.

CONTROLLED AIRSPACE table with categories: ADIZ, IRAN ADIZ.

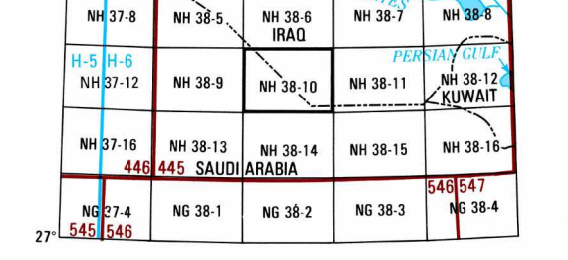
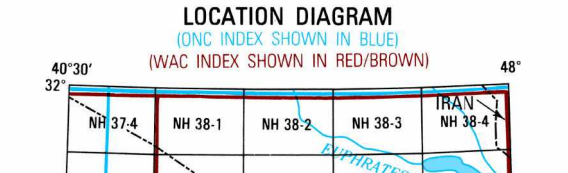
VISUAL AIDS AND OBSTRUCTIONS table with categories: Obstruction (1108-Elevation of obstruction top, above sea level, 2598-Elevation of obstruction top, above ground level), Group obstruction, Radio facility obstruction, Power transmission line, Visual ground sign, VORTAC.

CAUTION Vertical obstructions, including powerlines, have been omitted from the most reliable sources available. However, there is no assurance that all are shown, or that their location or height are exact.

CAUTION AIR INFORMATION CURRENT THROUGH 26 JULY 1999 Consult NOTAMS and Flight Information Publications for the latest air information, the NIMA Aeronautical Chart Updating Manual or MOD (U.K.) Aeronautical Chart Amendment document, for other chart revision information.

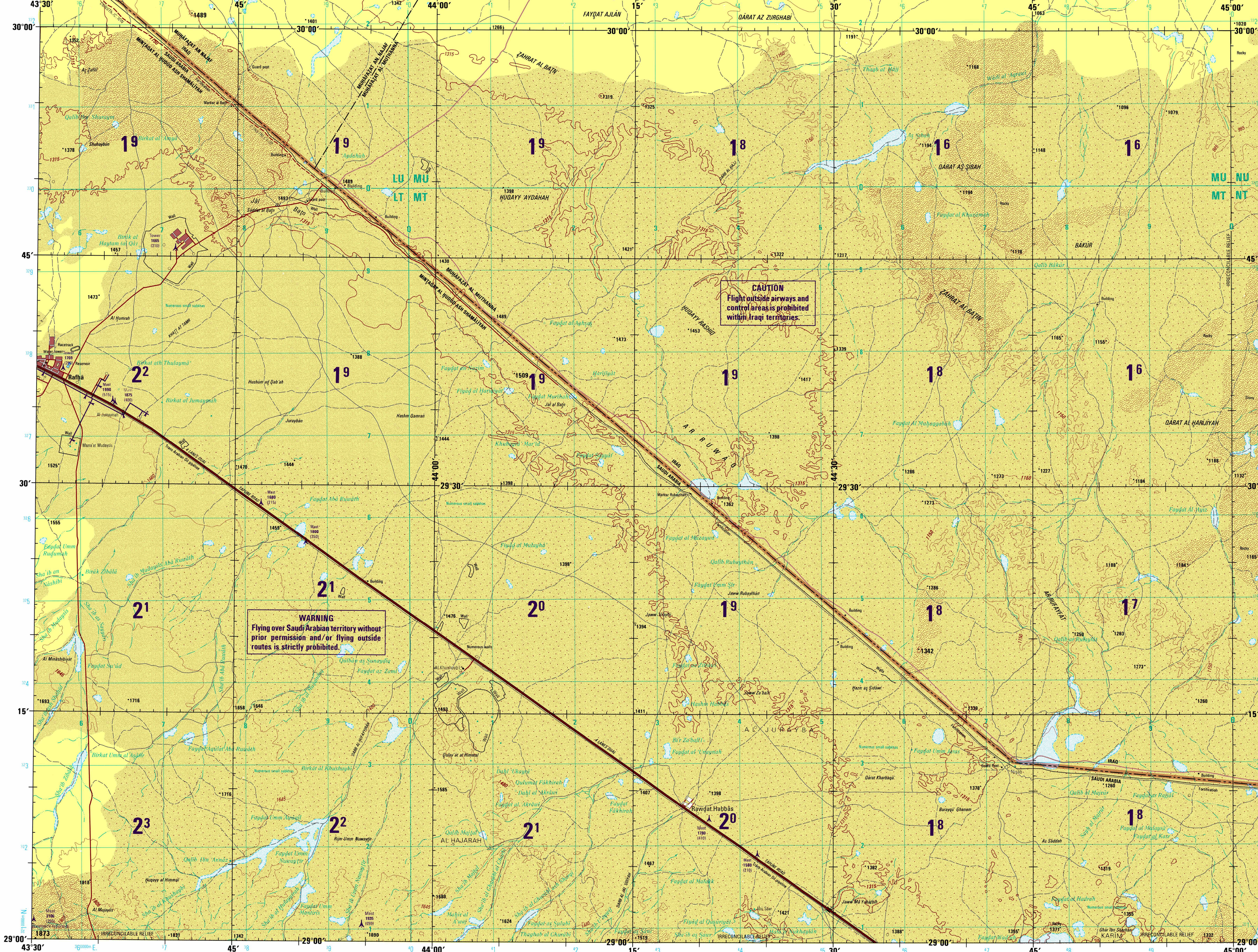
MAGNETIC VARIATION FOR 1995 IS 3° EAST OVER THE ENTIRE AREA (Annual rate of change 1° increase)

ATTENTION THIS CHART CONTAINS MAXIMUM ELEVATION FIGURES (MEF) The Maximum Elevation Figures shown in quadrangles bounded by ticked lines of latitude and longitude are represented by THOUSANDS and HUNDREDS of feet above mean sea level. The MEF is based on information available concerning the highest known feature in each quadrangle, including terrain and obstructions (towers, towers, antennas, etc.). In areas of extensive available relief, the MEF is shown by a note spread across the area. EXAMPLE: 12,500 feet 125



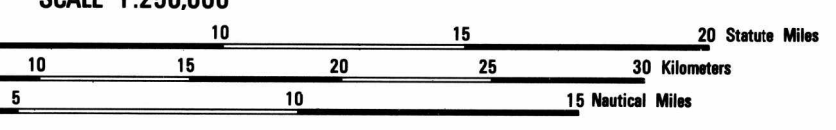
SCALE 1:250,000 RAFHA (EAST), SAUDI ARABIA; IRAQ

SERIES 1501 AIR SHEET NH 38-10 EDITION 2



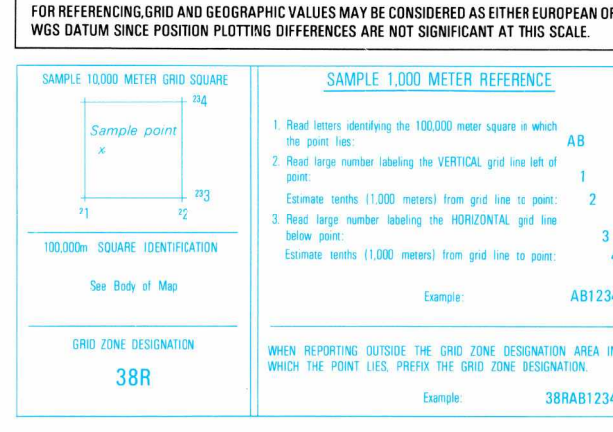
Prepared and published by the National Imagery and Mapping Agency. Compiled January 1991. Revised May 1998.

JOINT OPERATIONS GRAPHIC (AIR)



CONTOUR INTERVAL APPROXIMATELY 165 FEET

CONVERSION OF ELEVATIONS table with columns: FEET, METERS, FEET, METERS.



BLUE NUMBERED LINES INDICATE THE 10,000 METER UNIVERSAL TRANSVERSE MERCATOR GRID, ZONE 38, WORLD GEODETIC SYSTEM ELLIPSOID

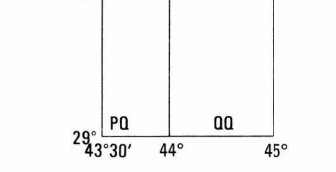
USERS SHOULD REFER TO CORRECTIONS, ADDITIONS, AND COMMENTS TO THE NGA OPERATIONAL HELP DESK: 1-800-455-8899, COMMERCIAL 314-263-4868, DSN 693-4868, OR WRITE TO: DIRECTOR, NATIONAL GEOSPATIAL-INTELLIGENCE AGENCY, ATTN: ES, MARK STOPP-188, 4800 SANGAMORE ROAD, BETHESDA, MD 20818-3300. (UK USERS) DIRECTORATE OF MILITARY SURVEY, MINISTRY OF DEFENCE, ELMAWOOD AVENUE, FELTHAM, MIDDLESEX TW13 7AH.

© COPYRIGHT 1999 BY THE UNITED STATES GOVERNMENT NO COPYRIGHT CLAIMED UNDER TITLE 17 U.S.C.

ELEVATIONS IN FEET GLOSSARY

- Bi'y - artesian or dug well
Burayqah - cistern, pond, well, rainpooled
Dabul - rocky hill
Dabul - waterhole, well
Dabul - road, trail
Dabul - small edges
Faydat, Fiyad - sabkha, sand flat, rainpooled
Hushim, Hushim - broken hills
Huzm - hill
Huzayy - mountain, hill
Jal - escarpment, cliff, ridge
Jaww - depression
Khatt - track
Majlay - rainpooled
Markaz - border post
Mazra'at - farm
Mingagat - first-order administrative division
Muhlagagat - first-order administrative division
Qalib - wells, rainpooled
Qarat - hill
Shar'ib - small rugged wadis, ravine
Thaqib - waterhole
Wadi - wadi
Zahrat - hills

GEOREF BASIC 15° QUADRANGLE



RELIABILITY OF THIS GRAPHIC (as determined by standard practices)

Table showing reliability data for years 1999 and 1997, plotting accuracy, and horizontal/vertical datums.

NOTES Powerlines are shown except within populated place tints. Other obstructions are shown if they are 200 feet or more above ground level. On this graphic a lane is generally considered as being 8 feet (2.5 meters) in width. ROAD REPRESENTATION IS NOT NECESSARILY AUTHORITATIVE SINCE THE LAST EDITION. Road classification should be referred to with caution. ALIGNMENT OF ALL BOUNDARIES IS APPROXIMATE

NSN 7641014098805 NGA Ref No: 1501ANH3810