

SERIES 1501 AIR SHEET NH 33-14 EDITION 1
SERIES 1501 COMPANION SHEET IS EDITION 1

- POPULATED PLACES**
- First importance.....TRIPOLI
 - Second importance.....BENGASI
 - Third importance.....GADAMES
 - Fourth importance.....Tobruk
 - Fifth importance.....JABU
- ROADS**
- All weather, hard surface.....
 - All weather, loose or light surface.....
 - Fair or dry weather, loose surface.....
 - Cart track.....
 - Footpath.....
 - Railroad.....
- BOUNDARIES**
- International.....
 - Populated places, buildings.....
 - Christian church, School, Mosque.....
 - Mine, quarry.....
- Horizontal control point**
- Spot elevation: Normal, Critical.....
 - Seabra; Wadi.....
 - Escarpment; Swamp.....

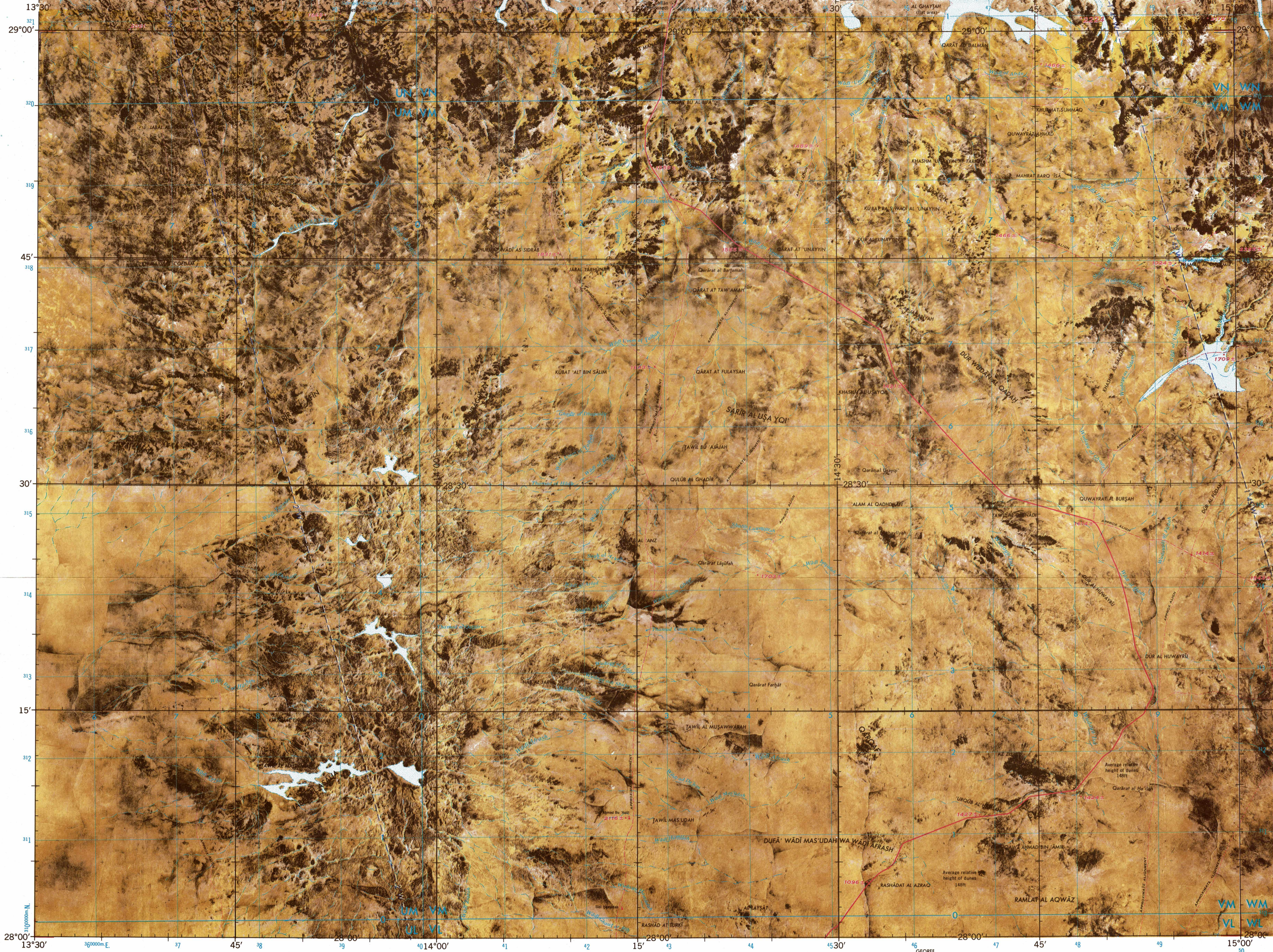
- TERRAIN ELEVATIONS**
- HIGHEST ELEVATION IS UNKNOWN
± following elevation value indicates accuracy is not within 100 feet
- AERODROMES (Military or Civil)** EDNA/50/1
- Field limits with runway pattern..... 725
 - EDNA—Name.....
 - 50—length of longest runway to nearest hundreds of feet.....
 - Soft or unimproved surface.....
 - Unknown surface.....
 - 725—Elevation.....
 - Field limits, with runway pattern unknown.....
 - Field limits unknown, with runway pattern.....
 - Field limits and runway pattern unknown.....
- SEAPLANE BASE**
- SEAPLANE (EMERGENCY)**
- HELIPORT**
- RADIO FACILITIES**
- RADIO RANGE LF/MF.....
 - MULTIPLE RADIO FACILITIES.....
 - CONTROLLED AIRSPACE..... ATLANTIC ADIZ
 - ADIZ.....
- VISUAL AIDS AND OBSTRUCTIONS**
- OBSTRUCTION..... 1108 (259)
 - 1108—Elevation of obstruction top, above sea level.....
 - (259)—Elevation of obstruction top, above ground level.....
 - Group obstruction.....
 - Radio facility obstruction.....
 - Power transmission line.....
 - Visual ground sign..... M
 - Aero light; Marine light.....

CAUTION
AIR INFORMATION CURRENT THROUGH 5 FEBRUARY 1970
Consult Notices to Airmen (NOTAMS) and Flight Information Publications (FIPs) for the latest air information; the Chart Updating Manual (CHUM) for other chart revision information.

LINE OF EQUAL MAGNETIC VARIATION FOR 1965
(Annual rate of change 5' decrease)

LOCATION DIAGRAM
(ONC INDEX SHOWN IN BLUE)

NH 32-8	NH 33-5	NH 33-6	NH 33-7	NH 33-8
NH 32-12	NH 33-9	NH 33-10	NH 33-11	NH 33-12
NH 32-16	NH 33-13	NH 33-14	NH 33-15	NH 33-16
NG 32-4	NG 33-1	NG 33-2	NG 33-3	NG 33-4
NG 32-8	NG 33-5	NG 33-6	NG 33-7	NG 33-8

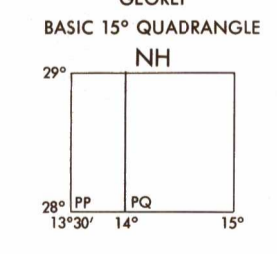
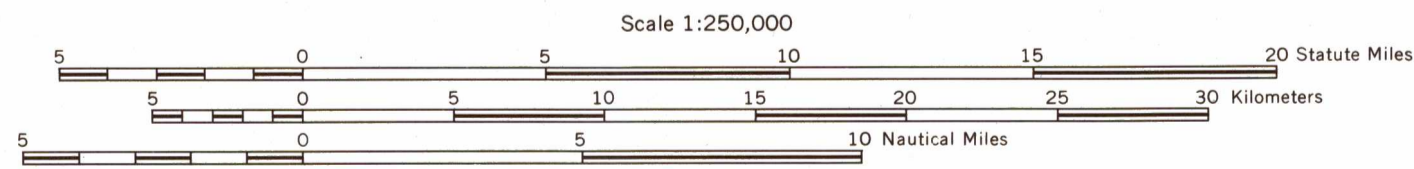


Prepared under the direction of the Department of Defense and published by the U.S. Army Topographic Command, Washington, D.C. Compiled in 1969 from best available source materials.

ELEVATIONS IN FEET

JOINT OPERATIONS GRAPHIC (AIR)

ELEVATIONS IN FEET



RELIABILITY OF THIS SHEET
(as determined by standard practices)

MAP FEATURE	DATE OF INFORMATION
Road classification	1934-62
Hydrography	1934-62
Vegetation	1934-62
All other features	1934-62

Road information not verified by reconnaissance. Map not field checked.

Horizontal Datum: None
Vertical Datum: None
Transverse Mercator Projection

370 Printed by the U.S. Army Topographic Command
Reprinted by NIMA 3-02

NOTES:
No obstructions 200 feet or more above ground level are known to exist in this area.

SCALE 1:250,000
NAB AL JARW, LIBYA

SERIES 1501 AIR SHEET NH 33-14 EDITION 1
SERIES 1501 COMPANION SHEET IS EDITION 1

GRID ZONE DESIGNATION
33R

100,000 M. SQUARE IDENTIFICATION

UN	VN	30
UM	VM	30
UL	VL	30

TO GIVE A STANDARD REFERENCE ON THIS SHEET TO HANDED 1000 METERS

SAMPLE POINT: 1703

- Read letters identifying 100,000 meter square in which the point lies.
- Locate first VERTICAL grid line to LEFT of point and read LARGE figures labeling the line either in the top or bottom margin, or on the line itself. Estimate tenths from grid line to point.
- Locate first HORIZONTAL grid line BELOW point and read LARGE figures labeling the line either in the left or right margin, or on the line itself. Estimate tenths from grid line to point.

SAMPLE REFERENCE: VM4142
If reporting, beyond 9°N, or 18°E, write Grid Zone Designation, ex. 33RVM4142

BLUE NUMBERED LINES INDICATE THE 10,000 METER UNIVERSAL TRANSVERSE MERCATOR GRID ZONE 33, INTERNATIONAL SPHEROID

USERS SHOULD REFER CORRECTIONS, ADDITIONS, AND COMMENTS TO THE NIMA OPERATIONAL HELP DESK: 1-800-455-0089; COMMERCIAL: 314-263-4884; DSN 683-4884. OR WRITE TO: DIRECTOR, NATIONAL MANGRO AND MAPPING AGENCY, ATTN: IS, MAIL STOP 1-98, 4050 SANGAMONUE ROAD, BETHESDA, MD 20815-5003

GLOSSARY

- 'Alam.....hill
- Barq.....hill
- Du'a.....gorge, ravine
- Dur.....hill(s) plateau
- Ghadir.....pool
- Jarrat.....stony area
- Jabal.....mountain, hill
- Khashm.....hill
- Khuraymat.....shrine
- Khurmat.....bass, hill
- Kubat.....hill
- Nab.....hillock, sand dune
- Qalb.....hill
- Qarar.....depression
- Qararat.....depression, basin
- Qarat.....hill
- Qasr.....fort, fortified settlement
- Qawz.....dunes
- Quayb.....hills
- Quwayrat.....hills
- Ramat.....sand dunes
- Sarif.....gravel desert
- Sayb.....wadi
- Shalib.....wadi
- Shir'ab.....wadis
- Shu'bat.....wadi
- Sidi.....shrine
- Suwaynyat.....well
- Tarif.....road, track, caravan trail
- Tawl.....hill, peak
- Sidi.....shrine
- Thamad.....cistern
- U'rub.....ridge, hill
- Qararat.....depression, basin
- Wadi.....wadi
- Wudayyat.....wadi
- Wudayyat.....wadis

NSN 7641014005207
NIMA REF. NO. 1501ANH3314

ED. NO. 001