

SERIES 1501 AIR SHEET NH 33-10 EDITION 2
SERIES 1501 COMPANION SHEET IS EDITION 3

- POPULATED PLACES**
- Over 100,000 ALGER
 - 50,000 to 100,000 SAFI
 - 10,000 to 50,000 Sertif
 - 2,000 to 10,000 Tifflet
 - Less than 2,000 Roman
- ROADS**
- Dual highway 4 LANES DUAL
 - All weather, hard surface 4 LANES
 - More than two lanes wide
 - Two lanes wide
 - One lane wide
 - All weather, loose or light surface 3 LANES
 - More than two lanes wide
 - Two lanes wide
 - One lane wide
 - Fair or dry weather, loose surface
 - Cart track, footpath, trail
 - Route marker
- RAILROADS**
- Normal gauge 95 m (3'1 1/2") Single track Multiple track
 - Narrow gauge
- BOUNDARIES**
- International
 - First-order administrative division
- OTHER FEATURES**
- Landmark
 - Horizontal control point
 - Well, Tank
 - School, Church, Mosque
 - Mine, Cave
 - Escarpment, Levee
 - Dunes: Crescent, Lateral, Ripple, Transverse
 - Sand, Distorted Surface
- VEGETATION**
- Orchard, plantations, vineyards
- HYDROGRAPHY**
- Spring or stream
 - Well, Perennial, Intermittent
 - Wadi, sabkha, wet depression or dry lake
 - Intermittent streams: Single, Double line
- TERRAIN ELEVATIONS**
- Spot elevation: Normal, Critical
 - HIGHEST KNOWN ELEVATION IS 2224 feet at the following coordinates: Geographic Grid 29°01'N, 14°48'E; Grid VN8109
- AERODROMES (Military or Civil)**
- Runway pattern known EDNA-50/1 725
 - EDNA-Name
 - 50-Length of longest runway to nearest hundreds of feet
 - s-Soft or unimproved surface
 - u-Unknown surface
 - 725-Elevation
 - Runway pattern unknown
- HELIPORT**
- RADIO FACILITIES**
- RADIO RANGE LF/MF
 - MULTIPLE RADIO FACILITIES
 - RADIO AIDS TO NAVIGATION
 - VHF OMNI RANGE (VOR)
 - VORTAC
 - TACAN
- VISUAL AIDS AND OBSTRUCTIONS**
- Obstruction 1108
 - 1108-Elevation of obstruction top, above sea level
 - (258)-Elevation of obstruction top, above ground level
 - Group obstruction
 - Radio facility obstruction
 - Power transmission line
 - Visual ground sign
 - Aero light; Marine light
- CONTROLLED AIRSPACE**
- ADIZ ATLANTIC ADIZ

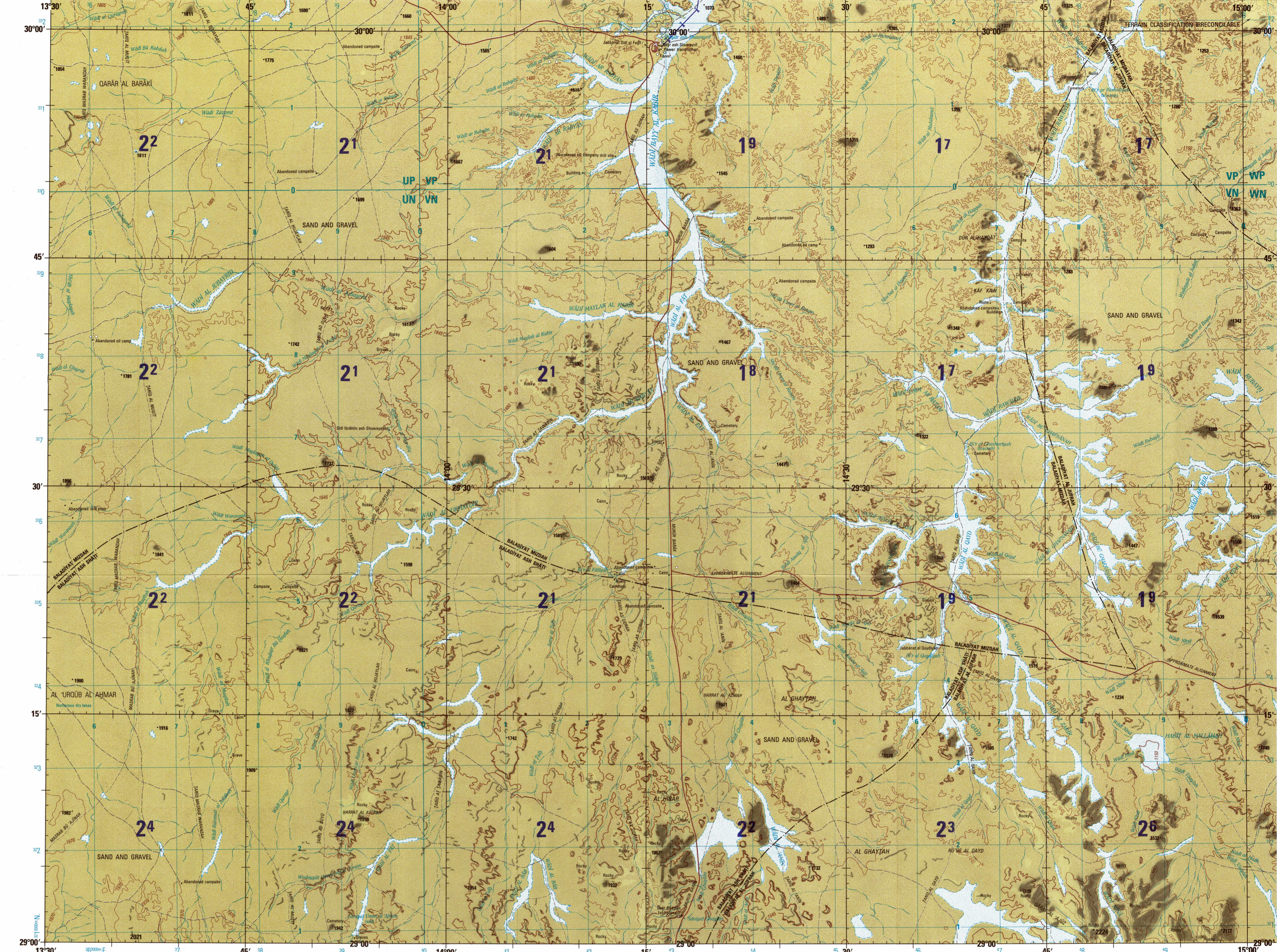
CAUTION
AIR INFORMATION CURRENT THROUGH 17 MAY 1988
Consult NOTAMS and Flight Information Publications for the latest air information; the OOD Aeronautical Chart Updating Manual or MOD (U.K.) Aeronautical Chart Amendment document for other chart revision information.

MAGNETIC VARIATION FOR 1985 IS APPROXIMATELY 0° OVER THE ENTIRE AREA
(Annual rate of change 7' increase)
East declination areas
(Annual rate of change 7' decrease)
West declination areas

LOCATION DIAGRAM
(LONG INDEX SHOWN IN BLUE)
(WAC INDEX SHOWN IN RED/BROWN)

10°30'	11°00'	11°30'	12°00'	12°30'	13°00'	13°30'	14°00'	14°30'	15°00'
32°	31°30'	31°00'	30°30'	30°00'	29°30'	29°00'	28°30'	28°00'	27°30'
32°	31°30'	31°00'	30°30'	30°00'	29°30'	29°00'	28°30'	28°00'	27°30'
32°	31°30'	31°00'	30°30'	30°00'	29°30'	29°00'	28°30'	28°00'	27°30'

SCALE 1:250,000
QAQR ASH SHUWAYRIF, LIBYA
SERIES 1501 AIR SHEET NH 33-10 EDITION 2
SERIES 1501 COMPANION SHEET IS EDITION 3

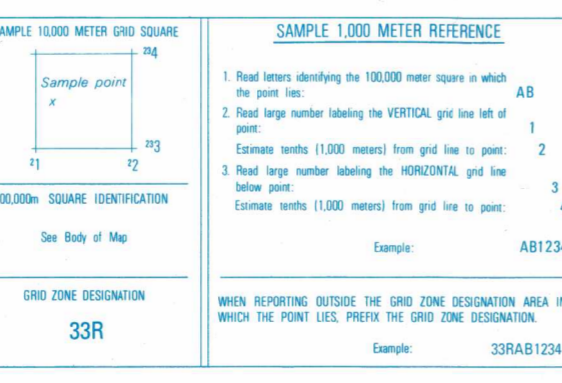


Prepared and published by the Defense Mapping Agency
Hydrographic/Topographic Center, Washington, D.C.
Compiled in 1988

CAUTION
Vertical obstructions, including powerlines, have been extracted from the most reliable sources available. However, there is no assurance that all are shown, or that their locations or heights are exact.

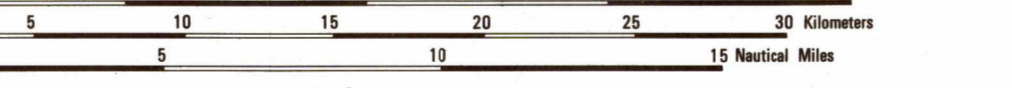
CONVERSION OF ELEVATIONS

FEET	METERS
1000	305
10000	3048
900	274
8000	2438
800	244
700	213
6000	1823
600	182
5000	1512
400	122
3000	91
200	61
1000	305
100	30



JOINT OPERATIONS GRAPHIC (AIR)

SCALE 1:250,000



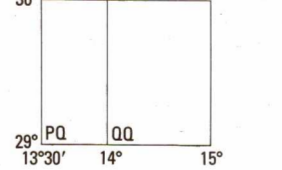
CONTOUR INTERVAL APPROXIMATELY 165 FEET

BLUE NUMBERED LINES INDICATE THE 10,000 METER UNIVERSAL TRANSVERSE MERCATOR GRID, ZONE 33, WORLD GEODETIC SYSTEM 1984 ELLIPSOID.

USERS SHOULD REFER CORRECTIONS, ADDITIONS, AND COMMENTS TO THE NIMA CUSTOMER HELP DESK: 1-800-455-0099; COMMERCIAL 314-260-5032; DSN 490-5032; OR WRITE TO DIRECTOR, NATIONAL IMAGERY AND MAPPING AGENCY, ATTN: CDD, MAIL STOP P-37, 4600 SANGAMORE ROAD, BETHESDA, MD 20818-5003

ATTENTION
THIS CHART CONTAINS MAXIMUM ELEVATION FIGURES (MEF)
The Maximum Elevation Figures shown in quadrangles bounded by ticked lines of latitude and longitude are represented in THOUSANDS and HUNDREDS of feet above mean sea level. The MEF is based on information available concerning the highest known feature in each quadrangle, including terrain and obstructions (trees, towers, antennas, etc.).
EXAMPLE: 12,500 feet **125**

GEOREF BASIC 15° QUADRANGLE



ELEVATION TINTS

RELIABILITY OF THIS GRAPHIC
Compiled from best available source materials.

Horizontal Datum: World Geodetic System 1984
Vertical Datum: Mean Sea Level
Transverse Mercator Projection

NOTES
Powerlines are shown except within populated place tints. Other obstructions are shown if they are 200 feet or more above ground level. See caution note.
On this graphic a lane is generally considered as being 8 feet (2.5 meters) in width.
Road classifications should be referred to with caution. THE REPRESENTATION OF INTERNATIONAL BOUNDARIES IS NOT NECESSARILY AUTHORITATIVE.
ALIGNMENT OF ALL BOUNDARIES IS APPROXIMATE.

- GLOSSARY**
- Abyār: wells
 - Baladiyat: first-order administrative division
 - Bi'y: well
 - Dār: hills
 - Habit: sabkha, depression
 - Jabbānat: cemetery
 - Kāf: hill
 - Masrab: trail
 - Qārat: hill, peak
 - Rū'is: mountains
 - Sāniyat: well
 - Shayb: wadi
 - Shū'ib: wadi branches
 - Shu'bat: well
 - Sidi: shrine
 - Sunaynat: well
 - Tarīq: trail
 - Wādī: wadi
 - Wādīyat: wadi branches

NSN 7641014102453
NIMA REF. NO. 1501ANH3310