

SERIES 1501 AIR SHEET NH 33-1 EDITION 4

POPULATED PLACES

Over 100,000
50,000 to 100,000
10,000 to 50,000
2,000 to 10,000
Less than 2,000

ROADS

Dual highway
All weather, hard surface
More than two lanes wide
Two lanes wide
One lane wide
All weather, loose or light surface
More than two lanes wide
Two lanes wide
One lane wide
Fair or dry weather, loose surface
Curt track, footpath, trail
Route marker

RAILROADS

Normal gauge 0.95m (3'1.5")
Narrow gauge
Station: Position known; Position unknown

BOUNDARIES

International
First-order administrative division
Reservation

HORIZONTAL CONTROL POINTS

Astronomic position
Horizontal control point

TERRAIN ELEVATIONS

Spot elevation: Normal; Critical
HIGHEST KNOWN elevation is 3218 feet at the following coordinates: Geographic: 31°57'N, 13°18'E Grid: URS37

RELIEF

Sand
Dunes: Star; Ripple; Lateral
Cliff; Levee

CULTURE

Church; Mosque; School
Hut, kraal; Landmark feature
Mine; Cave
Tank; Well (other than water)
Area name

VEGETATION

Orchard; plantations; vineyards

HYDROGRAPHY

Well; Perennial; Intermittent; Spring; cistern
Wadi; Sabkha; wet depression

AERODROMES (Military or Civil)

Runway pattern known
EDNA-Name
50—Length of longest runway to nearest hundreds of feet
—Soft or unpaved surface
—Unknown surface
725—Elevation
Runway pattern unknown

VISUAL AIDS AND OBSTRUCTIONS

Obstruction
1100—Elevation of obstruction top, above sea level
(250)—Elevation of obstruction top, above ground level
Group obstruction
Radio facility obstruction
Power transmission line

CAUTION

Vertical obstructions, including powerlines, have been extracted from the most reliable sources available. However, there is no assurance that all are shown, or that their locations or heights are exact.

CAUTION

AIR INFORMATION CURRENT THROUGH 12 MARCH 1993

Consult NOTAMS and Flight Information Publications for the latest air information; the DOD Aeronautical Chart Updating Manual or MDD (U. K.) Aeronautical Chart Amendment document, for other chart revision information.

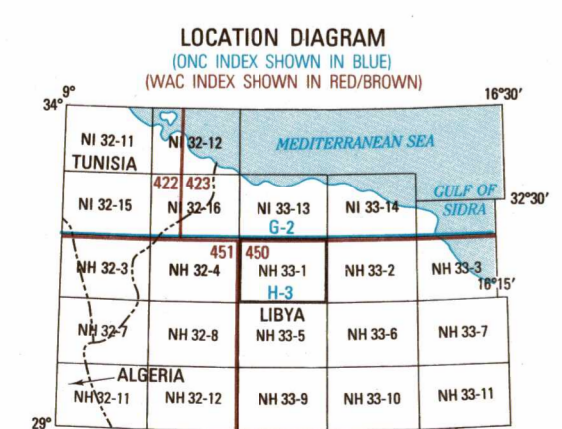
MAGNETIC VARIATION FOR 1990 IS APPROXIMATELY 0° OVER THE ENTIRE AREA (Annual rate of change, 5" increase.)

ATTENTION

THIS CHART CONTAINS MAXIMUM ELEVATION FIGURES (MEF)

The Maximum Elevation Figures shown in quadrangles bounded by ticked lines of latitude and longitude are represented in THOUSANDS and HUNDREDS of feet above mean sea level. The MEF is based on information available concerning the highest known features in each quadrangle, including terrain and obstructions (towers, towers, antennas, etc.).

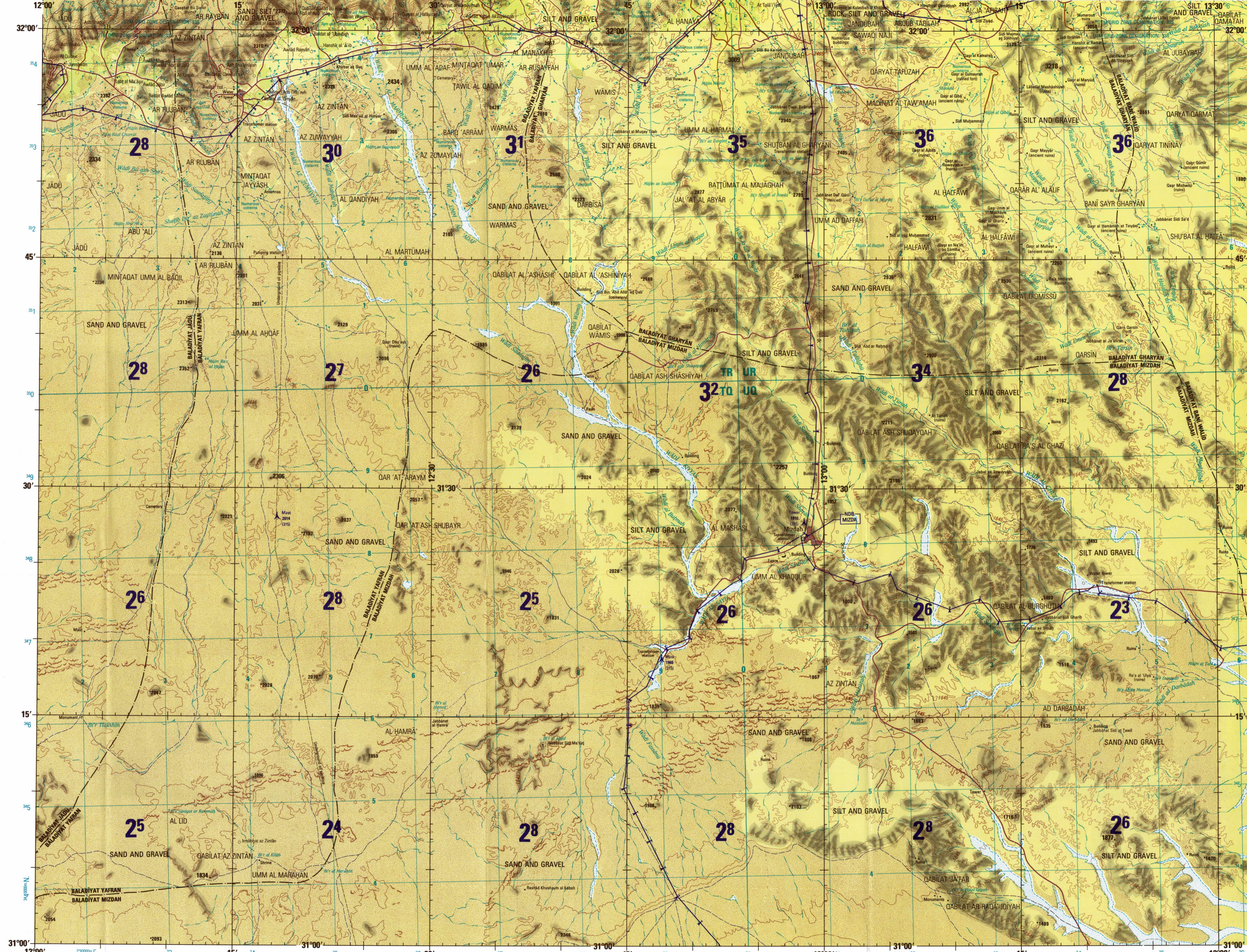
EXAMPLE: 12,500 feet **125**



Prepared and published by the Defense Mapping Agency Hydrographic/Topographic Center, Bethesda, MD. Compiled August 1992.

SCALE: 1:250,000
MIZDAH, LIBYA

SERIES 1501 AIR SHEET NH 33-1 EDITION 4



CONVERSION OF ELEVATIONS

FEET	METERS	FEET	METERS
1000	305	10000	3048
900	274	8000	2743
800	244	6000	2438
700	213	5000	2134
600	183	4000	1829
500	152	3000	1524
400	122	2000	1219
300	91	1000	914
200	61	2000	610
150	46	1500	457
100	31	1000	305

COORDINATE CONVERSION: WGS 84 TO ED
Grid: Add 03m E, Add 190m N.
Geographic: Add 3.4" Long, Add 4.4" Lat.

THE DATUM AND ELLIPSOID FOR THIS MAP HAVE CHANGED FROM PREVIOUS EDITIONS. FOR ADJACENT AND OVERLAPPING SHEETS, THERE ARE NO SIGNIFICANT CHANGES IN GRID OR GEOGRAPHIC VALUES AT THIS SCALE.

CONTOUR INTERVAL APPROXIMATELY 165 FEET

BLUE NUMBERED LINES INDICATE THE 10,000 METER UNIVERSAL TRANSVERSE MERCATOR GRID, ZONE 33, WORLD GEODETIC SYSTEM 1984 ELLIPSOID.

JOINT OPERATIONS GRAPHIC (AIR)

SCALE 1:250,000

0 5 10 15 20 25 30 Statute Miles
0 5 10 15 20 25 30 Kilometers
0 5 10 15 20 25 30 Nautical Miles

GLOSSARY

Abayir... wells
'Ayn... spring
Baladiyah... first-order administrative division
Baldat... village
Bayt... ruins
Bir... well, cistern
Dir... house
Hanahir... ruins
Jabbabat... cemetery
Kharbat... ruins
Madrasat... school
Mijin... cistern, well
Mintagat... area
Qablat... tribal area
Qaryat... village
Qaryat... fort, abandoned fort
Qubayr... graves
Rashad... cairn
Saniyat... well, cistern
Shayb... wadi branch
Sif... shrine
Tarf... trail
Wadi... wadi

RELIABILITY OF THIS GRAPHIC

Compiled from best available source materials.

Horizontal Datum: World Geodetic System 1984
Vertical Datum: Mean Sea Level
Transverse Mercator Projection

NOTES

Powerlines are shown except within populated place tints. Other obstructions are shown if they are 200 feet or more above ground level. See caution note.

On this graphic a lane is generally considered as being 8 feet (2.5 meters) in width.

Road classifications should be referred to with caution.

Boundary representation is not necessarily authoritative.

DEPICTION OF INTERNATIONAL BOUNDARIES HAS BEEN CHANGED SINCE THE LAST EDITION.

© COPYRIGHT 1993 BY THE UNITED STATES GOVERNMENT.
NO COPYRIGHT CLAIMED UNDER TITLE 17 U.S.C.

ELEVATION TINTS

FEET
2025
600

