

SERIES 1501 AIR SHEET NH 14-10 EDITION 4

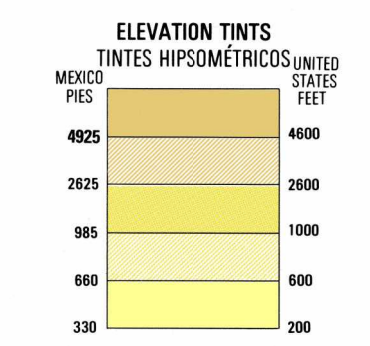
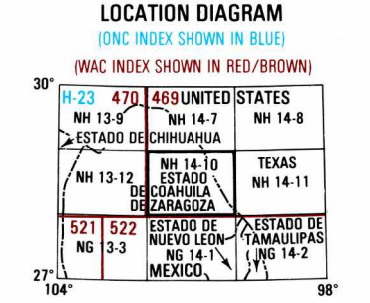


Table with 2 columns: Reliability of this graphic (I, II) and corresponding symbols.

Table with 2 columns: Plotting accuracy (Horizontal, Vertical) and corresponding symbols.

GLOSSARY - GLOSARIO

Large glossary table with Spanish and English terms and their corresponding symbols.



Conversion of elevations table showing feet to meters and vice versa.

GEOREF BASIC 15' QUADRANGLE

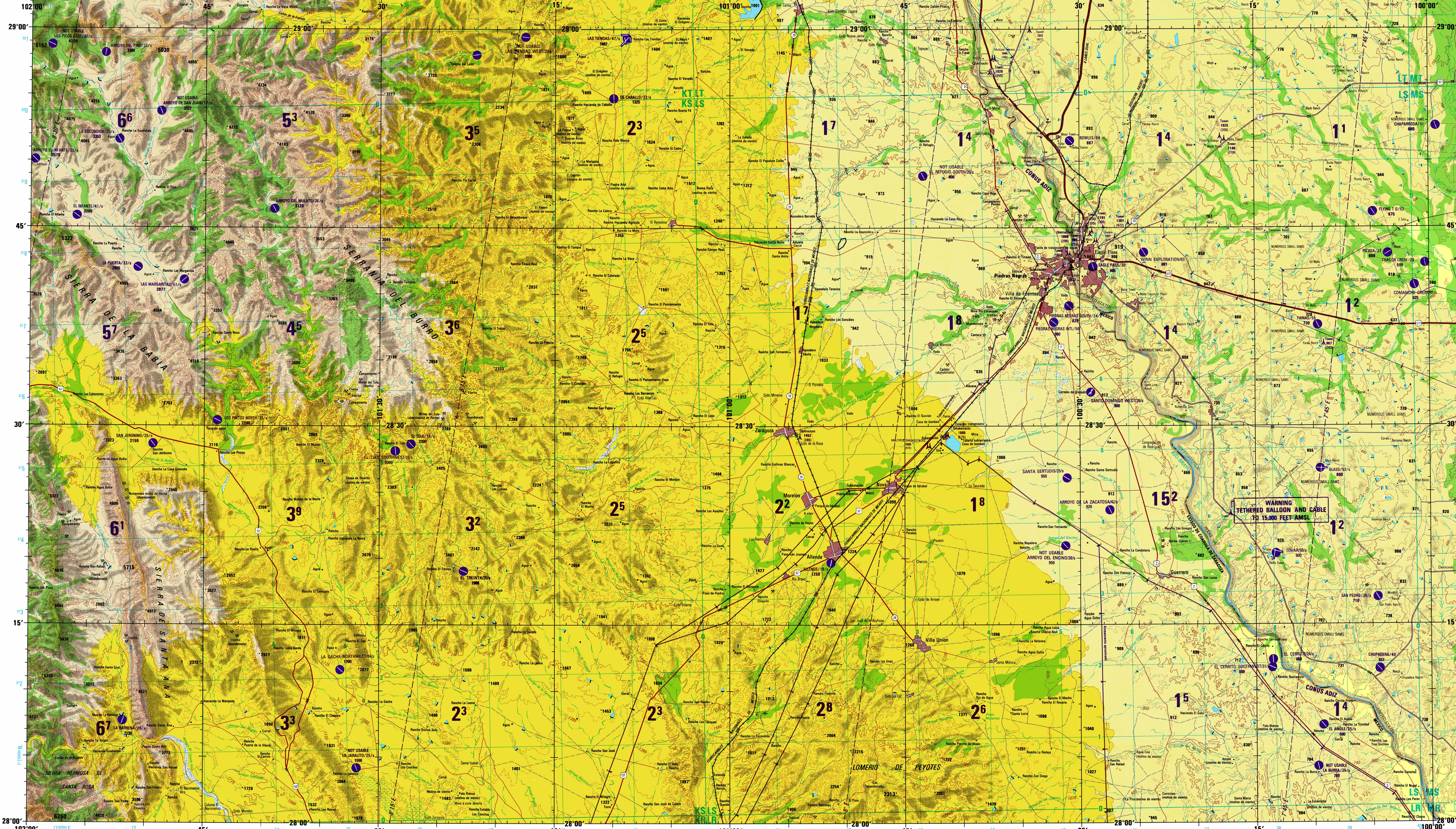
AIR INFORMATION CURRENT THROUGH APRIL 1992

CAUTION Vertical obstructions, including powerlines, have been removed from the map.

Prepared and published by the Defense Mapping Agency Hydrographic/Topographic Center, Bethesda, MD.



SERIES 1501 AIR SHEET NH 14-10 EDITION 4



ELEVATIONS IN FEET ELEVACIONES EN PIES

Table describing road and railroad symbols, including lane counts and surface types.

ROADS - CARRETERAS (MEXICO) 4 LANES DUAL AUTOSTRADA DE 4 CARRELES

Table describing various road types and symbols used in Mexico.

JOINT OPERATIONS GRAPHIC (AIR) SCALE 1:250,000

CONTOUR INTERVAL 50 FEET WITH SUPPLEMENTARY CONTOURS AT 25 FOOT INTERVALS IN THE UNITED STATES; APPROXIMATELY 165 FEET WITH SUPPLEMENTARY CONTOURS AT APPROXIMATELY 85 FOOT INTERVALS IN MEXICO.

AERODROMES (Military or Civil) AERODROMOS (Militares o Civiles)

Table describing symbols for airports, heliports, and other aviation facilities.

RADIO FACILITIES FACILIDADES DE RADIO

Table describing symbols for various radio communication facilities.

TERRAIN ELEVATIONS-ELEVACIONES DEL TERRENO

Table describing symbols for terrain features like spot elevations, contours, and vegetation.

NOTES NOTAS

Powerlines are shown except within populated place limits. Other obstructions are shown if they are 200 feet or more above ground level.

