

SERIES 1501 AIR SHEET NG 47-5 EDITION 1
COMPANION SERIES 1501 SHEET IS EDITION 1

LEGEND

POPULATED PLACES

Over 100,000
50,000 to 100,000
10,000 to 50,000
5,000 to 10,000
Less than 5,000

ROADS

Dual Highways Under construction
All weather
Hard surface, two or more lanes wide
Hard surface, one lane wide
Loose or light surface, two or more lanes wide
Loose or light surface, one lane wide
Fair or dry weather, loose surface
Cart track
Foot path, trail

RAILROADS

Normal gauge 1m. 3'3"

BOUNDARIES

International
Province or state
Landmark feature
Mine

TERRAIN ELEVATIONS

HIGHEST KNOWN elevation is 11190 feet at 26°47'N, 97°14'E
Spot elevation Normal Critical .768 .1549
Horizontal control point

HYDROGRAPHY

Falls, Rapids
Salt evaporator
Swamp or marsh
Mangrove
Reef, limit of danger
Rocks, Sunken, Awash
Foreshore flat
levee
Unclassified stream

VEGETATION

Glacier, Glacial moraine

VEGETATION

Woods-brushwood, Plantation, Tropical grass

AERODROMES

Field limits with runway pattern
EDNA - None
50 - length of longest runway to nearest hundreds of feet
S - Soft or unimproved surface
725 - Elevation
Field limits, with runway pattern unknown
Field limits unknown, with runway pattern
Field limits and runway pattern unknown

SEAPLANE BASE

SEAPLANE (EMERGENCY)

HELIPORT

RADIO FACILITIES

RADIO RANGE (F/M/P)

MULTIPLE RADIO FACILITIES

CONTROLLED AIRSPACE

ATLANTIC ADIZ

VISUAL AIDS AND OBSTRUCTIONS

Obstruction
1108 - Elevation of obstruction top, above sea level.
(259) - Elevation of obstruction top, above ground level.
Group obstruction
Radio facility obstruction
Power transmission line
Ocean station vessel (Normal position)
Visual ground sign
Aero light Marine light

CAUTION
AIR INFORMATION CURRENT THROUGH 31 JANUARY 1968
Consult Notices to Airmen (NOTAMS) and Flight Information Publications (FLIPs) for the latest air information; the Chart Updating Manual (CHUM) for other chart revision information.

HIGHEST TERRAIN elevation for each 15 MINUTE QUADRANGLE is represented in THOUSANDS and HUNDREDS of feet. They are omitted where related information is inadequate. A minus sign (-) following the figure indicates that the figure is based on an estimated elevation.

EXAMPLES:

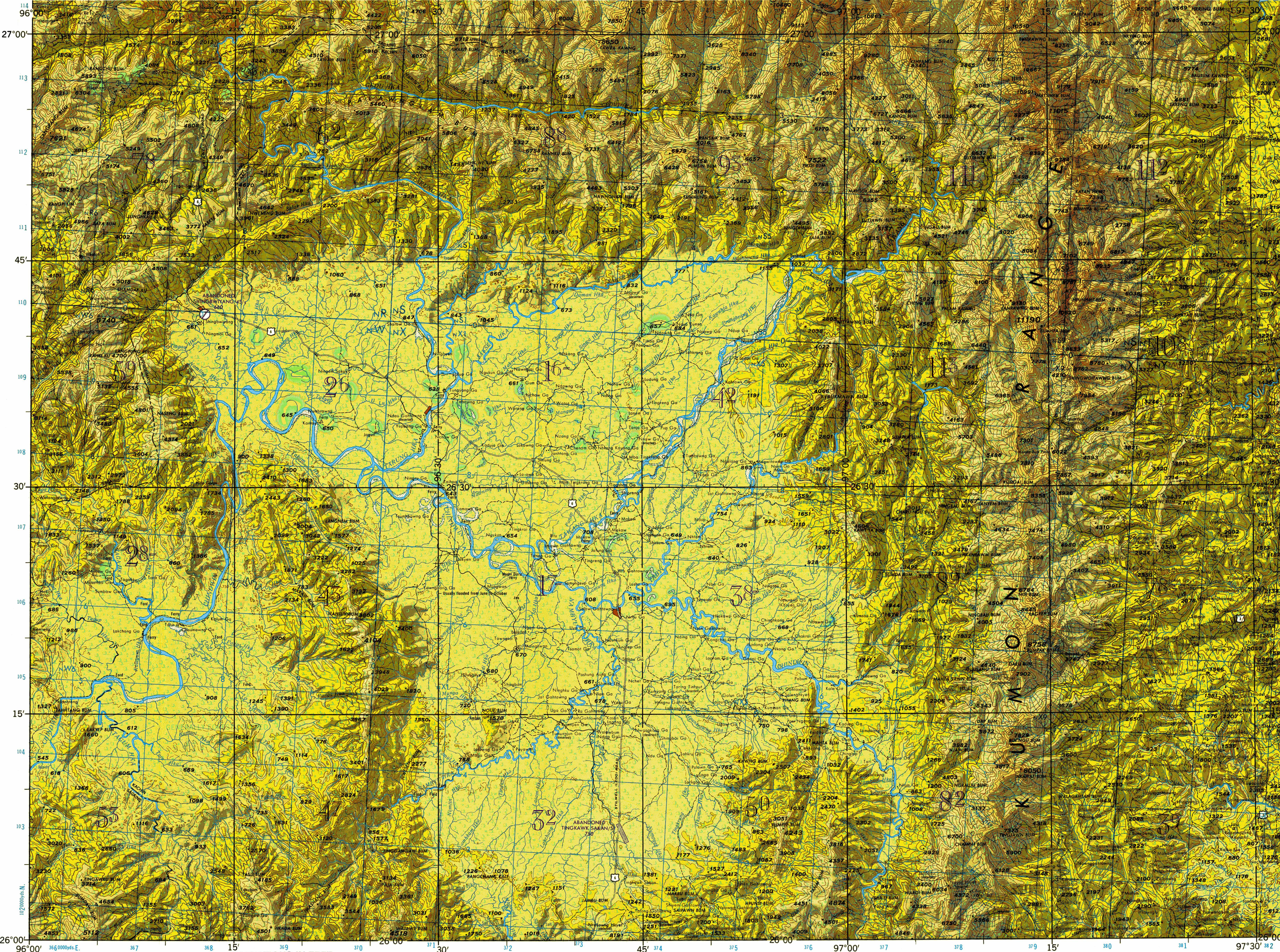
51 81-

MAGNETIC VARIATION FOR 1965 IS APPROXIMATELY 1°W OVER THE ENTIRE AREA
(Annual rate of change - no change)

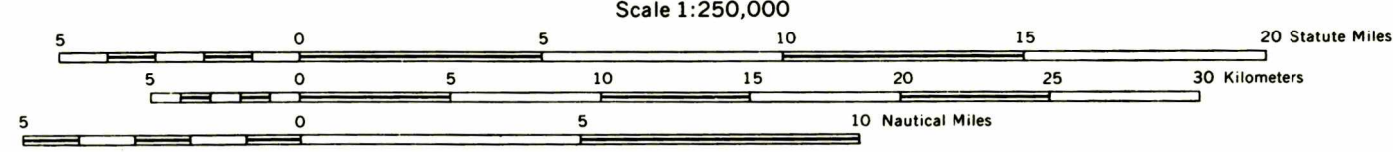
NOTES:

No obstructions 200 feet or more above ground level are known to exist within this area.
THE ALIGNMENT OF THE PRIMARY ADMINISTRATIVE BOUNDARIES IS APPROXIMATE.
THE REPRESENTATION OF INTERNATIONAL BOUNDARIES IS NOT NECESSARILY AUTHORITY.
A lone is generally considered as being 8 to 15 feet (2.44 to 4.56 meters) width.

TO ONE A STANDARD REFERENCE ON THIS SHEET TO WAREHOUSE LOW WATERS	
1. Read letter identifying 100,000-foot contour on which the point lies.	X
2. Locate the 100,000-foot contour on the left of the point and read (LARGE) figure labeling the line either on the bottom margin or on the line itself.	
3. Locate the 100,000-foot contour on the right of the point and read (SMALL) figure labeling the line either on the left margin or on the line itself.	Y
4. Subtract the larger figure from the smaller figure and add one to the result.	
EXAMPLE REFERENCE: 100,000-foot contour on left margin is 1000 100,000-foot contour on right margin is 1000 1000 - 1000 = 0 0 + 1 = 1 Result: 1	



JOINT OPERATIONS GRAPHIC (AIR)



CONTOUR INTERVAL 500 FEET
WITH SUPPLEMENTARY CONTOURS AT 250 FEET

VERTICAL DATUM: MEAN SEA LEVEL
HORIZONTAL DATUM: INDIAN DATUM

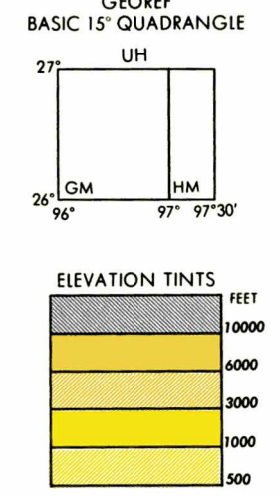
TRANSVERSE MERCATOR PROJECTION

BLUE NUMBERED LINES INDICATE THE 10,000-YARD INDIA ZONE GRID. EVEREST SPHEROID. THE LAST FOUR DIGITS OF THE GRID NUMBERS ARE OMITTED.

USERS SHOULD REFER TO CORRECTIONS, ADDITIONS, AND COMMENTS TO THE NSA OPERATIONAL HELP DESK: 1-800-455-0889, COMMERCIAL 314-283-4864; DSN 693-4864; OR WRITE TO: DIRECTOR, NATIONAL GEOSPATIAL INTELLIGENCE AGENCY, ATTN: ES, MAIL STOP L-86, 4800 SANGAMORE ROAD, BETHESDA, MD 20816-9003.

GLOSSARY

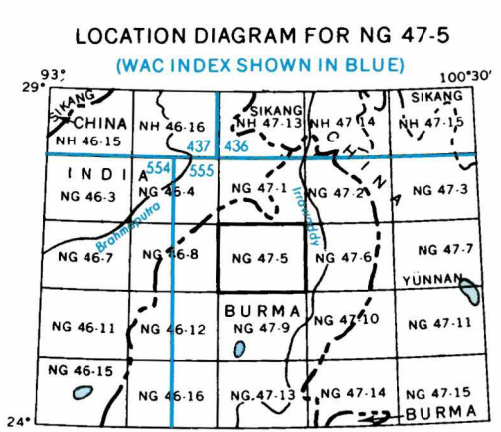
Bum	mountain, mountain range
Hka	stream
Hkasa	stream
Hingang	mountain range
Huyet	hill
Kale	mountain
Kawng	mountain
Ku	hill
Lim	mountain
Nam	mountain
Pung	mountain
Rai	mountain
Yu	stream



RELIABILITY OF THIS SHEET
(as determined by standard practices)

MAP FEATURE	DATE OF INFORMATION
ALL FEATURES	1967

COMPILED FROM BEST AVAILABLE SOURCE MATERIALS



SCALE 1:250,000
MAINGKWAW, BURMA

SERIES 1501 AIR SHEET NG 47-5 EDITION 1
COMPANION SERIES 1501 SHEET IS EDITION 1

NSN 7641014096167
NGA Ref No. 1501ANG4705