

SERIES 1501 AIR SHEET NG 46-15 EDITION 1

COMPANION SERIES 1501 SHEET IS EDITION 1

LEGEND

POPULATED PLACES

| | |
|-------------------|---------|
| Over 100,000 | BOMBAY |
| 50,000 to 100,000 | QUETTA |
| 10,000 to 50,000 | MEHSANA |
| 5,000 to 10,000 | Mercara |
| Less than 5,000 | Leh |

ROADS

| | |
|--|-------|
| Dual Highways under construction | ===== |
| All weather | ===== |
| Hard surface, two or more lanes wide | ===== |
| Hard surface, one lane wide | ===== |
| Loose or light surface, two or more lanes wide | ===== |
| Loose or light surface, one lane wide | ===== |
| Fair or dry weather, loose surface | ===== |
| Cart track | ----- |
| Foot path, trail | ----- |

RAILROADS

| | |
|--------------------------|-----------|
| Normal gauge 1.6m (5'6") | ====+==== |
| Narrow gauge | ====+==== |

BOUNDARIES

| | |
|-------------------|-------|
| International | ----- |
| Province or state | ----- |
| landmark feature | ----- |
| Mine | ----- |

TERRAIN ELEVATIONS

Highest elevation: **8325** feet located at 25°02'N, 93°49'E

Spot elevation, normal, critical: **+000**, **+0000**

Horizontal control point: **△**

HYDROGRAPHY

| | |
|-----------------------|-------|
| Depth curve fathoms | ----- |
| Falls, rapids | ----- |
| Salt evaporator | ----- |
| Swamp or marsh | ----- |
| Mangrove | ----- |
| Reef, limit of danger | ----- |
| Rocks, Sunken, Awash | ----- |
| Foreshore flat | ----- |
| Leaves | ----- |
| Unclassified stream | ----- |

Glacier, Glacial moraine

VEGETATION

| | |
|--|-------|
| Woods, brushwood, Plantation, Tropical grass | ===== |
|--|-------|

AERODROMES

| | |
|---|-------|
| Field limits with runway pattern | ===== |
| EDNA - None | ----- |
| 50 - Length of longest runway to nearest hundreds of feet | ----- |
| 50 - Length of longest runway to nearest hundreds of feet | ----- |
| 725 - Elevation | ----- |

SEAPLANE BASE

SEAPLANE EMERGENCY

HELIPORT

RADIO FACILITIES

| | |
|---------------------------|-------|
| RADIO RANGE (I/J/M) | ===== |
| MULTIPLE RADIO FACILITIES | ===== |
| CONTROLLED AIRSPACE | ===== |
| ADIZ | ===== |

VISUAL AIDS AND OBSTRUCTIONS

| | |
|--|-------|
| Obstruction | ===== |
| 1108 - Elevation of obstruction top, above sea level | ===== |
| (259) - Elevation of obstruction top, above ground level | ===== |
| Group obstruction | ===== |
| Radio facility obstruction | ===== |
| Power transmission line | ===== |
| Ocean station vessel (Normal position) | ===== |
| Visual ground sign | ===== |
| Aero light, Marine light | ===== |

CAUTION

AIR INFORMATION CURRENT THROUGH 11 MAY 1967

Consult Notices to Airmen (NOTAMS) and Flight Information Publications (FIPs) for the latest air information; the Chart Updating Manual (CHUM) for other chart revision information.

HIGHEST TERRAIN elevation for each 15 MINUTE QUADRANGLE is represented in THOUSANDS and HUNDREDS of feet. They are omitted where relief information is inadequate. A minus sign (-) following the figure indicates that the figure is based on an estimated elevation.

EXAMPLES:

51 81-

NOTES:

No obstructions 200 feet or more above ground level are known to exist within this area.

THE REPRESENTATION OF BOUNDARIES ON THIS SHEET IS NOT NECESSARILY AUTHORITATIVE.

MAGNETIC VARIATION FOR 1965 IS APPROXIMATELY 1° OVER THE ENTIRE AREA. (Annual rate of change: No change)

WARNING NOTE: SECURITY CLASSIFICATION IS BASED ON THE FACT OF EXISTENCE AND AVAILABILITY OF THIS GRAPHIC.

500,000 YARD (Small Letters) and 100,000 YARD (Large Letters) SQUARE IDENTIFICATIONS

TO OBTAIN A STANDARD REFERENCE ON THIS SHEET TO NEAREST 1,000 YARDS

SAMPLE POINT - TRIMING

1 Read letter identifying 100,000 Yard square or square the grid line.

2 Locate first VERTICAL grid line to LEFT of point and read LARGE letters showing the line number in the bottom margin, or on the line itself.

3 Estimate tenths from grid line to point.

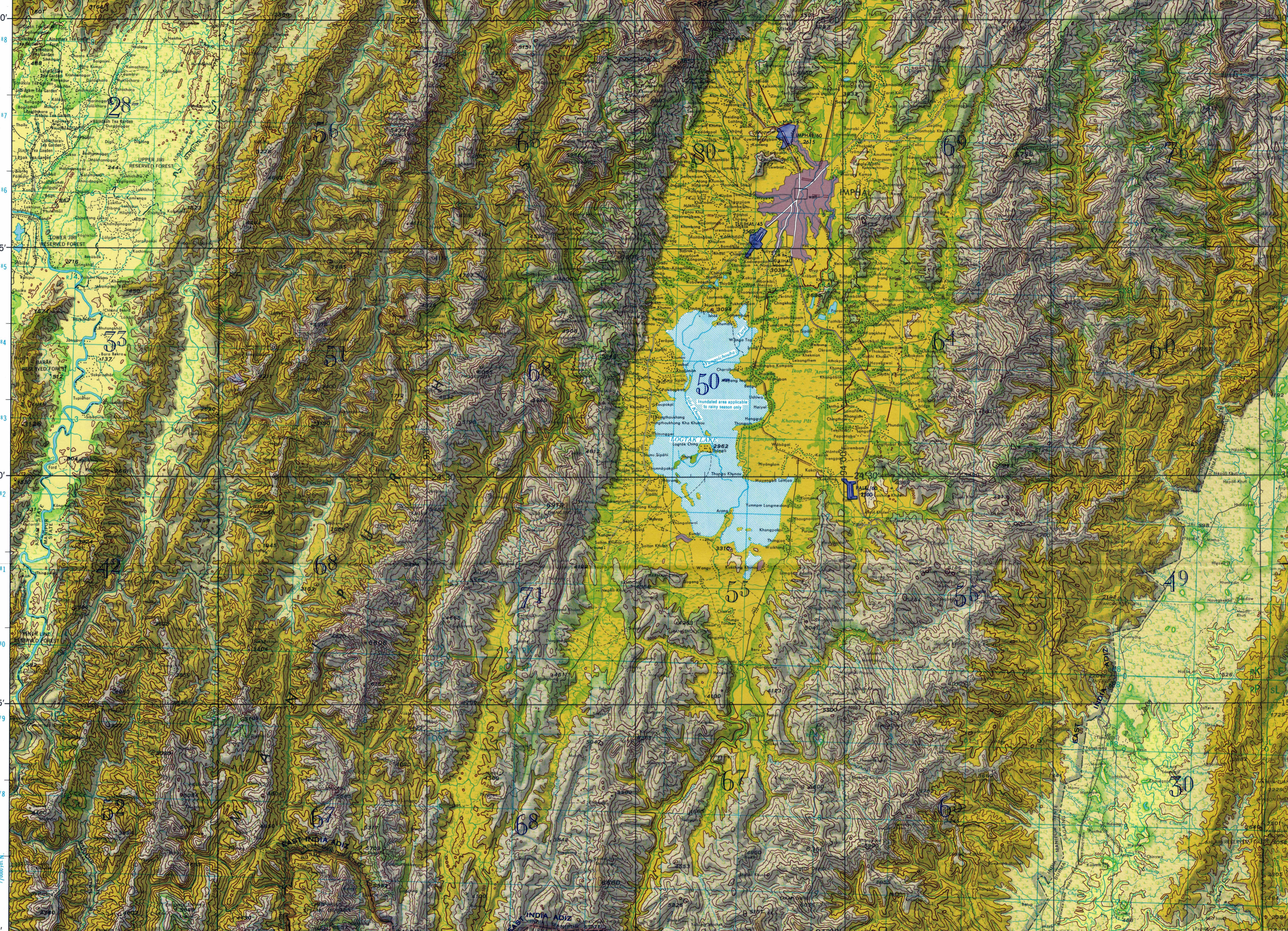
4 Locate first HORIZONTAL grid line above the point and read LARGE letters showing the line number in the left margin, or in the line itself.

5 Estimate tenths from grid line to point.

SAMPLE REFERENCE: 43237

79000

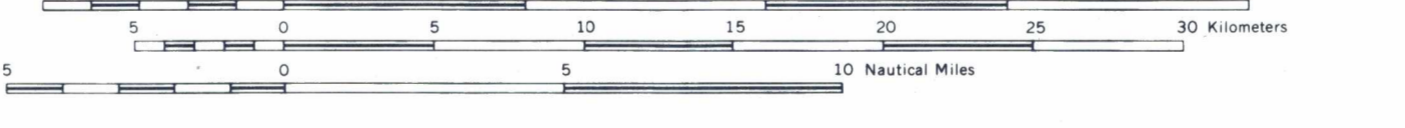
89237



93°00' 24°00' 93°30' 334,000yds E. 335 336 337 338 24°00' 339 340 341 342 343 344 345 346 347 348 349 350 24°00' 93°00' 93°15' 93°30' 93°45' 93°00' 93°15' 93°30' 93°45' 93°00' 93°15' 93°30' 93°45' 93°00' 93°15' 93°30' 93°45' 93°00' 93°15' 93°30' 93°45'

JOINT OPERATIONS GRAPHIC (AIR)

Scale 1:250,000



CONTOUR INTERVAL 500 FEET

VERTICAL DATUM: MEAN SEA LEVEL
HORIZONTAL DATUM: INDIAN DATUM

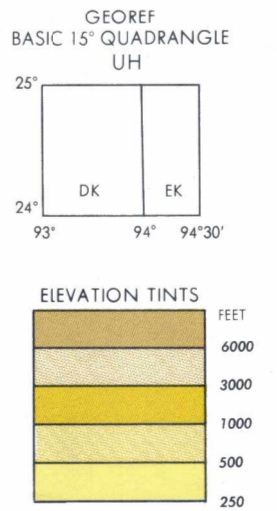
TRANSVERSE MERCATOR PROJECTION

BLUE NUMBERED LINES INDICATE THE 10,000 YARD ZONE II B GRID. EVEREST SPHEROID. THE LAST FOUR DIGITS OF THE GRID NUMBERS ARE OMITTED.

USERS SHOULD REFER CORRECTIONS, ADDITIONS AND COMMENTS TO THE NIMA OPERATIONAL HELP DESK: 1-800-455-0899; COMMERCIAL 914-263-4864; DSN 693-4864; OR WRITE TO: DIRECTOR, NATIONAL IMAGERY AND MAPPING AGENCY, ATTN: ES, MAIL STOP L-88, 4800 SANGAMORE ROAD, BETHESDA, MD 20818-5003

GLOSSARY

| | |
|--------|----------|
| Chaug | stream |
| Ching | mountain |
| Khal | stream |
| Khong | stream |
| Lam | stream |
| Lok | stream |
| Lui | stream |
| Mol | mountain |
| Nadi | stream |
| Pat | stream |
| Taung | mountain |
| Tural | stream |
| Vading | stream |

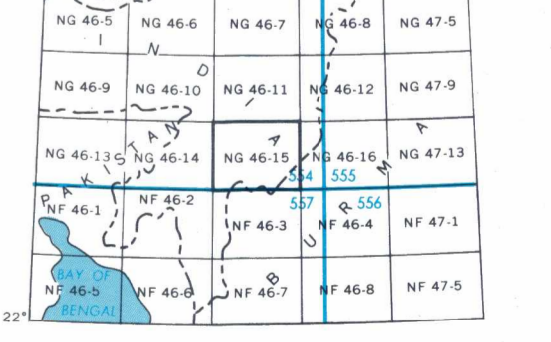


Reprinted by NIMA 10-2001

RELIABILITY OF THIS SHEET (as determined by standard practices)

| MAP FEATURE | DATE OF INFORMATION |
|---|---------------------|
| ALL FEATURES | 1966 |
| COMPILED FROM BEST AVAILABLE SOURCE MATERIALS | |

LOCATION DIAGRAM FOR NG 46-15 (WAC INDEX SHOWN IN BLUE)



SCALE 1:250,000 IMPHAL, INDIA

SERIES 1501 AIR SHEET NG 46-15 EDITION 1

AERONAUTICAL APPROACH CHARTS (CODE: AC) and/or AERONAUTICAL CHARTS (CODE: AGCI) completely within this area are discontinued. Those that are partially within this area should be retained until publication of the adjacent Joint Operations Graphic 1501 AIR. Consult the DOD Bulletin for publication and discontinuance notices.

NSN 7641014096071 ED. NO. 001
NIMA REF. NO. 1501ANG4615