

SERIES 1501 AIR
SHEET NO 46-12
EDITION 1
COMPANION SERIES 1501 SHEET IS EDITION 1

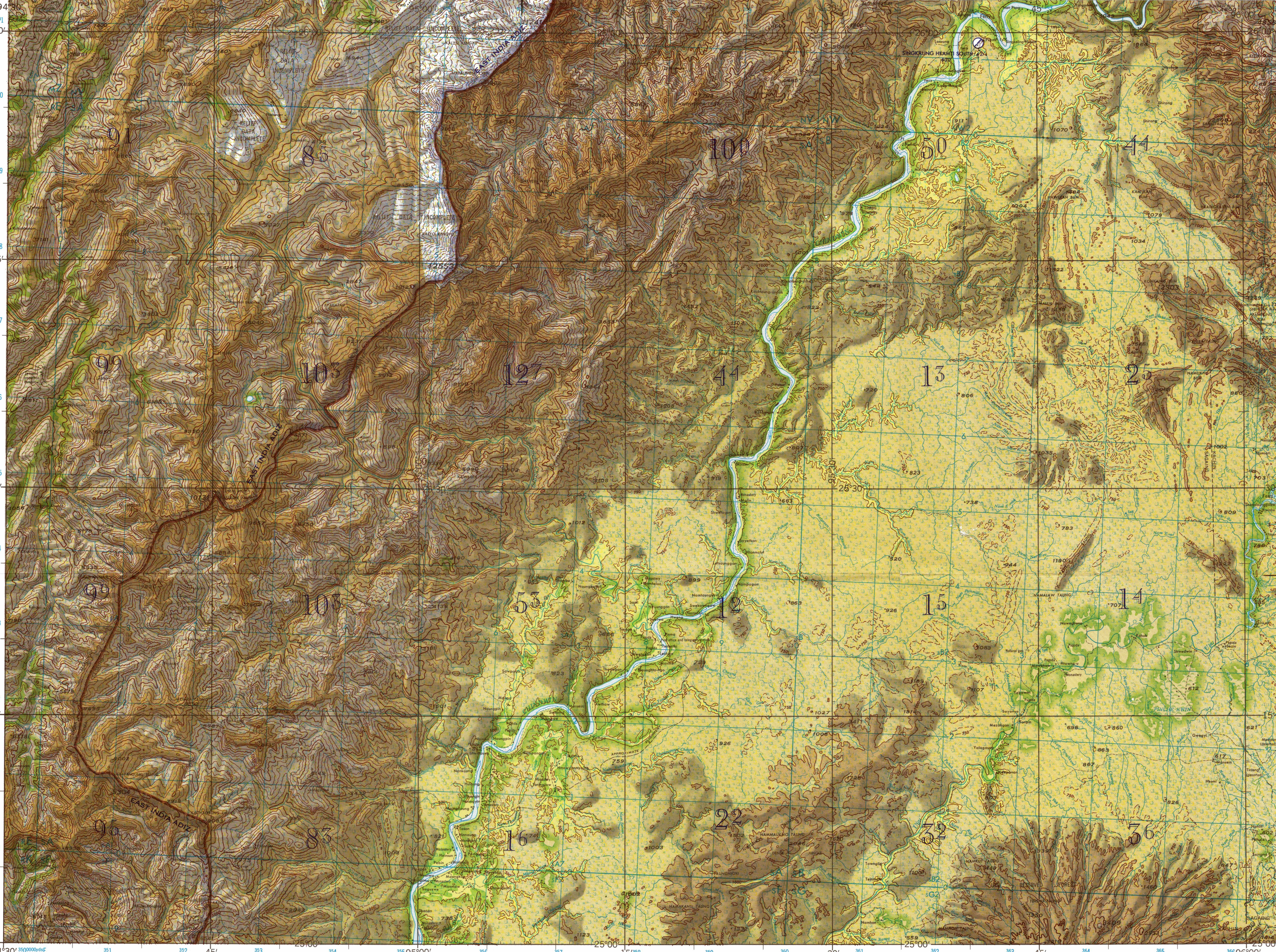
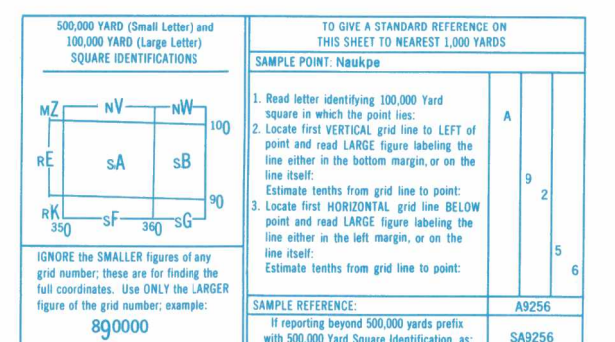
LEGEND

- POPULATED PLACES**
- Over 100,000 **BOMBAY**
 - 50,000 to 100,000 **QUETTA**
 - 10,000 to 50,000 **MEHSANA**
 - 5,000 to 10,000 Mercara
 - Less than 5,000 Lah
- ROADS**
- Dual Highways under construction
 - All weather
 - Hard surface, two or more lanes wide
 - Hard surface, one lane wide
 - Loose or light surface, two or more lanes wide
 - Loose or light surface, one lane wide
 - Fair or dry weather, loose surface
 - Cart track
 - Foot path, trail
- RAILROADS**
- Normal gauge 1.0m (3'3 1/4")
 - Narrow gauge
- BOUNDARIES**
- International
 - Province or state
 - Landmark feature
 - Mine
- TERRAIN ELEVATIONS**
- HIGHEST KNOWN elevation is **12553** feet at 25°41'N 95°02'E
Spot elevation Normal, Critical **000**, **0000**
Horizontal control point
± following elevation value indicates accuracy is not within 250 feet.
- HYDROGRAPHY**
- Depth curve bathymetry
 - Falls; Rapids
 - Salt evaporator
 - Swamp or marsh
 - Mangrove
 - Reef; Limit of danger
 - Rocks; Sunken; Awash
 - Foreshore flat
 - Levee
 - Unclassified stream
- VEGETATION**
- Woods-brushwood; Plantation; Tropical grass
- AERODROMES**
- Field limits with runway pattern **EDNA/50/725**
 - EDNA - Name
 - 50 - length of longest runway to nearest hundreds of feet
 - 725 - Elevation
 - Field limits, with runway pattern unknown
 - Field limits unknown, with runway pattern
 - Field limits and runway pattern unknown
- SEAPLANE BASE**
- SEAPLANE (EMERGENCY)**
- HELIPORT**
- RADIO FACILITIES**
- RADIO RANGE (F/M)
 - MULTI-FREQUENCY (F/M)
 - CONTROLLED AIRSPACE
 - ADIZ
- VISUAL AIDS AND OBSTRUCTIONS**
- Obstruction **1108 (239)**
 - 1108 - Elevation of obstruction top, above sea level
 - (239) - Elevation of obstruction top, above ground level
 - Group obstruction
 - Radio facility obstruction
 - Power transmission line
 - Ocean station vessel (Normal position)
 - Visual ground sign
 - Aero Light; Marine Light

CAUTION
AIR INFORMATION CURRENT THROUGH
9 MAY 1968
Consult Notices to Airmen (NOTAMS) and Flight Information Publications (FIPs) for the latest air information; the Chart Updating Manual (CHUM) for other chart revision information.

HIGHEST TERRAIN elevation for each 15 MINUTE QUADRANGLE is represented in THOUSANDS and HUNDREDS of feet. They are omitted where relief information is inadequate. A minus sign (-) following the figure indicates that the figure is based on an estimated elevation. EXAMPLES:
51 81-
MAGNETIC VARIATION FOR 1965 IS APPROXIMATELY
1°W OVER THE ENTIRE AREA
(Annual rate of change - no change)

NOTES:
No obstructions 200 feet or more above ground level are known to exist within this area.
THE REPRESENTATION OF INTERNATIONAL BOUNDARIES IS NOT NECESSARILY AUTHORITATIVE.
THE ALIGNMENT OF PRIMARY ADMINISTRATIVE BOUNDARIES IS APPROXIMATE



JOINT OPERATIONS GRAPHIC (AIR)

Scale 1:250,000
5 10 15 20 Statute Miles
5 10 15 20 25 30 Nautical Miles

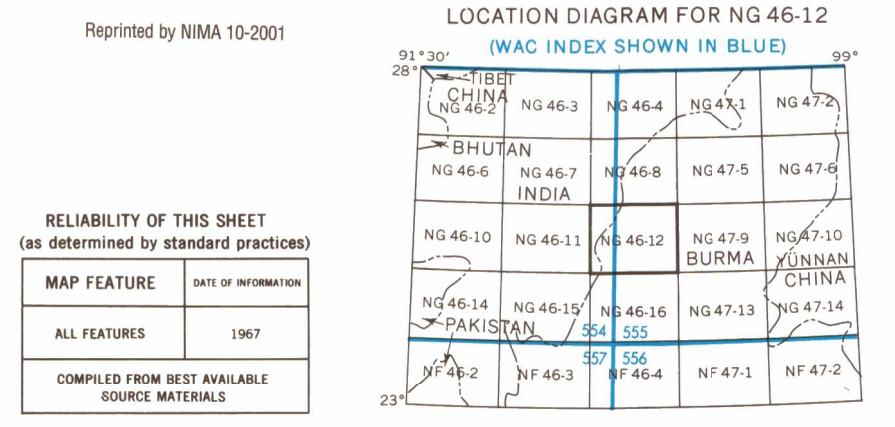
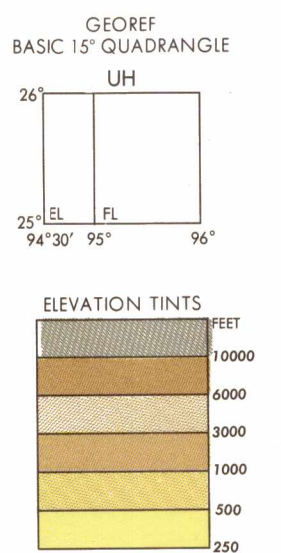
CONTOUR INTERVAL 500 FEET WITH SUPPLEMENTARY CONTOURS AT 250 FEET
RELIEF PARTIALLY SHOWN BY FORM LINES

VERTICAL DATUM: MEAN SEA LEVEL
HORIZONTAL DATUM: INDIAN DATUM
TRANSVERSE MERCATOR PROJECTION

BLUE NUMBERED LINES INDICATE THE 10,000 YARD INDIAN ZONE 18 GRID, EVEREST SPHEROID
THE LAST FOUR DIGITS OF THE GRID NUMBERS ARE OMITTED

USERS SHOULD REFER CORRECTIONS, ADDITIONS AND COMMENTS TO THE NIMA OPERATIONAL HELP DESK:
1-800-455-0808 COMMERCIAL 314-253-4864 CSN 693-8864 OR WRITE TO DIRECTOR, NATIONAL MAGNETRY AND MAPPING AGENCY, ATTN: ES, MAIL STOP L-86, 4600 SANGAMORE ROAD, BETHESDA, MD 20816-5003

- GLOSSARY**
- Bum.....mountain
 - Chaung.....stream
 - He-mu.....stream
 - He-mu.....stream
 - Hia.....stream
 - Hwe.....stream
 - Khong.....stream
 - Kwin.....swamp
 - Kyein.....hill
 - Maung.....stream
 - Mon.....stream
 - Mun.....stream
 - Nadi.....river, stream
 - Nam.....stream
 - Nee.....stream
 - Nyu.....stream, hill, mountain range
 - Pu-nu.....stream, mountain range
 - Taung.....mountain, mountain range
 - Taungdan.....mountain range
 - Ti.....stream



Scale 1:250,000
SAMANTHI, BURMA

SERIES 1501 AIR
SHEET NO 46-12
EDITION 1
COMPANION SERIES 1501 SHEET IS EDITION 1

AERONAUTICAL APPROACH CHARTS (CODE A/C) and/or AERONAUTICAL CHARTS (CODE A/C) completely within this area are discontinued. Those that are partially within this area should be retained until publication of the adjacent Joint Operations Graphic 1501 AIR. Consult the DOD Bulletin for publication and discontinuance notices.



NSN 7641014096225
NIMA REF. NO. 1501ANG4612