

SERIES 1501 AIR SHEET NG 46-9 EDITION 1

POPULATED PLACES
 First importance
 Second importance
 Third importance
 Fourth importance
 District Headquarters

ROADS
 Dual highway
 All weather, hard surface
 More than two lanes wide
 Two lanes wide
 One lane wide
 All weather, loose or light surface
 More than two lanes wide
 Two lanes wide
 One lane wide
 Fair or dry weather, loose surface
 Track; Trail
 Route marker

RAILROADS
 Normal gauge (1.68m/5'6")
 Narrow gauge
 Station location: known; unknown

BOUNDARIES
 International
 First-order administrative division

VEGETATION
 Woods: Scattered trees; Tropical grass

OTHER FEATURES
 Swamp: Land subject to inundation
 Spring: Well; Perennial; Intermittent
 Intermittent stream: Single; Double line
 Disappearing stream
 Intermittent lake; Dry lake
 Unsurveyed shoreline
 Horizontal control point; Landmark; Mine
 Levee
 Dam or lock
 Sand
 Dunes: Crescent; Lateral; Ripple

TERRAIN ELEVATIONS
 Spot elevation, Normal; Critical
 HIGHEST KNOWN elevation is 6316 feet at the following coordinates:
 Geographic: 25°32' N, 91°27' E
 Grid: 8B046

AERODROMES (Military or Civil)
 EDNA/50/A
 725

HELIPORT

VISUAL AIDS AND OBSTRUCTIONS
 Obstruction
 1108-Elevation of obstruction top, above sea level.
 (258)-Elevation of obstruction top, above ground level.
 Group obstruction
 Radio facility obstruction
 Power transmission line
 Visual ground sign
 Aero light: Marine light

RADIO FACILITIES
 RADIO RANGE LF/MF
 NDB-RNG
 PARIS
 MULTIPLE RADIO FACILITIES

CONTROLLED AIRSPACE
 ADIZ
 ATLANTIC ADIZ

CAUTION
 AIR INFORMATION CURRENT THROUGH 3 JUNE 1985
 Consult NOTAMS and Flight Information Publications for the latest air information; the DOD Aeronautical Chart Updating Manual or MOD (U.K.) Aeronautical Chart Amendment document, for other chart revision information.

CAUTION
 Vertical obstructions, including powerlines, have been extracted from the most reliable sources available. However, there is no assurance that all are shown, or that their locations or heights are exact.
 MAGNETIC VARIATION FOR 1985 IS APPROXIMATELY 1/2° WEST OVER THE ENTIRE AREA.
 (Annual rate of change 1" increase)

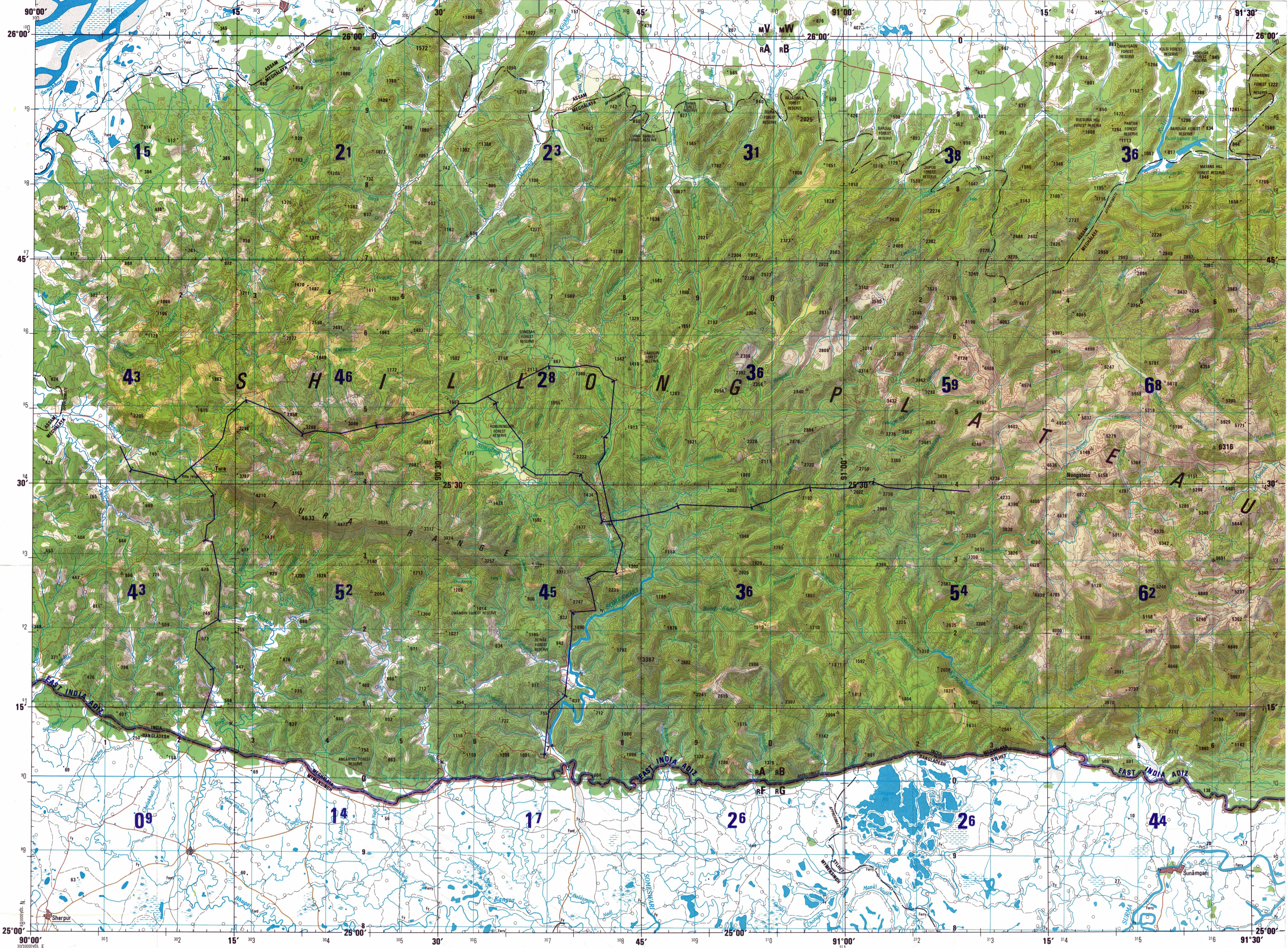
ATTENTION
 THIS CHART CONTAINS MAXIMUM ELEVATION FIGURES (MEF)
 The Maximum Elevation Figures shown in quadrangles bounded by ticked lines of latitude and longitude are represented in THOUSANDS and NUMBERS of feet above mean sea level. The MEF is based on information available concerning the highest known features in each quadrangle, including terrain and obstructions (trees, towers, antennas, etc.). In areas of extensive unrelieved relief, the MEF is shown by a wavy symbol across the area.
 EXAMPLE: 12,500 feet

LOCATION DIAGRAM (LONG INDEX SHOWN IN BLUE)

FEET	METERS	FEET	METERS
1000	305	10000	3048
900	274	9000	2743
800	244	8000	2438
700	213	7000	2134
600	183	6000	1829
500	152	5000	1524
400	122	4000	1219
300	91	3000	914
200	61	2000	610
150	46	1500	457
100	31	1000	305

SCALE 1:250,000
 TURA, INDIA; BANGLADESH

SERIES 1501 AIR SHEET NG 46-9 EDITION 1



Prepared and published by the Defense Mapping Agency Hydrographic/Topographic Center, Washington, D.C. Compiled in 1984.

ELEVATIONS IN FEET
 SCALE 1:250,000
 5 10 15 20 25 30 35 40 45 50 55 60 65 70 75 80 85 90 95 100
 5 10 15 20 25 30 35 40 45 50 55 60 65 70 75 80 85 90 95 100
 5 10 15 20 25 30 35 40 45 50 55 60 65 70 75 80 85 90 95 100
 5 10 15 20 25 30 35 40 45 50 55 60 65 70 75 80 85 90 95 100

CONTOUR INTERVAL 200 FEET
 BLACK NUMBERED LINES INDICATE THE 10,000 YARD INDIA ZONE III GRID, EVEREST SPHEROID.

REPRINTED BY NIMA 66-99
 RELIABILITY OF THIS GRAPHIC
 Compiled from best available source materials.
 Horizontal Datum: Indian Datum
 Vertical Datum: Mean Sea Level
 Transverse Mercator Projection
 NOTES
 Powerlines are shown except within populated place limits. Other obstructions are shown if they are 200 feet or more above ground level. See caution note.
 Road classification should be referred to with caution.
 On this graphic a lane is generally considered as being 3.05 to 3.66 meters (10 to 12 feet) in width.
 ALIGNMENT OF ALL BOUNDARIES IS APPROXIMATE.
 THE REPRESENTATION OF INTERNATIONAL BOUNDARIES IS NOT NECESSARILY AUTHORITY.

USERS SHOULD REFER TO CORRECTIONS, ADDITIONS, AND COMMENTS TO THE NIMA CUSTOMER HELP DESK: 1-800-455-0888; COMMERCIAL 314-260-5032; OR WRITE TO: DIRECTOR, NATIONAL IMAGERY AND MAPPING AGENCY, ATTN: CDD, MAIL STOP P-37, 4800 SANGAMORE ROAD, BETHESDA, MD 20818-6003.

NSN 7641014098207
 NIMA REF. NO. 1501ANG4609