

SERIES 1501 AIR SHEET NG 46-4 EDITION 1

COMPANION SERIES 1501 SHEET IS EDITION 1

LEGEND

POPULATED PLACES

- Over 100,000
- 50,000 to 100,000
- 10,000 to 50,000
- 5,000 to 10,000
- less than 5,000

ROADS

- Dual Highways under construction
- All weather
- Hard surface, two or more lanes wide
- Hard surface, one lane wide
- Loose or light surface, two or more lanes wide
- Loose or light surface, one lane wide
- Fair or dry weather, loose surface
- Cart track
- Foot path, trail

RAILROADS

- Normal gauge (48in. 156")
- Narrow gauge

BOUNDARIES

- International
- Province or state
- Landmark feature
- Mine

TERRAIN ELEVATIONS

- Highest elevation = 7428 feet located at 27°11'N, 95°48'E
- Spot elevation, normal critical
- Horizontal control point

HYDROGRAPHY

- Depth curve fathoms
- Falls; Rapids
- Salt evaporator
- Swamp or marsh
- Mangrove
- Reef; limit of danger
- Rocks; Salties; Aweel
- Foreshore flat
- Levee
- Unclassified stream
- Glacier; Glacial moraine

VEGETATION

- Woods; brushwood; plantation; Tropical grass

AERODROMES

- Field limits with runway pattern
- EDNA - Name
- 50 - length of longest runway to nearest hundreds of feet
- 4 - Soft or unimproved surface
- 725 - Elevation
- Field limits, with runway pattern unknown
- Field limits unknown, with runway pattern
- Field limits and runway pattern unknown

SEAPLANE BASE

SEAPLANE (EMERGENCY)

REPORT

RADIO FACILITIES

- RADIO RANGE (R/M/F)
- MULTIPLE RADIO FACILITIES

CONTROLLED AIRSPACE

ADIZ

VISUAL AIDS AND OBSTRUCTIONS

- Obstruction
- 1108 - Elevation of obstruction top, above sea level
- (239) - Elevation of obstruction top, above ground level
- Group obstruction
- Radio facility obstruction
- Power transmission line
- Ocean station vessel (Normal position)
- Visual ground sign
- Aero light; Marine light

CAUTION

AIR INFORMATION CURRENT THROUGH 18 JULY 1967

Consult Notices to Airmen (NOTAMs) and Flight Information Publications (FIPs) for the latest air information; the Chart Updating Manual (CHUM) for other chart revision information.

HIGHEST TERRAIN elevation for each 15 MINUTE QUADRANGLE is represented in THOUSANDS and HUNDREDS of feet. They are omitted where relief information is unobtainable. A white sign (see following figure) indicates that the figure is based on an estimated elevation.

EXAMPLES:

51 81-

MAGNETIC VARIATION FOR 1965 IS APPROXIMATELY 1°W OVER THE ENTIRE AREA. (Annual rate of change - no change)

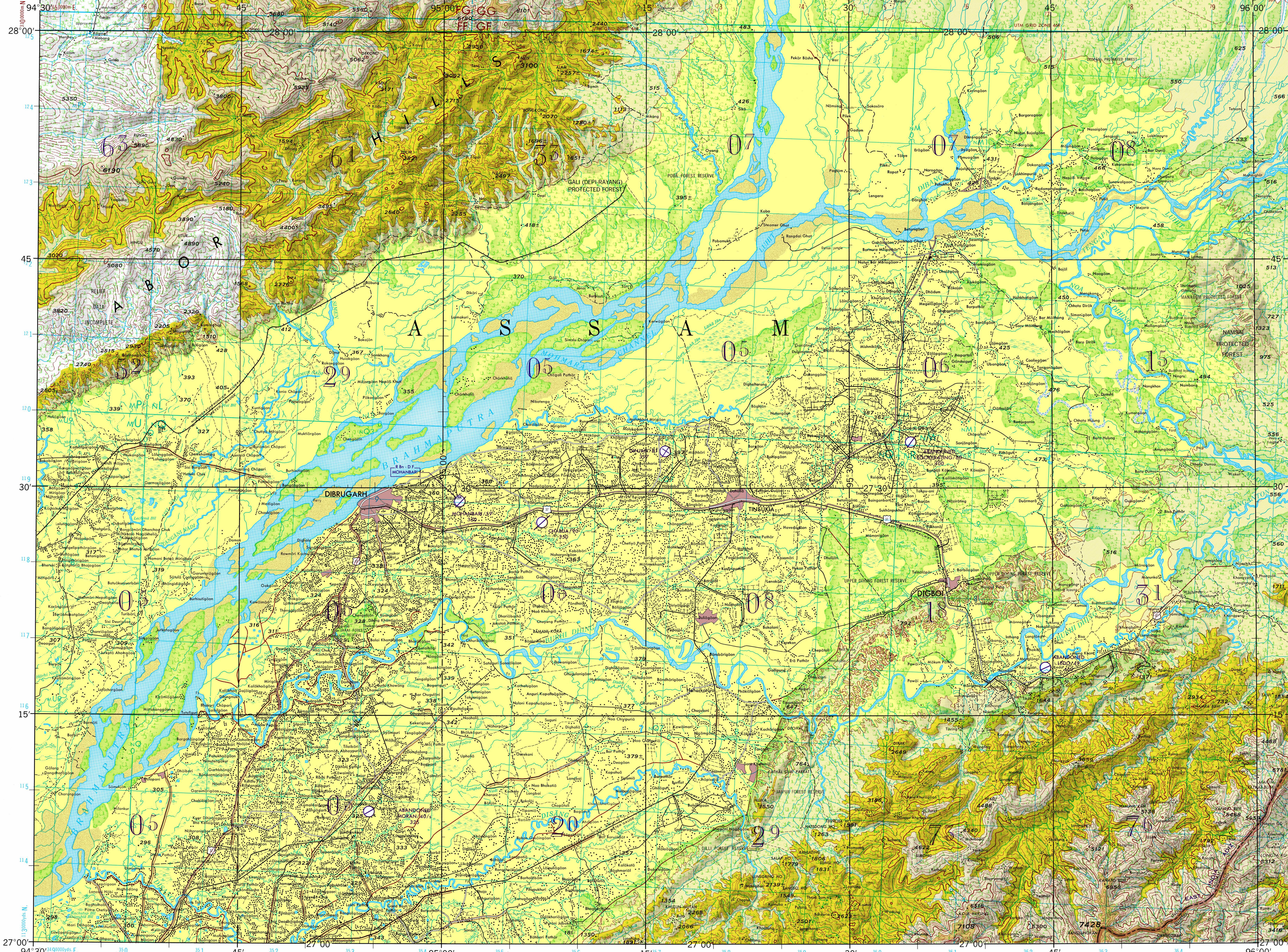
NOTES:

No obstructions 200 feet or more above ground level are known to exist within this area.

THE REPRESENTATION OF INTERNATIONAL BOUNDARIES IS NOT NECESSARILY AUTHORITY.

GRID ZONE DESIGNATION	TO OBTAIN A STANDARD REFERENCE ON THIS SHEET TO NEAREST 1000 METERS
28° 00' N 95° 00' E	SAMPLE POINT: 1000
28° 00' N 95° 00' E	1. Read letter identifying 100,000 meter square in which the point lies.
28° 00' N 95° 00' E	2. Locate first VERTICAL grid line to LEFT of point and read LARGE figure showing the line number in the bottom margin, or on the top.
28° 00' N 95° 00' E	3. Locate first HORIZONTAL grid line BELOW point and read LARGE figure showing the line number in the left margin, or on the top.
28° 00' N 95° 00' E	4. Add the two numbers to obtain the 1000 meter reference.
28° 00' N 95° 00' E	SAMPLE REFERENCE: 1000
28° 00' N 95° 00' E	1130000

GRID ZONE DESIGNATION	TO OBTAIN A STANDARD REFERENCE ON THIS SHEET TO NEAREST 100 YARDS
28° 00' N 95° 00' E	SAMPLE POINT: 1000
28° 00' N 95° 00' E	1. Read letter identifying 100,000 yard square in which the point lies.
28° 00' N 95° 00' E	2. Locate first VERTICAL grid line to LEFT of point and read LARGE figure showing the line number in the bottom margin, or on the top.
28° 00' N 95° 00' E	3. Locate first HORIZONTAL grid line BELOW point and read LARGE figure showing the line number in the left margin, or on the top.
28° 00' N 95° 00' E	4. Add the two numbers to obtain the 100 yard reference.
28° 00' N 95° 00' E	SAMPLE REFERENCE: 1000
28° 00' N 95° 00' E	1130000



JOINT OPERATIONS GRAPHIC (AIR)

Scale 1:250,000

0 5 10 15 20 25 30 Statute Miles

0 5 10 15 20 25 30 Kilometers

CONTOUR INTERVAL 500 FEET WITH SUPPLEMENTARY CONTOURS AT 250 FEET

VERTICAL DATUM: MEAN SEA LEVEL
HORIZONTAL DATUM: INDIAN DATUM

TRANSVERSE MERCATOR PROJECTION

BROWN NUMBERED LINES INDICATE THE 10,000 METER UNIVERSAL TRANSVERSE MERCATOR GRID, ZONE 46N, EVEREST SPHEROID

BLUE NUMBERED LINES INDICATE THE 10,000 METER UTM ZONE 46N GRID, EVEREST SPHEROID

THE LAST FOUR DIGITS OF THE GRID NUMBERS ARE OMITTED

USERS SHOULD REFER CORRECTIONS, ADDITIONS, AND COMMENTS TO THE NSA OPERATIONAL HELP DESK: 1-800-455-8986; COMMERCIAL 314-355-8986; DONORS-8986; OR WRITE TO DIRECTOR, NATIONAL GEOGRAPHIC-INTELLIGENCE AGENCY, ATTN: EML, MAIL STOP L-88, 4800 SANGAMORE ROAD, BETHESDA, MD 20818-9003

GLOSSARY

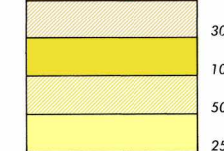
- Bil lake
- Bum mountain
- Hka stream
- Jin stream
- Jang stream
- Jo stream
- Ja stream
- Nadi stream
- Pani stream
- Rai stream
- Suti stream
- Wa stream
- Ya stream

GEOREF

BASIC 15' QUADRANGLE UH

28° 00' N
95° 00' E

ELEVATION TINTS



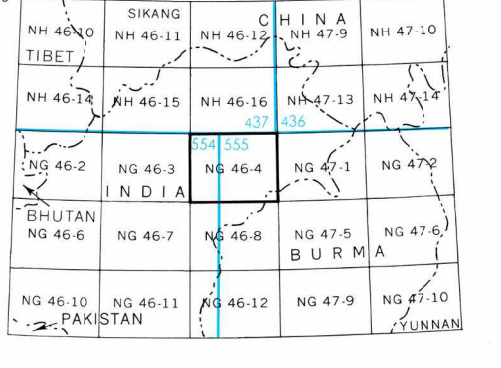
RELIABILITY OF THIS SHEET (as determined by standard practices)

MAP FEATURE DATE OF INFORMATION

ALL FEATURES 1967

COMPILED FROM BEST AVAILABLE SOURCE MATERIALS

LOCATION DIAGRAM FOR NG 46-4



SCALE 1:250,000
DIBRUGARH, INDIA

SERIES 1501 AIR SHEET NG 46-4 EDITION 1

COMPANION SERIES 1501 SHEET IS EDITION 1