

SERIES 1501 AIR SHEET NG 32-7 EDITION 1

- POPULATED PLACES**
- Over 100,000 **CAIRO**
 - 50,000 to 100,000 **NYALA**
 - 10,000 to 50,000 **Sarh**
 - 2,000 to 10,000 **Shandi**
 - Less than 2,000 **Murawi**
- ROADS**
- Dual highway **4 LANES DUAL**
 - All weather, hard surface **4 LANES**
 - More than two lanes wide **4 LANES**
 - Two lanes wide **4 LANES**
 - One lane wide **4 LANES**
 - All weather, loose or light surface **3 LANES**
 - More than two lanes wide **3 LANES**
 - Two lanes wide **3 LANES**
 - One lane wide **3 LANES**
 - Fair or dry weather, loose surface **3 LANES**
 - Cart track **3 LANES**
 - Footpath, trail **3 LANES**
 - Route marker **3 LANES**
- RAILROADS**
- Normal gauge, single track 1.44m (4'8 1/2") Double track **3**
 - Narrow gauge **3**
- BOUNDARIES**
- International **1**
 - First-order administrative **2**
- OTHER FEATURES**
- Area name **AGAGHEH**
 - Mine or quarry **AGAGHEH**
 - Campsite; Ruins; Watermill **AGAGHEH**
 - School; Church; Landmark **AGAGHEH**
 - Mosque; Modern shrine **AGAGHEH**
 - Small reservoir or cistern **AGAGHEH**
 - Well; Perennial; Intermittent; Spring **AGAGHEH**
 - Underground aqueduct with shafts **AGAGHEH**
 - Sakha or Dry lake; Intermittent lake **AGAGHEH**
 - Single line intermittent stream; Wadi **AGAGHEH**
 - Marsh or swamp; Land subject to inundation **AGAGHEH**
 - Mound; Levee **AGAGHEH**
 - Sand dunes; Distorted surface **AGAGHEH**
 - Sand; flat or rolling; Transverse dunes **AGAGHEH**
 - Horizontal control point **AGAGHEH**
- VEGETATION**
- Woods, brushwood; Scattered trees **NONE**
 - Orchard; vineyard; Scrub **NONE**
- HYDROGRAPHY**
- Rocks, uncovering or awash **NONE**
 - Exposed wreck **NONE**
 - Limit of danger; Reef **NONE**
 - Foreshore flat **NONE**
 - Depth curve; Lighthouse **NONE**
- TERRAIN ELEVATIONS**
- Spot elevation, normal; critical **1448 1840**
 - HIGHEST KNOWN elevation is **3724** feet at the following coordinates: **26°00'N, 9°12'E**
 - Geographic **26°00'N, 9°12'E**
 - Grid **NP2377**
 - Following elevation value indicates accuracy is not within 100 feet
- AERODROMES (Military or Civil)**
- Runway pattern known **EDNA/50/1/2**
 - Field limits and runway pattern unknown **725**
- HELIPORT**
- RADIO FACILITIES
 - VOR VORTAC **EDNA**
 - TACAN VOR/DME **EDNA**
 - RADIO RANGE LF/MF **EDNA**
 - MULTIPLE RADIO FACILITIES **EDNA**
 - CONTROLLED AIRSPACE **ATLANTIC ADIZ**
- VISUAL AIDS AND OBSTRUCTIONS**
- Obstruction **1108 (259)**
 - 1108-Elevation of obstruction top, above sea level (259)-Elevation of obstruction top, above ground level
 - Group obstruction **1108 (259)**
 - Radio facility obstruction **1108 (259)**
 - Power transmission line **1108 (259)**
 - Visual ground sign **1108 (259)**
 - Aero light; Marine light **1108 (259)**

CAUTION
Vertical obstructions, including powerlines, have been omitted from this chart unless otherwise indicated. However, there is no assurance that all are shown, or that their location or height are exact.

CAUTION
AIR INFORMATION CURRENT THROUGH 26 MARCH 1995
Consult NOTAMS and Flight Information Publications for the latest air information; the DMA Aeronautical Chart Updating Manual or MOD (U.K.) Aeronautical Chart Amendment document, for other chart revision information.

MAGNETIC VARIATION THROUGHOUT CHART AREA FOR 1995 IS APPROXIMATELY 0°15' WEST
Annual rate of change 4' decrease

ATTENTION
THIS CHART CONTAINS MAXIMUM ELEVATION FIGURES (MEF)
The Maximum Elevation Figures shown in quadrangles bounded by ticked lines of latitude and longitude are represented by THOUSANDS and HUNDREDS of feet above mean sea level. The MEF is based on information available concerning the highest known features in each quadrangle, including terrain and obstructions (trees, towers, antennas, etc.).
EXAMPLE: 12,500 feet 125

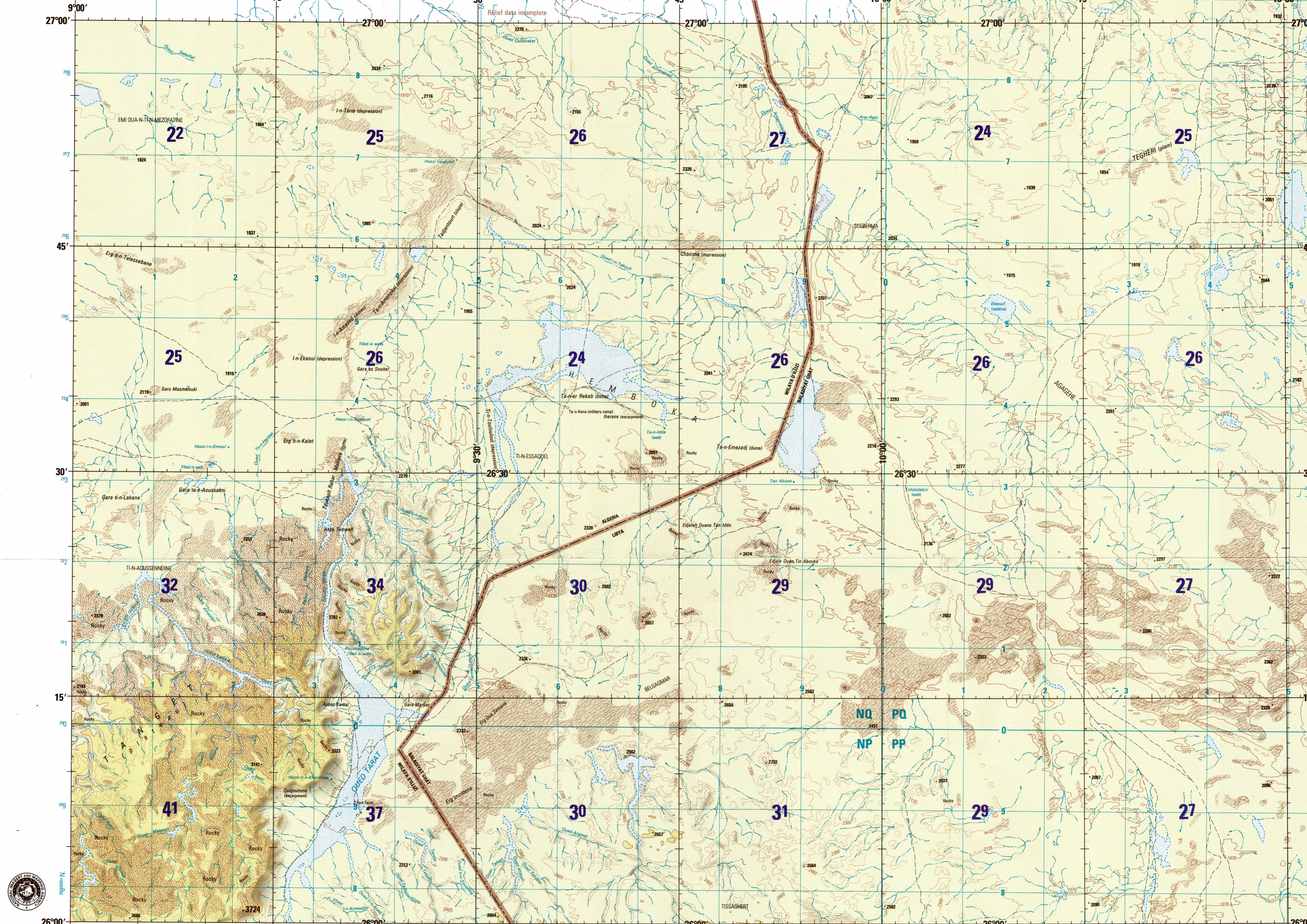
LOCATION DIAGRAM
Boundary Representation is Not Necessarily Authoritative
(TIC INDEX SHOWN IN BLUE)
(WAC INDEX SHOWN IN RED/BROWN)

NH 32-13	NH 32-14	NH 32-15	NH 32-16	NH 32-17
NG 32-1	NG 32-2	NG 32-3	NG 32-4	NG 32-5
NG 32-6	NG 32-7	NG 32-8	NG 32-9	NG 32-10
NG 32-11	NG 32-12	NG 32-13	NG 32-14	NG 32-15
NG 32-16	NG 32-17	NG 32-18	NG 32-19	NG 32-20

LIMITED DISTRIBUTION
Distribution authorized to DoD, IAW 16 U.S.C. §1170 & 45.
Release authorized to U.S. DoD contractors, IAW 48 C.F.R. 125.2-200-000. For other requests to Distribution, NIMA, ATTN: Release Officer, Stop # 25, Derry, NH 03033.
Date of this version is published.

SCALE 1:250,000
FORT TARAT, ALGERIA; LIBYA

SERIES 1501 AIR SHEET NG 32-7 EDITION 1



JOINT OPERATIONS GRAPHIC (AIR)

SCALE 1:250,000

CONTOUR INTERVAL APPROXIMATELY 165 FEET
BLUE NUMBERED LINES INDICATE THE 1000 METER UNIVERSAL TRANSVERSE MERCATOR GRID, ZONE 32, WORLD GEODETIC SYSTEM 1984 ELLIPSOID

CONVERSION OF ELEVATIONS

FEET	METERS	FEET	METERS
1000	305	10000	3048
900	274	9000	2743
800	244	8000	2438
700	213	7000	2134
600	183	6000	1829
500	152	5000	1524
400	122	4000	1219
300	91	3000	914
200	61	2000	610
150	46	1500	457
100	31	1000	305

GLOSSARY

- Alba... hill, mountain
- Albat... hill, mountain
- Baladlyat... first-order administrative division
- Edjeleh... hill
- Erg... dune
- Gara... butte, hill, mesa
- Hassi... well
- Inhar... wadi
- Qued... wadi
- Tan... spring, well
- Wilyaya... first-order administrative division

RELIABILITY OF THIS GRAPHIC
No obstructions 200 feet or more above ground level are known to exist in this area.
BOUNDARY REPRESENTATION IS NOT NECESSARILY AUTHORITATIVE.
ALIGNMENT OF ALL BOUNDARIES IS APPROXIMATE.
Road classification should be referred to with caution.

NOTES
Reprinted by NIMA 12-97

Horizontal Datum: World Geodetic System-1984
Vertical Datum: Mean Sea Level
Transverse Mercator Projection

NSN 7641014209020
NIMA STOCK NO. 1501ANG3207