

SERIES 1501 AIR SHEET NG 29-2 EDITION 1

- POPULATED PLACES
- Over 100,000
 - 50,000 to 100,000
 - 10,000 to 50,000
 - 2,000 to 10,000
 - Less than 2,000
- ROADS
- Dual highway
 - All weather, hard surface, two or more lanes wide
 - All weather, loose or light surface, two or more lanes wide
 - All weather, hard surface, one lane wide
 - All weather, loose or light surface, one lane wide
 - Fair or dry weather loose surface
 - Cart track
 - Footpath, trail
- RAILROADS
- Normal gauge 1.44m (48.5")
 - Narrow gauge
- BOUNDARIES
- International
 - Primary administrative
 - Secondary
 - Mine, Mosque
- VEGETATION
- Woods
 - Palm trees, Orchards
- HYDROGRAPHY
- Well, Spring
 - Depth curves
 - Wrecks, Exposed, Sunken
 - Rocks, Awaah, Sunken
 - Limits of Danger, Reef
 - Wadi
 - Sobkha
 - Foreshore flats

- TERRAIN ELEVATIONS
- HIGHEST KNOWN elevation is 2067 feet at 27°50'N, 10°10'W
 - Spot elevations, normal, critical
 - 1824 5922
 - ± following elevation value indicates accuracy is not within 100 feet
- ASPHALTES Military or Civil
- EDNA, 50/s
 - EDNA, 725
 - EDNA - None
 - 50 - Length of longest runway to nearest hundreds of feet
 - ± - Soil or embossed surface
 - u - Unknown surface
 - 725 - Elevation
- Field limits with runway pattern unknown
- Field limits unknown, with runway pattern
- Field limits and runway pattern unknown
- SEAPLANE BASE
- SEAPLANE EMERGENCY
- HELIPORT
- RADIO AIDS TO NAVIGATION
- VHF OMNI RANGE (VOR)
 - VORTAC
 - TACAN
 - YOR with DME
 - OTHERS
- CONTROLLED AIRSPACE
- ADIZ ATLANTIC ADIZ
- VISUAL AIDS AND OBSTRUCTIONS
- Obstruction
 - 1108 - Elevation of obstruction top above sea level
 - (239) - Elevation of obstruction top above ground level
 - Group obstruction
 - Radio facility obstruction
 - Power transmission line
 - Visual ground sign
 - Aero light

- CAUTION
- AIR INFORMATION CURRENT THROUGH 6 JULY 1973
- Consult NOTAMS and Flight Information Publications for the latest air information; the DOD Aeronautical Chart Updating Manual or MCO (U.K.) Aeronautical Chart Amendment document, for other chart revision information.
- LINE OF EQUAL MAGNETIC VARIATION FOR 1970
- (Annual rate of change 7' decrease)
- MAXIMUM TERRAIN ELEVATIONS
- Maximum Terrain elevation figures, centered in the area bounded by ticked lines of LATITUDE and LONGITUDE, are represented in THOUSANDS and HUNDREDS of feet, BUT DO NOT INCLUDE ELEVATIONS OF VERTICAL OBSTRUCTIONS
- EXAMPLE: 51

LOCATION DIAGRAM

(IONIC INDEX SHOWN IN BLUE)

(WAC INDEX SHOWN IN BROWN)

| | | | |
|-----------|-----------|-----------|----------|
| 27° 30' N | 10° 30' W | 10° 00' W | 9° 30' W |
| 27° 00' N | 10° 30' W | 10° 00' W | 9° 30' W |
| 27° 00' N | 10° 00' W | 9° 30' W | 9° 00' W |
| 27° 30' N | 10° 00' W | 9° 30' W | 9° 00' W |

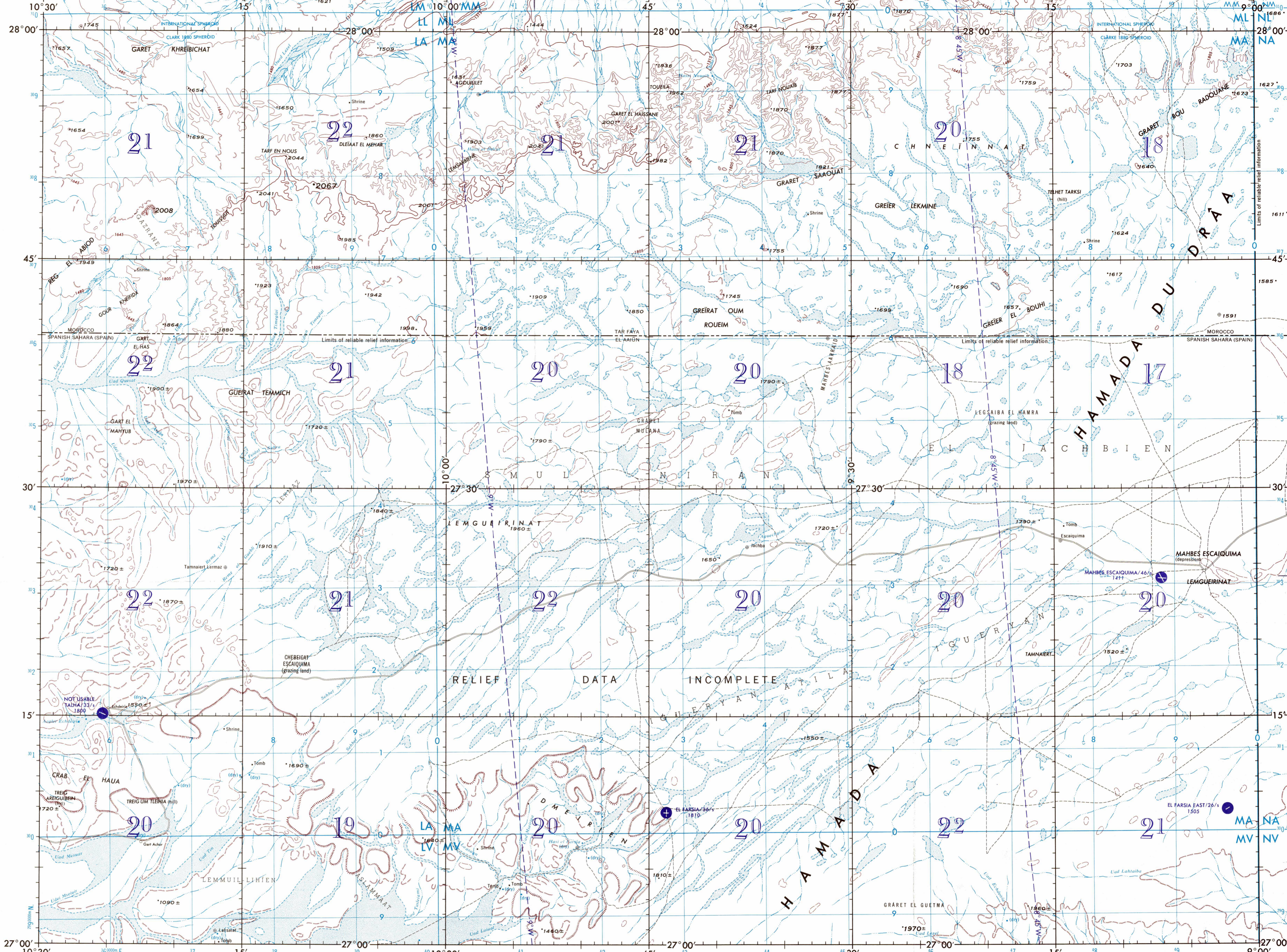
CONVERSION OF ELEVATIONS

| FEET | METERS | FEET | METERS |
|-------|--------|--------|--------|
| 1000 | 305 | 10000 | 3048 |
| 2000 | 610 | 20000 | 6096 |
| 3000 | 915 | 30000 | 9144 |
| 4000 | 1220 | 40000 | 12192 |
| 5000 | 1525 | 50000 | 15180 |
| 6000 | 1830 | 60000 | 18168 |
| 7000 | 2135 | 70000 | 21156 |
| 8000 | 2440 | 80000 | 24144 |
| 9000 | 2745 | 90000 | 27132 |
| 10000 | 3050 | 100000 | 30120 |

SCALE 1:250,000

ECHDEIRIA, SPANISH SAHARA; MOROCCO

SERIES 1501 AIR SHEET NG 29-2 EDITION 1



Prepared and published by the Defense Mapping Agency Aerospace Center, St. Louis Air Force Station, Missouri 63118. Compiled May 1973.

JOINT OPERATIONS GRAPHIC (AIR)

Scale 1:250,000

0 5 10 15 20 25 30 Statute Miles

0 5 10 15 20 25 30 Kilometers

0 5 10 15 20 25 30 Nautical Miles

CONTOUR INTERVAL APPROXIMATELY 165 FEET

RELIEF PARTIALLY SHOWN BY FORM LINES AND HACHURES

BLUE NUMBERED LINES INDICATE THE 10,000 METER UNIVERSAL TRANSVERSE MERCATOR GRID, ZONE 29, CLARKE 1880 SPHEROID

SAMPLE 1000 METER GRID SQUARE

SAMPLE 1,000 METER REFERENCE

1. Read letters marking the 100,000 meter square in which the point lies.

2. Read sign number, starting the vertical grid line with the letter.

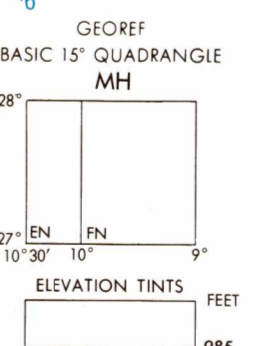
3. Read sign number, starting the horizontal grid line with the letter.

4. Estimate meters (1,000 meters) from the point to the grid line.

Example: AB 1234

USERS SHOULD REFER CORRECTIONS, ADDITIONS, AND COMMENTS TO THE NIMA OPERATIONAL HELP DESK 1-800-455-0899; COMMERCIAL 314-263-4864; DSN 693-4864; OR WRITE TO: DIRECTOR, NATIONAL IMAGERY AND MAPPING AGENCY, ATTN: ES, MAIL STOP 1-88, 4650 SANGAWHOCK ROAD, BETHESDA, MD 20815-5003

- GLOSSARY
- Aaglet - well
 - Crab - ridge
 - Diseah - hill
 - Feidat - wadi
 - Garet - (hill)
 - Gart - hill
 - Gour - hill
 - Greier - depression
 - Greier - grazing land
 - Greier - depression
 - Greier - depression
 - Greier - depression
 - Hamada - plateau
 - Hasi - well
 - Hasi - well
 - Oued - wadi
 - Reg - ridge
 - Sahel - wadi
 - Taf - cliff
 - Uad - wadi
 - Udei - wadi
 - Udan - wadi



REPRINTED BY NIMA 8/02

RELIABILITY OF THIS GRAPHIC (as determined by standard practice)

PLOTTING ACCURACY

| CYCLE ASSURANCE | AREA | AREA |
|-----------------|---------|---------|
| Horizontal | 1400 ft | 3000 ft |
| Vertical | 85 ft | 85 ft |

GRAPHIC FEATURE

| AREA I | AREA II |
|--------|---------|
| 1971 | 1971 |

NOTES:

THIS GRAPHIC IS NOT AN AUTHORITY ON INTERNATIONAL BOUNDARIES.

No obstructions 200 feet or more above ground level are known to exist in this area.

A line is generally considered as being a minimum of 2.5 meters (8 ft) in width.

Horizontal Datum: Undetermined

Vertical Datum: Mean Sea Level

Transverse Mercator Projection

NSN 7641014097149

NIMA REF. NO. 1501ANG2902

ED. NO. 001