

SERIES 1501 AIR SHEET NF 47-14 EDITION 1

- LEGEND**
- POPULATED PLACES**
- Over 100,000
 - 50,000 to 100,000
 - 10,000 to 50,000
 - 5,000 to 10,000
 - Less than 5,000
- ROADS**
- Dual Highways Under construction
 - All weather
 - Hard surface, two or more lanes wide
 - Hard surface, one lane wide
 - Loose or light surface, two or more lanes wide
 - Loose or light surface, one lane wide
 - Fair or dry weather, loose surface
 - Cart track
 - Foot path, trail
- RAILROADS**
- Normal gauge 1.0m (3'3")
 - Narrow gauge
- BOUNDARIES**
- International
 - Province or state
 - Landmark feature
 - Mine
- TERRAIN ELEVATIONS**
- HIGHEST KNOWN elevation **6939** feet at 20°37'N, 97°30'E
 Spot elevation Normal, Critical **.768 .1549**
 Horizontal control point

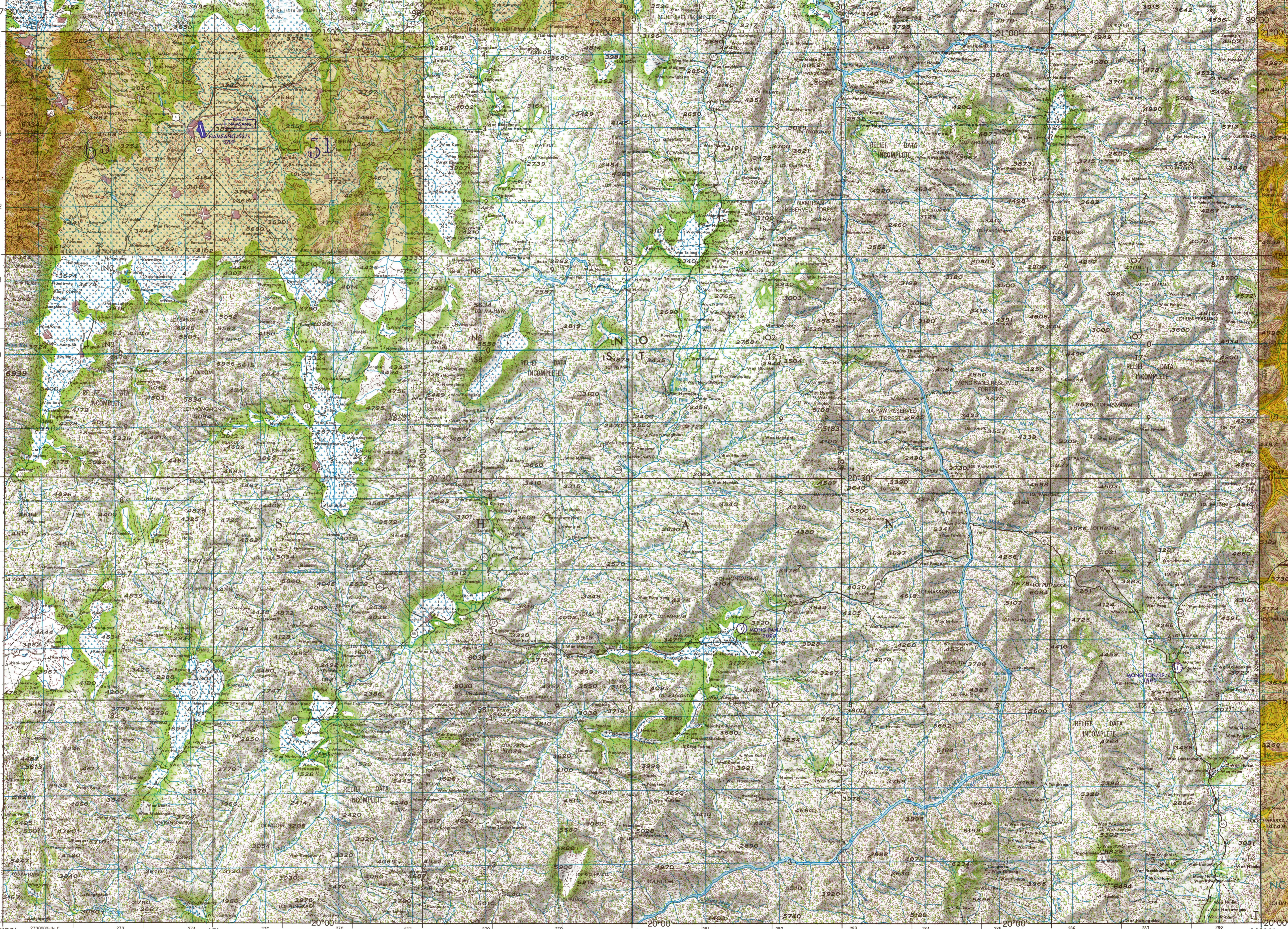
- HYDROGRAPHY**
- Falls, Rapids
 - Soft evaporator
 - Swamp or marsh
 - Mangrove
 - Reef, limit of danger
 - Rocks: Sunken, Awash
 - Foreshore flat
 - level
 - Unclassified stream
 - Glacier, Glacial moraine
- VEGETATION**
- Wooded lowland, Plantation, Tropical grass
- AERODROMES**
- Field limits with runway pattern
 - EDNA - Name
 - 50 - length of longest runway to nearest hundreds of feet
 - 4 - Soft or unimproved surface
 - Unknown surface
 - 725 - Elevation
 - Field limits, with runway pattern unknown
 - Field limits unknown, with runway pattern
- SEAPLANE BASE**
- SEAPLANE (EMERGENCY)**
- HELIPORT**
- RADIO FACILITIES**
- RADIO RANGE (M/FM)
 - MULTIPLE RADIO FACILITIES
- CONTROLLED AIRSPACE**
- ADIZ
- VISUAL AIDS AND OBSTRUCTIONS**
- Obstruction
 - 1108 - Elevation of obstruction top, above sea level
 - (259) - Elevation of obstruction top, above ground level
 - Group obstruction
 - Radio facility obstruction
 - Power transmission line
 - Ocean station vessel (Normal position)
 - Visual ground sign
 - Aero light: Marine light

CAUTION
 AIR INFORMATION CURRENT THROUGH 2 MAY 1968
 Consult Notices to Airmen (NOTAMs) and Flight Information Publications (FIPs) for the latest air information; the Chart Updating Manual (CHUM) for other chart revision information

HIGHEST TERRAIN elevation for each 15 MINUTE QUADRANGLE is represented in THOUSANDS and HUNDREDS of feet. They are omitted where relief information is inadequate. A minus sign (-) following the figure indicates that the figure is based on an estimated elevation. EXAMPLES:
51 81-
 MAGNETIC VARIATION FOR 1965 IS APPROXIMATELY 0°45'W OVER THE ENTIRE AREA.
 (Annual rate of change) - no change

NOTES:

- No obstructions 200 feet or more above ground level are known to exist within this area.
- THE REPRESENTATION OF INTERNATIONAL BOUNDARIES IS NOT NECESSARILY AUTHORITY.
- A lane is generally considered as being 8 to 15 feet (2.44 to 4.56 meters) in width.
- Lane information is not available for loose surface roads.



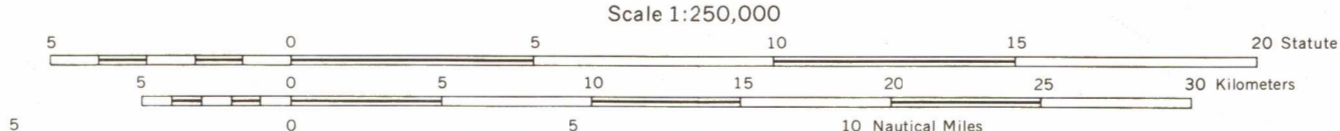
Prepared under the direction of the Defense Intelligence Agency and published by the Aeronautical Chart and Information Center, U.S. Air Force, St. Louis, Missouri, 63118. Compiled from maps and intelligence information available as of June 1967.

JOINT OPERATIONS GRAPHIC (AIR)

REPRINTED BY NIMA 8/02

Lithographed by ACIC 5/68

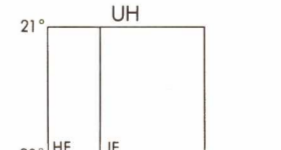
LOCATION DIAGRAM FOR NF 47-14 (WAC INDEX SHOWN IN BLUE)



GLOSSARY

- Ban.....village
- Hee.....stream
- Loi.....mountain, mountain range
- Me.....stream
- Nam.....stream
- Wan.....village

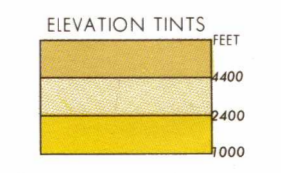
GEOREF BASIC 15 QUADRANGLE



RELIABILITY OF THIS SHEET (as determined by standard practices)

| MAP FEATURE | DATE OF INFORMATION |
|--------------|---------------------|
| ALL FEATURES | 1967 |

COMPILED FROM BEST AVAILABLE SOURCE MATERIALS



SCALE 1:250,000
 MÔNG PAN, BURMA
 SERIES 1501 AIR SHEET NF 47-14 EDITION 1

AERONAUTICAL APPROACH CHARTS (CODE:ACI) and/or AERONAUTICAL CHARTS (CODE:AGC) completely within this area are discontinued. Those that are partially within this area should be retained until publication of the adjacent Joint Operations Graphic (JOG) AIR. Consult the DOD Bulletin for publication and discontinuance notices.

| 50,000 YARD (Great Britain) and 50,000 METRE (European) SQUARE IDENTIFICATIONS | TO GIVE A STANDARD REFERENCE ON THIS SHEET TO BUSINESS-LIKE USERS | | | | |
|---|---|----|----|----|---|
| <table border="1"> <tr><td>IN</td><td>LO</td></tr> <tr><td>IS</td><td>LI</td></tr> </table> | IN | LO | IS | LI | 1. Read letter identifying 50,000 yard square in which the point is located. 2. Locate the vertical and the horizontal line either in the bottom margin, or in the top margin. Estimate northings from grid line to point. Estimate eastings from grid line to point. Example: Northings from grid line to point: 1190000 Eastings from grid line to point: 158472 |
| IN | LO | | | | |
| IS | LI | | | | |

CONTOUR INTERVAL 200 FEET
 RELIEF PARTIALLY SHOWN BY FORM LINES
 VERTICAL DATUM: MEAN SEA LEVEL
 HORIZONTAL DATUM: INDIAN DATUM

TRANSVERSE MERCATOR PROJECTION
 BLUE NUMBERED LINES INDICATE THE 10,000 YARD INDIAN ZONE 472, EVEREST SPHEROID
 THE LAST FOUR DIGITS OF THE GRID NUMBERS ARE OMITTED

BLACK NUMBERED LINES INDICATE THE 10,000 YARD INDIAN ZONE 472, EVEREST SPHEROID
 THE LAST FOUR DIGITS OF THE GRID NUMBERS ARE OMITTED

USERS SHOULD REFER CORRECTIONS, ADDITIONS, AND COMMENTS TO THE NIMA OPERATIONAL HELP DESK: 1-800-455-0899; COMMERCIAL 314-263-4864; DSN 693-4864; OR WRITE TO: DIRECTOR, NATIONAL IMAGERY AND MAPPING AGENCY, ATTN: ES, MAIL STOP 1188, 4600 SANGHAR ROAD, BETHESDA, MD 20816-5003.

NSN 7641014096224
 NIMA REF. NO. 1501ANF4714