

SERIES 1501 AIR SHEET NF 47-9 EDITION 2
COMPANION SERIES 1501 SHEET IS EDITION 1

LEGEND

POPULATED PLACES

- Over 100,000
- 50,000 to 100,000
- 10,000 to 50,000
- 5,000 to 10,000
- Less than 5,000

RAANGOON BASSEIN SAGAING

ROADS

- Dual Highways Under construction
- All weather
- Hard surface, two or more lanes wide
- Hard surface, one lane wide
- Loose or light surface, two or more lanes wide
- Loose or light surface, one lane wide
- Fair or dry weather, loose surface
- Cart track
- Foot path, trail

RAILROADS

- Narrow gauge 1 m. (3.31)
- Narrow gauge

BOUNDARIES

- International
- Province or state
- Landmark feature
- Me

TERRAIN ELEVATIONS

HIGHEST KNOWN elevation is **8173** feet at 21°33'N 97°23'E
Spot elevation Normal, Critical
Horizontal control point

HYDROGRAPHY

- Falls, Rapids
- Soft evaporator
- Swamp or marsh
- Mangrove
- Reef, Line of danger
- Rocks, Sunken, Awash
- Foreshore flat
- Levee
- Unclassified stream
- Glacier, Glacial moraine

VEGETATION

- Wood, bamboo-wood, Pigeonite, Tropical grass

AERODROMES

- Field limits with runway pattern
- EDNA - Name
- 50 - Length of longest runway to nearest hundreds of feet
- Soft or unpaved surface
- 725 - Elevation
- Field limits, with runway pattern unknown
- Field limits unknown, with runway pattern
- Field limits and runway pattern unknown

SEAPLANE BASE

SEAPLANE (EMERGENCY)

HELIPORT

RADIO FACILITIES

- RADIO RANGE (FM)
- MULTIPLE RADIO FACILITIES
- CONTROLLED AIRSPACE
- ADIZ
- VISUAL AIDS AND OBSTRUCTIONS
- Obstruction
- T108 - Elevation of obstruction top, above sea level
- (239) - Elevation of obstruction top, above ground level
- Group obstruction
- Radio facility obstruction
- Power transmission line
- Ocean station vessel (Normal position)
- Visual ground sign
- Aero light, Marine light

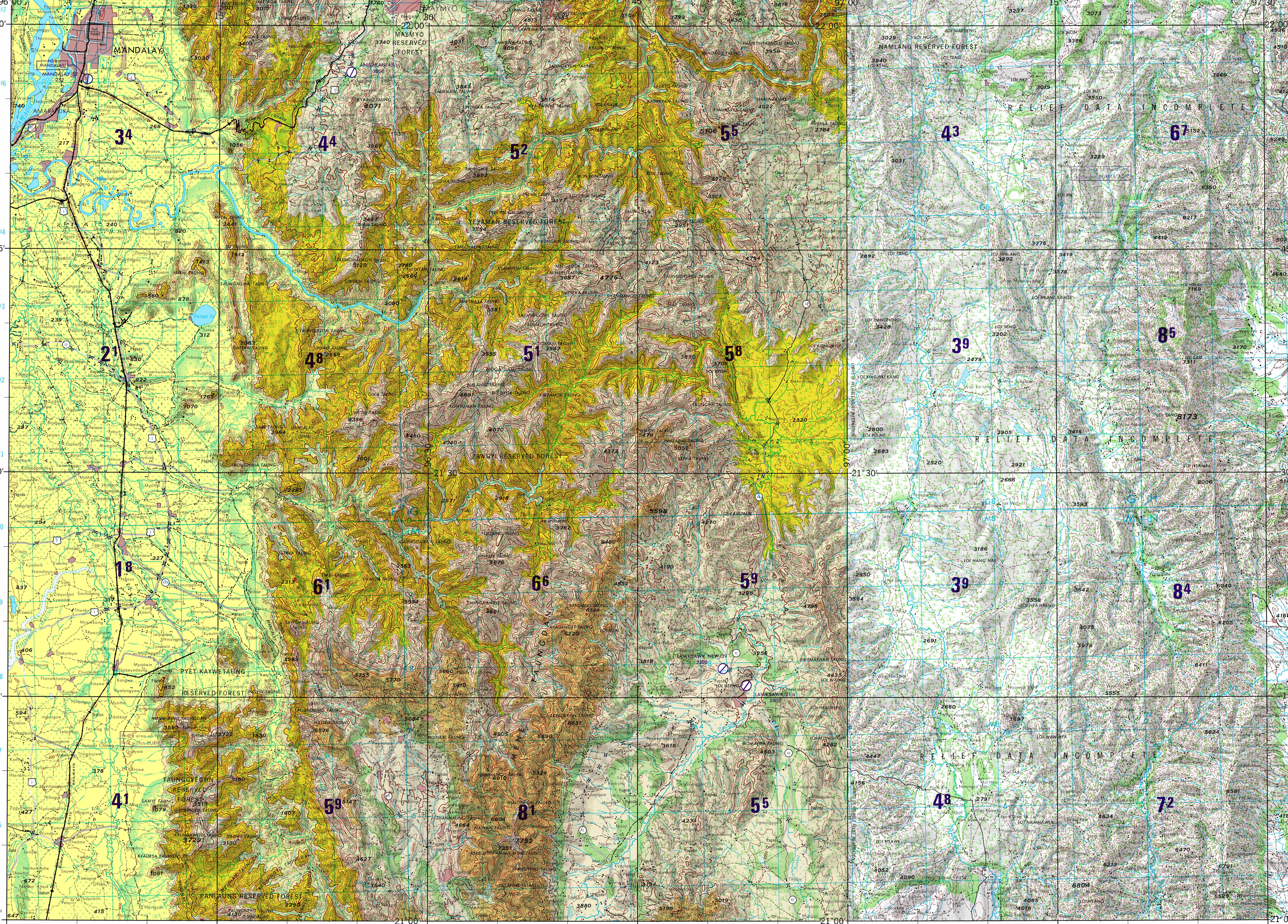
CAUTION

AIR INFORMATION CURRENT THROUGH 14 NOVEMBER 1978
Consult Notices to Airmen (NOTAMs) and Flight Information Publications (FIPs) for the latest air information; the Chart Updating Manual (CHUM) for other chart revision information.

MAGNETIC VARIATION FOR 1975 IS APPROXIMATELY 0°45' W OVER THE ENTIRE AREA
(Annual rate of change, 1' decrease)

NOTES:

- No obstructions 200 feet or more above ground level are known to exist within this area.
- THE REPRESENTATION OF INTERNATIONAL BOUNDARIES IS NOT NECESSARILY AUTHORITY.
- THE ALIGNMENT OF THE PRIMARY ADMINISTRATIVE BOUNDARIES IS APPROXIMATE.
- CAUTION: Power transmission line information on this sheet is incomplete. Position and alignment of those shown are approximate.



ATTENTION

THIS CHART CONTAINS MAXIMUM ELEVATION FIGURES (MEF)

The Maximum Elevation Figures shown in quadrangles bounded by ticked lines of latitude and longitude are represented in THOUSANDS and HUNDREDS of feet above mean sea level. The MEF is based on information available concerning the highest known feature in each quadrangle, including terrain and obstructions (trees, towers, antennas, etc.). In areas of extensive available relief, the MEF is shown by a note spaced across the area.

EXAMPLE: 12,500 feet **125**

SCALE 1:250,000
MANDALAY, BURMA

SERIES 1501AIR SHEET NF 47-9 EDITION 2
COMPANION SERIES 1501 SHEET IS EDITION 1

JOINT OPERATIONS GRAPHIC (AIR)

Scale 1:250,000

5 0 5 10 15 20 25 30 Statute Miles
5 0 5 10 15 20 25 30 Nautical Miles

CONTOUR INTERVAL 200 FEET
RELIEF PARTIALLY SHOWN BY FORM LINES

VERTICAL DATUM: MEAN SEA LEVEL
HORIZONTAL DATUM: INDIAN DATUM
TRANSVERSE MERCATOR PROJECTION

BLUE NUMBERED LINES INDICATE THE 10,000 FOOT MORAINE ZONE (I. S. BIRD, EVEREST SPHEROID)
THE LAST FOUR DIGITS OF THE GRID NUMBERS ARE OMITTED

NOTE: Refer all corrections on this graphic to COMMANDER, AERONAUTICAL CHART AND INFORMATION CENTER, SECOND AND ARSENAL, ST. LOUIS, MISSOURI 63118. ATTN: ACDB.

GLOSSARY

- Chaug stream
- Haug stream
- Hee stream
- In lake, swamp
- Kan pond, swamp
- Lo mountain
- Mar village
- Me stream
- Myang stream
- Nam river
- Taung mountain range
- Wau mountain range
- Ye stream
- Yo stream

RELIABILITY OF THIS SHEET
(as determined by standard practices)

MAP FEATURE	DATE OF INFORMATION
ALL FEATURES	1967

COMPILED FROM BEST AVAILABLE SOURCE MATERIALS

LOCATION DIAGRAM FOR NF 47-9 (WAC INDEX SHOWN IN BLUE)

ELEVATION TINTS

FEET	TINT
7000	Lightest tint
4000	Light tint
2000	Medium tint
1000	Dark tint
500	Very dark tint
0	Black

GRID

21° 30' 00" N
97° 30' 00" E

TO USE A STANDARD REFERENCE ON THIS CHART TO MEASURE 1:250,000

SAMPLE POINT NUMBER

1. Read value showing 100,000 feet
2. Locate the 100,000 feet contour line on the chart and read the value on the left side of the chart.
3. Estimate tenths from grid line to point.
4. Locate the 100,000 feet contour line on the chart and read the value on the right side of the chart.
5. Estimate tenths from grid line to point.

SAMPLE REFERENCE

1250000