

SERIES 1501 AIR SHEET NF 46-16 EDITION 2

COMPANION SERIES 1501 SHEET IS EDITION 1

LEGEND

POPULATED PLACES

- Over 100,000
- 50,000 to 100,000
- 10,000 to 50,000
- 5,000 to 10,000
- Less than 5,000

ROADS

- Dual Highways under construction
- All weather
- Hard surface, two or more lanes wide
- Hard surface, one lane wide
- Loose or light surface, two or more lanes wide
- Loose or light surface, one lane wide
- Fair or dry weather, loose surface
- Cart track
- Foot path, trail

RAILROADS

- Normal gauge (48.5")
- Narrow gauge

BOUNDARIES

- International
- Province or state
- Localities
- Mine

TERRAIN ELEVATIONS

Highest known elevation is 4981 feet at 20°55'N, 95°15'E

Spot elevation, normal: critical

Horizontal contour interval: 1000, 2000

HYDROGRAPHY

- Depth curve fathoms
- Falls, Rapids
- Salt excretion
- Swamp or marsh
- Mangrove
- Reef, limit of danger
- Rocks, Suckers, Awash
- Foreshore flat
- Levee
- Unclassified stream
- Glacier, Glacial moraine

VEGETATION

- Woods, brushwood, plantation; Tropical grass

AERODROMES

- Field limits with runway pattern
- EDNA - Normal
- 50 - length of longest runway to nearest hundreds of feet
- 5 - soft or unimproved surface
- 725 - Elevation
- Field limits, with runway pattern unknown
- Field limits unknown, with runway pattern
- Field limits and runway pattern unknown

HELIPORT

RADIO FACILITIES

- RNC
- HURN
- RADIO RANGE (R/F)
- MULTIPLE RADIO FACILITIES
- CONTROLLED AIRSPACE
- ADIZ - ATLANTIC ADIZ

VISUAL AIDS AND OBSTRUCTIONS

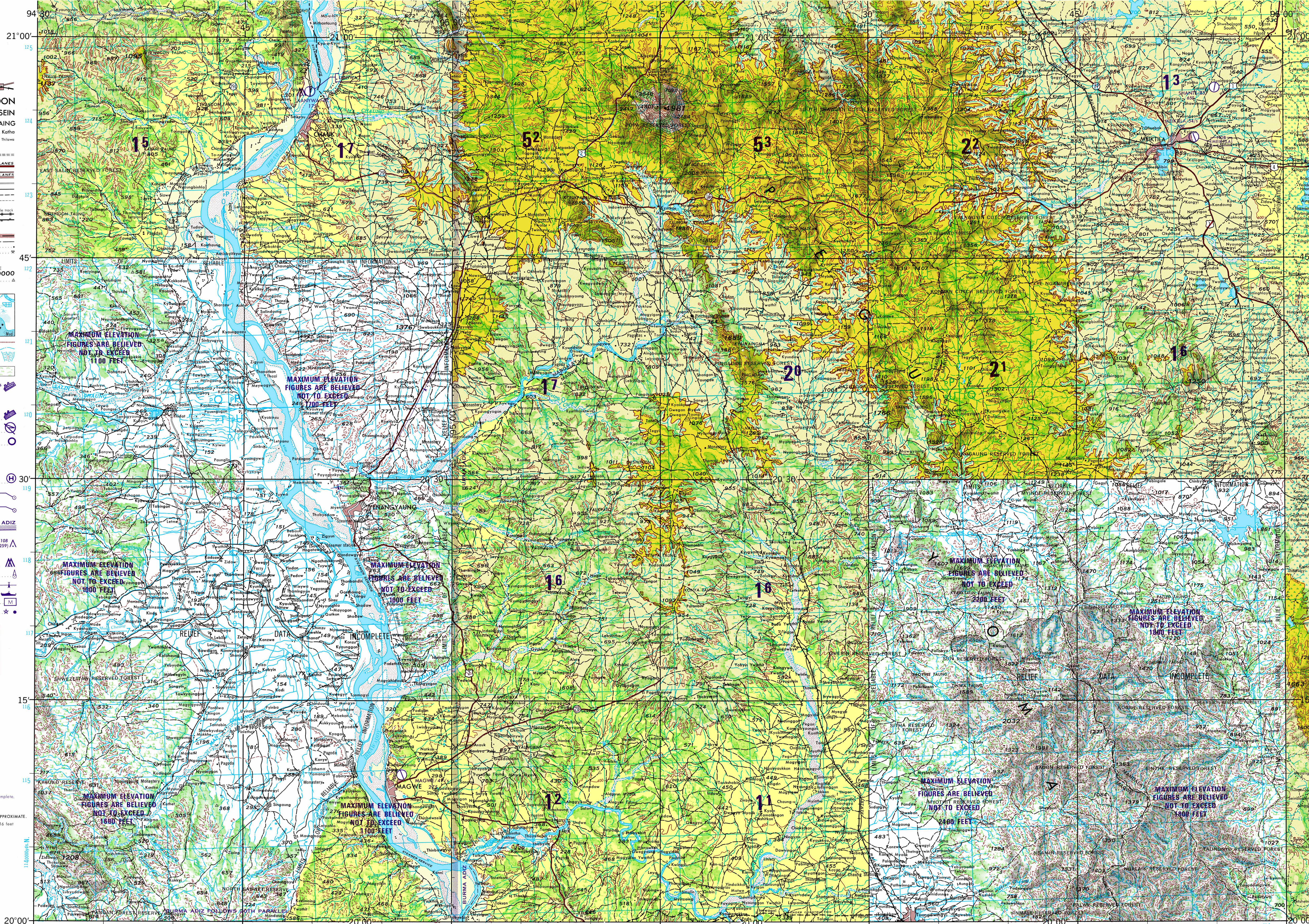
- Obstruction
- 1108 - Elevation of obstruction top, above sea level
- (259) - Elevation of obstruction top, above ground level
- Group obstruction
- Radio facility obstruction
- Power transmission line
- Ocean station vessel (Normal position)
- Visual ground sign
- Aero light, Marine light

CAUTION

AIR INFORMATION CURRENT THROUGH 17 NOVEMBER 1978

Consult Notices to Airmen (NOTAMS) and Flight Information Publications (FIPs) for the latest air information; the Chart Updating Manual (CIUM) for other chart revision information

MAGNETIC VARIATION FOR 1975 IS APPROXIMATELY 0°45' W OVER THE ENTIRE AREA (Annual rate of change, 1' decrease)



TO OBTAIN A STANDARD REFERENCE TO THIS SHEET TO NEAREST 100 YARDS

EXAMPLE POINT COORDINATE

+	0	+	10
+	10	+	10
+	10	+	10
+	10	+	10

EXAMPLE REFERENCE

114 0000

DISTRIBUTION LIMITED—DESTROY WHEN NO LONGER NEEDED

SCALE 1:250,000

YENANGYAUNG, BURMA

SERIES 1501 AIR SHEET NF 46-16 EDITION 2

COMPANION SERIES 1501 SHEET IS EDITION 1

ATTENTION

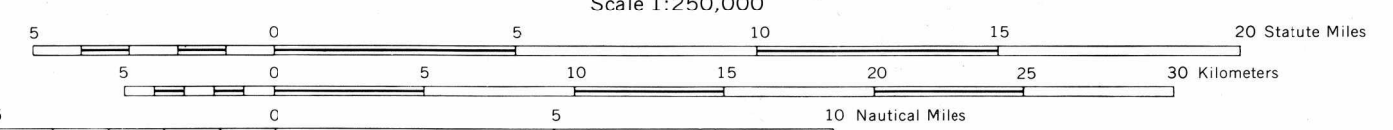
THIS CHART CONTAINS MAXIMUM ELEVATION FIGURES (MEF)

The Maximum Elevation Figures shown in quadrangles bounded by ticked lines of latitude and longitude are represented in THOUSANDS and HUNDREDS of feet above mean sea level. The MEF is based on information available concerning the highest known feature in each quadrangle, including terrain and obstructions (trees, towers, antennas, etc.). In areas of extensive unreliable relief, the MEF is shown by a note spaced across the area.

EXAMPLE: 12,500 feet

125

JOINT OPERATIONS GRAPHIC (AIR)



INTERVAL OF APPROXIMATE AND ACCURATE CONTOURS 200 FEET RELIEF PARTIALLY SHOWN BY FORM LINES

VERTICAL DATUM: MEAN SEA LEVEL

HORIZONTAL DATUM: INDIAN DATUM

TRANSVERSE MERCATOR PROJECTION

BLUE NUMBERED LINES INDICATE THE 10,000 YARD INDIA ZONE 'B' GRID. EXERCISE SPHEROID THE LAST FOUR DIGITS OF THE GRID NUMBERS ARE OMITTED

NOTE: Refer all corrections on this graphic to COMMANDER AERONAUTICAL CHART AND INFORMATION CENTER SECOND AND ARSENAL ST. LOUIS, MISSOURI 63118. ATTN: ACDC.

GLOSSARY

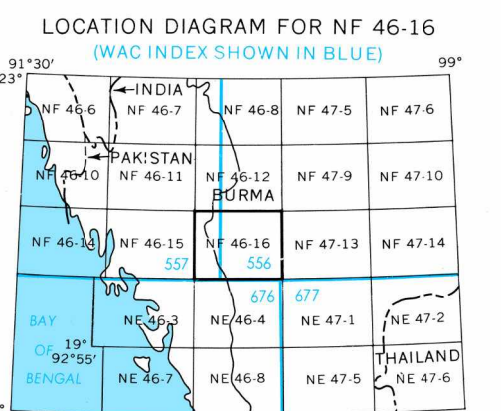
- Chaung: stream
- Mwayng: stream
- Taung: hill

RELIABILITY OF THIS SHEET

(as determined by standard practices)

MAP FEATURE	DATE OF INFORMATION
ALL FEATURES	1967

COMPILED FROM BEST AVAILABLE SOURCE MATERIALS



SERIES 1501 AIR SHEET NF 46-16 EDITION 2

COMPANION SERIES 1501 SHEET IS EDITION 1