

SERIES 1501 AIR SHEET NF 46-8 EDITION 2

COMPANION SERIES 1501 SHEET IS EDITION 1

LEGEND

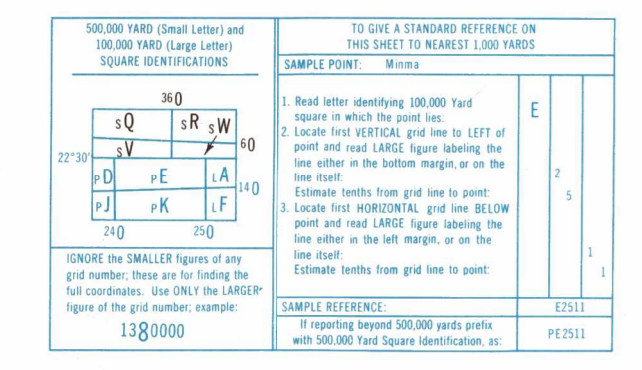
- POPULATED PLACES**
 - Over 100,000
 - 50,000 to 100,000
 - 10,000 to 50,000
 - 5,000 to 10,000
 - Less than 5,000
- ROADS**
 - Dual Highways Under construction
 - All weather
 - Hard surface, two or more lanes wide
 - Hard surface, one lane wide
 - Loose or light surface, two or more lanes wide
 - Loose or light surface, one lane wide
 - Fair or dry weather, loose surface
 - Cart track
 - Foot path, trail
- RAILROADS**
 - Normal gauge Int. (3.3')
 - Narrow gauge
- BOUNDARIES**
 - International
 - Province or state
 - Landmark feature
 - Mine
- TERRAIN ELEVATIONS**
 - HIGHEST KNOWN elevation is **2581** feet at 22°30'N, 94°36'E
 - Spot elevation-Normal: Critical
 - Horizontal control point
- HYDROGRAPHY**
 - Falls, Rapids
 - Salt exposer
 - Swamp or marsh
 - Mangrove
 - Reef, limit of danger
 - Rocks, Sunkers, Awash
 - Foreshore flat
 - Leaves
 - Unclassified stream
 - Glacier, Glacial moraine
- VEGETATION**
 - Woods-brushwood, Plantation, Tropical grass
- AERODROMES**
 - Field limits with runway pattern
 - EDNA - None
 - 50 - length of longest runway to nearest hundreds of feet
 - 725 - Elevation
 - Field limits, with runway pattern unknown
 - Field limits unknown, with runway pattern
 - Field limits and runway pattern unknown
- SEAPLANE BASE**
- SEAPLANE (EMERGENCY)**
- HELIPORT**
- RADIO FACILITIES**
 - RADIO RANGE #/MF
 - MULTIPLE RADIO FACILITIES
- CONTROLLED AIRSPACE**
 - ADIZ
 - ATLANTIC ADIZ
- VISUAL AIDS AND OBSTRUCTIONS**
 - Obstruction
 - 1108 - Elevation of obstruction top, above sea level
 - (229) - Elevation of obstruction top, above ground level
 - Group obstruction
 - Radio facility obstruction
 - Power transmission line
 - Ocean station vessel (Normal position)
 - Visual ground sign
 - Aero light, Marine light

CAUTION
 AIR INFORMATION CURRENT THROUGH 14 NOVEMBER 1978
 Consult Notices to Airmen (NOTAMs) and Flight Information Publications (FIPs) for the latest air information; the Chart Updating Manual (ICUM) for other chart revision information.

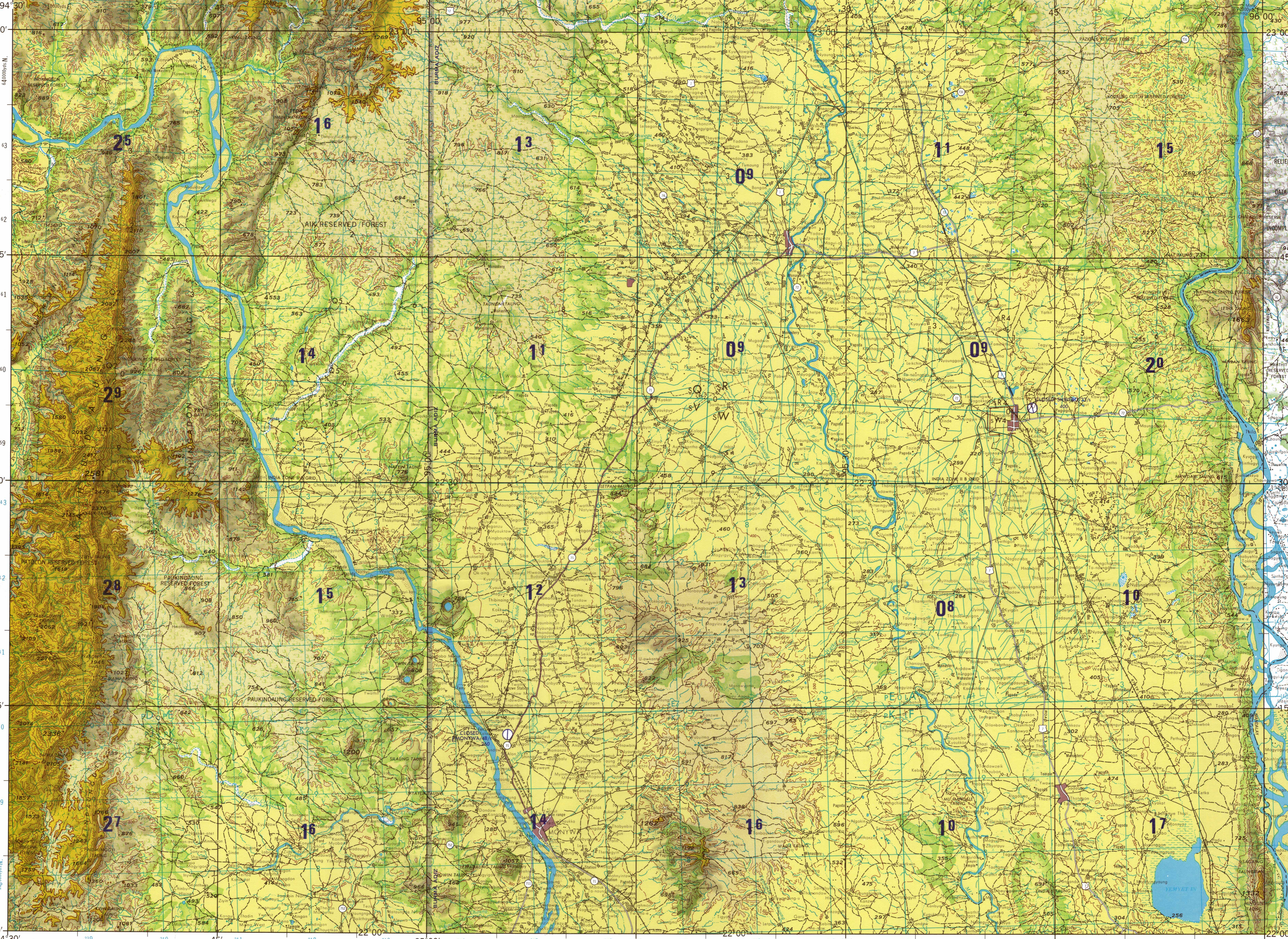
MAGNETIC VARIATION FOR 1975 IS APPROXIMATELY 2°45W OVER THE ENTIRE AREA
 (Annual rate of change, 1° decrease)

NOTES
 No obstructions 200 feet or more above ground level are known to exist within this area.
 THE REPRESENTATION OF INTERNATIONAL BOUNDARIES IS NOT NECESSARILY AUTHORITY.
 THE ALIGNMENT OF THE PRIMARY ADMINISTRATIVE BOUNDARIES IS APPROXIMATE.

ATTENTION
 THIS CHART CONTAINS MAXIMUM ELEVATION FIGURES (MEF)
 The Maximum Elevation Figures shown in quadrangles bounded by ticked lines of latitude and longitude are represented in THOUSANDS and HUNDREDS of feet above mean sea level. The MEF is based on information available concerning the highest known feature in each quadrangle, including terrain and obstructions (towers, towers, antennas, etc.). In areas of extensive unavaliable relief, the MEF is shown by a note spaced across the area.
 EXAMPLE: 12500 feet **125**



SCALE 1:250,000
 SHWEDO, BURMA
 SERIES 1501 AIR SHEET NF 46-8 EDITION 2
 COMPANION SERIES 1501 SHEET IS EDITION 1



ELEVATIONS IN FEET Scale 1:250,000 ELEVATIONS IN FEET

JOINT OPERATIONS GRAPHIC (AIR)

Scale 1:250,000
 20 Statute Miles
 10 Nautical Miles

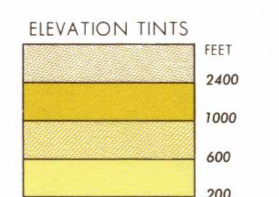
CONTOUR INTERVAL 200 FEET
 WITH SUPPLEMENTARY CONTOURS AT 100 FEET INTERVALS
 RELIEF PARTIALLY SHOWN BY FORM LINES
 VERTICAL DATUM: MEAN SEA LEVEL
 HORIZONTAL DATUM: INDIAN DATUM

TRANSVERSE MERCATOR PROJECTION
 BLUE NUMBERED LINES INDICATE THE 10,000 YARD INDIA ZONE III B GRID, EVEREST SPHEROID
 THE LAST FOUR DIGITS OF THE GRID NUMBERS ARE OMITTED
 BLACK NUMBERED LINES INDICATE THE 10,000 YARD INDIA ZONE II B GRID, EVEREST SPHEROID
 THE LAST FOUR DIGITS OF THE GRID NUMBERS ARE OMITTED

USERS SHOULD REFER TO CORRECTIONS, ADDITIONS, AND COMMENTS TO THE NIMA OPERATIONAL HELP DESK
 1 800 455 6899. COMMERCIAL: 314 263-6544. DON: 973-6544. OR WRITE TO: DIRECTOR, NATIONAL MAPS AND MAPPING AGENCY, ATTN: ENR MAIL STOP 1-88, 4600 SANGAMORE ROAD, BETHESDA, MD 20815-5003.

GLOSSARY

- Chaung stream, river
- Ch lake, swamp, pond
- Kan tank
- Kanna tank
- Sakan camping ground
- Taung mountain, mountain range

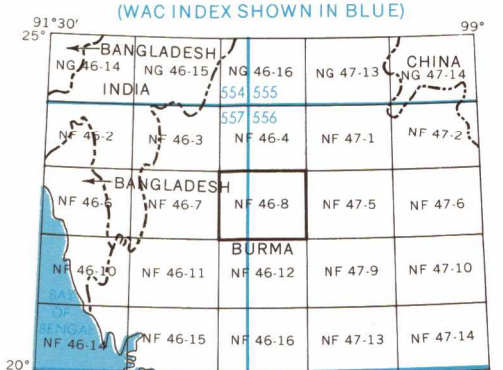


RELIABILITY OF THIS SHEET
 (as determined by standard practices)

MAP FEATURE	DATE OF INFORMATION
ALL FEATURES	1967

COMPILED FROM BEST AVAILABLE SOURCE MATERIALS

LOCATION DIAGRAM FOR NF 46-8
 (WAC INDEX SHOWN IN BLUE)



NSN 764101410123
 NIMA REF. NO. 1501ANF4608
 ED. NO. 002