

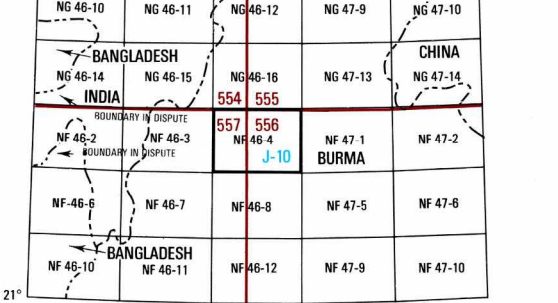
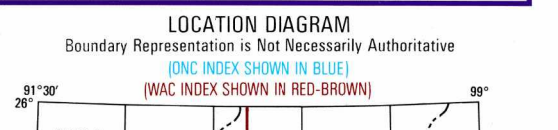
SERIES 1501 AIR SHEET NF 46-4 EDITION 3

Legend for map features including Populated Places, Roads, Railroads, Boundaries, Other Features, Terrain Elevations, Aerodromes, Radio Facilities, Controlled Airspace, Visual Aids and Obstructions, and CAUTION notes.

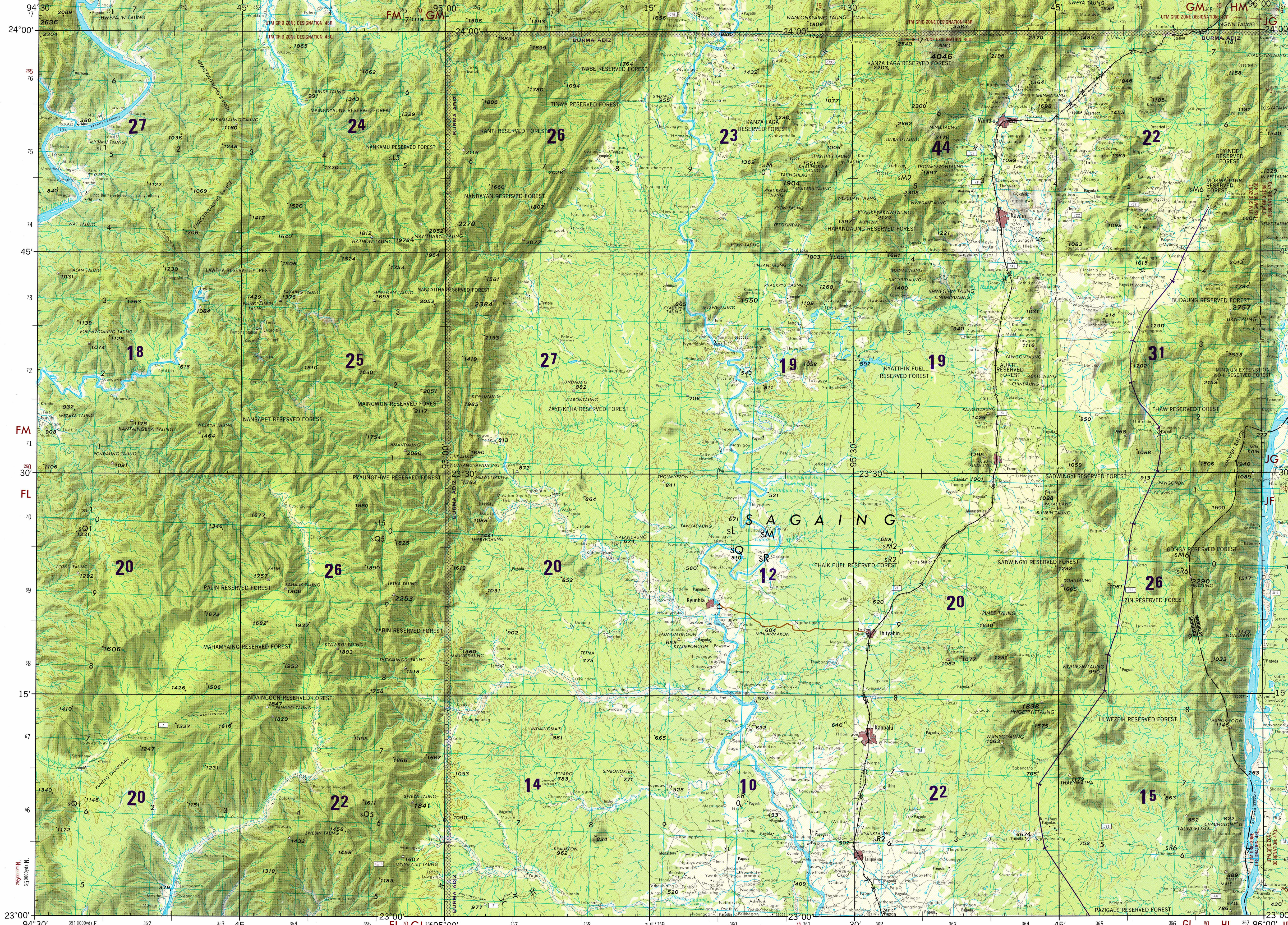
CAUTION AIR INFORMATION CURRENT THROUGH 26 JUNE 1992. Consult NOTAMS and Flight Information Publications for the latest air information...

MAGNETIC VARIATION FOR 1990 IS APPROXIMATELY 0° 45' WEST OVER THE ENTIRE AREA (Annual rate of change 1' decrease)

ATTENTION THIS CHART CONTAINS MAXIMUM ELEVATION FIGURES (MEF). The Maximum Elevation Figures shown in quadrangles bounded by ticked lines of latitude and longitude are represented in THOUSANDS and HUNDREDS of feet above mean sea level...



SERIES 1501 AIR SHEET NF 46-4 EDITION 3



Prepared and published by the Defense Mapping Agency Aerospace Center, St. Louis, Missouri. Compiled April 1967, Revised March 1992.

JOINT OPERATIONS GRAPHIC (AIR)

SCALE 1:250,000. Includes a graphic scale bar in both statute and nautical miles.

CONVERSION OF ELEVATIONS

Table for converting elevations between feet and meters.

TO USE THIS BOX FOR GIVING REFERENCES ON THE 1000 METER GRID

Diagram and text explaining how to use the 1000-meter grid for giving references.

CONTOUR INTERVAL 200 FEET WITH SUPPLEMENTARY CONTOURS AT 100 FOOT INTERVALS

Diagram and text explaining the contour interval and supplementary contours.

RELIABILITY OF THIS GRAPHIC

Table showing the reliability of the graphic based on plotting accuracy and area.

GLOSSARY

Table defining various symbols and abbreviations used on the map.

NOTES

Notes regarding obstructions, boundary representation, and other important information.

USERS SHOULD REFER CORRECTIONS, ADDITIONS, AND COMMENTS TO THE NIMA OPERATIONAL HELP DESK

Contact information for the NIMA Operational Help Desk and other relevant details.

