

SERIES 1501 AIR SHEET NF 48-01 EDITION 2

POPULATED PLACES
 Over 100,000: **BOMBAY**
 50,000 to 100,000: **QUETTA**
 10,000 to 50,000: **Mehāna**
 2,000 to 10,000: **Merāra**
 Less than 2,000: **LAH**

ROADS
 Dual highway: 4 LANES DUAL
 All weather, hard surface: 4 LANES
 More than two lanes wide: 4 LANES
 Two lanes wide: 3 LANES
 One lane wide: 3 LANES
 All weather, loose or light surface: 3 LANES
 More than two lanes wide: 3 LANES
 Two lanes wide: 3 LANES
 One lane wide: 3 LANES
 Fair or dry weather, loose surface: 3 LANES
 Cart track: 3 LANES
 Footpath, trail: 3 LANES
 Route marker: 3 LANES

RAILROADS
 Normal gauge, single track 1.44m (4'8 1/2"): **RR**
 Double track: **RR**
 Narrow gauge: **RR**

BOUNDARIES
 International: **INTL**
 First-order administrative: **ADM**
 Other features: **ADM**

OTHER FEATURES
 Area name: **ADM**
 Mine or quarry: **ADM**
 Campsite, Ruins, Watermill: **ADM**
 School, Church, Landmark: **ADM**
 Mosque, Muslim shrine: **ADM**
 Small reservoir or cistern: **ADM**
 Well, Perennial, Intermittent, Spring: **ADM**
 Underground aqueduct with shafts: **ADM**
 Sabkha or Dry lake, Intermittent lake: **ADM**
 Single line intermittent stream, Wadi: **ADM**
 Marsh or swamp; Land subject to inundation: **ADM**
 Mound, Levee: **ADM**
 Mudflat, Distorted surface: **ADM**
 Sand, flat or rolling, Sand dunes: **ADM**
 Horizontal control point: **ADM**

VEGETATION
 Woods, brushwood, Tropical grass: **ADM**
 Orchard, vineyard, Scrub: **ADM**
 None: **ADM**

HYDROGRAPHY
 Rocks, uncovered or awash: **ADM**
 Exposed wreck: **ADM**
 Limit of danger, Reef: **ADM**
 Foreshow flat: **ADM**
 Depth curve, Lighthouse: **ADM**

TERRAIN ELEVATIONS
 Spot elevation, normal, critical: **ADM**
 Highest known elevation is 568 feet at the following coordinates: **ADM**
 Geographic: 23°58'N, 91°31'E
 Grid: **ADM**
 ± following elevation value indicates accuracy is not within 100 feet

AERODROMES (Military or Civil)
 EDNA/50/1
 Runway pattern known: **ADM**
 725
 Field limits and runway pattern unknown: **ADM**

HELIPORT
ADM

RADIO FACILITIES
 VOR/VORTAC: **ADM**
 TACAN VOR/OME: **ADM**
 RADIO RANGE LF/MF: **ADM**
 MULTIPLE RADIO FACILITIES: **ADM**

CONTROLLED AIRSPACE
 ADIZ: **ADM**
ATLANTIC ADIZ

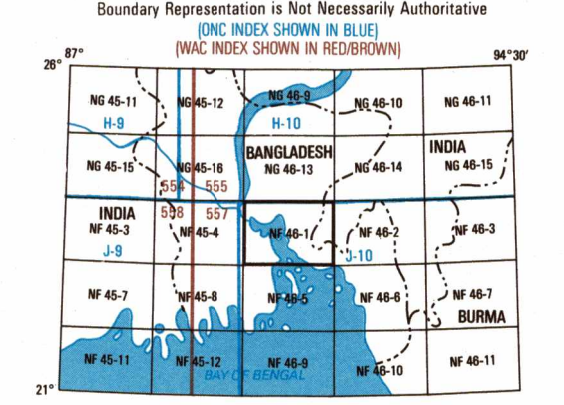
VISUAL AIDS AND OBSTRUCTIONS
 Obstruction: **ADM**
 1108-Elevation of obstruction top, above sea level
 (259)-Elevation of obstruction top, above ground level
 Group obstruction: **ADM**
 Radio facility obstruction: **ADM**
 Power transmission line: **ADM**
 Visual ground sign: **ADM**
 Aero light, Marine light: **ADM**

CAUTION
 Vertical obstructions, including aerodromes, have been extracted from the most reliable source available. However, there is no assurance that all are shown, or that their locations or heights are exact.

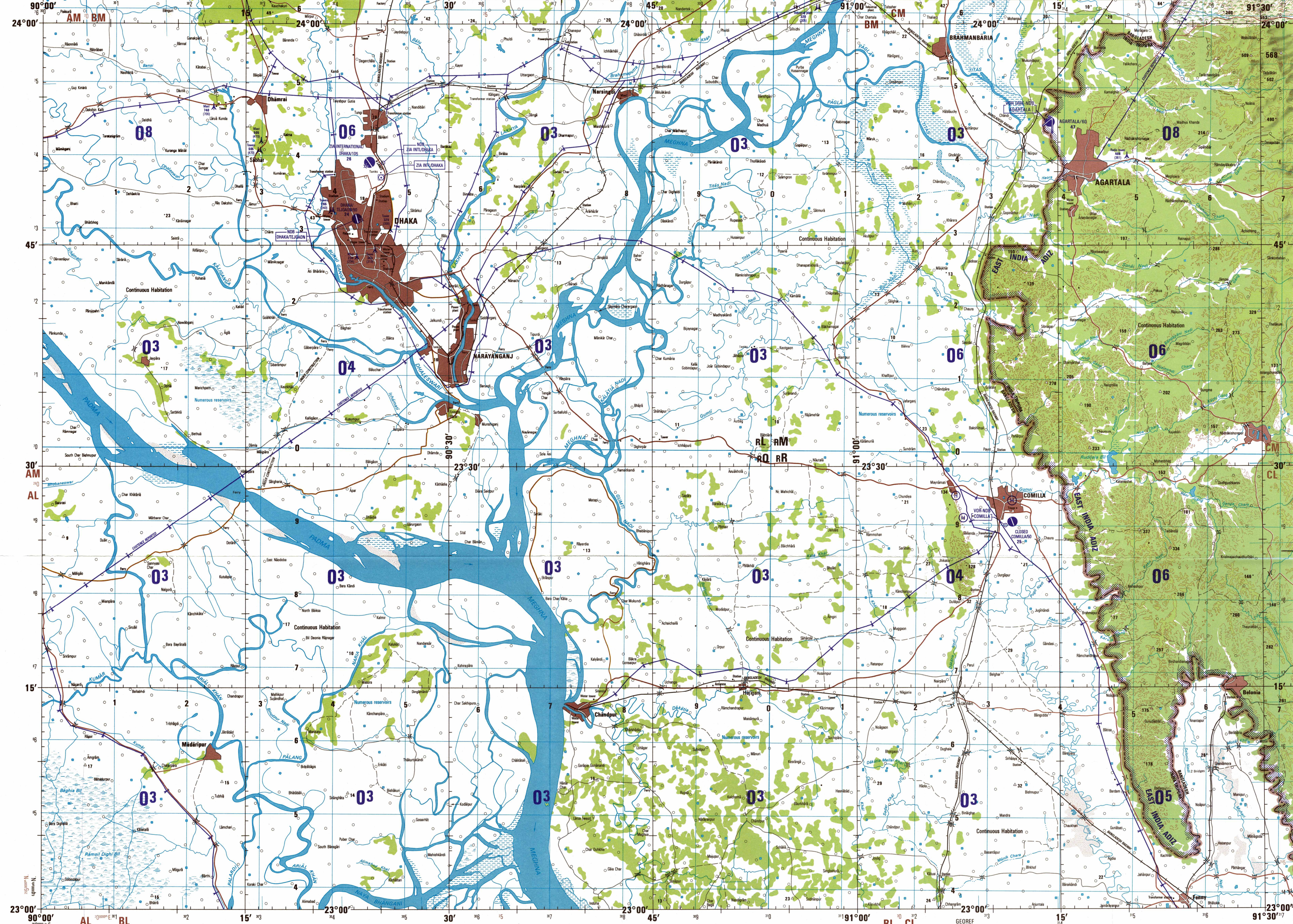
CAUTION
AIR INFORMATION CURRENT THROUGH 7 OCTOBER 1992
 Consult NOTAMS and Flight Information Publications for the latest air information; the DMA Aeronautical Chart Updating Manual or MOD (U.K.) Aeronautical Chart Amending document, for other chart revision information.

MAGNETIC VARIATION FOR 1990 IS APPROXIMATELY 0°45' WEST OVER THE ENTIRE AREA.
 (Annual rate of change, 1' decrease)

ATTENTION
THIS CHART CONTAINS MAXIMUM ELEVATION FIGURES (MEF)
 The Maximum Elevation Figures shown in quadrangles bounded by ticked lines of latitude and longitude are represented in THOUSANDS and HUNDREDS of feet above mean sea level. The MEF is based on information available concerning the highest known feature in each quadrangle, including terrain and obstructions (towers, towers, antennas, etc.).
125
 EXAMPLE: 12,500 feet



SCALE 1:250,000
DHAKA, BANGLADESH; INDIA
SERIES 1501 AIR SHEET NF 48-01 EDITION 2

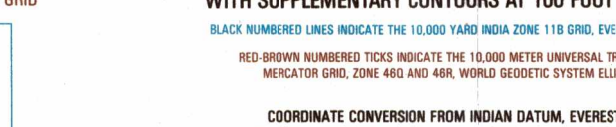
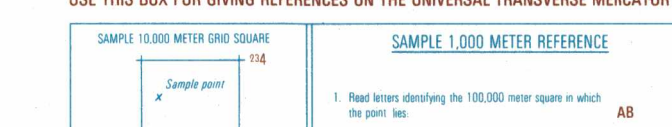
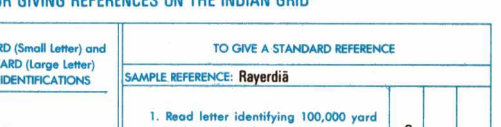


CONVERSION OF ELEVATIONS

FEET	METERS
1000	304
800	244
600	183
400	122
200	61
100	31

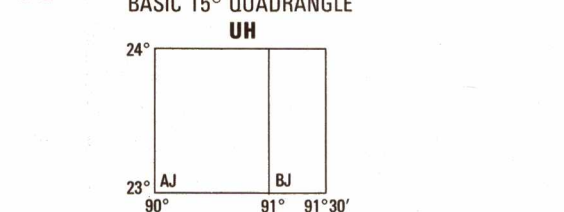
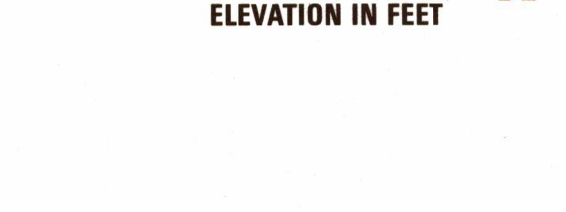
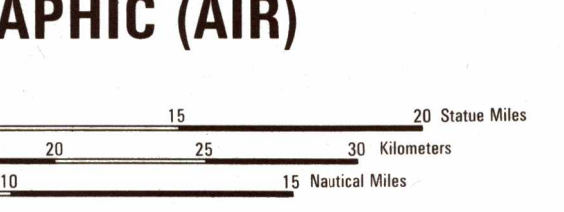
USE THIS BOX FOR GIVING REFERENCES ON THE INDIAN GRID

50000 YARD (Small Letters) and 100000 YARD (Large Letters) SQUARE IDENTIFICATION	TO GIVE A STANDARD REFERENCE				
<table border="1"> <tr><td>ML</td><td>NM</td></tr> <tr><td>NM</td><td>NR</td></tr> </table>	ML	NM	NM	NR	<ol style="list-style-type: none"> Read letter identifying 100,000 yard square in which the point lies. Locate the VERTICAL grid line to left of point and read LARGE figure labeling the line either in the top or bottom margin, or on the line itself. Locate the HORIZONTAL grid line below point and read LARGE figure labeling the line either in the left or right margin, or on the line itself.
ML	NM				
NM	NR				
<p>IGNORE the SMALLER figures of any grid number; these are for finding the full coordinates. Use ONLY the LARGE figure of the grid number; example: ML NR</p>	<p>SAMPLE REFERENCE: 07986</p>				



GLOSSARY

Symbol	Description
BL	Barometer
CH	Change
GL	Gravel
ST	Stream
SN	Sand
NO	Not shown



RELIABILITY OF THIS GRAPHIC
 (As determined by standard practice)

PLATTING ACCURACY 90% ASSURANCE

Horizontal Datum	Vertical Datum	Map-Made Features	Hydrography	Contours	All Other Features	DATE OF INFORMATION
Indian	Mean Sea Level	1987	1987	1987	1987	

NOTES
 Powerlines are shown except within populated place limits.
 Other obstructions are shown, if they are 200 feet or more above ground level. See caution note.
 On this graphic, a lane is generally considered as being 8 feet (2.5 meters) in width.
 BOUNDARY REPRESENTATION IS NOT NECESSARILY AUTHORITY.
 ALIGNMENT OF ALL BOUNDARIES IS APPROXIMATE.
 Road classification should be referred to with caution.

NSN 7641014005173
 NMA REF. NO. 1501ANF4601