

SERIES 1501 AIR SHEET NF 39-4 EDITION 5

- POPULATED PLACES**
- 1st importance: **DIMASHQ (DAMAS)**
 - 2nd importance: **AL HUDAIDAH**
 - 3rd importance: **Ajman**
 - 4th importance: **Dar al Amir**
 - 5th importance: **Kharrif**
- ROADS**
- Dual highway: 4 LINES 200ft
 - All weather, hard surface: 3 LINES
 - More than two lanes wide: 2 LINES
 - Two lanes wide: 1 LINE
 - One lane wide: 1 LINE
 - All weather, loose or light surface: 2 LINES
 - More than two lanes wide: 2 LINES
 - Two lanes wide: 1 LINE
 - One lane wide: 1 LINE
 - Fair or dry weather, loose surface: 1 LINE
 - Cart track: Trail (footpath): 1 LINE
- RAILROADS**
- Normal gauge 4' 8 1/2" (1.44m): Single track, Double track
 - Narrow gauge: Single track
- BOUNDARIES**
- International: 1 LINE
- TERRAIN ELEVATIONS**
- Spot elevation: normal, critical: 446 - 744
 - Following elevation value indicates accuracy is not within 100 feet: 1 LINE
 - Relative height: 1 LINE
- VEGETATION**
- Woods: 1 LINE
 - Orchard, plantations, vineyards: 1 LINE
 - Scattered trees: 1 LINE
- HYDROGRAPHY**
- Sakhs: Disappearing Stream: 1 LINE
 - Well: perennial, intermittent: 1 LINE
 - Wadi: Wadi spread: 1 LINE
 - Unimproved shoreline: Spring: 1 LINE
 - Rocks: Wreck: 1 LINE
 - Limit of danger: 1 LINE
 - Rail: 1 LINE
 - Foreshore flat: 1 LINE
- MISCELLANEOUS**
- Distorted surface: 1 LINE
 - Sand dunes: 1 LINE
 - Gravel: 1 LINE
 - Landmark area: Area name: 1 LINE
 - Landmark feature: Hut; Oil Well: 1 LINE
 - Mosque; Tank: 1 LINE
 - Horizontal control point: trig, astro: 1 LINE
 - Escarpment: 1 LINE
 - Depression: 1 LINE
 - Tribal name: 1 LINE

- AERODROMES (Military or Civil)**
- Runway pattern known: EDNA/50/75
 - EDNA-Name: 725
 - 50-Length of longest runway to nearest hundreds of feet: 725
 - Soft or unimproved surface: 725
 - Unknown surface: 725
 - Elevation: 725
 - Field limits and runway pattern unknown: 725
- HELIPORT**
- 1 LINE
- RADIO FACILITIES**
- VOR/VORTAC: 1 LINE
 - TACAN VOR/DME: 1 LINE
 - RADIO RANGE LF/MF: 1 LINE
 - MULTIPLE RADIO FACILITIES: 1 LINE
- CONTROLLED AIRSPACE**
- ADIZ: ATLANTIC ADIZ
- VISUAL AIDS AND OBSTRUCTIONS**
- Obstruction: 1 LINE
 - 700-Elevation of obstruction top, above sea level: 1 LINE
 - 250-Height of obstruction top, above ground level: 1 LINE
 - Group obstruction: 1 LINE
 - Radio facility obstruction: 1 LINE
 - Power transmission line: 1 LINE
 - Visual ground sign: 1 LINE
 - Aero light: Marine light: 1 LINE

CAUTION
AIR INFORMATION CURRENT AT 15 OCTOBER 1990
 Consult NOTAMS and Flight Information Publications for the latest air information; the DMA Aeronautical Chart Updating Manual or MOD (UK) Aeronautical Chart Amendment Document, for other chart revision information.

MAGNETIC VARIATION FOR 1987 IS APPROXIMATELY 1° 26' OVER THE ENTIRE AREA
 (Annual rate of change is 2' increase)

ATTENTION
THIS CHART CONTAINS MAXIMUM ELEVATION FIGURES (MEF)
 The Maximum Elevation Figures shown in quadrangles bounded by ticked lines of latitude and longitude are represented in THOUSANDS and HUNDREDS of feet above mean sea level. The MEF is based on information available concerning the highest known features in each quadrangle, including terrain and obstructions (trees, towers, antennas, etc.).
EXAMPLE: 12,500 feet

LOCATION DIAGRAM
 (UNC INDEX SHOWN IN BLUE)
 (MAG INDEX SHOWN IN RED/BROWN)

NG 38-10	NG 38-11	NG 38-12	NG 38-13	NG 38-14
NG 38-14	NG 38-15	NG 38-16	NG 38-17	NG 38-18
NG 38-2	NG 38-3	NG 38-4	NG 38-5	NG 38-6
NG 38-6	NG 38-7	NG 38-8	NG 38-9	NG 38-10
NG 38-10	NG 38-11	NG 38-12	NG 38-13	NG 38-14

Produced under the direction of the Director of Military Survey, Ministry of Defence, United Kingdom, 1994
 Copyright © HMSO London 1984

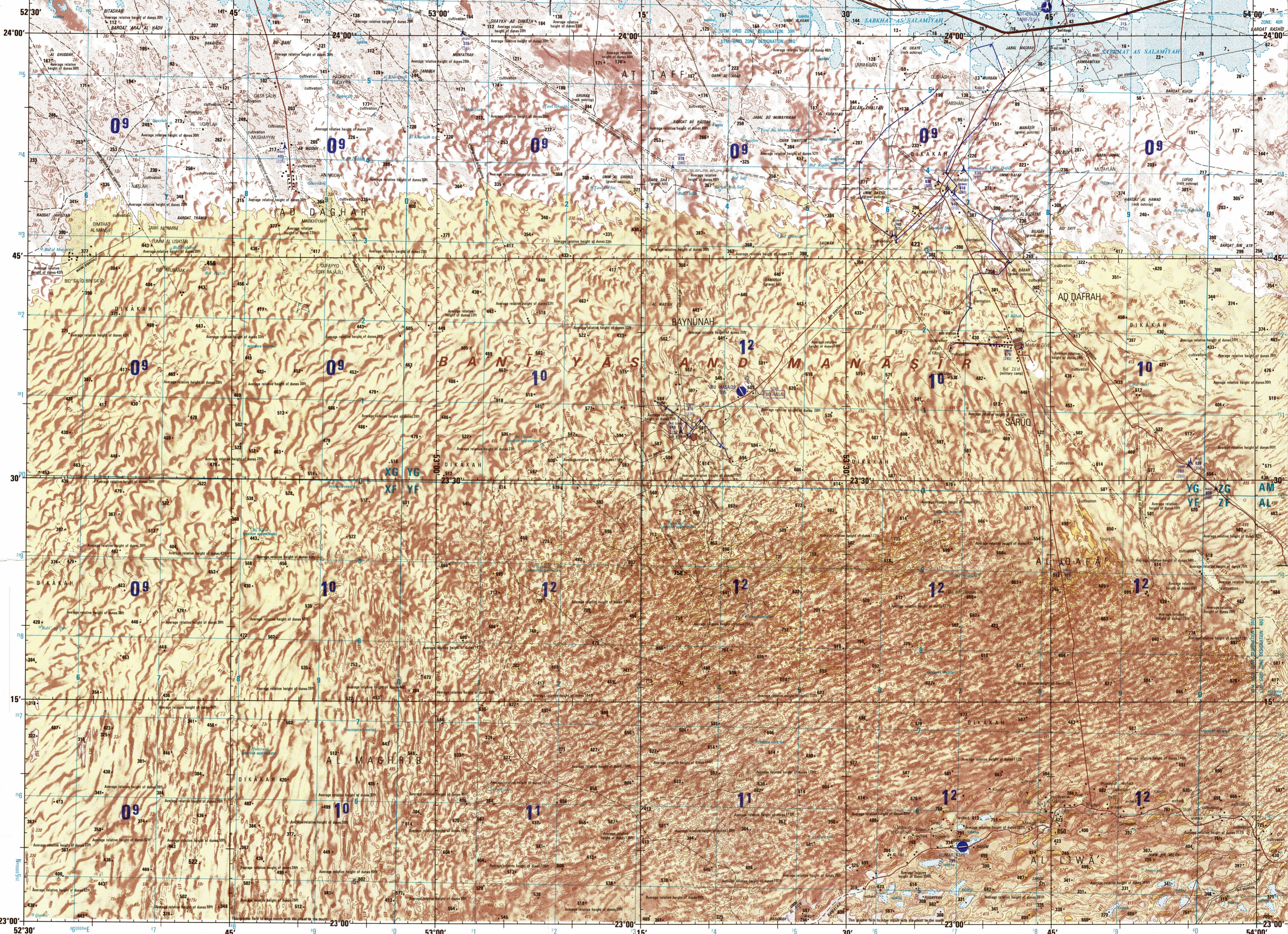
Revised October 1990. Revision limited to aeronautical information and correction of CHUM conditions.

CONVERSION OF ELEVATIONS

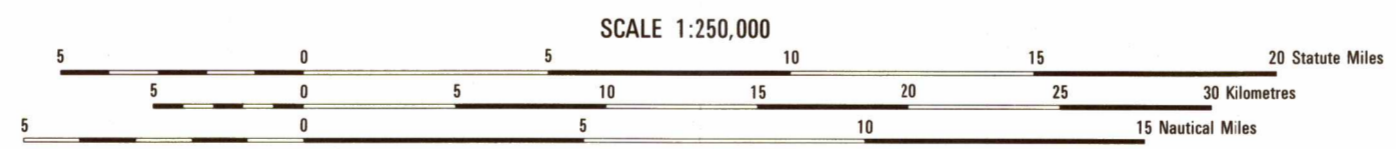
FEET	METRES	FEET	METRES
1000	305	1000	305
800	274	8000	2740
600	244	6000	2440
400	213	4000	2134
200	183	2000	1829
100	152	1000	1524
50	152	4000	1219
300	91	3000	914
200	61	2000	610
100	46	1000	457
100	30	1000	305

SCALE 1:250,000
BÜ HASÄ', UNITED ARAB EMIRATES

SERIES 1501 AIR SHEET NF 39-4 EDITION 5



JOINT OPERATIONS GRAPHIC (AIR)

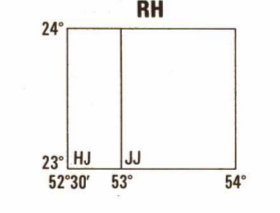


CONTOUR INTERVAL APPROXIMATELY 165 FEET WITH SUPPLEMENTARY CONTOURS AT 85 FOOT INTERVALS

BLUE NUMBERED LINES INDICATE THE 10,000 METRE UNIVERSAL TRANSVERSE MERCATOR GRID, ZONE 38, WGS 72 SPHEROID

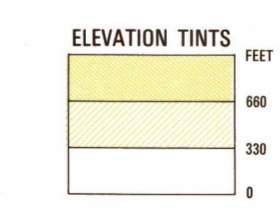
FOR REFERENCING, GRID AND GEOGRAPHIC VALUES MAY BE CONSIDERED AS EITHER EUROPEAN OR WORLD GEODETIC SYSTEM DATA SINCE POSITION PLOTTING DIFFERENCES ARE NOT SIGNIFICANT AT THIS SCALE

USERS SHOULD REFER DIRECTIONS, ADDITIONS, AND COMMENTS TO THE NIMA CUSTOMER HELP DESK: 1-800-455-0899; COMMERCIAL: 1-314-260-1226; (UK USERS) DIRECTORATE OF MILITARY SURVEY, MINISTRY OF DEFENCE, EARWOOD AVENUE, FELTHAM, MIDDLESEX, ENGLAND TW13 7AE



GLOSSARY

- Bani: tribe
- Bargat: hill
- Bar: well
- Jabal: mountain
- Masbat: village
- Qarn: rocky hill, peak
- Sakhs: salt marsh
- Tawi: well, waterhole



NOTES

Only obstructions 200 feet or more above ground level are shown. The information on obstructions is not necessarily complete. The information on powerlines is not necessarily complete. On this graphic a lane is generally considered as being 25 metres (8 feet) in width.

GRAPHICS PRODUCED UNDER THE DIRECTION OF THE DIRECTOR OF MILITARY SURVEY ARE NOT TO BE TAKEN AS NECESSARILY REPRESENTING THE VIEW OF THE UK GOVERNMENT ON BOUNDARIES OR POLITICAL STATUS.

DIKAKAH: Sand humps or hummocks formed by the accumulation of wind-blown sand around various types of grasses and bushes. The wind-built hummocks vary in size and concentration and are usually elongated in shape. A dense occurrence of these humps may form a serious barrier to motor travel.

RELATIVE HEIGHT: 40, 20, etc., etc., represents the approximate height in feet of an escarpment, incised stream bank, sand dune, or similar features.

NSN 7641014105991
 ED. NO. 005
 NIMA STOCK NO. 1501ANF3904