

**SERIES 1501 AIR SHEET EDITION 1**  
NF 34-5

**POPULATED PLACES**

Over 100,000	ALGER
50,000 to 100,000	SAFI
10,000 to 50,000	Settat
2,000 to 10,000	Tiflet
Less than 2,000	Marchand

**ROADS**

4 LANES DUAL  
Dual highway  
All weather, hard surface  
More than two lanes wide  
Two lanes wide  
One lane wide  
All weather, loose or light surface  
More than two lanes wide  
Two lanes wide  
One lane wide  
Fair or dry weather, loose surface  
Cart track  
Footpath, trail  
Route marker

**RAILROADS**

Normal gauge, single track 1.44m (4'8 1/2") Double track  
Narrow gauge

**BOUNDARIES**

International  
First-order administrative

**OTHER FEATURES**

Area name  
Mine or quarry  
Campsite, Ruins, Watermill  
School, Church, Landmark  
Mosque, Muslim shrine  
Small reservoir or cistern  
Well, Perennial, Intermittent, Spring  
Underground aqueduct with shafts  
Sahkra or Dry lake, Intermittent lake  
Single line intermittent stream, Wadi  
Marsh or swamp, Land subject to inundation  
Mound, Levee  
Mudflat, Distorted surface  
Sand, flat or rolling; Lateral dunes  
Horizontal control point

**VEGETATION**

Wood, brushwood, Scattered trees  
Orchard, vineyard, Scrub  
NONE NONE  
NONE NONE

**HYDROGRAPHY**

Rocks, uncovering or awash  
Exposed wreck  
Limit of danger, Reef  
Foreshore flat  
Depth curve, Lighthouse

**TERRAIN ELEVATIONS**

Spot elevation, normal, critical  
HIGHEST KNOWN ELEVATION IS **7520** feet at the following coordinates  
Geographic: 22°55'N, 19°12'E  
Grid: CX1843

**AERODROMES (Military or Civil)**

EDNA/50/5  
Runway patterns known  
725  
Field limits and runway pattern unknown

**HELIPORT**

**RADIO FACILITIES**

VOR VORTAC  
TACAN VOR/DME  
RADIO RANGE LF/MF  
MULTIPLE RADIO FACILITIES

**CONTROLLED AIRSPACE**

ADIZ ATLANTIC ADIZ

**VISUAL AIDS AND OBSTRUCTIONS**

1108  
Obstruction  
1108-Elevation of obstruction top, above sea level  
(259)-Elevation of obstruction top, above ground level  
Group obstruction  
Radio facility obstruction  
Power transmission line

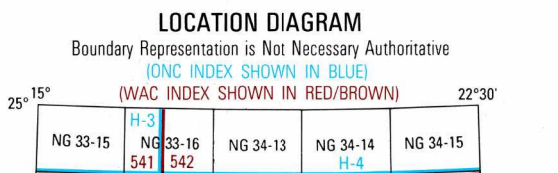
**CAUTION**

critical obstructions, including obstructions, have been extracted from the most reliable sources available; however, there is no assurance that all obstructions, or their true locations or heights are exact.

**CAUTION**  
**AIR INFORMATION CURRENT THROUGH 18 FEBRUARY 1994**  
Consult NOTAMS and Flight Information Publications for the latest air information; the DMA Aeronautical Chart Updating Manual or MOD (U.K.) Aeronautical Chart Amendment document, for other chart revision information.

**MAGNETIC VARIATION FOR 1990 IS APPROXIMATELY 1/2°E OVER THE ENTIRE AREA**  
(Annual rate of change, 4' increase)

**ATTENTION**  
**THIS CHART CONTAINS MAXIMUM ELEVATION FIGURES (MEF)**  
The Maximum Elevation Figures shown in quadrangles bounded by ticked lines of latitude and longitude are represented in THOUSANDS and HUNDREDS of feet above mean sea level. The MEF is based on information available concerning the highest known features in each quadrangle, including terrain and obstructions (towers, towers, antennae, etc.).  
**EXAMPLE: 12,500 feet**



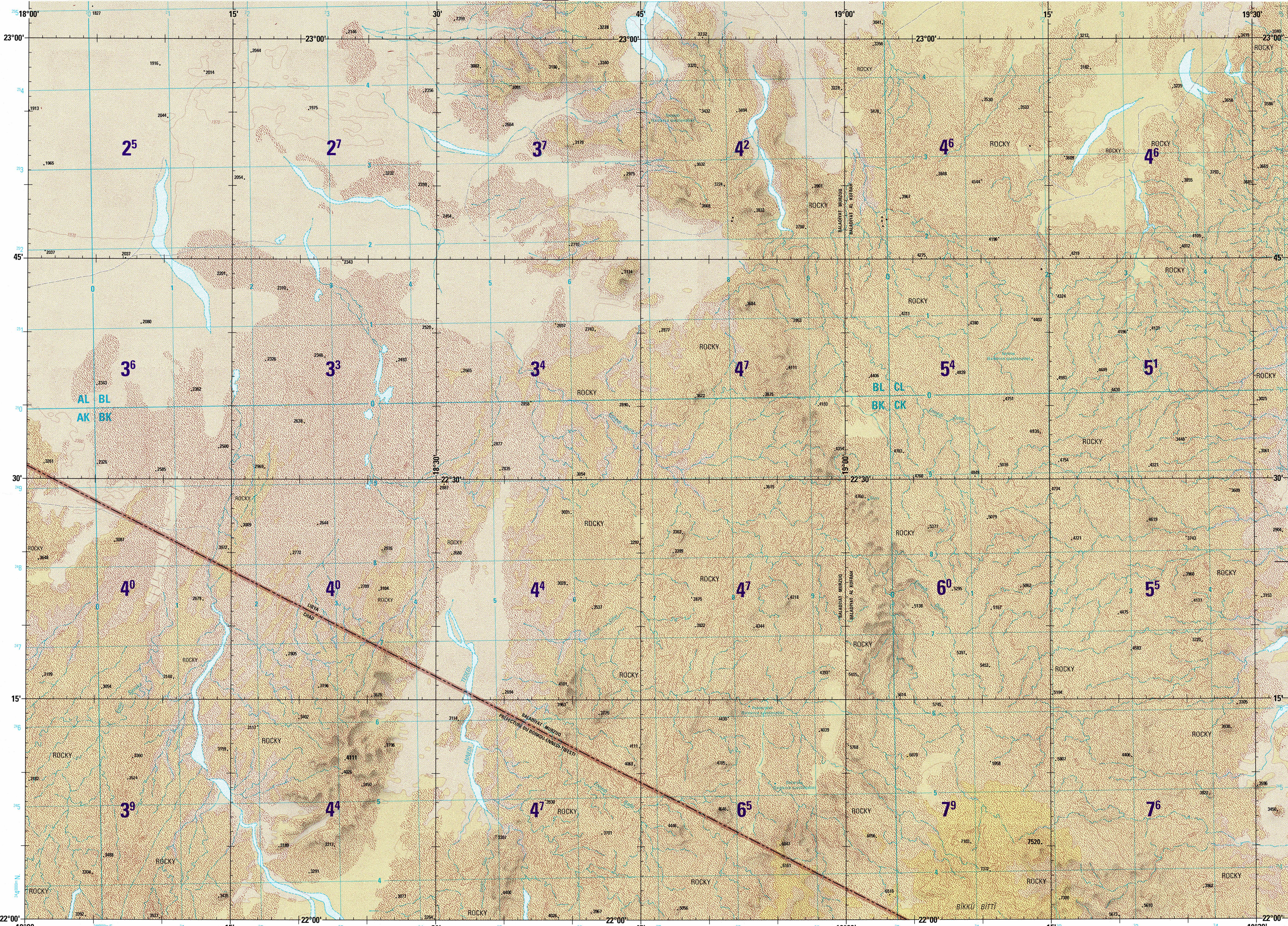
Prepared and published by the Defense Mapping Agency  
Aerospace Center, St. Louis, Missouri  
Compiled January, 1994  
MAP INFORMATION AS OF 1992  
©COPYRIGHT 1994 BY THE UNITED STATES GOVERNMENT  
NO COPYRIGHT CLAIM UNDER TITLE 17 U.S.C.

**CONVERSION OF ELEVATIONS**

FEET	METERS	FEET	METERS
1000	305	10000	3048
900	274	9000	2743
800	244	8000	2438
700	213	7000	2134
600	183	6000	1829
500	152	5000	1524
400	122	4000	1219
300	91	3000	914
200	61	2000	610
150	46	1500	457
100	31	1000	305

**SCALE 1:250,000**  
**OUIRU, LIBYA; CHAD**

**SERIES 1501 AIR SHEET NF 34-5 EDITION 1**

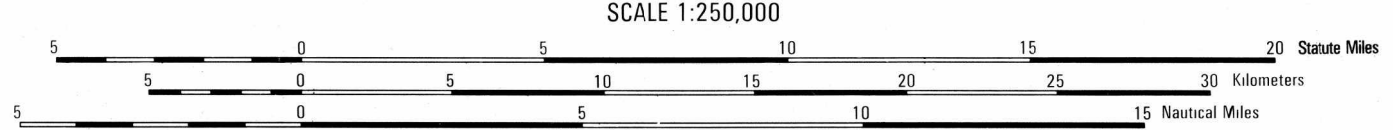


**JOINT OPERATIONS GRAPHIC (AIR)**

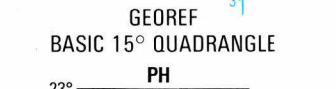
Scale 1:250,000  
ELEVATIONS IN FEET

**ELEVATIONS IN FEET**

CONTOUR INTERVAL APPROXIMATELY 330 FEET



**ELEVATIONS IN FEET**



**RELIABILITY OF THIS GRAPHIC**  
(As determined by standard practices)

PLOTTING ACCURACY 90% ASSUMANCE

Horizontal	± 0.25 ft.
Contours	± 1.65 ft.
Date of information	1992

Graphic not field check

Horizontal Datum: World Geodetic System 84  
Vertical Datum: Mean Sea Level  
Transverse Mercator Projection

**NOTES**

No obstructions 200 feet or more above ground level are known to exist in this area.  
On this graphic a lane is generally considered as being 8 feet (2.5 meters) in width.  
BOUNDARY REPRESENTATION IS NOT NECESSARILY AUTHORITY ALIGNMENT OF ALL BOUNDARIES IS APPROXIMATE.  
Road classification should be referred to with caution.

**GLOSSARY**

- Baladiyah ..... first-order administrative division  
Ennedi ..... wadi  
Emiri ..... wadi  
Enniri ..... wadi  
Prefecture ..... first-order administrative division

USERS SHOULD REFER CORRECTIONS, ADDITIONS, AND COMMENTS TO THE NIMA OPERATIONAL HELP DESK:  
1-800-485-0888; COMMERCIAL 301-223-4864; SERVICES 4864; OR WRITE TO DIRECTOR, NATIONAL IMAGERY AND MAPPING AGENCY, ATTN: ES, MAIL STOP 1-88, 4600 SANGAMER ROAD, BETHESDA, MD 20816-9003.