

SERIES 1501 AIR SHEET NF 33-8 EDITION 1

POPULATED PLACES

Over 100,000	CAIRO
50,000 to 100,000	NYALA
10,000 to 50,000	Sarh
2,000 to 10,000	Shandi
Less than 2,000	Marawi

ROADS

Dual highway	4 LANES DUAL
All weather, hard surface	4 LANES
More than two lanes wide	4 LANES
Two lanes wide	4 LANES
One lane wide	4 LANES
All weather, loose or light surface	4 LANES
More than two lanes wide	4 LANES
Two lanes wide	4 LANES
One lane wide	4 LANES
Fair or dry weather, loose surface	4 LANES
Two lanes wide	4 LANES
One lane wide	4 LANES
Cart track	4 LANES
Footpath, trail	4 LANES
Route marker	4 LANES

RAILROADS

Normal gauge, single track 1.44m(4 1/2"); Double track	RAILROADS
Narrow gauge	RAILROADS

BOUNDARIES

International	BOUNDARIES
First-order administrative division	BOUNDARIES

OTHER FEATURES

Area name	OTHER FEATURES
Mine or quarry	OTHER FEATURES
School, landmark feature	OTHER FEATURES
Mosque, Church	OTHER FEATURES
Fence	OTHER FEATURES
Well: Perennial, Intermittent, Spring	OTHER FEATURES
Single line perennial stream	OTHER FEATURES
Single line intermittent stream	OTHER FEATURES
Double line perennial stream, Wadi	OTHER FEATURES
Sabkha or dry lake; Intermittent lake	OTHER FEATURES
Marsh or swamp; Land subject to inundation	OTHER FEATURES
Cliff: Greater than interval, Less than interval	OTHER FEATURES
Perennial, Level	OTHER FEATURES
Horizontal control point	OTHER FEATURES
Sand, Gravel	OTHER FEATURES
Distorted surface; Rippled dunes	OTHER FEATURES
Transverse dunes; Lateral dunes	OTHER FEATURES

VEGETATION

Woods, brushwood; Scattered trees	VEGETATION
Plantation, orchard; Tropical grass	VEGETATION

TERRAIN ELEVATIONS
 Spot elevation: Normal, Critical
 HIGHEST KNOWN elevation is 4684 feet at the following coordinates:
 Geographic: 22°17'N, 17°54'E
 Grid: YE9968
 ± following elevation value indicates accuracy is not within 100 feet

AERODROMES (Military or Civil)

Runway pattern known	AERODROMES
Name, length, surface	AERODROMES
Elevation	AERODROMES
Runway pattern unknown	AERODROMES

HELIPORT / HELIPAD; AT HOSPITAL

HELIPORT / HELIPAD; AT HOSPITAL

RADIO FACILITIES

VOR, VORTAC	RADIO FACILITIES
TACAN, VOR / DME	RADIO FACILITIES
RADIO RANGE LF / MF	RADIO FACILITIES
MULTIPLE RADIO FACILITIES	RADIO FACILITIES

CONTROLLED AIRSPACE

CONTROLLED AIRSPACE

VISUAL AIDS AND OBSTRUCTIONS

Obstruction	VISUAL AIDS AND OBSTRUCTIONS
1100 - Elevation of obstruction top, above sea level	VISUAL AIDS AND OBSTRUCTIONS
(260) - Elevation of obstruction top, above ground level	VISUAL AIDS AND OBSTRUCTIONS
Group obstruction	VISUAL AIDS AND OBSTRUCTIONS
Radio facility obstruction	VISUAL AIDS AND OBSTRUCTIONS
Power transmission line	VISUAL AIDS AND OBSTRUCTIONS
Visual ground sign	VISUAL AIDS AND OBSTRUCTIONS
Aero light; Marine light	VISUAL AIDS AND OBSTRUCTIONS

CAUTION
 Vertical obstructions, including powerlines, have been extracted from the most reliable sources available. However, there is no assurance that all are shown, or that their locations or heights are exact.

CAUTION - AIR INFORMATION CURRENT THROUGH 28 APRIL 1993
 Consult NOTAMS and Flight Information Publications for the latest air information; the DMA Aeronautical Chart Updating Manual or MOD (U. K.) Aeronautical Chart Amendment document, for other chart revision information.

MAGNETIC VARIATION FOR 1990 IS APPROXIMATELY 15° E OVER THE ENTIRE AREA (Annual rate of change 4' increase)

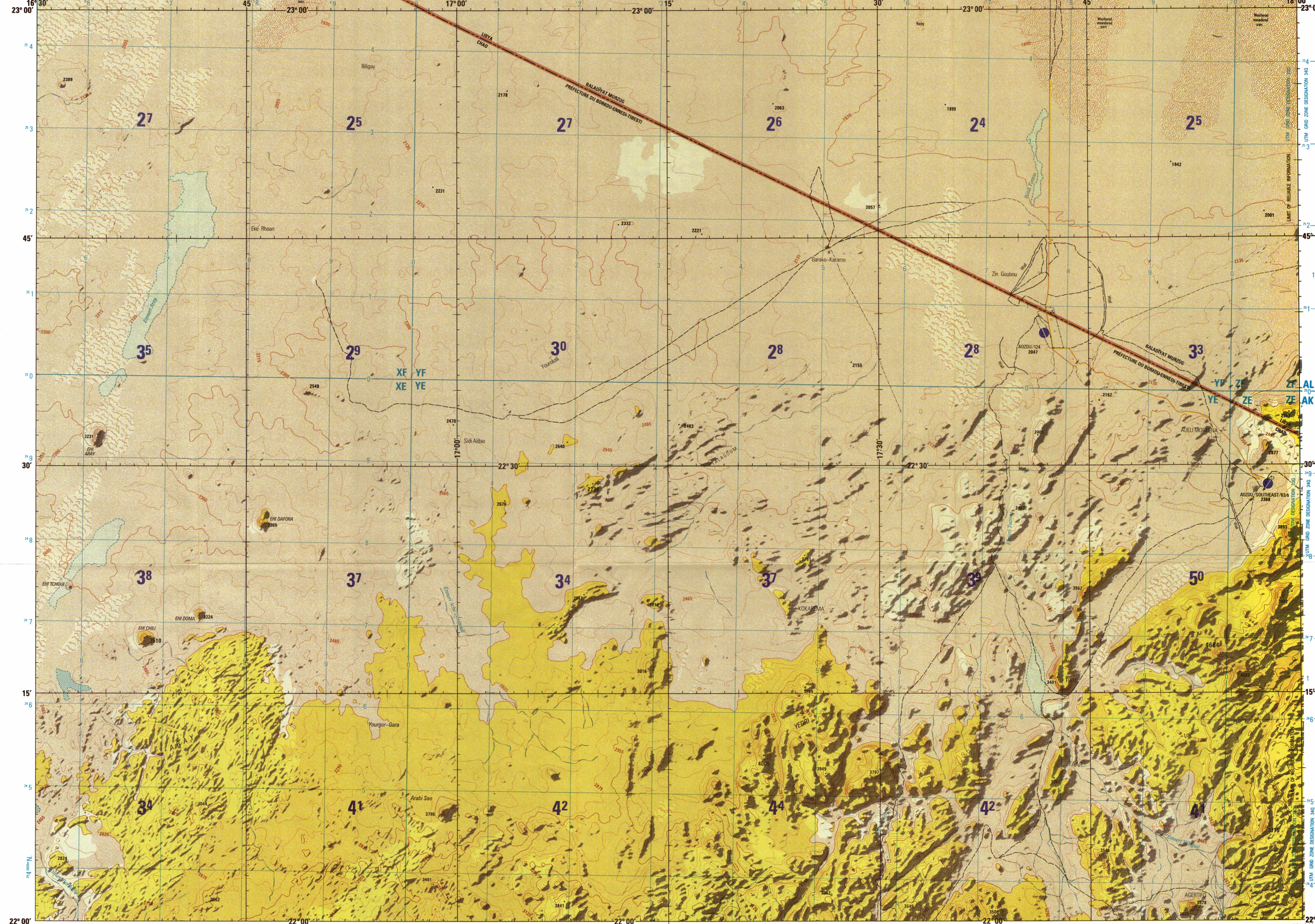
ATTENTION
 THIS CHART CONTAINS MAXIMUM ELEVATION FIGURES (MEF)
 The Maximum Elevation Figures shown in quadrangles bounded by ticked lines of latitude and longitude are represented in THOUSANDS and HUNDREDS of feet above mean sea level. The MEF is based on information available concerning the highest known features in each quadrangle, including terrain and obstructions (trees, towers, antennas, etc.).
 EXAMPLE: 12,500 feet

LOCATION DIAGRAM
 (VIC INDEX SHOWN IN BLUE)
 (WAC INDEX SHOWN IN RED/BROWN)

NG 33-14	NG 33-15	NG 33-16	NG 33-17	NG 33-18	NG 33-19
NG 33-2	NG 33-3	NG 33-4	NG 33-5	NG 33-6	NG 33-7
NG 33-8	NG 33-9	NG 33-10	NG 33-11	NG 33-12	NG 33-13
NG 33-14	NG 33-15	NG 33-16	NG 33-17	NG 33-18	NG 33-19

THE REPRESENTATION OF INTERNATIONAL BOUNDARIES IS NOT NECESSARILY AUTHORITATIVE.

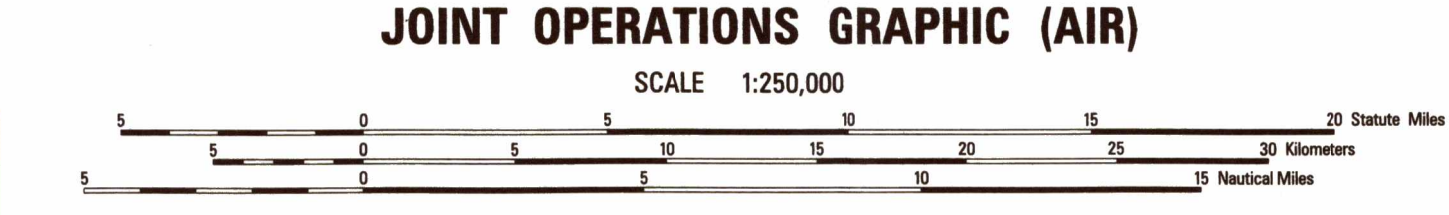
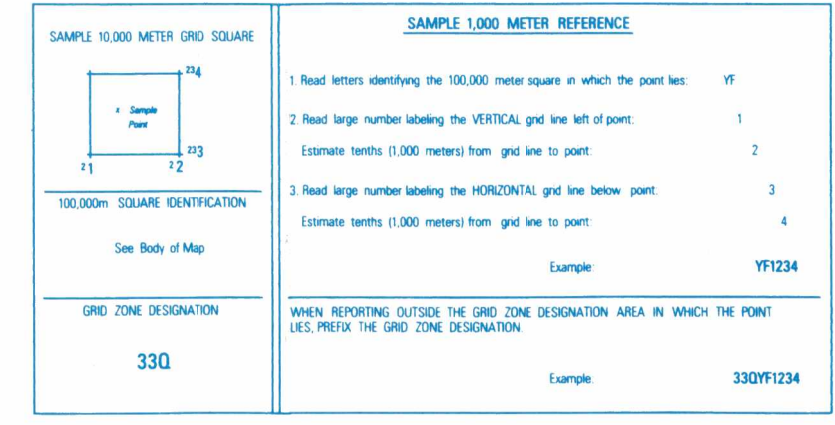
SCALE 1:250,000
EHI ARAY, CHAD; LIBYA
 SERIES 1501 AIR SHEET NF 33-8 EDITION 1



Prepared and published by the Defense Mapping Agency Aerospace Center, St. Louis, Missouri.
 Compiled April, 1992
 MAP INFORMATION AS OF 1988

CONVERSION OF ELEVATIONS

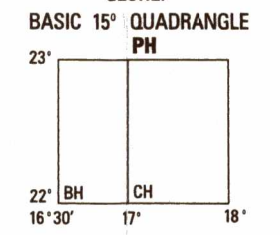
FEET	METERS	FEET	METERS
600	183	1000	305
800	244	1200	366
1000	305	1400	427
1200	366	1600	488
1400	427	1800	549
1600	488	2000	610
1800	549	2200	671
2000	610	2400	732
2200	671	2600	793
2400	732	2800	854
2600	793	3000	915
2800	854	3200	976
3000	915	3400	1037
3200	976	3600	1098
3400	1037	3800	1159
3600	1098	4000	1220
3800	1159	4200	1281
4000	1220	4400	1342
4200	1281	4600	1403
4400	1342	4800	1464
4600	1403	5000	1525
4800	1464	5200	1586
5000	1525	5400	1647
5200	1586	5600	1708
5400	1647	5800	1769
5600	1708	6000	1830
5800	1769	6200	1891
6000	1830	6400	1952
6200	1891	6600	2013
6400	1952	6800	2074
6600	2013	7000	2135
6800	2074	7200	2196
7000	2135	7400	2257
7200	2196	7600	2318
7400	2257	7800	2379
7600	2318	8000	2440
7800	2379	8200	2501
8000	2440	8400	2562
8200	2501	8600	2623
8400	2562	8800	2684
8600	2623	9000	2745
8800	2684	9200	2806
9000	2745	9400	2867
9200	2806	9600	2928
9400	2867	9800	2989
9600	2928	10000	3050



ELEVATIONS IN FEET

GLOSSARY

Baladyat	first-order administrative division
Ehi	hill
Eren	marsh
Prefecture	first-order administrative division
Wadi	wadi



ELEVATION TINTS

FEET	TINT
2825	[Yellow tint]
660	[Light yellow tint]

RELIABILITY OF THIS GRAPHIC
 (as determined by standard practice)

Plotting Accuracy 90% Assurance	Area I	Area II
Horizontal Contours	425 ft. 425 ft. 170 ft.	425 ft. 425 ft. 170 ft.
Graphic Feature Area I Area II		
Date of Information		
Contours	1992 1992	1989 1989
All other features	1989 1989	1989 1989

NOTES
 Powerlines are shown except within populated place limits. Other obstructions are shown if they are 200 feet or more above ground level. See caution note.
 On this graphic a line is generally considered as being 8 feet (2.5 meters) in width.
 Road classification should be referred to with caution.
 THE REPRESENTATION OF BOUNDARIES IS NOT NECESSARILY AUTHORITATIVE.

Reprinted by NIMA 10-2001

Horizontal Datum: World Geodetic System 84
 Vertical Datum: Mean Sea Level
 Transverse Mercator Projection

NSN 7641014099115
 NIMA REF. NO. 1501ANF3308