

SERIES 1501 AIR SHEET NE 47-9 EDITION 2

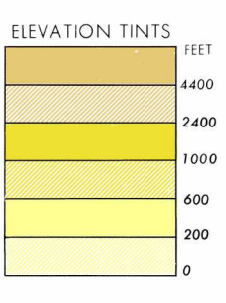
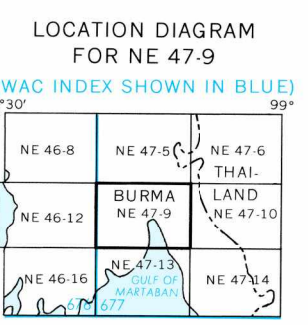
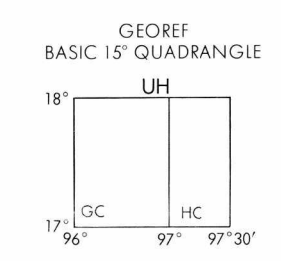


Table with 2 columns: MAP FEATURE, DATE OF INFORMATION. Lists features like 'ALL FEATURES' and 'COMPILED FROM BEST AVAILABLE SOURCE MATERIALS'.

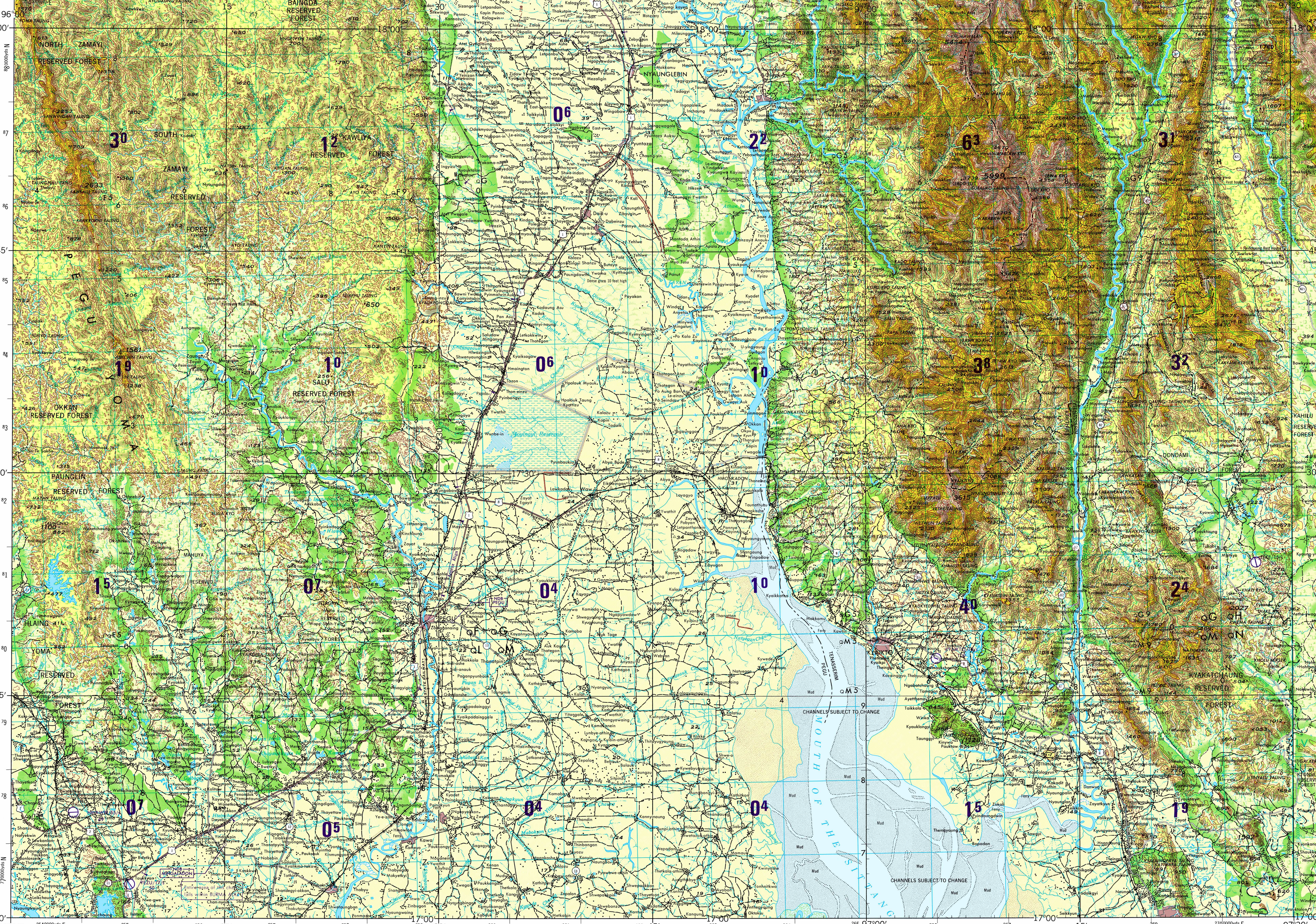


Glossary table listing symbols for various terrain features like 'Chaug', 'Gyang', 'Hlaing', etc., and their corresponding symbols.

ATTENTION box containing text about maximum elevation figures (MEF) and an example: 'EXAMPLE: 12500 feet' with a large '125' symbol.

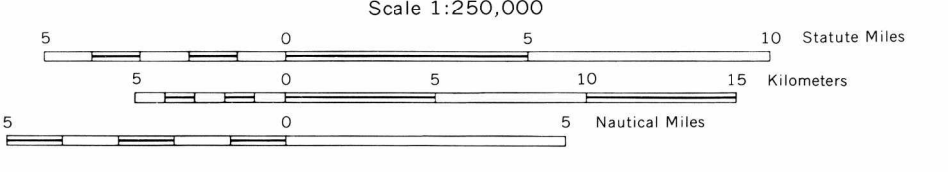
CAUTION: AIR INFORMATION CURRENT THROUGH 25 MAY 1978. Consult Notices to Airmen (NOTAMS) and Flight Information Publications (FIP) for the latest air information.

MAGNETIC VARIATION FOR 1975 IS APPROXIMATELY 0° 30' W OVER THE ENTIRE AREA. (Annual rate of change, 1' decrease)



Prepared under the direction of the Defense Intelligence Agency and published by the Aeronautical Chart and Information Center, U.S. Air Force, St. Louis, Missouri, 63118. Compiled from maps and intelligence information available as of August 1967.

# JOINT OPERATIONS GRAPHIC (AIR)



CONTOUR INTERVAL 200 FEET WITH SUPPLEMENTARY CONTOURS AT 100 FEET. VERTICAL DATUM: MEAN SEA LEVEL. HORIZONTAL DATUM: INDIAN DATUM.

TRANSVERSE MERCATOR PROJECTION. THE LAST FOUR DIGITS OF THE GRID NUMBERS ARE OMITTED.

BLUE NUMBERED LINES INDICATE THE 10,000 METER UNIVERSAL TRANSVERSE MERCATOR GRID, ZONE 47Q, EVEREST SPHEROID. BLACK NUMBERED LINES INDICATE THE 10,000 YARD INDIA ZONE IUB GRID, EVEREST SPHEROID. NOTE: Refer corrections to this graphic to COMMANDER, AERONAUTICAL CHART AND INFORMATION CENTER, SECOND AND ARSENAL STREETS, ST. LOUIS, MISSOURI 63118, ATTN: ACDB.

Legend for roads, railroads, boundaries, and vegetation. Includes a table for road types and a table for railroads.

Legend for aerodromes, radio facilities, and terrain elevations. Includes symbols for EDNA, radio range, and radio facilities.

Legend for controlled airspace, visual aids and obstructions, and terrain elevations. Includes symbols for ADIZ, obstructions, and terrain elevations.

NOTES: No obstructions 200 feet or more above ground level are known to exist within this area. CAUTION: Power transmission line information on this sheet is incomplete. A line is generally considered as being 8 to 15 feet (2.44 to 4.58 meters) high. The REPRESENTATION OF INTERNATIONAL BOUNDARIES ON THIS CHART IS NOT NECESSARILY AUTHENTICATIVE. THE ALIGNMENT OF PRIMARY ADMINISTRATIVE BOUNDARIES IS APPROXIMATE.

DISTRIBUTION LIMITED-DESTROY WHEN NO LONGER NEEDED. SCALE 1:250,000 PEGU, BURMA. SERIES 1501 AIR SHEET NE 47-9 EDITION 2.

SERIES 1501 AIR SHEET NE 47-9 EDITION 2. COMPANION SERIES 1501 SHEET IS EDITION 1.

STOCK NO. 1501ANE4709