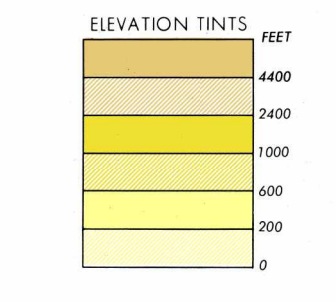
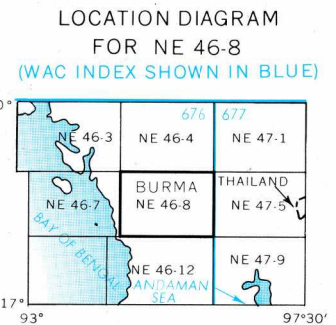


SERIES 1501 AIR SHEET NE 46-8 EDITION 2



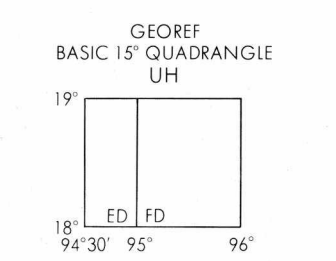
RELIABILITY OF THIS SHEET (as determined by standard practices)

MAP FEATURE	DATE OF INFORMATION
ALL FEATURES	1967
COMPILED FROM BEST AVAILABLE SOURCE MATERIALS	



GLOSSARY

Chung stream
Dang mountain
In lake
Kyan mountain, mountain range
Kyau mountain
Kyun island
Myang stream
Sakan camping ground
San spring, stream
Taung mountain
Taunggyi mountain
Te hut
Yo stream
Yoma mountain range



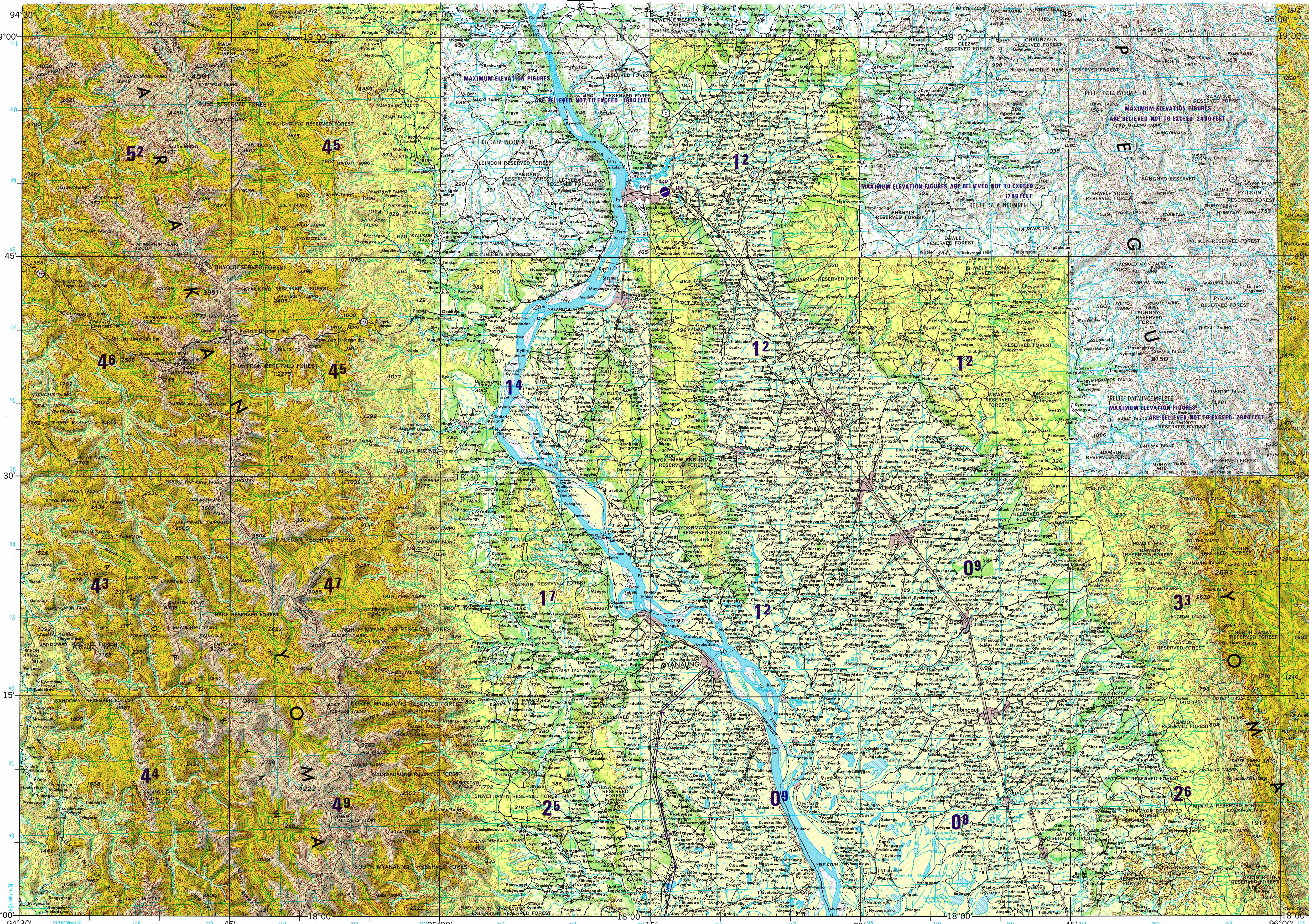
CAUTION
AIR INFORMATION CURRENT THROUGH 15 MARCH 1983

MAGNETIC VARIATION FOR 1980 IS APPROXIMATELY 0°45' W OVER THE ENTIRE AREA. (Annual rate of change 2' increase)

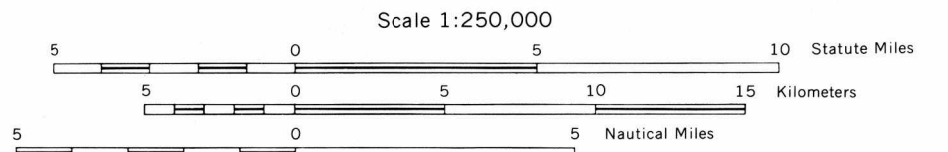
ATTENTION
THIS CHART CONTAINS MAXIMUM ELEVATION FIGURES (MEF)

LIMITED DISTRIBUTION

SCALE 1:250,000
PYE, BURMA
SERIES 1501 AIR SHEET NE 46-8 EDITION 2



JOINT OPERATIONS GRAPHIC (AIR)



ROADS

Dual Highways, Under construction
All weather
Hard surface, two or more lanes wide 13 LANES
Hard surface, one lane wide 13 LANES
Loose or light surface, two or more lanes wide
Loose or light surface, one lane wide
Fair or dry weather, loose surface
Cart track
Foot path, trail
Normal gauge 1 m. (3.31)
Narrow gauge

RAILROADS

Normal gauge 1 m. (3.31)
Narrow gauge

BOUNDARIES

International
Province or state
Landmark feature
Mine

VEGETATION

Woods: brushwood
Plantation
Tropical grass

CONTOUR INTERVAL 200 FEET WITH SUPPLEMENTARY CONTOURS AT 100 FEET RELIEF PARTIALLY SHOWN BY FORM LINES

VERTICAL DATUM: MEAN SEA LEVEL
HORIZONTAL DATUM: INDIAN DATUM

TRANSVERSE MERCATOR PROJECTION

BLUE NUMBERED LINES INDICATE THE 10,000 YARD INDIA ZONE II G, GRID, EVEREST SPHEROID THE LAST FOUR DIGITS OF THE GRID NUMBERS ARE OMITTED

AERODROMES (Military or Civil)

Field limits with runway pattern EDNA/50/1 725
EDNA Name
550 Length of longest runway to nearest hundreds of feet
s-Soft or unimproved surface
u-Unknown surface
725 Elevation
Field limits, with runway pattern unknown
Field limits unknown, with runway pattern
Field limits and runway pattern unknown

HELIPORT

.....
-------	-------

RADIO FACILITIES

RADIO RANGE LF/MF
MULTIPLE RADIO FACILITIES

VISUAL AIDS AND OBSTRUCTIONS

Obstruction 1108 (259)
1108 Elevation of obstruction top above sea level
259 Elevation of obstruction top above ground level
Group obstruction
Radio facility obstruction
Power transmission line
Visual ground sign
Aeroc light, Marine light
CONTROLLED AIRSPACE
AZIZ ATLANTIC AZIZ

TERRAIN ELEVATION

HIGHEST KNOWN ELEVATION 4561 feet at 18°57'N 94°27'E
Spot elevation: Normal, Critical 000 .0000
Horizontal control point:

NOTES

Only obstructions 200 feet or more above ground level are shown. Powerline information and obstructions have been extracted from the most reliable source available. However, there is no assurance that all powerlines and obstructions are shown or that their locations and heights are correct. On this graphic a line is generally considered as being 8 to 15 feet (2.44 to 4.57 meters) in width. THE REPRESENTATION OF INTERNATIONAL BOUNDARIES IS NOT NECESSARILY AUTHORITY. THE ALIGNMENT OF PRIMARY ADMINISTRATIVE BOUNDARIES IS APPROXIMATE.