

SERIES 1501 AIR SHEET NE 38-2 EDITION 1

- POPULATED PLACES
- Over 100,000 **AR RIYAD**
 - 50,000 to 100,000 **AL QATIF**
 - 10,000 to 50,000 **Turayf**
 - 2,000 to 10,000 **Al Uqayr**
 - Less than 2,000 **Dubai**
- ROADS
- Dual highway **4 LANES DUAL**
 - All weather, hard surface **4 LANES**
 - More than two lanes wide **4 LANES**
 - Two lanes wide **4 LANES**
 - One lane wide **4 LANES**
 - All weather, loose or light surface **3 LANES**
 - More than two lanes wide **3 LANES**
 - Two lanes wide **3 LANES**
 - One lane wide **3 LANES**
 - Fair or dry weather, loose surface **3 LANES**
 - Cart track **3 LANES**
 - Footpath, trail **3 LANES**
 - Route marker **3 LANES**
 - Normal gauge, single track 1.44m (4'8 1/2") Double track **3 LANES**
 - Narrow gauge **3 LANES**
- BOUNDARIES
- International **3 LANES**

- OTHER FEATURES
- Area name **NAJD**
 - Mine or quarry **NAJD**
 - Campsite, Ruins, Watermill **NAJD**
 - School, Church, Landmark **NAJD**
 - Mosque, Modern shrine **NAJD**
 - Small reservoir or cistern **NAJD**
 - Well, Perennial, Intermittent, Spring **NAJD**
 - Underground aqueduct with shafts **NAJD**
 - Sabkha or Dry lake, Intermittent lake **NAJD**
 - Single line intermittent stream, Wadi **NAJD**
 - Marsh or swamp; Land subject to inundation **NAJD**
 - Mound, Levee **NAJD**
 - Sand, Distorted surface **NAJD**
 - Dunes, Star, Ripple **NAJD**
 - Horizontal control point **NAJD**
- VEGETATION
- Scattered trees **NAJD**
 - Cultivation **NAJD**
- HYDROGRAPHY
- Rocks, uncovering or awash **NAJD**
 - Exposed wreck **NAJD**
 - Limit of danger; Reef **NAJD**
 - Foreshore flat **NAJD**
 - Depth curve; Lighthouse **NAJD**

TERRAIN ELEVATIONS

Spot elevation, normal, critical

HIGHEST KNOWN elevation is **5732** feet at the following coordinates: Geographic: 19°17'N, 43°48'E Grid: LG7504

± following elevation value indicates accuracy is not within 100 feet.

AERODROMES (Military or Civil)

Runway pattern known **EDNA/50/A 725**

Field limits and runway pattern unknown

HELIPORT

RADIO FACILITIES

VOR VORTAC

TACAN VOR/DME

RADIO RANGE LF/MF

MULTIPLE RADIO FACILITIES

CONTROLLED AIRSPACE

ADIZ

VISUAL AIDS AND OBSTRUCTIONS

Obstruction **1108 (259)**

1108: Elevation of obstruction top, above sea level (259): Elevation of obstruction top, above ground level

Group obstruction

Radio facility obstruction

Power transmission line

Visual ground sign

Aero light; Marine light

CAUTION

Vertical obstructions, including possibilities, have been extracted from the most reliable sources available. However, there is no assurance that all are shown or that their locations or heights are exact.

CAUTION

AIR INFORMATION CURRENT THROUGH 13 MAY 1991

Consult NOTAMS and Flight Information Publications for the latest air information; the DMA Aeronautical Chart Updating Manual or MUD (U.K.) Aeronautical Chart Amendment document, for other chart revision information.

MAGNETIC VARIATION THROUGHOUT CHART AREA FOR 1990 IS APPROXIMATELY 1°45' EAST
(Annual rate of change, 1' increase)

ATTENTION

THIS CHART CONTAINS MAXIMUM ELEVATION FIGURES (MEF)

The Maximum Elevation Figures shown in quadrangles bounded by ticked lines of latitude and longitude are represented in THOUSANDS and HUNDREDS of feet above mean sea level. The MEF is based on information available concerning the highest known feature in each quadrangle, including terrain and obstructions (trees, towers, antennas, etc.).

125

EXAMPLE: 12,500 feet.

LOCATION DIAGRAM

Boundary Representation is Not Necessarily Authoritative

(ONC INDEX SHOWN IN BLUE)

(WAC INDEX SHOWN IN RED/BROWN)

Prepared and published by the Defense Mapping Agency Aerospace Center, St. Louis, Missouri. Compiled May 1991.

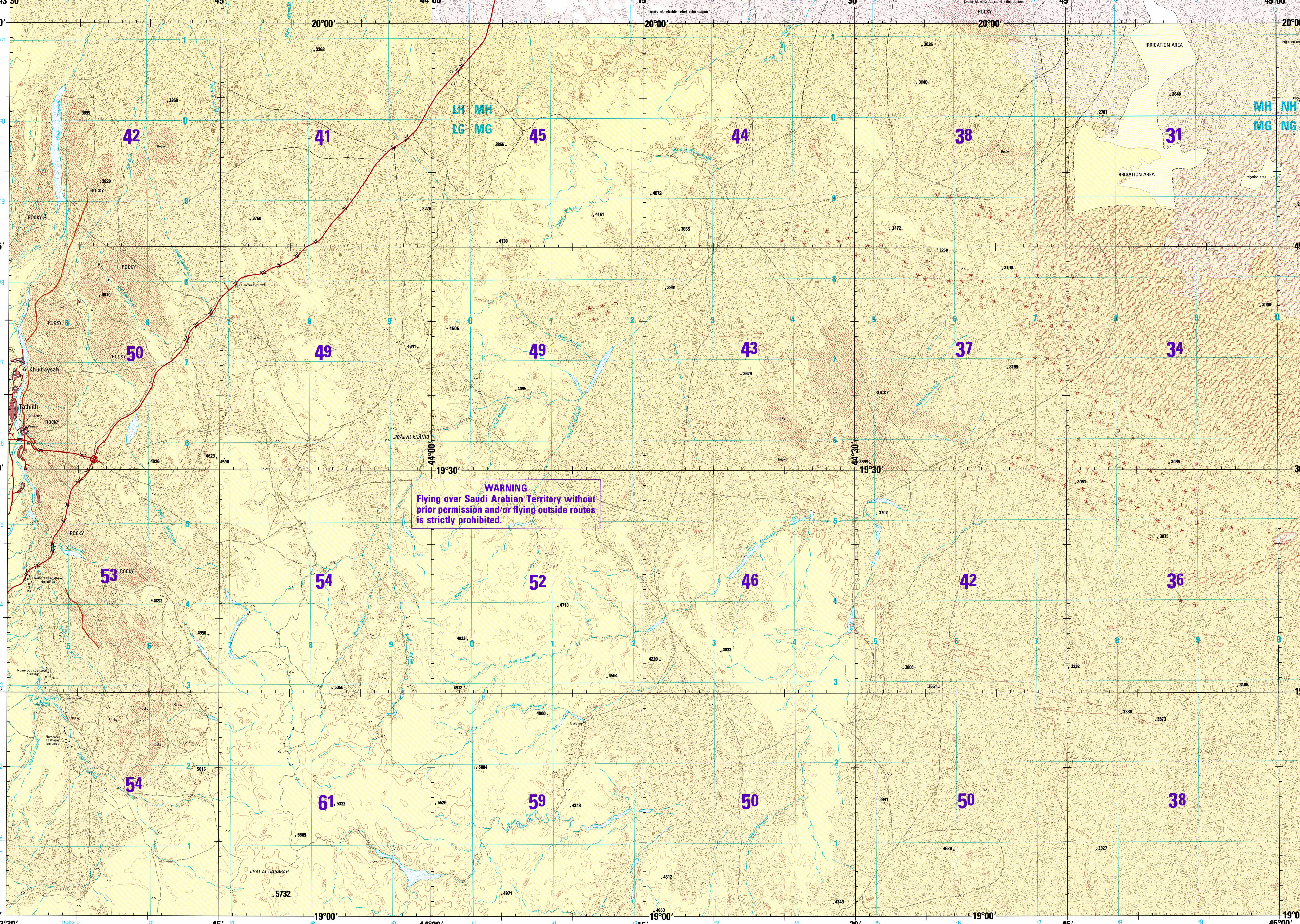
19°00'	19°00'	19°00'	19°00'	19°00'	19°00'
NF 38-9	NF 38-10	NF 38-11	NF 38-12	NF 38-13	NF 38-14
NF 38-15	NF 38-16	NF 38-17	NF 38-18	NF 38-19	NF 38-20
NE 38-1	NE 38-2	NE 38-3	NE 38-4	NE 38-5	NE 38-6
NE 38-7	NE 38-8	NE 38-9	NE 38-10	NE 38-11	NE 38-12
NE 38-13	NE 38-14	NE 38-15	NE 38-16	NE 38-17	NE 38-18
NE 38-19	NE 38-20	NE 38-21	NE 38-22	NE 38-23	NE 38-24
NE 38-25	NE 38-26	NE 38-27	NE 38-28	NE 38-29	NE 38-30

SCALE 1:250,000

TATHLITH, SAUDI ARABIA

SERIES 1501 AIR SHEET NE 38-2 EDITION 1

SERIES 1501 COMPANION SHEET IS EDITION 1



WARNING

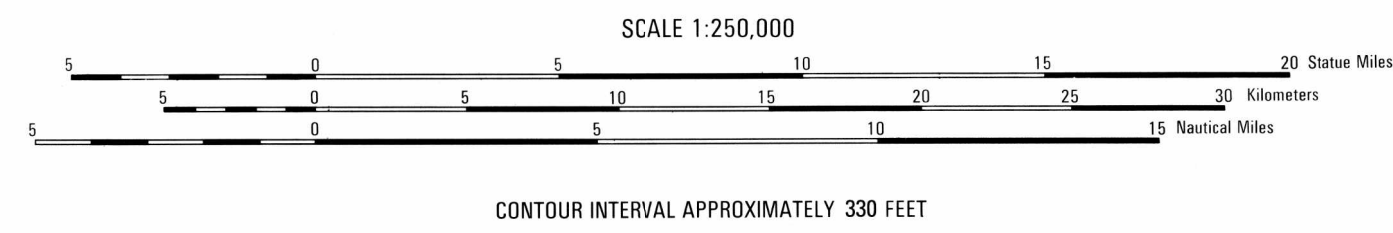
Flying over Saudi Arabian Territory without prior permission and/or flying outside routes is strictly prohibited.

CONVERSION OF ELEVATIONS

FEET	METERS	FEET	METERS
1000	305	10000	3048
900	274	9000	2743
800	244	8000	2438
700	213	7000	2134
600	183	6000	1829
500	152	5000	1524
400	122	4000	1219
300	91	3000	914
200	61	2000	610
100	46	1000	457
100	31	1000	305

DMA IS UPDATING THE MILITARY GRID REFERENCE SYSTEM, SINCE THERE ARE NO SIGNIFICANT CHANGES IN THE GRID VALUES AT THIS SCALE, CONVERSION VALUES ARE PROVIDED IN LIEU OF SHOWING ADDITIONAL GRIDS.

CONVERSION FROM UTM GRID, WGS-84 ELLIPSOID, WGS-84 DATUM TO UTM GRID, INTERNATIONAL ELLIPSOID, EUROPEAN DATUM 10-12 METERS EASTING AND +174 METERS NORTHING.



CONTOUR INTERVAL APPROXIMATELY 330 FEET

BLUE NUMBERED LINES INDICATE THE 10,000 METER UNIVERSAL TRANSVERSE MERCATOR GRID, ZONE 38Q, WORLD GEODETIC SYSTEM 84 ELLIPSOID.

USERS SHOULD REFER CORRECTIONS, ADDITIONS, AND COMMENTS TO THE NIMA OPERATIONAL HELP DESK: 1-800-455-5099; COMMERCIAL: 314-353-8864; OR WRITE TO DIRECTOR, NATIONAL IMAGERY AND MAPPING AGENCY, ATTN: ES, MAIL STOP L-88, 4600 SANGAMORE ROAD, BETHESDA, MD 20816-5003.

GLOSSARY

B'Y well

Jhal mountains

Shu'ib wadi

Sir wadi

Wadi wadi

GEOREF BASIC 15° QUADRANGLE QH

Reprinted by NIMA 12-02

Reliability of this graphic (as determined by standard practice)

GRAPHIC FEATURE	DATE OF INFORMATION
Contours	1991
All other features	1991

NOTES

No obstructions 200 feet or more above ground level are known to exist in this area.

Poverline information and obstructions have been extracted from the most reliable source available. However, there is no assurance that all poverline lines and obstructions are shown or that their locations and heights are correct.

On this graphic a lane is generally considered as being 8 feet (2.5 meters) in width.

ALIGNMENT OF ALL BOUNDARIES IS APPROXIMATE.

Road classification should be referred to with caution.

Horizontal Datum: World Geodetic System 1984

Vertical Datum: Mean Sea Level

Transverse Mercator Projection

Datum Conversion from WGS-84 Datum to European Datum is +4.8" Latitude and +0.5" Longitude.

Horizontal Datum: World Geodetic System 1984

Vertical Datum: Mean Sea Level

Transverse Mercator Projection

Datum Conversion from WGS-84 Datum to European Datum is +4.8" Latitude and +0.5" Longitude.

Horizontal Datum: World Geodetic System 1984

Vertical Datum: Mean Sea Level

Transverse Mercator Projection

Datum Conversion from WGS-84 Datum to European Datum is +4.8" Latitude and +0.5" Longitude.

NSN 764101 4098847

NIMA Ref No 1501ANE3802

ED NO 001