

**SERIES 1501 AIR SHEET NE 28-16 EDITION 1**  
 COMPANION SERIES 1501 SHEET IS EDITION 1

**LEGEND**

**POPULATED PLACES**

- Over 100,000
- 25,000 to 100,000
- 2,000 to 25,000
- 200 to 10,000
- Less than 2,000

**ROADS**

- All weather, hard surface
- Two or more lanes wide
- All weather, loose or light surface
- Two or more lanes wide
- All weather, hard surface
- One lane wide
- Fair or dry weather, loose surface, dirt road
- One lane wide
- Cart track
- Footpath, trail

**ROUTE MARKERS**

- International, National, Secondary

**RAILROADS**

- Normal gauge
- Narrow gauge
- Station

**BOUNDARIES**

- International
- Primary administrative
- Reservation

**HORIZONTAL CONTROL POINTS**

- Astronomic position
- Trigonometric position

**TERRAIN ELEVATIONS**

HIGHEST KNOWN elevation is **1522** feet at 16°58'N 12°02'W

Spot elevation: Normal, Critical

**Dunes**

- Sand
- Distorted surface
- Escarpment, Levee
- Isolated rock, Mound, Cliff
- Christian church, School
- Kraal; Landmark feature; Landmark object; Mine

**VEGETATION**

- Woods/bushwood
- Scattered trees
- Orchard, plantation, vineyard

**HYDROGRAPHY**

- Well, Spring, Salt evaporator
- Wadi; Sebka, wet depression
- Land subject to inundation
- Swamp, marsh, Rice paddy
- Depth curves in fathoms
- Wreck: Exposed, Sunken
- Rocks: Awash, Sunken
- Foreshore flat, Mangrove
- Limit of danger; Reef

**AERODROMES (Military or Civil)**

- EDNA/50/725
- Field limits with runway pattern
- EDNA-Name
- 50-Length of longest runway to nearest hundreds of feet
- 725-Elevation
- Field limits, with runway pattern unknown
- Field limits unknown, with runway pattern
- Field limits and runway pattern unknown

**SEAPLANE BASE**

**SEAPLANE (EMERGENCY)**

**HELIPORT**

**RADIO FACILITIES**

- RADIO RANGE LF/MF
- MULTIPLE RADIO FACILITIES
- CONTROLLED AIRSPACE
- ADIZ
- ATLANTIC ADIZ

**VISUAL AIDS AND OBSTRUCTIONS**

- Obstruction
- 1108-Elevation of obstruction top, above sea level
- (259)-Elevation of obstruction top, above ground level
- Group obstruction
- Radio facility obstruction
- Power transmission line
- Ocean station vessel (Normal position)
- Visual ground sign
- Aero light, Marine light

**CAUTION**  
 AIR INFORMATION CURRENT THROUGH 13 NOVEMBER 1967  
 Consult Notices to Airmen (NOTAMS) and Flight Information Publications (FLIPs) for the latest air information; the Chart Updating Manual (CHUM) for other chart revision information.

**51 81-**

**NOTES**

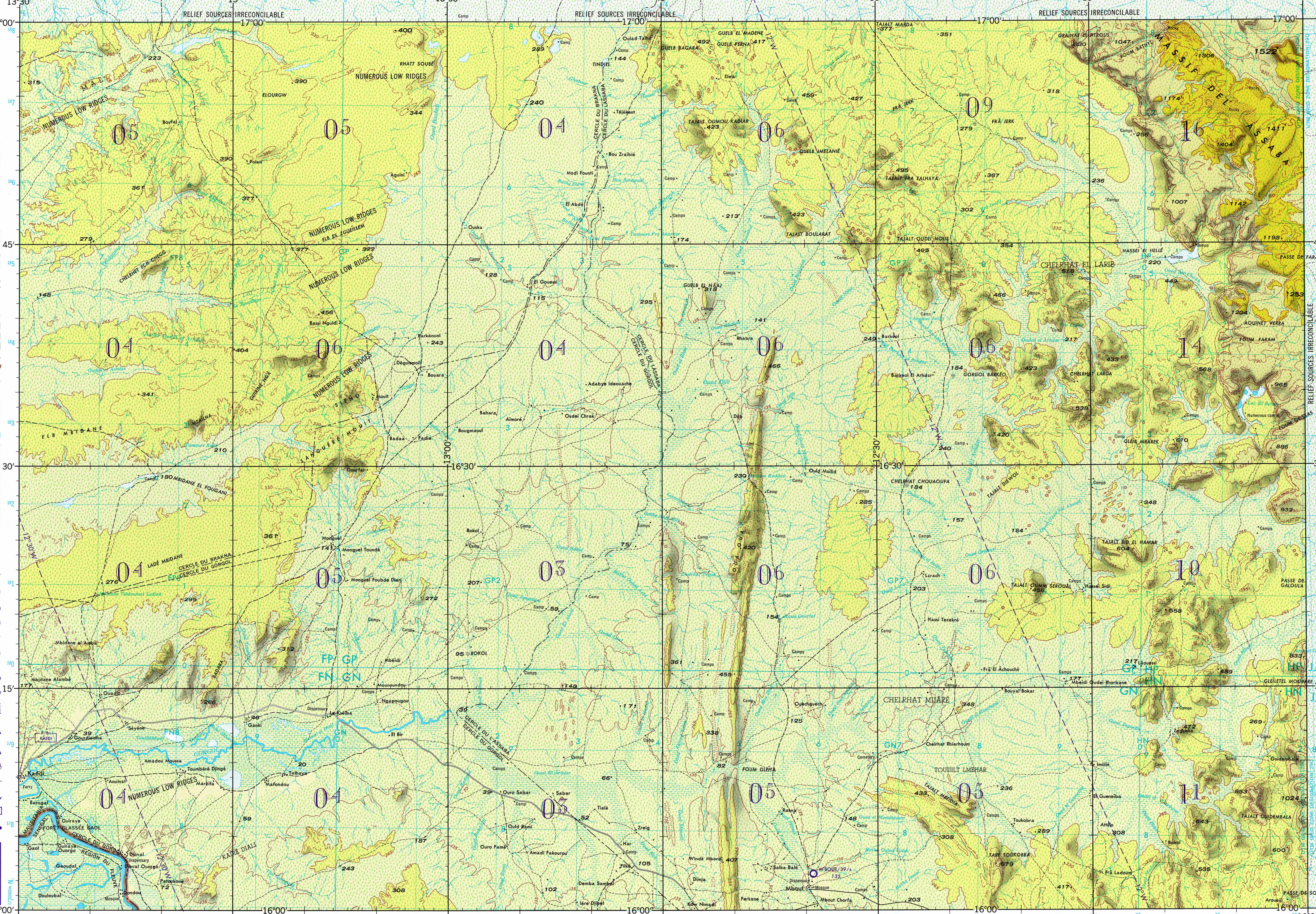
No obstructions 200 feet or more above ground level are known to exist within this area.

**LINES OF EQUAL MAGNETIC VARIATION FOR 1965**  
 (Annual rate of change—7' decrease)

**THE REPRESENTATION OF INTERNATIONAL BOUNDARIES IS NOT NECESSARILY AUTHORITY.**  
 On this map a line is generally considered as being 8 to 16 feet (2.4 to 4.86 meters) in width.

**SCALE 1:250,000**  
**MBOUT, MAURITANIA**

**SERIES 1501 AIR SHEET NE 28-16 EDITION 1**  
 COMPANION SERIES 1501 SHEET IS EDITION 1



**JOINT OPERATIONS GRAPHIC (AIR)**

Scale 1:250,000

5 0 5 10 15 20 25 30 Statute Miles  
 5 0 5 10 15 20 25 30 Kilometers  
 5 0 5 10 15 Nautical Miles

CONTOUR INTERVAL APPROXIMATELY 135 FEET WITH SUPPLEMENTARY CONTOURS AT 70 FOOT INTERVALS

TRANSVERSE MERCATOR PROJECTION

**GLOSSARY**

- Ain.....springs
- Belel.....wet sand or
- Bou.....well, sand of
- Bou.....well, waterhole
- Cercle.....primary administrative boundary
- Chegg.....long depression
- Eib.....(dune)
- Foum.....outlet, estuary, mouth of valley
- Fra.....delta at mouth of valley
- Gleb.....dune, hill
- Guelb.....hill, dune
- Hadji.....well
- Radié.....hillocks, dune
- La.....lake
- Massif.....mountain in block
- Qued.....wadi, watercourse, stream
- Passé.....pass
- Région.....primary administrative boundary
- Sangué.....ridge
- Tajalt.....hill, long depression
- Tamourt.....waterhole
- Tarf.....spur, ridge

**RELIABILITY OF THIS MAP**

Accuracy, as related to control of map:  
 Horizontal positions...in excess of 1840 ft.  
 Contours...in excess of 250 ft.

Compiled from best available source materials 1966.

Horizontal Datum: Independent Astronomic Control  
 Vertical Datum: Mean Sea Level

**LOCATION DIAGRAM FOR NE 28-16 (WAC INDEX SHOWN IN BLUE)**

|          |          |          |          |          |
|----------|----------|----------|----------|----------|
| NE 28-6  | NE 28-7  | NE 28-8  | NE 28-9  | NE 28-10 |
| NE 28-10 | NE 28-11 | NE 28-12 | NE 28-13 | NE 28-14 |
| NE 28-14 | NE 28-15 | NE 28-16 | NE 28-17 | NE 28-18 |
| NE 28-18 | NE 28-19 | NE 28-20 | NE 28-21 | NE 28-22 |

**ELEVATION TINTS**

|      |      |
|------|------|
| 1050 | FEET |
| 525  |      |
| 265  |      |
| 0    |      |

**GRID ZONE DESIGNATION: 28Q**  
 100,000 M. SQUARE IDENTIFICATION

|    |    |    |     |
|----|----|----|-----|
| FP | GP | HP | 180 |
| FN | GN | HN | 190 |
| 70 | 80 |    |     |

**TO GIVE A STANDARD REFERENCE ON THIS SHEET TO NEAREST 100 METERS**

**SAMPLE POINT: SABAR**

- Read letters identifying 100,000 meter square in which the point lies.
- Locate first WESTING grid line to LEFT of point and read LARGE figure following the line either on the top or bottom margin, or on the line itself.
- Estimate tenths from grid line to point.
- Locate first NORTHING grid line BELOW point and read LARGE figure following the line either on the left or right margin, or on the line itself.
- Estimate tenths from grid line to point.

**SAMPLE REFERENCE:** GN2784  
 If reporting beyond 10° in any direction, prefix Grid Zone Designation, e.g., 28QDN2784

**PREPARED UNDER THE DIRECTION OF THE DEFENSE INTELLIGENCE AGENCY AND PUBLISHED BY THE ARMY MAP SERVICE, CORPS OF ENGINEERS, U. S. ARMY, WASHINGTON, D. C. COMPILED IN 1966 FROM BEST AVAILABLE SOURCE MATERIALS.**

**USERS SHOULD REFER CORRECTIONS, ADDITIONS, AND COMMENTS TO THE NIMA OPERATIONAL HELP DESK: 1-800-485-9889 COMMERCIAL 314-383-4884 OSN 893-4884; OR WRITE TO DIRECTOR, NATIONAL IMAGERY AND MAPPING AGENCY, ATTN: ES, MAIL STOP 1-8, 4600 SANDHURST ROAD, BETHESDA, MD 20816-5000.**

**BLUE NUMBERED LINES INDICATE THE 10,000 METER UNIVERSAL TRANSVERSE MERCATOR GRID, ZONE 28, CLARKE 1880 SPHEROID**

**NSN 7641014970488**  
 NIMA Ref No: 1501ANE2816