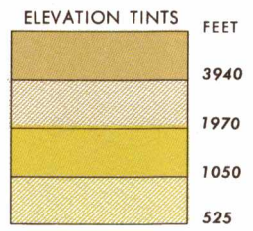


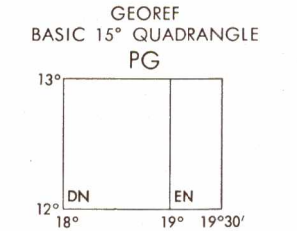
SERIES 1501 AIR SHEET ND 34-13 EDITION 1  
COMPANION SERIES 1501 SHEET IS EDITION 1



RELIABILITY OF THIS MAP  
Accuracy, as related to control of map:  
Horizontal positions... in excess of 1/4800  
Contours... within 135 ft.  
Compiled from best available source materials 1966.  
Road classification not verified by reconnaissance  
Vertical Datum: Mean Sea Level

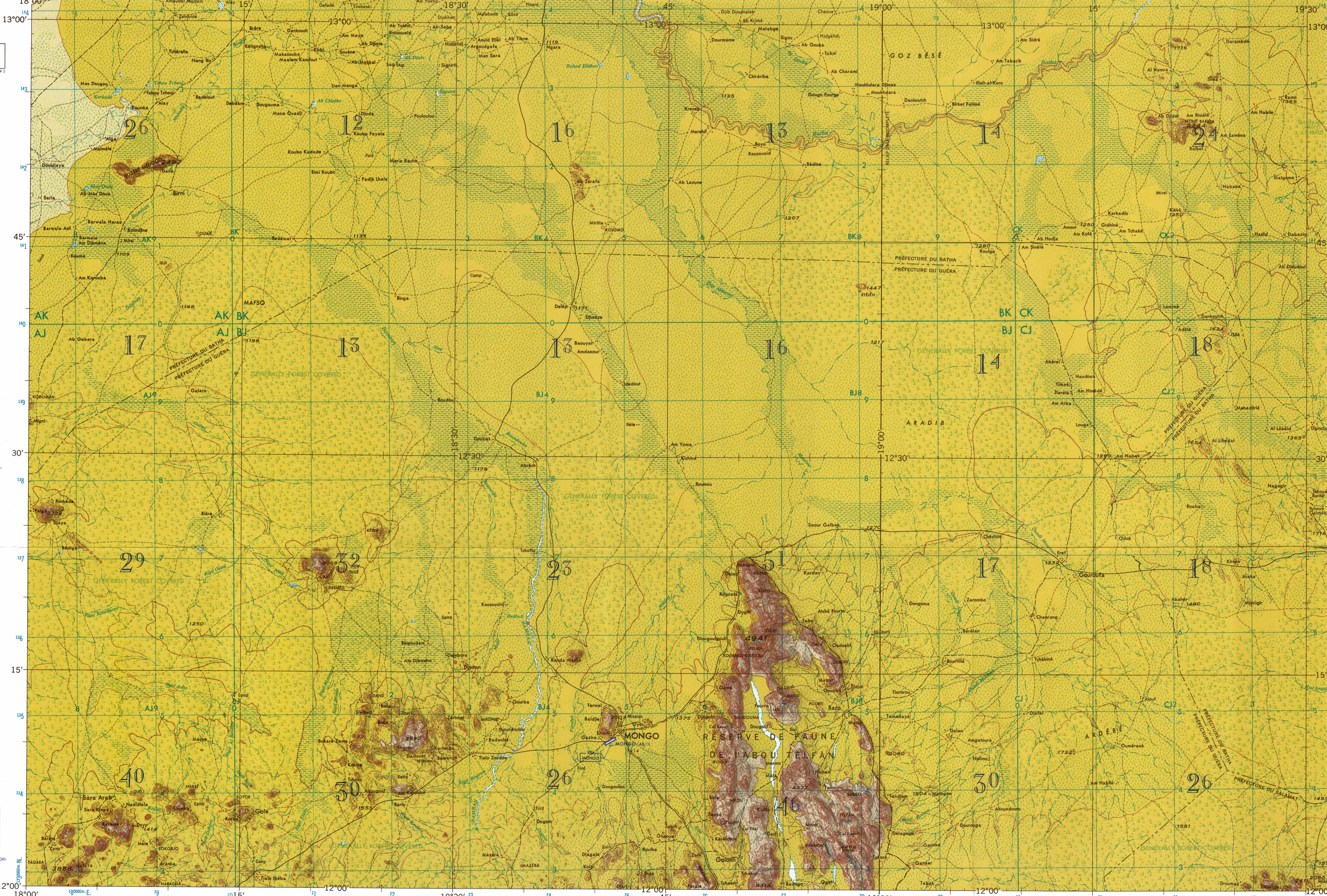
LOCATION DIAGRAM FOR ND 34-13  
(WAC INDEX SHOWN IN BLUE)

ND 33-12	ND 34-9	ND 34-10
ND 33-16	CHAD ND 34-13	ND 34-14
NC 33-4	761 786 NC 34-1	NC 34-2



CAUTION  
AIR INFORMATION CURRENT THROUGH 11 JULY 1967  
Consult Notices to Airmen (NOTAMS) and Flight Information Publications (FLIPs) for the latest air information; the Chart Updating Manual (CHUM) for other chart revision information.

MAGNETIC VARIATION FOR 1965 IS APPROXIMATELY 2°40' OVER THE ENTIRE AREA.  
(Annual rate of change—4' decrease)



Prepared under the direction of the Defense Intelligence Agency and published by Army Map Service, Corps of Engineers, U. S. Army, Washington, D. C. Compiled in 1966 from best available source materials.

On this map a lane is considered as being a minimum of 2.5 meters (8 feet) in width

LEGEND

POPULATED PLACES: First importance, Second importance, Third importance, Fourth importance, Fifth importance

ROADS: All weather, Hard surface, two or more lanes wide, Loose or light surface, two or more lanes wide, Hard surface, one lane wide, Loose or light surface, one lane wide, Fair or dry weather, loose surface, Cart track, Footpath, trail, Horizontal control point: Astronomic; Trigonometric

RAILROADS: Normal gauge, Narrow gauge, Spot elevation in feet, Landmark feature, Christian church, Wall, Levee, Well, Spring, International, Major administrative, Primary administrative, WADI, Reservation, Isolated rocks; Escarpment, Cliff, rock outcrop, Land subject to inundation, Swamp, Sabkha, Rocks, Sunken; Awash, Mangrove, Limits of danger; Reef, Forebare flat, Depth curves in fathoms

BOUNDARIES: International, Major administrative, Primary administrative, WADI, Reservation

Col. .... mountain pass  
Hoshré..... mountain  
Mont..... mountain peak  
Oudé..... mountain peak  
Préfecture..... primary administrative division  
Réserve de faune..... game preserve  
Rég..... stream

# JOINT OPERATIONS GRAPHIC (AIR)

Scale 1:250,000  
5 10 15 20 25 30 Statute Miles  
5 10 15 20 25 30 Kilometers  
5 10 15 Nautical Miles

CONTOUR INTERVAL APPROXIMATELY 135 FEET

TRANSVERSE MERCATOR PROJECTION

USERS SHOULD REFER CORRECTIONS, ADDITIONS, AND COMMENTS TO THE NIMA OPERATIONAL HELP DESK: 1-800-455-0889; COMMERCIAL 314-263-4864; OR WRITE TO: DIRECTOR, NATIONAL IMAGERY AND MAPPING AGENCY, ATTN: ES, MAIL STOP L-88, 4800 SANGAMORE ROAD, BETHESDA, MD 20818-5003.

BLUE NUMBERED LINES INDICATE THE 10,000 METER UNIVERSAL TRANSVERSE MERCATOR GRID, ZONE 34, CLARKE 1880 SPHEROID

AERODROMES (Military or Civil) EDNA/50/5 725

Field limits with runway pattern  
EDNA—Name  
50—Length of longest runway to nearest hundreds of feet  
1—Soft or unimproved surface  
725—Elevation  
Field limits, with runway pattern unknown

Field limits unknown, with runway pattern

Field limits and runway pattern unknown

SEAPLANE BASE  
SEAPLANE (EMERGENCY)  
HELIPORT  
RADIO FACILITIES  
RADIO RANGE 1F/MF  
MULTIPLE RADIO FACILITIES

CONTROLLED AIRSPACE  
ADIZ  
VISUAL AIDS AND OBSTRUCTIONS  
Obstruction  
1108—Elevation of obstruction top, above sea level.  
(239)—Elevation of obstruction top, above ground level.  
Group obstruction  
Radio facility obstruction  
Power transmission line  
Ocean station vessel (Normal position)  
Visual ground sign  
Aero light, Marine light

ATLANTIC ADIZ

GRID ZONE DESIGNATION: 34P  
100,000 M. SQUARE IDENTIFICATION  
AK BK CK  
AJ BJ CJ  
30 30

TO GIVE A STANDARD REFERENCE ON THIS SHEET TO NEAREST 1000 METERS  
SAMPLE POINT: DITCHEN  
1. Read letters identifying 100,000 meter square to which the point lies.  
2. Locate first VERTICAL grid line to LEFT of point and read LARGE figure labeling the line within the top or bottom margin, or on the line itself.  
3. Estimate tenths from grid line to point.  
4. Locate first HORIZONTAL grid line BELOW point and read LARGE figure labeling the line within the left or right margin, or on the line itself.  
5. Estimate tenths from grid line to point.  
6. If reporting beyond 10' in any direction, prefix Grid Zone Designation, ex: 34P812956

NOTES  
No obstruction 200 feet or more above ground level are known to exist within this area.

TERRAIN ELEVATIONS  
HIGHEST KNOWN elevation is 4941 feet at 12°17'N, 18°52'E

SCALE 1:250,000  
MONGO, CHAD  
SERIES 1501 AIR SHEET ND 34-13 EDITION 1  
COMPANION SERIES 1501 SHEET IS EDITION 1

HIGHEST TERRAIN elevations for each 15 MINUTE QUADRANGLE are represented in THOUSANDS and HUNDREDS of feet. They are omitted where relief information is inadequate. A minus sign (-) following the figure indicates that the figure is based on an estimated elevation.  
EXAMPLES:  
51 81-

Printed by NIMA 06-02  
NSN 7641014970486  
NIMA Ref No. 1501AND3413  
ED NC 001