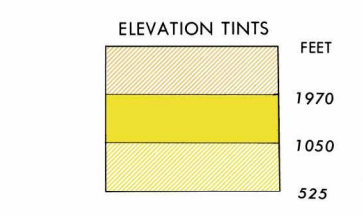
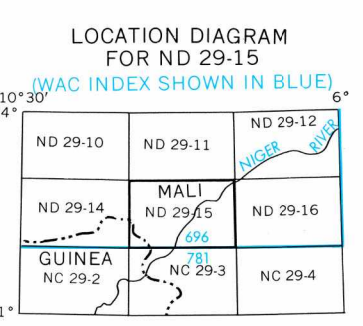


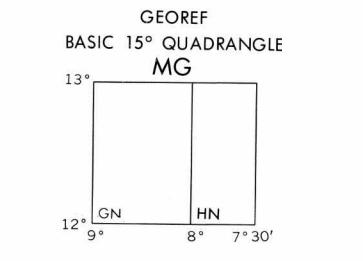
SERIES 1501 AIR SHEET ND 29-15 EDITION 2



RELIABILITY OF THIS MAP Accuracy as related to control of map Horizontal positions within 1:100 ft. Contours within 1:1 ft. Compiled from best available source materials 1968



GLOSSARY Fleuve... river Forêt domaniale... state forest KO... stream Koukou... hills, mountain Monts... mountains Rivière... stream



AIR INFORMATION CAUTION THROUGH 6 SEPTEMBER 1978 Consult Notices to Airmen (NOTAMS) and Flight Information Publications (FIPs) for the latest air information; the Chart Updating Manual (CHUM) for other chart revision information.

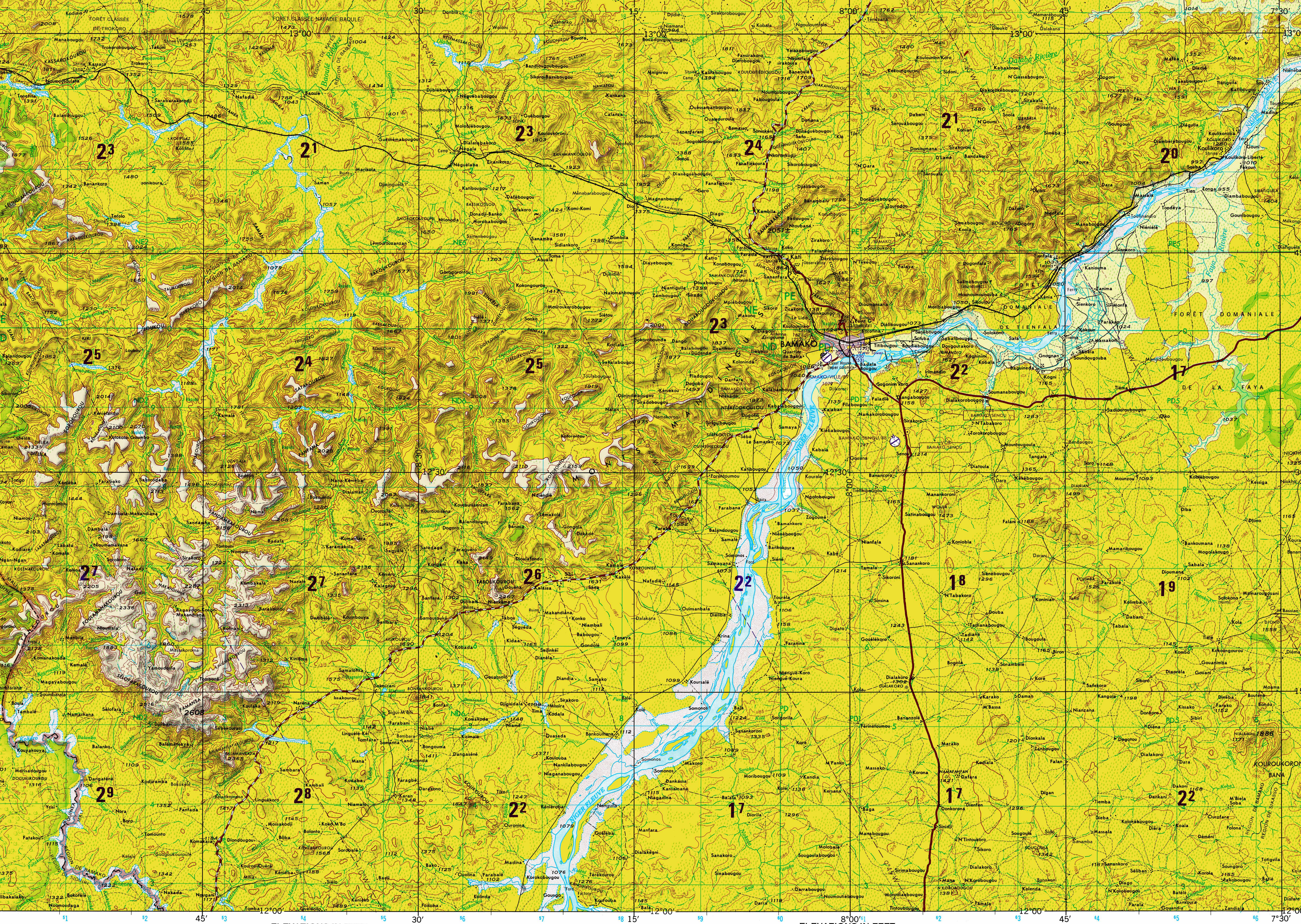
UNITS OF EQUAL MAGNETIC VARIATION FOR 1975 (Annual rate of change 6 degrees)

ATTENTION THIS CHART CONTAINS MAXIMUM ELEVATION FIGURES (MEF) The Maximum Elevation Figures shown in quadrangles bounded by solid lines and height are represented by TENS, HUNDREDS and FEET above mean sea level. The MEF is based on information available concerning the highest known features in each quadrangle, including terrain and obstructions (towers, antennas, etc.).

SCALE 1:250,000 BAMAKO, MALI

SERIES 1501 AIR SHEET ND 29-15 EDITION 2

COMPANION SERIES 1501 SHEET IS EDITION 1



ELEVATIONS IN FEET

JOINT OPERATIONS GRAPHIC (AIR)

Scale 1:250,000 5 0 5 10 Statute Miles 5 0 5 10 15 Kilometers

CONTOUR INTERVAL APPROXIMATELY 135 FEET

TRANSVERSE MERCATOR PROJECTION

BLUE NUMBERED LINES INDICATE 10,000 METER UNIVERSAL TRANSVERSE MERCATOR GRID, ZONE 29, CLARKE 1880 SPHEROID

LEGEND

ROADS

- All weather, hard surface
- Two or more lanes wide
- All weather, loose or light surface
- Two or more lanes wide
- All weather, hard surface
- One lane wide
- All weather, loose or light surface
- One lane wide
- Ear or dirt weather, loose surface, dirt road
- Footpath, trail
- Cart track

RAILROADS

- Normal gauge
- Narrow gauge
- Streetcar

BOUNDARIES

- International
- Primary administrative
- Reservation

VEGETATION

- Wooded/bushwood
- Scattered trees
- Orchard, plantation, vineyard
- Rice paddy

AERODROMES (Military or Civil) EDNA/50's 725 Field limits with runway pattern EDNA-Name 50-Length of longest runway to nearest hundreds of feet -Soft or unimproved surface 725-Elevation Field limits, with runway pattern unknown Field limits unknown, with runway pattern Field limits and runway pattern unknown HELIPORT

CONTROLLED AIRSPACE ATLANTIC ADIZ VISUAL AIDS AND OBSTRUCTIONS Obstruction 1108-Elevation of obstruction top, above sea level. (259)-Elevation of obstruction top, above ground level. Group obstruction Radio facility obstruction, Aero light, Marine light. Power transmission line TERRAIN ELEVATIONS HIGHEST elevation is 2608 feet located at 12°14'N, 8°46'W. Following elevation indicates accuracy is not within 27 feet.

NOTES: On this map a lane is generally considered as being 8 to 14 feet in width. THIS REPRESENTATION OF INTERNATIONAL BOUNDARIES IS NOT NECESSARILY AUTHORITATIVE. Names for symbolized populated places are omitted where information is not available. Only obstructions 200 feet or more above ground level are shown.

USERS SHOULD REFER CORRECTIONS, ADDITIONS, AND COMMENTS TO THE NSA OPERATIONAL HELP DESK: 1-800-455-4899; COMMERCIAL 314-283-4884; OSN 693-4884; OR WRITE TO: DIRECTOR, NATIONAL GEOSPATIAL-INTELLIGENCE AGENCY, ATTN: ES, MAIL STOP L-86, 4880 SANGAMORE ROAD, BETHESDA, MD 20818-5003.