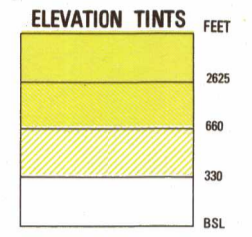


SERIES 1501 AIR SHEET ND 16-08 EDITION 3

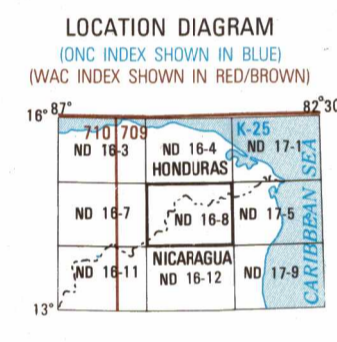


RELIABILITY OF THIS GRAPHIC

CONFIABILIDAD DE ESTE GRÁFICO

Horizontal Datum: North American Datum 1983 Vertical Datum: Mean Sea Level Transverse Mercator Projection

GLOSSARY-GLOSSARIO table listing geographical features and their symbols in both English and Spanish.



CONVERSION OF ELEVATIONS table converting feet to meters and vice versa.

GEOREF BASIC 15° QUADRANGLE 66

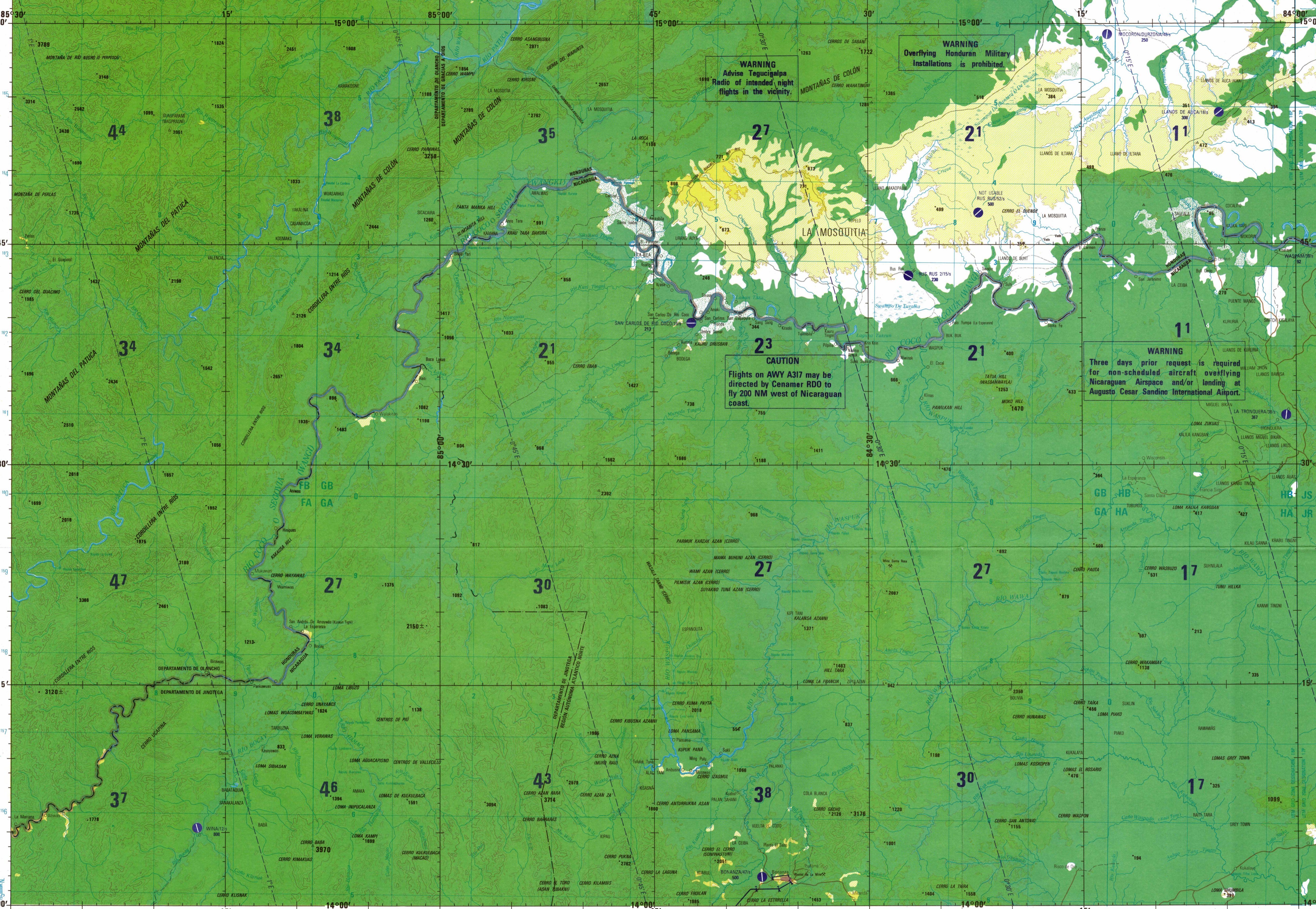
ATTENTION THIS CHART CONTAINS MAXIMUM ELEVATION FIGURES (MEF)

CAUTION Vertical obstructions, including powerlines, have been extracted from the spot elevation source

CAUTION AIR INFORMATION CURRENT THROUGH 25 NOVEMBER 1997

LIMITED DISTRIBUTION Distribution authorized to the U.S. Dept. of Defense...

SCALE 1:250,000 BONANZA HONDURAS; NICARAGUA



WARNING Advise Tegucigalpa Radio of intended night flights in the vicinity.

WARNING Overflying Honduran Military Installations is prohibited.

CAUTION Flights on AWY A317 may be directed by Cenamer RDO to fly 200 NM west of Nicaraguan coast.

WARNING Three days prior request is required for non-scheduled aircraft overflying Nicaraguan Airspace and/or landing at Augusto Cesar Sandino International Airport.

ELEVATIONS IN FEET ELEVACIONES EN PIES

JOINT OPERATIONS GRAPHIC (AIR)

ELEVATIONS IN FEET ELEVACIONES EN PIES

ROADS-CAMINOS table describing road types and their symbols.

BOUNDARIES-LIMITES table describing administrative boundaries.

VEGETATION-VEGETACION table describing vegetation types.

Scale bars, contour interval information, and coordinate conversion details.

AERODROMES (Military or Civil) table listing airports and their symbols.

CONTROLLED AIRSPACE table listing air traffic control zones.

VISUAL AIDS AND OBSTRUCTIONS table listing navigation aids.

NOTES-NOTES section providing additional information and warnings.

Technical details including sample 1:000 meter reference, grid information, and distribution notes.

NSN 764 10 14 102319