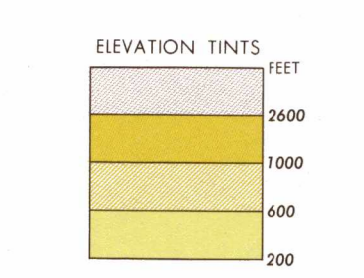


SERIES 1501 AIR SHEET NC 33-5 EDITION 3
SERIES 1501 COMPANION SHEET IS EDITION 2



RELIABILITY OF THIS GRAPHIC (as determined by standard practices)

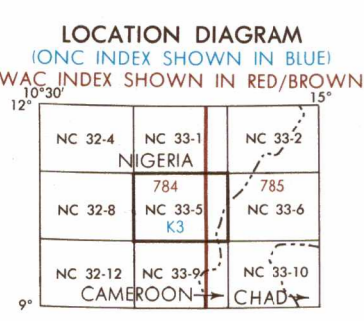
| PLOTTING ACCURACY | |
|-------------------|---------|
| CYCLOASSURANCE | AREA I |
| Horizontal | 410 ft. |
| Vertical | 82 ft. |
| Contours | 66 ft. |

| GRAPHIC FEATURES | | DATE OF INFORMATION | |
|--------------------|---------|---------------------|---------|
| AREA I | AREA II | AREA I | AREA II |
| Main-made features | 1965 | 1964 | 1964 |
| Hydrography | 1959 | 1954 | 1954 |
| Vegetation | 1965 | 1963 | 1963 |
| Contours | 1965 | 1963 | 1963 |
| Air information | 1973 | 1973 | 1973 |
| Road information | 1969 | 1970 | 1970 |

Horizontal Datum: Nigeria; Cameroonian Independent Stations
Vertical Datum: Mean Sea Level
Transverse Mercator Projection

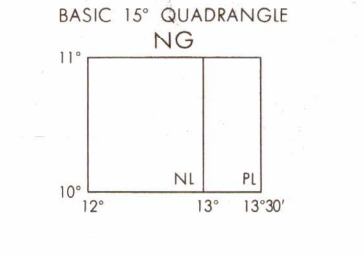
GLOSSARY

| | |
|---------------|---------------------------------|
| Aligula | peak |
| Camp | camp |
| Department | primary administrative division |
| Forêt | forest |
| Hôpital | hospital |
| Lac | lake |
| Marché | market |
| Mayo | stream |
| Mines d'étain | tin mine |
| Mont | mountain |
| Montagnes | mountains |
| Monts | mountains |
| Plaine | plain |



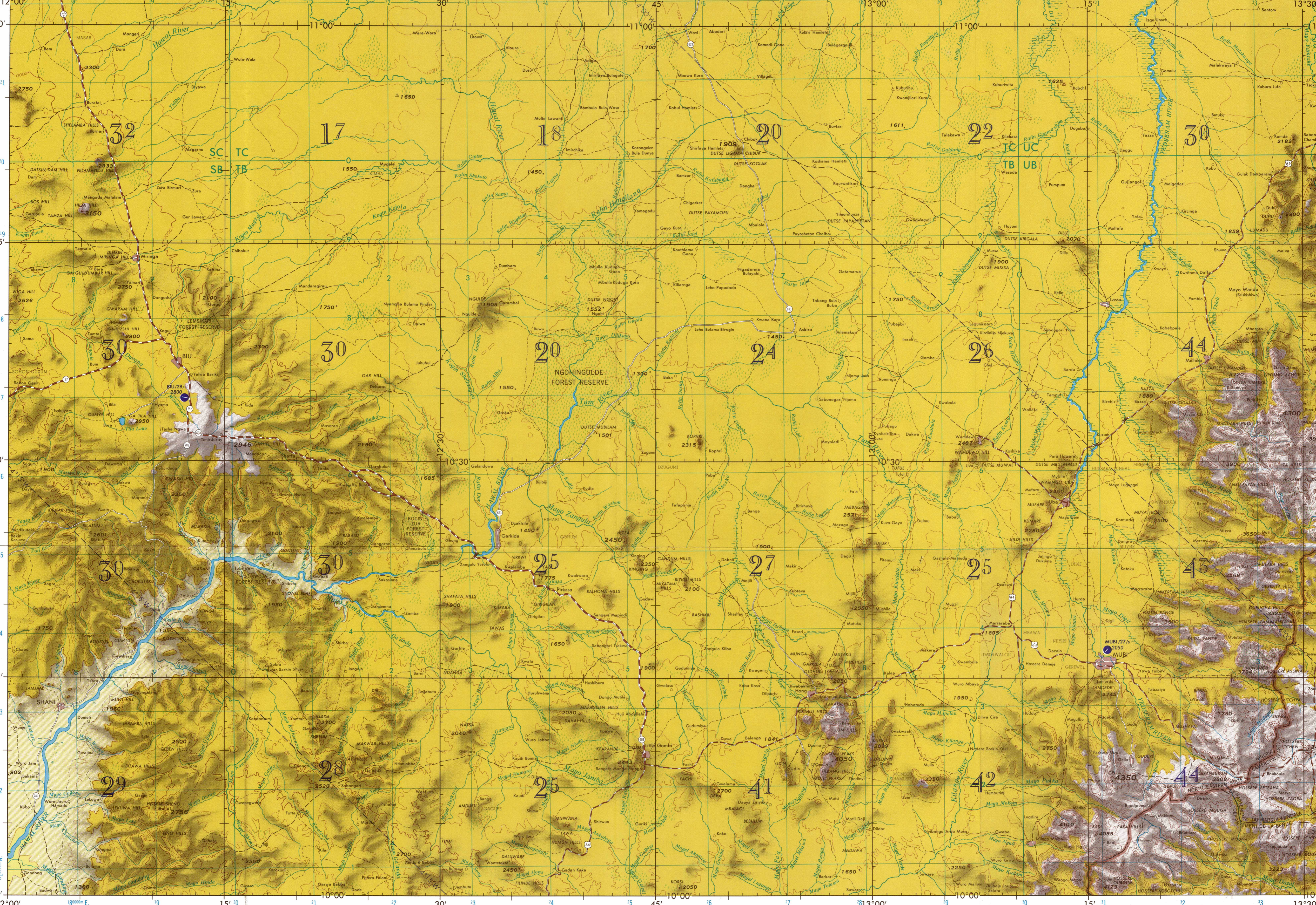
CONVERSION OF ELEVATIONS

| FEET | METERS |
|------|--------|
| 1000 | 304.8 |
| 900 | 274.3 |
| 800 | 243.8 |
| 700 | 213.3 |
| 600 | 182.9 |
| 500 | 152.4 |
| 400 | 121.9 |
| 300 | 91.4 |
| 200 | 60.9 |
| 150 | 45.7 |
| 100 | 30.5 |



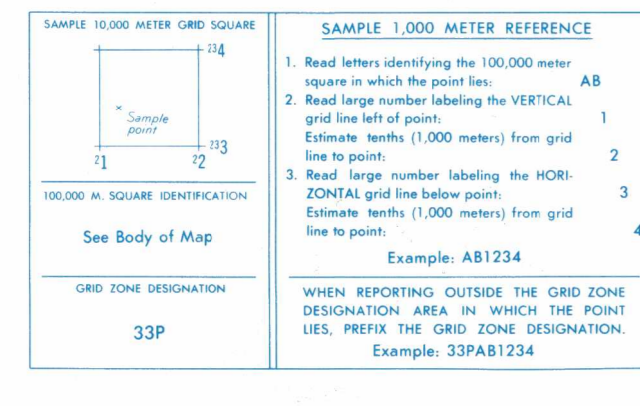
CAUTION
AIR INFORMATION CURRENT THROUGH 16 JULY 1973
Consult NOTAMS and Flight Information Publications for the latest air information; the 5000 Aeronautical Chart (Updating Manual) M-100 (R-1) Aeronautical Chart Amendment document, for other chart related information.

INES OF EQUAL MAGNETIC VARIATION FOR 1970 (Annual rate of change 4' decrease).



Prepared and published by the Defense Mapping Agency Topographic Center, Washington, D. C. Compiled September 1972.

SCALE 1:250,000
MUBI
NIGERIA; CAMEROON
SERIES 1501 AIR SHEET NC 33-5 EDITION 3
SERIES 1501 COMPANION SHEET IS EDITION 2



POPULATED PLACES

| | |
|-------------------|---------------|
| First importance | IBADAN |
| Second importance | ABECKUTA |
| Third importance | ERUWA |
| Fourth importance | Gbodogbo |
| Fifth importance | Asip-Oniyangi |

BOUNDARIES

| | |
|------------------------|---|
| International | — |
| Primary administrative | — |
| Reservation | — |

HYDROGRAPHY

| | |
|----------------------------|---|
| Swamp or marsh | — |
| Mangrove | — |
| Land subject to inundation | — |
| Sand | — |

ROADS

| | |
|------------------------------------|---------------------|
| All weather, hard surface | — |
| Two or more lanes | Principal Secondary |
| One lane | — |
| All weather, loose surface | — |
| Two or more lanes | 3 LANES |
| One lane | — |
| Fair or dry weather, loose surface | — |
| Track trail | — |

RAILROADS

| | |
|----------------------------|--------------|
| Normal gauge 1.067 m. 3'6" | Single track |
|----------------------------|--------------|

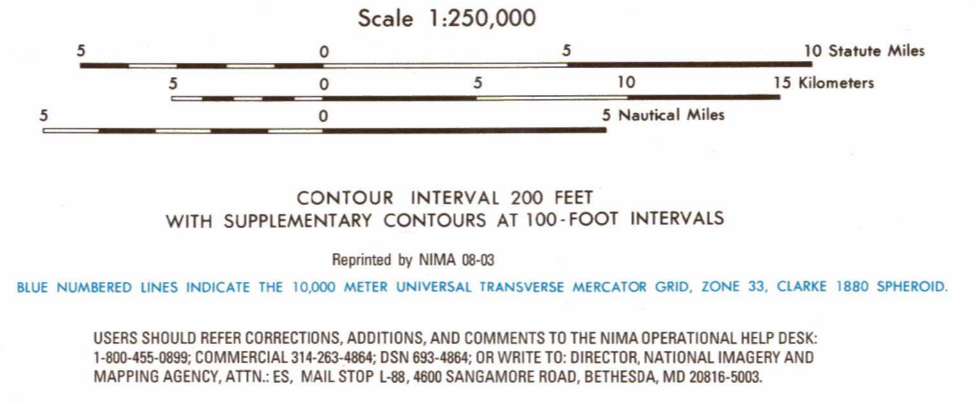
OTHER FEATURES

| | |
|----------------------------|---|
| Horizontal control | — |
| Landmark feature or object | — |

VEGETATION

| | |
|-----------------|---|
| Jungle | — |
| Scattered trees | — |

JOINT OPERATIONS GRAPHIC (AIR)



AERODROMES (Military or Civil)

| | |
|---|-----|
| EDNA-50's | 725 |
| Field limits with runway pattern | — |
| EDNA-Name | — |
| 50-Length of longest runway to nearest hundreds of feet | — |
| Soft or unimproved surface | — |
| Unknown surface | — |
| 725-Elevation | — |
| Field limits, with runway pattern unknown | — |
| Field limits unknown, with runway pattern | — |
| Field limits and runway pattern unknown | — |
| SEAPLANE BASE | — |
| SEAPLANE (EMERGENCY) | — |
| HELIPORT | — |

CONTROLLED AIRSPACE

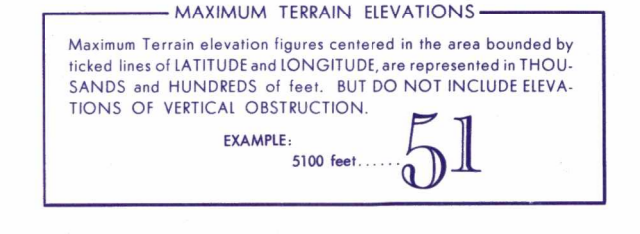
| | |
|---------------|---|
| ADIZ | — |
| ATLANTIC ADIZ | — |

VISUAL AIDS AND OBSTRUCTIONS

| | |
|---|------|
| Obstruction | 1108 |
| 1108-Elevation of obstruction top, above sea level | — |
| 1299-Elevation of obstruction top, above ground level | — |
| Group obstruction | — |
| Radio facility obstruction | — |
| Power transmission line | — |

TERRAIN ELEVATIONS

| | |
|----------------------------------|-------------------------------|
| Spot elevation, normal; critical | *2120 *2756 |
| HIGHEST KNOWN elevation is | 4350 feet at 10°07'N, 13°16'E |



NOTES

No obstructions 200 feet or more above ground level are known to exist within this area.

On this graphic a lane is generally considered as being 8 feet (2.44 meters) in width.

Names for symbolized populated places are omitted where information is not available or where density of detail does not permit their inclusion. The reliability of vegetation information is undetermined.

This GRAPHIC IS NOT AN AUTHORITY ON INTERNATIONAL BOUNDARIES.