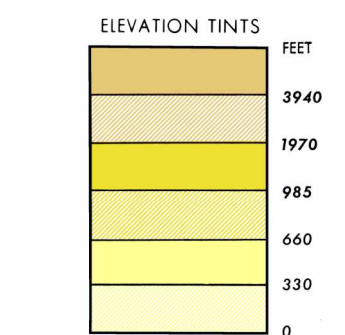


SERIES 1501 AIR SHEET NC 284 EDITION 1

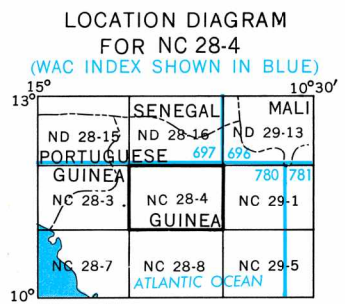


RELIABILITY OF THIS MAP

Area A	Area B
Accuracy, as related to control of map:	in excess of
Horizontal positions:	1/400 ft. 1/400 ft. 1/400 ft.
Vertical positions:	1/400 ft. 1/400 ft. 1/400 ft.
Contours:	1/400 ft. 1/400 ft. 1/400 ft.
Date of map information:	1951-53 1951-55
Vegetation:	1951-53 1951-55
All other features:	1951-53 1951-55

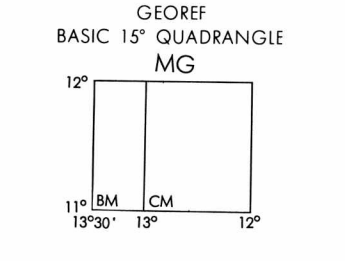
ACCURACY, AS RELATED TO CONTROL OF MAP

Area A	Area B
Accuracy, as related to control of map:	in excess of
Horizontal positions:	1/400 ft. 1/400 ft. 1/400 ft.
Vertical positions:	1/400 ft. 1/400 ft. 1/400 ft.
Contours:	1/400 ft. 1/400 ft. 1/400 ft.
Date of map information:	1951-53 1951-55
Vegetation:	1951-53 1951-55
All other features:	1951-53 1951-55



GLOSSARY

Bowl.....rocky, plateau
 Bowl.....mountain, hill
 Dimple.....mountain or hill
 Fello.....hill, mountain
 Forêt Classée.....forest reserve
 Région.....primary administrative division
 Réserve Forestière.....forest reserve
 Tonal.....stream



CAUTION

AIR INFORMATION CURRENT THROUGH 19 DECEMBER 1967

Consult Notices to Airmen (NOTAMS) and Flight Information Publications (FIPs) for the latest air information; the Chart Updating Manual (CHUM) for other chart revision information.

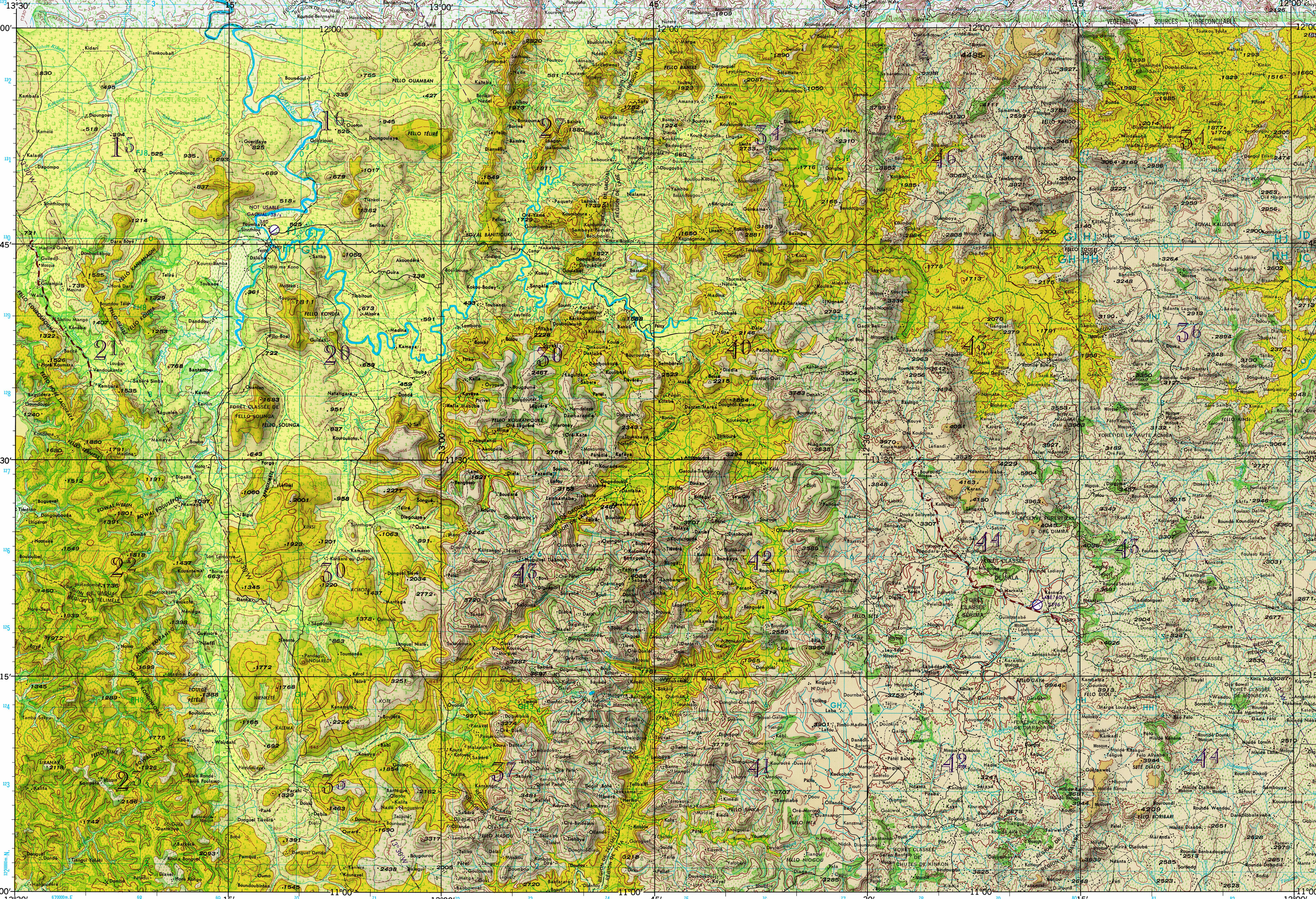
LINE OF EQUAL MAGNETIC VARIATION FOR 1965

(Annual rate of change 7' decrease)

SCALE 1:250,000

LABÉ, GUINEA

SERIES 1501 AIR SHEET NC 284 EDITION 1



JOINT OPERATIONS GRAPHIC (AIR)

Scale 1:250,000

Prepared under the direction of the Defense Intelligence Agency and published by Army Map Service, Corps of Engineers, U. S. Army, Washington, D. C. Compiled in 1967 from best available source materials.

ROADS

- All weather, hard surface
- Two or more lanes wide
- All weather, loose or light surface
- Two or more lanes wide
- One lane wide
- All weather, loose or light surface
- One lane wide
- Fair or dry weather, loose surface, dirt road
- Cut track
- Footpath, trail

RAILROADS

- Normal gauge
- Narrow gauge
- Station

BOUNDARIES

- International
- Primary administrative
- Reservation

VEGETATION

- Woods/bushwood
- Spartan forest
- Ochard, plantation, vineyard
- Rice paddy

AERODROMES (Military or Civil)

- Field limits with runway pattern
- EDNA-Name
- 50'-Length of longest runway to nearest hundreds of feet
- 50'-Soil or unimproved surface
- 72'-Elevation
- Field limits, with runway pattern unknown
- Field limits unknown, with runway pattern
- Field limits and runway pattern unknown
- SEAPLANE BASE
- SEAPLANE (EMERGENCY)
- HELIPORT

CONTROLLED AIRSPACE

- AZ1
- ATLANTIC ADIZ
- Obstruction
- 1108'-Elevation of obstruction top, above sea level
- (259)'-Elevation of obstruction top, above ground level
- Group obstruction
- Radio facility obstruction
- Power transmission line
- TERRAIN ELEVATIONS
- HIGHEST KNOWN elevation: 4485 feet located at 11°57'N, 12°17'W
- Spot elevation: Normal, Critical

HIGHEST TERRAIN ELEVATIONS FOR EACH 15 MINUTE QUADRANGLE ARE REPRESENTED IN THOUSANDS AND HUNDREDS OF FEET. THEY ARE OMITTED WHERE RELEVANT INFORMATION IS INADEQUATE. A MINUS SIGN (-) FOLLOWING THE FIGURE INDICATES THAT THE FIGURE IS BASED ON AN ESTIMATED ELEVATION.

EXAMPLES: 51 81-

NOTES

- No obstructions 200 feet or more above ground level are known to exist within this area.
- THE REPRESENTATION OF INTERNATIONAL BOUNDARIES IS NOT NECESSARILY AUTHORITY.
- On this map a lane is generally considered as being 12 to 16 feet (3.4 to 4.8 meters) in width.

CONTOUR INTERVAL APPROXIMATELY 330 FEET WITH SUPPLEMENTARY CONTOURS AT 165 FOOT INTERVALS

TRANSVERSE MERCATOR PROJECTION

BLUE NUMBERED LINES INDICATE THE 10,000 METER UNIVERSAL TRANSVERSE MERCATOR GRID, ZONE 28, CLARKE 1880 SPHEROID

USERS SHOULD REFER CORRECTIONS, ADDITIONS, AND COMMENTS TO THE NSA OPERATIONAL HELP DESK: 1-800-455-0889 COMMERCIAL 314-263-4884 DSN 693-4884 OR WRITE TO: DIRECTOR, NATIONAL GEOSPATIAL-INTELLIGENCE AGENCY, ATTN: LISTS, MAIL STOP L-48, 4800 SANGAMORE ROAD, BETHESDA, MD 20818-5002

4-68 PRINTED BY ARMY MAP SERVICE, CORPS OF ENGINEERS
Reprinted by NSA 02-06