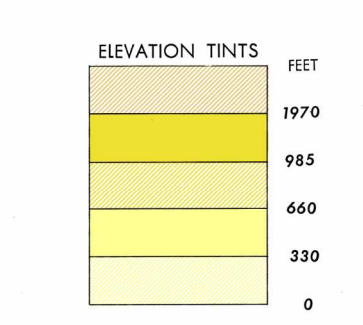
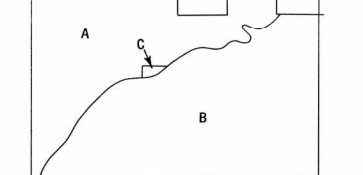


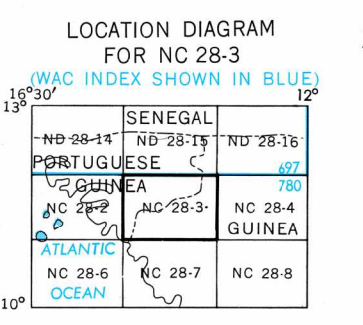
SERIES 1501 AIR SHEET NC 28-3 EDITION 1



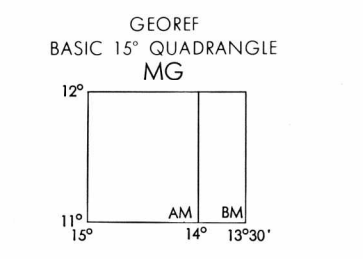
RELIABILITY OF THIS MAP



Accuracy, as related to control of map: Horizontal positions: 430 ft., 1640 ft., 3280 ft., 6560 ft., 13120 ft. Contours: 65 ft., 130 ft., 260 ft., 520 ft., 1040 ft.

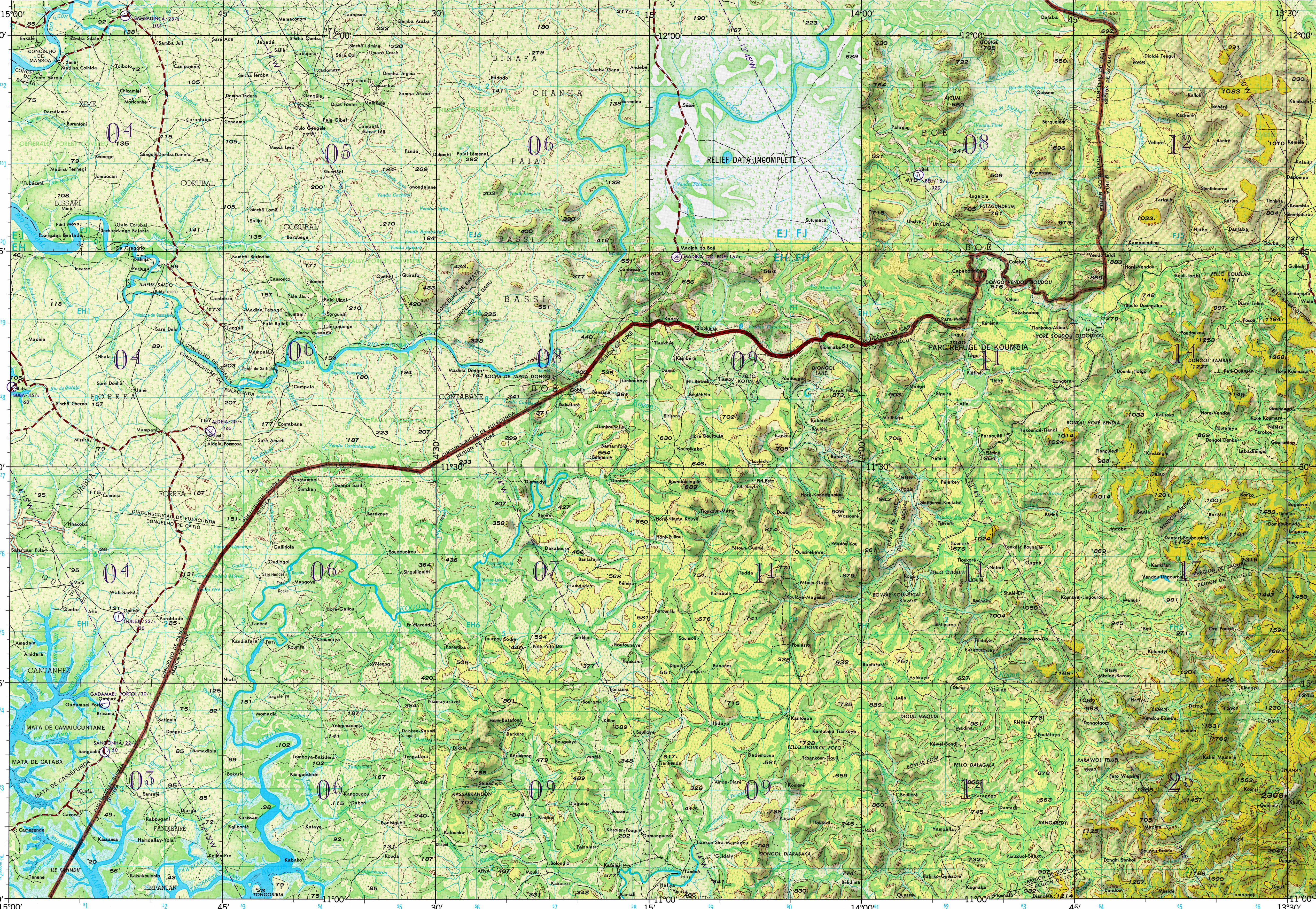


GLOSSARY
Bowal... mountain, hill
Circunscriçao... primary administrative division
Dongol... hill, mountain
Fello... hill
Ilhé... island
Ilhé(s)... islet(s)
Mata... woods
Parc Refuge... preserved park
Ponte... bridge
Rapidos... rapids
Région... primary administrative division
Rio... river
Sarré... village
Vendou... wet depression
Vendu... marshy area

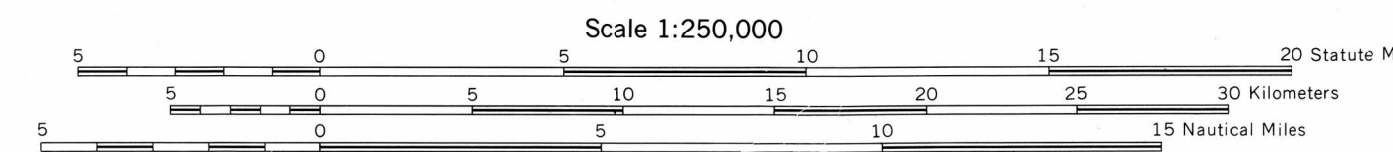


CAUTION - AIR INFORMATION CURRENT THROUGH 29 MARCH 1968
Consult Notices to Airmen (NOTAMs) and Flight Information Publications (FIPs) for the latest air information; the Chart Updating Manual (CUM) for other chart revision information.

Scale 1:250,000
Koumbia, Guinea
Series 1501 Air Sheet NC 28-3 Edition 1



JOINT OPERATIONS GRAPHIC (AIR)



Scale 1:250,000
0 5 10 15 20 Statute Miles
0 5 10 15 20 25 30 Kilometers
0 5 10 15 Nautical Miles

CONTOUR INTERVAL APPROXIMATELY 330 FEET WITH SUPPLEMENTARY CONTOURS AT 165 FOOT INTERVALS

TRANSVERSE MERCATOR PROJECTION
USERS SHOULD REFER CORRECTIONS, ADDITIONS, AND COMMENTS TO THE NGA OPERATIONAL HELP DESK: 1-800-455-0899; COMMERCIAL 314-263-4884; DSN 683-4884; OR WRITE TO: DIRECTOR, NATIONAL GEOSPATIAL-INTELLIGENCE AGENCY, ATTN: LES, MAIL STOP L-88, 4600 SANGAMORE ROAD, BETHESDA, MD 20816-5003.
BLUE NUMBERED LINES INDICATE THE 10,000 METER UNIVERSAL TRANSVERSE MERCATOR GRID, ZONE 29E, CLARK 1880 SPHEROID

<p>AERODROMES (Military or Civil)</p> <p>Field limits with runway pattern: EDNA/50's 725</p> <p>EDNA-Name: 50-Length of longer runway to nearest hundreds of feet 1-Soft or unimproved surface 725-Elevation</p> <p>Field limits, with runway pattern unknown</p> <p>Field limits unknown, with runway pattern</p> <p>Field limits and runway pattern unknown</p> <p>SEAPLANE BASE</p> <p>SEAPLANE (EMERGENCY)</p> <p>HELIPORT</p>	<p>CONTROLLED AIRSPACE</p> <p>ADIZ</p> <p>VISUAL AIDS AND OBSTRUCTIONS</p> <p>Obstruction: 1108-Elevation of obstruction (ft. above sea level) (259)-Elevation of obstruction top, above ground level</p> <p>Group obstruction</p> <p>Radio facility obstruction</p> <p>Power transmission line</p> <p>TERRAIN ELEVATIONS</p> <p>HIGHEST KNOWN elevation is 2369 feet at 11°07'N, 13°30'W. Spot elevation: Normal; Critical: 792 1640</p>	<p>ATLANTIC ADIZ</p> <p>HIGHEST TERRAIN elevations for each 15 MINUTE QUADRANGLE are represented in THOUSANDS and HUNDREDS of feet. They are omitted where relief information is inadequate. A minus sign (-) following the figure indicates that the figure is based on an estimated elevation.</p> <p>EXAMPLES: 51 81-</p> <p>NOTES No obstructions 200 feet or more above ground level are known to exist within this area. THE REPRESENTATION OF INTERNATIONAL BOUNDARIES IS NOT NECESSARILY AUTHORITY.</p>
---	--	--

Prepared under the direction of the Defense Intelligence Agency and published by Army Map Service, Corps of Engineers, U. S. Army, Washington, D. C. Compiled in 1966 from the best available source materials.

ROADS

All weather, hard surface: 2 or more lanes wide
All weather, loose or light surface: Two or more lanes wide
All weather, hard surface: One lane wide
All weather, loose or light surface: One lane wide
Fair or dry weather, loose surface, dirt road
Cart track
Footpath, trail

RAILROADS

Normal gauge: Single track, Multiple track
Narrow gauge: Station

BOUNDARIES

International
Primary administrative
Reservation

VEGETATION

Woods-brushwood
Scattered trees
Orchard, plantation, vineyard
Rice paddy

GRID ZONE DESIGNATION: 29E
10,000 M. SQUARE IDENTIFICATION: EJ FH 130

TO GIVE A STANDARD REFERENCE ON THIS SHEET TO NEAREST 1000 METERS:

SAMPLE POINT: MAMPATTA

1. Read letters identifying 100,000 meter square in which the point lies.
2. Locate four vertical grid lines to LEFT of point and read E and F digits labeling the line which is the top or bottom corner of the 1000 meter square.
3. Locate first HORIZONTAL grid line BELOW point and read G and H digits labeling the line which is the left or right margin, or on the line itself.
4. Estimate meters from grid line to point, or on the line itself.

SAMPLE REFERENCE: 29E 29E 130 130 0000
If reporting beyond 9° S or 18° E W, prefix Grid Zone Designation, etc.

